

## Hisense 100QD7QF

# Hisense 100QD7QF 100-Inch QD7 Series Mini-LED 4K UHD Smart Fire TV User Manual

Model: 100QD7QF

[Introduction](#)

[Setup](#)

[Operating](#)

[Maintenance](#)

[Troubleshooting](#)

[Specifications](#)

[Warranty &](#)

[Support](#)

## 1. INTRODUCTION

---

This manual provides essential information for the setup, operation, maintenance, and troubleshooting of your Hisense 100-Inch Class QD7 Series Mini-LED 4K UHD Smart Fire TV (Model: 100QD7QF). Please read this manual thoroughly before using your television to ensure proper functionality and safety.

The Hisense QD7 Series offers advanced display technologies including Mini-LED for enhanced contrast and QLED Color for a wide spectrum of vibrant hues. It features a native 144Hz panel, Dolby Vision HDR, Dolby Atmos audio, and integrates the Fire TV platform for a comprehensive smart television experience. Gaming is optimized with Game Mode Pro, ALLM, and AMD FreeSync Premium.



Figure 1: Hisense 100-Inch QD7 Series Mini-LED 4K UHD Smart Fire TV. This image displays the front view of the television, highlighting its large screen size and sleek design.

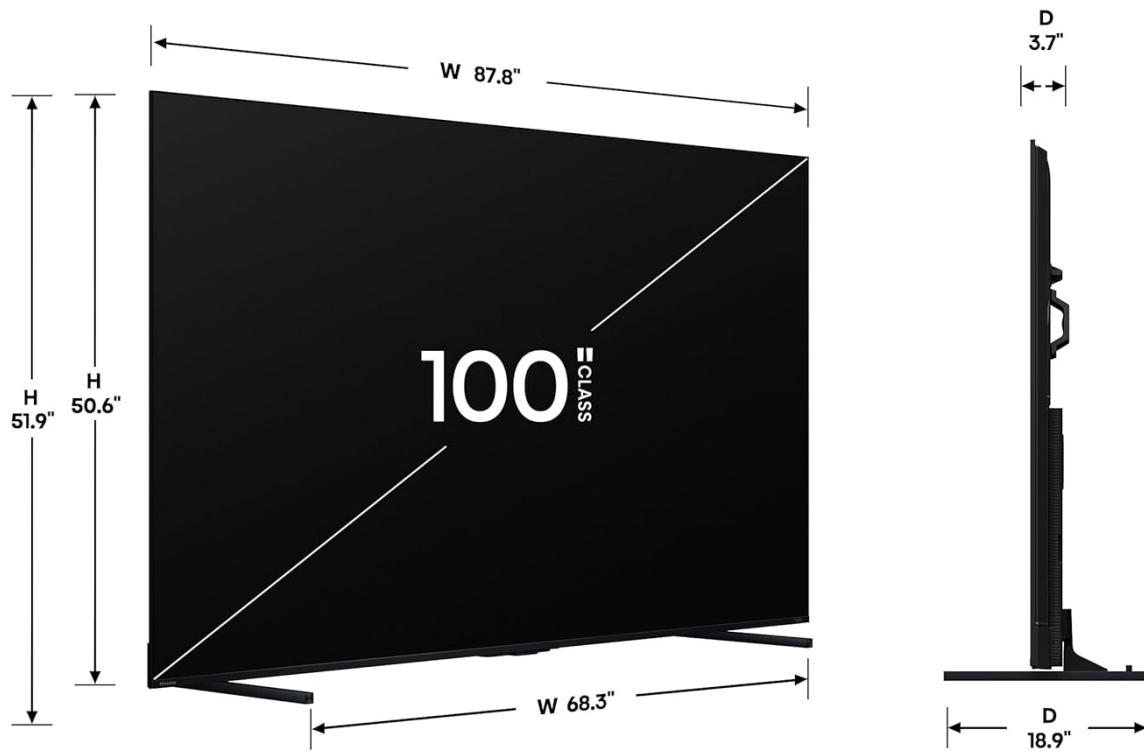
## 2. SETUP

---

### 2.1 Unpacking and Initial Inspection

Carefully remove the television from its packaging. Due to its size and weight (approximately 164.7 pounds), it is recommended that at least two or more people assist with unpacking and handling to prevent injury or damage to the unit. Inspect the TV for any signs of damage before proceeding with installation.

# MiniLED QD7



## VESA Wall Mount Size:

800x400 mm (M8)



## Product Weight

With stand: 125.7 lbs

Without stand: 120.2 lbs



Figure 2: Television dimensions and weight specifications. This diagram illustrates the physical dimensions of the 100-inch TV, including height, width, and depth, both with and without the stand, along with VESA wall mount size and product weight.

## 2.2 Stand Installation (Optional)

If you plan to place the TV on a surface, attach the included stands. Ensure the stands are securely fastened according to the quick start guide (QSG) provided in the box. Place the TV on a stable, level surface that can support its weight.

## 2.3 Wall Mounting (Optional)

For wall mounting, use a VESA-compatible mount (800x400 mm, M8 screws). Refer to the wall mount manufacturer's instructions for proper installation. The TV features handles on the back to assist with lifting during wall mounting. Always ensure the wall mount is rated for the TV's weight and installed by qualified personnel.

## 2.4 Connecting Peripherals

Connect your external devices to the appropriate ports on the back of the television. The Hisense 100QD7QF includes multiple connectivity options:

- **HDMI Ports:** Two HDMI ports support 4K@60Hz, and two HDMI ports support 4K@144Hz for high-refresh-

rate devices like gaming consoles or PCs.

- **USB Ports:** Two USB ports for connecting flash drives or other USB devices.
- **Ethernet Port:** For a wired internet connection.
- **Digital Audio Out:** For connecting to external sound systems.
- **ANT/Cable Input:** For connecting an antenna or cable TV.
- **AV Input:** For older devices using composite video.
- **Headphone Jack:** For private listening.

# AI Picture with AI 4K Upscaler

## Remaster every pixel



Figure 3: Rear panel connectivity ports. This image details the various input and output ports available on the back of the television, including USB, HDMI, Digital Audio Out, Ethernet, ANT/Cable, AV Input, and Headphone.

### 2.5 Initial Power On and Fire TV Setup

After connecting all necessary cables, plug the power cable into an electrical outlet. Press the power button on the remote control or the TV. Follow the on-screen instructions to complete the initial Fire TV setup, including connecting to your Wi-Fi network and logging into your Amazon account.

## 3. OPERATING YOUR HISENSE TV

### 3.1 Remote Control Functions

The included voice remote allows for intuitive control of your Fire TV. Use the navigation pad to browse menus and select items. The microphone button activates Alexa voice commands for searching content, controlling smart home devices, and more.

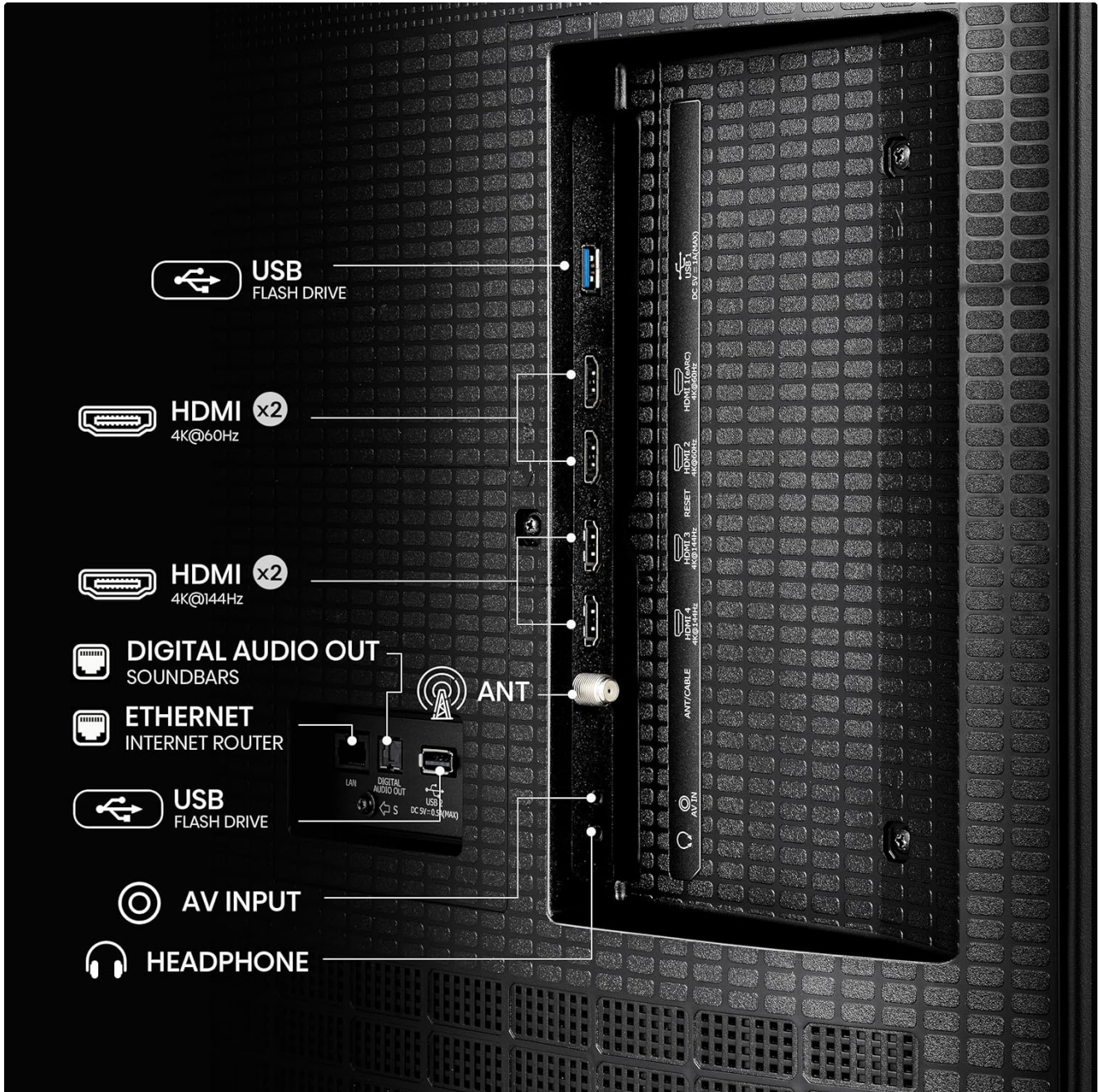


Figure 4: Fire TV Voice Remote. This image shows the remote control with its dedicated Alexa voice button, power button, navigation pad, and playback controls.

### 3.2 Fire TV Interface Navigation

The Fire TV home screen provides quick access to your favorite streaming apps, live TV, and personalized recommendations. Navigate through the interface using the remote control. You can customize your profile for tailored content suggestions.

Press & ask | alexa

## Shorter than a shortcut.



Figure 5: Fire TV User Interface. This image displays the Fire TV home screen with various streaming applications and content recommendations.

### 3.3 Picture Settings

Your Hisense TV features advanced picture technologies:

- **Mini-LED with Full Array Local Dimming:** Provides precise contrast by controlling thousands of tiny LEDs. Adjust local dimming settings in the picture menu for optimal black levels and brightness.
- **QLED Color:** Delivers over a billion shades of color for vibrant and realistic images. Picture modes can be selected to suit different content types (e.g., Standard, Movie, Sport).
- **Dolby Vision HDR:** Automatically enhances contrast, brightness, and color for compatible content. Ensure your source device is also configured for Dolby Vision.
- **AI 4K Upscaler:** Enhances lower-resolution content to near 4K quality. This feature operates automatically to improve visual clarity.
- **Filmmaker Mode:** Preserves the original aspect ratio, colors, and frame rates of movies, providing an authentic cinematic experience.

# Mini-LED with Full Array Local Dimming

Superb contrast. Striking clarity.



Mini-LED

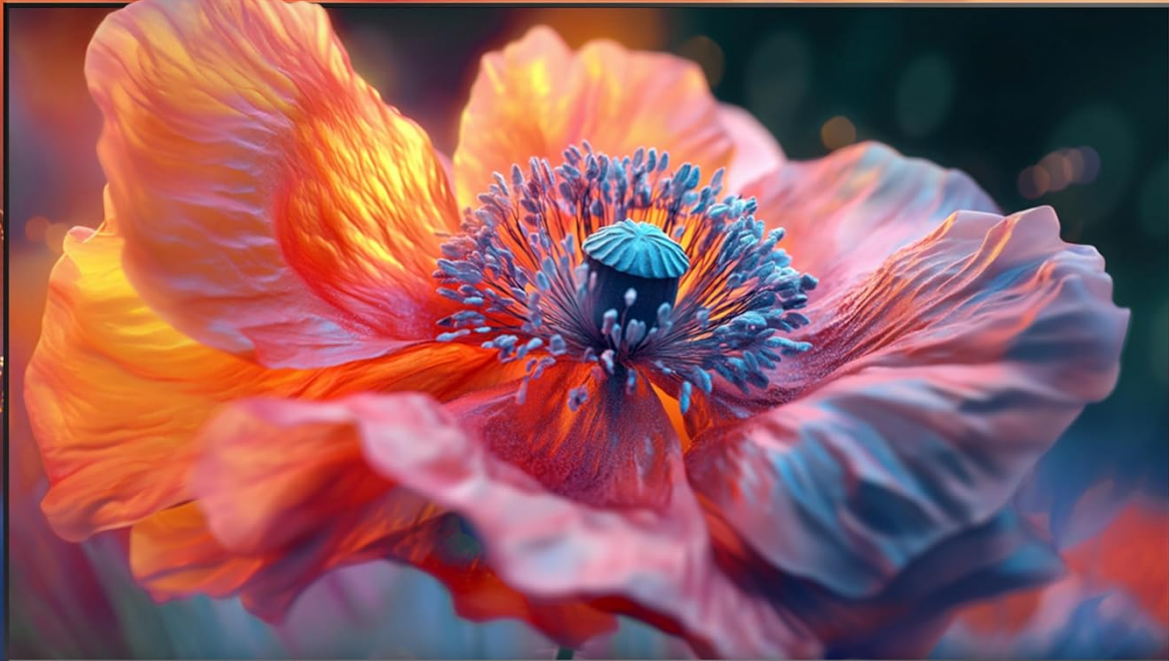


Full Array  
Local Dimming

Figure 6: Mini-LED with Full Array Local Dimming. This graphic compares a conventional TV backlight with Mini-LED technology, showing how smaller LEDs and local dimming zones create superior contrast and clarity.

# QLED Color

Billion+ shades of vivid color



**QLED**

*Figure 7: QLED Color. This image showcases the vibrant and rich color reproduction capabilities of QLED technology, displaying a detailed flower.*



Figure 8: AI 4K Upscaler. This graphic illustrates how the AI 4K Upscaler transforms 2K signal content into enhanced 4K effect, showing improved detail and clarity.

### 3.4 Sound Settings

The TV supports Dolby Atmos for immersive audio. It also features a built-in subwoofer for enhanced bass. Adjust sound modes (e.g., Standard, Theater, Music) and equalizer settings in the audio menu to suit your preferences. For external audio systems, connect via the Digital Audio Out port.

# 144Hz Game Mode Pro

Maintain your competitive edge

**AMD**  
FreeSync  
Premium



Figure 9: Dolby Vision Atmos. This image depicts a living room setting with a TV displaying a waterfall scene, emphasizing the immersive audio and visual experience provided by Dolby Vision and Dolby Atmos.

## 3.5 Gaming Features

For an optimized gaming experience:

- **144Hz Game Mode Pro:** Activates a variable refresh rate (VRR) from 48Hz to 144Hz, along with Auto Low Latency Mode (ALLM), to minimize input lag and screen tearing.
- **AMD FreeSync Premium:** Ensures smooth, tear-free gameplay with compatible AMD graphics cards.
- **AI Smooth Motion:** Reduces motion blur during fast-paced scenes, ideal for sports and action games.

# Native 144Hz with AI Smooth Motion

## Keeps your eye on the ball



Figure 10: 144Hz Game Mode Pro. This graphic highlights the 144Hz refresh rate, VRR, ALLM, and Motion Rate 480 features, illustrated with a dynamic racing car image.

### 3.6 Smart Features and Connectivity

Your TV integrates with the Fire TV ecosystem and offers various smart functionalities:

- **Alexa Built-in:** Use voice commands for content search, smart home control, setting timers, and more.
- **Live TV Integration:** Access live channels from various apps directly from the Fire TV home screen.
- **Bluetooth:** Connect wireless headphones, soundbars, or other Bluetooth devices.
- **Wi-Fi:** Connect to your home wireless network for internet access and streaming.
- **Apple AirPlay & Home:** Stream content from Apple devices and integrate with Apple Home for smart control.

## 4. MAINTENANCE

---

## 4.1 Cleaning the Screen

To clean the screen, first power off the TV and unplug it from the power outlet. Use a soft, lint-free cloth, slightly dampened with water or a screen-cleaning solution specifically designed for electronics. Do not spray liquid directly onto the screen. Gently wipe the screen to remove dust and smudges.

## 4.2 Cleaning the TV Body

For the TV body and frame, use a soft, dry cloth. Avoid using abrasive cleaners, waxes, or solvents as they can damage the finish. Ensure no liquids enter the ventilation openings.

## 4.3 Software Updates

Your Fire TV will periodically check for and install software updates automatically when connected to the internet. It is recommended to allow these updates to ensure optimal performance, security, and access to new features. You can manually check for updates in the Fire TV settings menu.

# 5. TROUBLESHOOTING

---

Before contacting customer support, please refer to the following common issues and solutions:

| Problem  | Possible Solution   |
|--|---|
| No Power   | Ensure the power cable is securely plugged into both the TV and a working electrical outlet. Check if the outlet has power. Try a different outlet.   |
| No Picture / Black Screen                          | Verify the correct input source is selected. Check all HDMI or other video cables for secure connections. Try restarting the TV by unplugging it for 60 seconds and plugging it back in.    |
| No Sound   | Check the volume level and ensure the TV is not muted. Verify external audio systems are powered on and correctly connected. Check audio output settings in the TV menu.                    |
| Remote Control Not Working                         | Replace the batteries in the remote. Ensure there are no obstructions between the remote and the TV's IR sensor. Re-pair the remote if it's a Bluetooth remote (refer to Fire TV settings). |
| Network Connectivity Issues                        | Check your Wi-Fi router and modem. Restart network equipment. Re-enter Wi-Fi password in TV settings. For wired connections, ensure the Ethernet cable is properly connected.               |
| Picture Flickering / Stuttering / Color Distortion | This could indicate a hardware issue. Ensure all cables are secure. Try a factory reset (note: this will erase all settings). If the problem persists, contact Hisense customer support.    |

For more detailed troubleshooting or issues not listed here, please visit the official Hisense support website or contact their customer service.

## 6. SPECIFICATIONS

---

| Feature                        | Detail   |
|--------------------------------|--|
| Brand                          | Hisense  |
| Model Number                   | 100QD7QF   |
| Screen Size                    | 100 Inches   |
| Display Technology             | Mini-LED, QLED   |
| Resolution                     | 4K UHD (3840 x 2160)   |
| Refresh Rate                   | Native 144Hz   |
| Special Features               | Dolby Vision Atmos, FreeSync Premium, Local Dimming, Mini-LED, Native 144Hz, Fire TV, Alexa Built-in |
| Connectivity                   | Bluetooth, Ethernet, HDMI (x4, 2x 4K@144Hz, 2x 4K@60Hz), USB (x2), Wi-Fi                             |
| Product Dimensions (W x H x D) | 87.8" x 50.6" x 3.7" (without stand)   |
| Item Weight                    | 164.7 pounds   |
| Power Consumption (On-mode)    | 450 watts  |
| Included Components            | TV, Power Cable, Remote, Stand, QSG  |

## 7. WARRANTY AND SUPPORT

---

### 7.1 Product Warranty

Your Hisense television is covered by a limited warranty. Please refer to the warranty card included in your product packaging for specific terms, conditions, and duration of coverage. Keep your proof of purchase for warranty claims.

### 7.2 Customer Support

For technical assistance, service inquiries, or to report issues, please contact Hisense customer support. You can find contact information and additional resources on the official Hisense website: [www.hisense-usa.com/support](http://www.hisense-usa.com/support). When contacting support, please have your TV model number (100QD7QF) and serial number ready. The serial number is typically located on a sticker on the back of the TV.

