

MYXINFU BODYVCYRS6

MYXINFU Ear Wax Removal Kit with 1080P Camera - Instruction Manual

Model: BODYVCYRS6

1. INTRODUCTION

Thank you for choosing the MYXINFU Ear Wax Removal Kit. This manual provides detailed instructions for the safe and effective use of your new ear cleaning tool, which features a 1080P HD camera and LED illumination for clear visualization of the ear canal. Please read this manual thoroughly before first use and retain it for future reference.

2. IMPORTANT SAFETY INFORMATION

- **Consult a Professional:** If you experience ear pain, discharge, or hearing loss, consult a medical professional before using this device.
- **Gentle Use:** When using the otoscope for the first time, familiarize yourself with its feel in the ear canal. Move it gently and slowly to avoid injury.
- **Children:** This device is not intended for use by children without adult supervision. Keep out of reach of infants and young children.
- **Avoid Over-Insertion:** Do not insert the ear pick too deeply into the ear canal. Excessive force or depth can cause damage to the eardrum or inner ear structures.
- **Clean Before Use:** Always ensure the ear pick and camera lens are clean before each use to prevent infection.
- **Discontinue Use If Pain Occurs:** If you feel any discomfort or pain during use, immediately stop and consult a medical professional.
- **Charging:** Use only the provided Type-C charging cable. Do not use damaged cables or chargers.
- **Temperature:** The device is designed with intelligent constant temperature control for the lens (approx. 25°C) and handles (approx. 32°C) to ensure comfort.

Legal Disclaimer: Statements regarding dietary supplements have not been evaluated by the FDA and are not intended to diagnose, treat, cure, or prevent any disease or health condition. This product is for personal hygiene and informational purposes only and should not replace professional medical advice.

3. PACKAGE CONTENTS

Please check the package for the following items:

- 1 x Ear Wax Removal Tool Camera
- 6 x Silicone Ear Scoop Covers
- 10 x Earwax Removal Kits (various metal ear picks)
- 1 x Type-C Charging Cable
- 1 x Storage Bottle for ear picks
- 1 x User Manual



Image 1: All components included in the MYXINFU Ear Wax Removal Kit.

PACKING LIST

- 1 Ear wax removal tool*1
- 2 Silicone ear pick covers*6
- 3 Ear pick cover storage bucket*1
- 4 Metal ear wax removal tool *10+ storage tube*1
- 5 Charging cable*1
- 6 Instruction manual*1



Wireless Visual Ear pick User Manual

Essential Information
This manual provides an introduction to the product's features, characteristics, and step-by-step usage instructions. The method to eliminate the possibility of accidental use caused by improper operation and provide usage precautions. Please read the user manual carefully for optimal use results.

Product specifications

Product Name	Wireless Visual Ear pick
Host weight	46g
Network standards	IEEE 802.11n (a/n)
Antenna	Built-in IPX antenna
Work frequency	2.4GHz
Image transmission rate	30fps
Battery	130mAh
Work duration	40minutes - 45minutes
Charging time	45 minutes
Input	5V-0.2A
Best focus distance	1.5 - 2cm
Pixel	1920by 1080 pixels
Gyroscope	6-axis

Usage Steps

1. Search and download the application AIR-LOOK in the Apple or Android app store or scan the QR code to download the APP directly as shown in Figure. Please choose the corresponding APP to install based on the mobile operating system you are using.
Additionally, Apple system Ear pick scoop operation video.
Android system Ear pick scoop operation video.

Warm reminder

1. Should you experience problems such as no image, a lack of image display, a frozen screen, or screen artifacts, please first ensure that the phone is connected to the device via Wi-Fi. Furthermore, consider restarting either the device or the mobile application.
2. During use, if the device cannot be turned on or the body LED light is flashing, please charge the product promptly to ensure the battery has power.
3. Should you encounter a message indicating an inability to establish a connection, it could be due to the Visual Ear pick being linked to a previous device. To resolve this, kindly power off the unit, reboot it, and subsequently attempt to reconnect the ear pick.
4. Upon powering on the device, the indicator light will begin to blink. It will remain lit once a Wi-Fi signal has been successfully connected. Rapid flashing of the indicator light signifies a low battery status. While the device is charging, the light will remain illuminated, and it will extinguish once the battery is fully charged.
5. Considering the ear canal's curvature, it is crucial to delicately adjust the ear spectrum's position throughout its application to obtain a clear view of the eardrum.
6. The product's primary focus is set. The object appears sharpest at a distance ranging from 1.5 to 2 centimeters away from the lens. When in use, ensure to first tune the separation between the ear mirror and the ear to achieve precise focus and a clear image.

Precautions

1. Prior to operation, it is essential to survey your immediate environment. Please refrain from using the product in areas where individuals are actively moving to prevent potential collisions and injuries.
2. Children should not use this product alone to avoid accidental injury.
3. Do not submerge the main unit in liquids to avoid damage from water ingress.
4. The product contains an internal rechargeable lithium battery. If not used frequently, please charge it once a month.
5. During use, the product temperature will slightly rise (not exceeding 45°C), please use with confidence.
6. Do not charge the product with a charger or power bank with a voltage higher than 5V.

Image 2: Visual representation of the package contents and their quantities.

4. PRODUCT OVERVIEW

The MYXINFU Ear Wax Removal Kit combines a high-definition camera with an ear cleaning tool, allowing for a clear view of the ear canal during the cleaning process. Key features include:

- **1080P HD Camera:** Provides a clear, real-time view of the ear canal on your smartphone or tablet.
- **6 Bright LED Lights:** Illuminates the ear canal for enhanced visibility in dark environments.
- **Wi-Fi Connectivity:** Connects wirelessly to your iOS or Android device via a dedicated app.
- **Integrated Earspoon Design:** Features a durable stainless steel rod and soft, replaceable silicone ear scoop covers for safe and comfortable use.
- **Non-slip Textured Handle:** Ensures a secure grip during operation.
- **Type-C Charging:** Convenient and modern charging interface.
- **Waterproof Lens:** Allows for easy cleaning of the camera lens after use.

Intelligent Visual Ear Wax Removal Tool with Camera and Light

-  3.5mm Lens Diameter
-  1080P HD Resolution
-  Wi-Fi Connection
-  Universal Gyroscope
-  Intelligent Constant Temperature
-  APP Visual

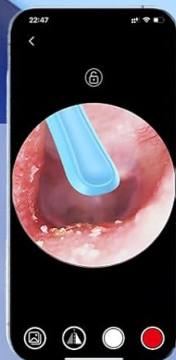


Image 3: Intelligent Visual Ear Wax Removal Tool overview with key features.

1080P HD HIGH-DEFINITION

True restoration of the ear's internal conditions, clear rendering of images and video moments

✓ Our 1080P



✗ Other 720P



Image 4: The 1080P HD camera provides a clear view of the ear canal.

6 COLD LIGHT LEDS

Earwax is crystal clear



6 LED shadowless lights

Small lens, free in and out

Type-C charging

Non-slip textured

The image features several callout boxes with rounded corners. The top-left callout shows a close-up of the camera lens surrounded by six yellow LED lights. The middle-left callout shows the device's tip with a small lens and a blue light. The middle-right callout shows the device's tip with a blue light. The bottom-left callout shows a white Type-C charging cable plugged into the device's port. The bottom-right callout shows a close-up of the black textured handle with a blue button.

Image 5: Key features including LED lights, charging port, and handle design.

**1080p HD image
real-time transmission,
cleaner than blind**



✓ Our



Six cold light LEDS
High brightness makes
it clearer

✗ Other



Ordinary diode bulbs
Low brightness makes it
unclear

Image 6: Illustrates the clarity of 1080P HD imaging and the effectiveness of 6 cold LED lights.



Image 7: Intelligent constant temperature control for user comfort.

5. SETUP GUIDE

Follow these steps to set up your MYXINFU Ear Wax Removal Kit:

1. **Step 1: Download the App**

Search for and download the "AIR-Look" APP from the Apple App Store (for iOS devices) or Google Play Store (for Android devices). Alternatively, scan the QR code provided in the manual or on the product packaging.

HOW TO CONNECT?

Step 1

Search and download the "AIR-Look" APP in the apple app store or google play

Step 2

Press and hold the power button for 2 seconds to open the ear wax removal tool

Step 3

Find and connect "AIR-ES-XXXXXX" in wifi setting

Step 4

Return to the APP then click START

Image 8: Visual guide for connecting the device.

For direct download, you can also visit: <https://qr15.cn/D83xfi>

2. Step 2: Power On the Device

Press and hold the power button on the ear wax removal tool for 2 seconds to turn it on. The LED lights on the device will illuminate.

3. Step 3: Connect via Wi-Fi

Go to your phone's Wi-Fi settings. Find and connect to the Wi-Fi network named "AIR-ES-XXXXXX" (where XXXXXX is a unique identifier for your device). No password is required.

4. Step 4: Start the App

Return to the "AIR-Look" APP. The device should automatically connect. Click the "START" button within the app to begin viewing the live feed from the camera.



Work with ios system and android system

Connect via Wi-Fi and use the Smart Visualization APP
Can take photos and record videos

Image 9: The device works with both iOS and Android systems.

6. OPERATING INSTRUCTIONS

Once connected, you can begin using the ear wax removal tool:

1. **Attach a Silicone Ear Scoop:** Select a suitable silicone ear scoop cover and securely attach it to the tip of the ear wax removal tool. Ensure it is firmly in place.
2. **Position the Device:** Gently and slowly insert the tip of the device into your ear canal while observing the live feed on your smartphone or tablet.
3. **Adjust View:** The 6 LED lights will illuminate the ear canal, providing a clear view. Adjust the angle and depth of insertion carefully to get the best view of the earwax.
4. **Remove Earwax:** Using the silicone scoop, gently scrape or scoop out visible earwax. Always move slowly and avoid touching the eardrum. If you encounter hard or impacted wax, do not force it; consult a medical professional.
5. **Capture Images/Videos:** The "AIR-Look" app allows you to take photos and record videos of your ear canal. This can be useful for monitoring ear health or sharing with a doctor.
6. **Other Tools:** For larger or more stubborn wax, you may use the additional metal ear picks provided. Exercise extreme caution and always use them under direct visual guidance from the camera.

Important: Always prioritize safety. If you are unsure or uncomfortable, seek professional medical advice.

SOFT SILICONE EARPLUGSGENTLE ON THE EARS

Replaceable and comfortable,
designed for ear health

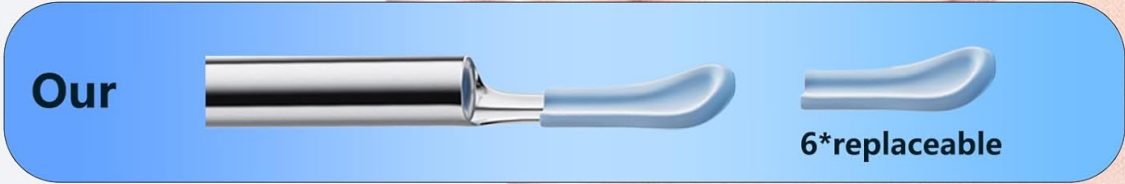
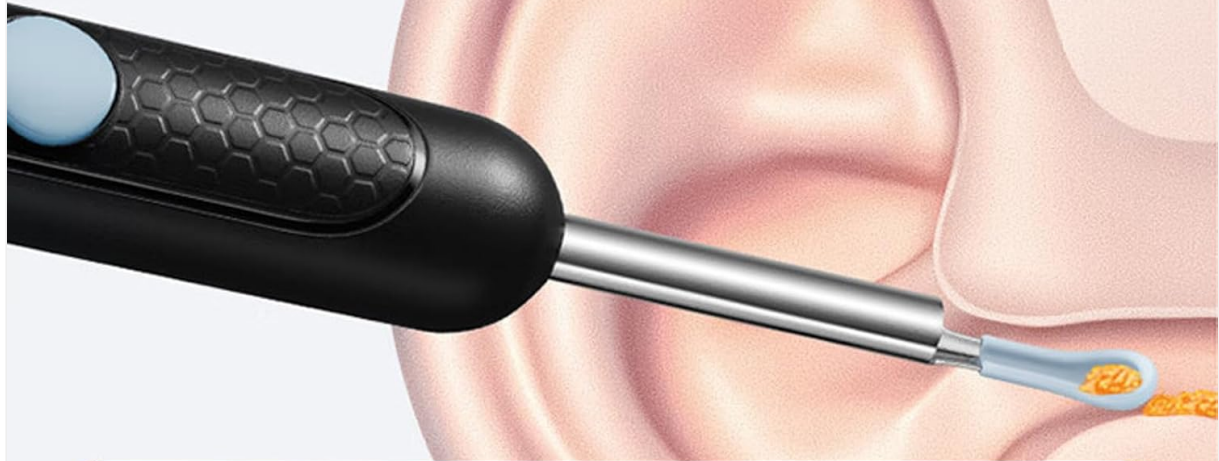


Image 10: Soft silicone ear scoops ensure gentle and comfortable use.



Image 11: Illustrates the risks associated with improper ear cleaning methods.

7. MAINTENANCE AND CLEANING

Proper maintenance ensures the longevity and hygiene of your device:

- **Cleaning the Lens:** After each use, the camera lens is waterproof and can be rinsed with water or wiped with an alcohol swab. Ensure it is completely dry before storing.
- **Cleaning Ear Scoops/Picks:** Remove the silicone ear scoop covers and wash them with soap and water, or wipe with an alcohol swab. The metal ear picks should also be cleaned thoroughly after each use.
- **Storage:** Store all components in a clean, dry place, preferably in the provided storage bottle and packaging, away from direct sunlight and extreme temperatures.
- **Charging:** Recharge the device when the battery is low. A full charge typically takes about 1 hour and provides approximately 90 minutes of continuous use.



Image 12: The waterproof lens allows for easy cleaning under running water.

8. TROUBLESHOOTING

Problem	Possible Cause	Solution
Device does not turn on.	Low battery.	Charge the device using the provided Type-C cable.
Cannot connect to Wi-Fi.	Device not powered on or Wi-Fi not enabled. Incorrect Wi-Fi network selected.	Ensure the device is powered on. Go to your phone's Wi-Fi settings and select the "AIR-ES-XXXXXX" network. Restart the device and try again.
No image in the app.	App not started or connection failed.	Ensure the device is connected via Wi-Fi and you have pressed "START" in the "AIR-Look" app. Close and reopen the app.
Image is blurry or unclear.	Camera lens is dirty.	Clean the camera lens with water or an alcohol swab.
Device gets warm during use.	Normal operation.	The device has intelligent temperature control. A slight warmth is normal. If it becomes excessively hot, discontinue use and contact support.

9. SPECIFICATIONS

Feature	Detail
Model	B0DYVCYRS6
Camera Resolution	1080P HD
LED Lights	6 Cold LED Lights
Connectivity	Wi-Fi (iOS & Android compatible)
Charging Port	Type-C
Battery Life	Approximately 90 minutes (continuous use)
Charging Time	Approximately 1 hour
Lens Diameter	3.5mm
Temperature Control	Intelligent Constant Temperature (Lens ~25°C, Handles ~32°C)
Package Dimensions	6.73 x 2.48 x 0.75 inches
Weight	2.89 ounces

10. WARRANTY AND SUPPORT

MYXINFU is committed to providing high-quality products. If you encounter any issues with your Ear Wax Removal Kit, please refer to the troubleshooting section first. For further assistance, product inquiries, or warranty claims, please contact our customer support team through the retailer where you purchased the product. Please have your purchase details and model number (B0DYVCYRS6) ready when contacting support.

We value your satisfaction and are here to help.