

## GODOX C30R

# GODOX Litemons C30R RGB LED Video Panel Light

## INSTRUCTION MANUAL

### Introduction

Thank you for purchasing the GODOX Litemons C30R RGB LED Video Panel Light. This compact and versatile lighting solution is designed for photographers, videographers, and vloggers, offering a wide range of color temperatures, full RGB control, and various special effects. Please read this manual carefully before use to ensure proper operation and optimal performance.

### What's in the Box

- Light body \*1
- Collapsible Diffusion Dome \*1
- Charging Cable \*1



Image: The GODOX Litemons C30R light body, collapsible diffusion dome, and USB-C charging cable included in the package.

### Key Features

- **Full Color RGB Video Light:** 360° Hue adjustment, 2500-9000K color temperature control, Dimmable Brightness 0 to 100%.
- **CCT/HSI/FX Lighting Modes:** The Godox C30R RGB video light offers HSI Color Mode, CCT Mode for white light adjustment, and Scenes Mode for various effects.
- **3350mAh Large Capacity Battery:** Provides 45 minutes of full-power runtime and supports charging while in use (276 minutes at 50% brightness output).
- **Small Size & Standard 1/4 Screw:** Weighing just 248g and palm-sized, it's highly portable. The 1/4" screw allows mounting on cameras, light stands, or tripods.

## Keep It Real

With high color rendering, the C30R guarantees that what you capture is exactly what you see

**CRI  $\geq$  96** | **TLCI  $\geq$  97**



Image: The GODOX Litemons C30R light, showcasing its compact size and portability when held in hand.

### Setup

1. **Powering On/Off:** Locate the power button on the device. Press and hold for 3 seconds to turn the light on or off.
2. **Mounting:** The C30R features a standard 1/4" threaded hole at the bottom. Attach it to a camera hot shoe adapter, light stand, or tripod as needed.

3. **Attaching Diffuser:** Gently stretch the collapsible diffusion dome over the front edge of the light panel for a softer light output.

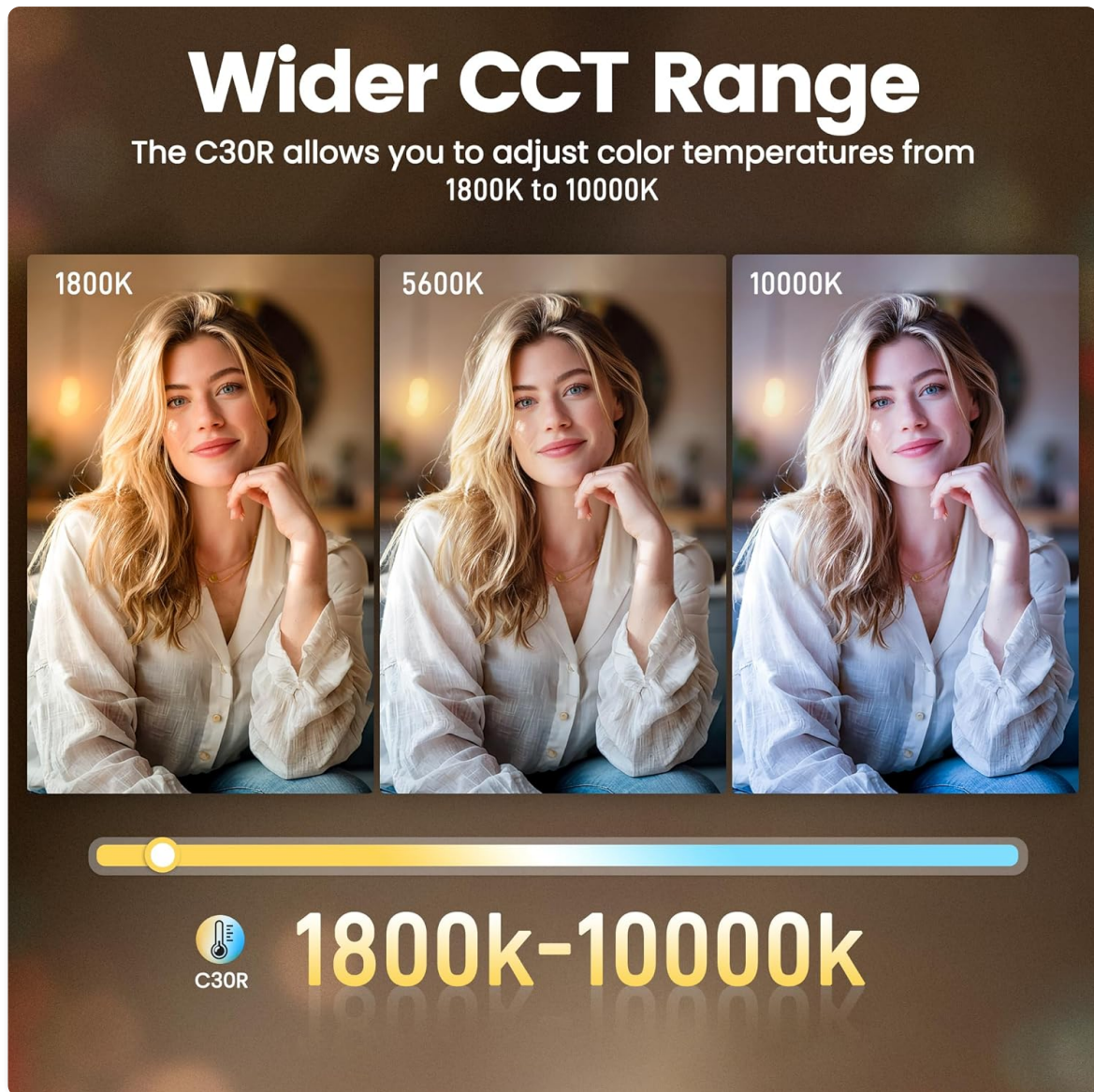


Image: The GODOX Litemons C30R light attached to a camera, demonstrating how it can be used as an on-camera light source.

## Operating Instructions

The GODOX Litemons C30R offers intuitive controls for various lighting modes.

1. **General Controls:** The device features control dials/buttons for adjusting brightness, color temperature, and cycling through modes. Refer to the on-screen display for current settings.
2. **CCT Mode:** Adjust the color temperature from 1,800K (warm) to 10,000K (cool) to match ambient light or create desired moods.
3. **HSI Mode:** Provides full control over Hue (360°), Saturation, and Intensity (brightness) for precise color selection.
4. **FX Mode (Special Effects):** Access a variety of pre-programmed lighting effects to enhance your creative projects.

5. **Brightness Adjustment:** The brightness can be dimmed from 0% to 100% in any mode.

## Charge & Use Simultaneously

The built-in battery provides maximum output for 45 minutes and features Type-C fast charging, allowing for real-time charging while in use.



Image: The GODOX Litemons C30R's display screen, showing options for adjusting hue, saturation, and intensity (HSI mode).

# Stay Cool and Quiet

The aerospace-grade packaging technology ensures efficient heat dissipation and a long lifespan.



Image: Demonstrates the wide CCT range of the GODOX Litemons C30R, from warm 1800K to cool 10000K, suitable for various lighting conditions.

## Charging and Battery

The GODOX Litemons C30R is equipped with a 3350mAh battery, providing approximately 45 minutes of runtime at full power. It can operate for up to 276 minutes at 50% brightness. The device supports USB-C charging and can be used simultaneously while charging, ensuring continuous operation for longer sessions.

# Setup in Your Way

Whether handheld, mounted on a camera, on a light stand, or on a tripod, you can set it up any way you like using the 1/4" threaded hole.



Image: The GODOX Litemons C30R connected to a USB-C charging cable, indicating its ability to charge while in use.

## Maintenance

- Keep the device dry. Do not handle with wet hands.
- Clean the light panel with a soft, dry cloth. Avoid using harsh chemicals or abrasive materials.
- Ensure proper ventilation during extended use to prevent overheating. The built-in fan helps with heat dissipation.
- Store the light in a cool, dry place away from direct sunlight and extreme temperatures.

## Troubleshooting

- **Light not turning on:** Ensure the battery is charged. Connect to a USB-C power source.

- **Short battery life:** Reduce brightness settings. Ensure the device is fully charged before use.
- **Controls unresponsive:** Power off the device and restart. If issues persist, contact customer support.
- **Overheating:** The device has a built-in fan for cooling. If it feels excessively hot, reduce brightness or allow it to cool down.

## Specifications

Product Dimensions	5.12 x 3.03 x 1.57 inches
Item Weight	8.7 ounces
Item Model Number	C30R
Battery Life (Full Power)	45 minutes
Connectivity Technology	Bluetooth
Color Temperature Range	1,800K-10,000K
UPC	850071741513

## Warranty and Support

For warranty information, technical support, or any inquiries regarding your GODOX Litemons C30R, please refer to the official GODOX website or contact their customer service directly. Keep your purchase receipt for warranty claims.