

ECEVT E-SW800P

ECEVT 30.5 Cu.Ft Commercial Beverage Refrigerator Instruction Manual

Model: E-SW800P

1. INTRODUCTION

Thank you for choosing the ECEVT 30.5 Cu.Ft Commercial Beverage Refrigerator. This manual provides essential information for the safe and efficient operation, installation, and maintenance of your new appliance. Please read this manual thoroughly before use and retain it for future reference.

This commercial display cooler is designed for optimal beverage storage and display in various commercial settings, featuring a secure locking door, efficient cooling, adjustable shelving, and LED lighting.

2. SAFETY INFORMATION

To reduce the risk of fire, electric shock, or injury, always follow these basic precautions:

- Read all instructions before using the appliance.
- Ensure the appliance is properly grounded.
- Do not operate the appliance with a damaged cord or plug.
- Keep ventilation openings clear of obstruction.
- Do not store explosive substances such as aerosol cans with a flammable propellant in this appliance.
- Unplug the appliance before cleaning or performing any maintenance.
- Do not allow children to play with or inside the appliance.
- For indoor use only.

3. PRODUCT OVERVIEW

The ECEVT 30.5 Cu.Ft Commercial Beverage Refrigerator is a robust and efficient unit designed for commercial use. It features a dual-layer glass door, LED lighting, adjustable shelves, and castor wheels for easy mobility.

Key Features:

- **Secure Locking Door:** Prevents unauthorized access to contents.
- **Optimal Cooling:** Maintains a temperature range of 32°F to 47°F (0°C to 8°C).
- **Energy Efficiency:** Utilizes R290 compressors for efficient cooling.
- **Spacious & Customizable Storage:** 10 adjustable shelves for flexible organization.
- **Dual-Layer Glass Door:** Minimizes condensation and maintains internal temperature.
- **LED Lighting:** Enhances product visibility.
- **Easy Mobility:** Built-in locking castor wheels for convenient relocation.

Product Dimensions and Capacity:

The refrigerator measures approximately 25.2"D x 41.4"W x 79.6"H. It offers a large capacity suitable for various beverages and food items.

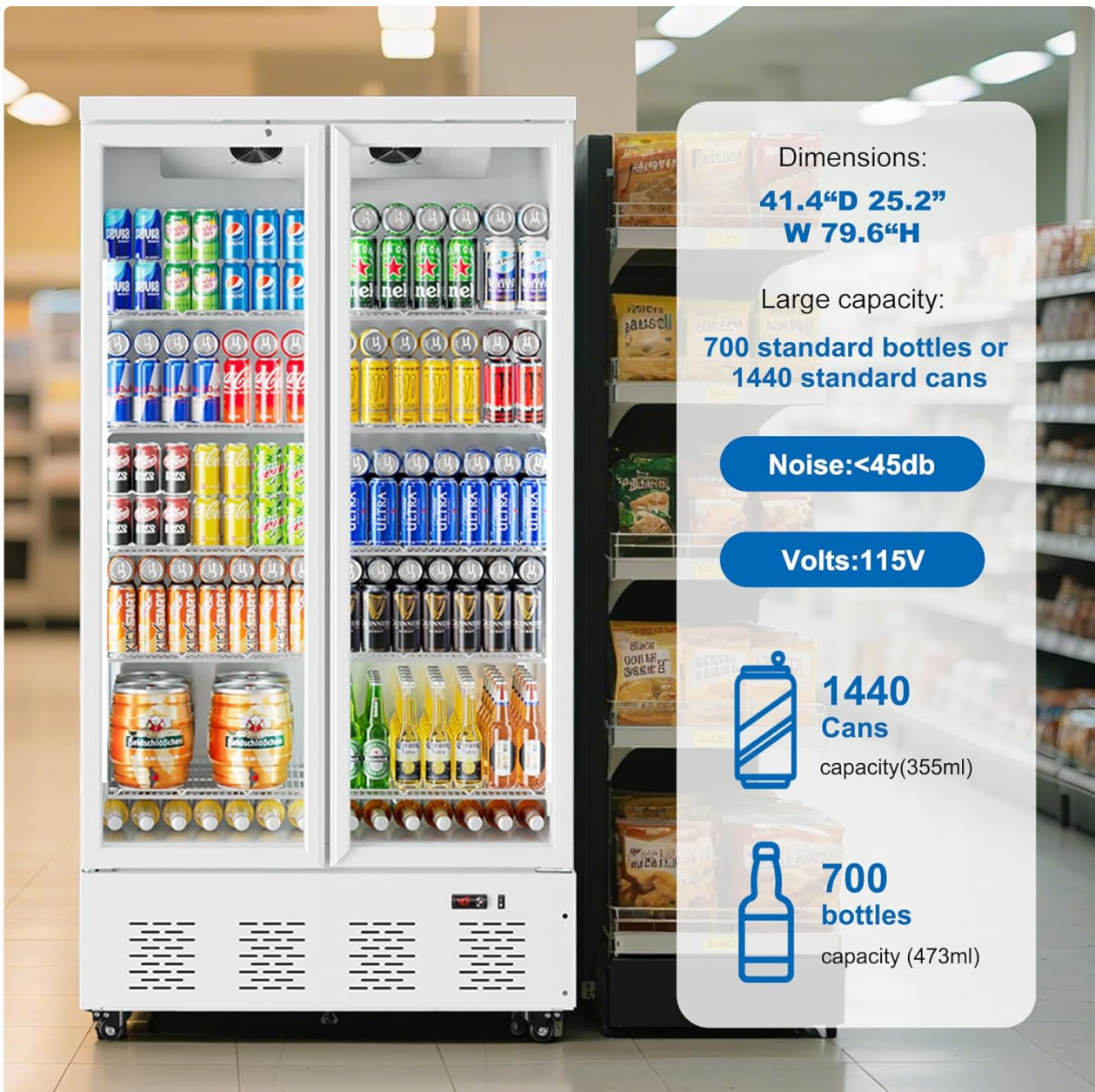


Image: ECEVT 30.5 Cu.Ft Commercial Beverage Refrigerator showcasing its dimensions (41.4"D 25.2"W 79.6"H) and large capacity for 1440 standard cans or 700 standard bottles. It also highlights a noise level of less than 45dB and 115V operation.

Main Features Overview:

DISPLAY REFRIGERATOR MAIN FEATURES



Image: A visual representation of the refrigerator's main features, including efficient R290 refrigerant, digital control panel, 10W energy-efficient LED lighting, secure fridge lock, 360° swiveling casters, and shelves capable of holding 155lbs load each.

Versatile Applications:



Image: The ECEVT Commercial Refrigerator is shown storing a variety of items such as desserts, fruits, beverages, vegetables, beer, and flowers, highlighting its versatility for keeping different products fresh.

WHERE WILL YOU USE IT?

Versatile for Commercial & Large Household Use – From Stores to Parties

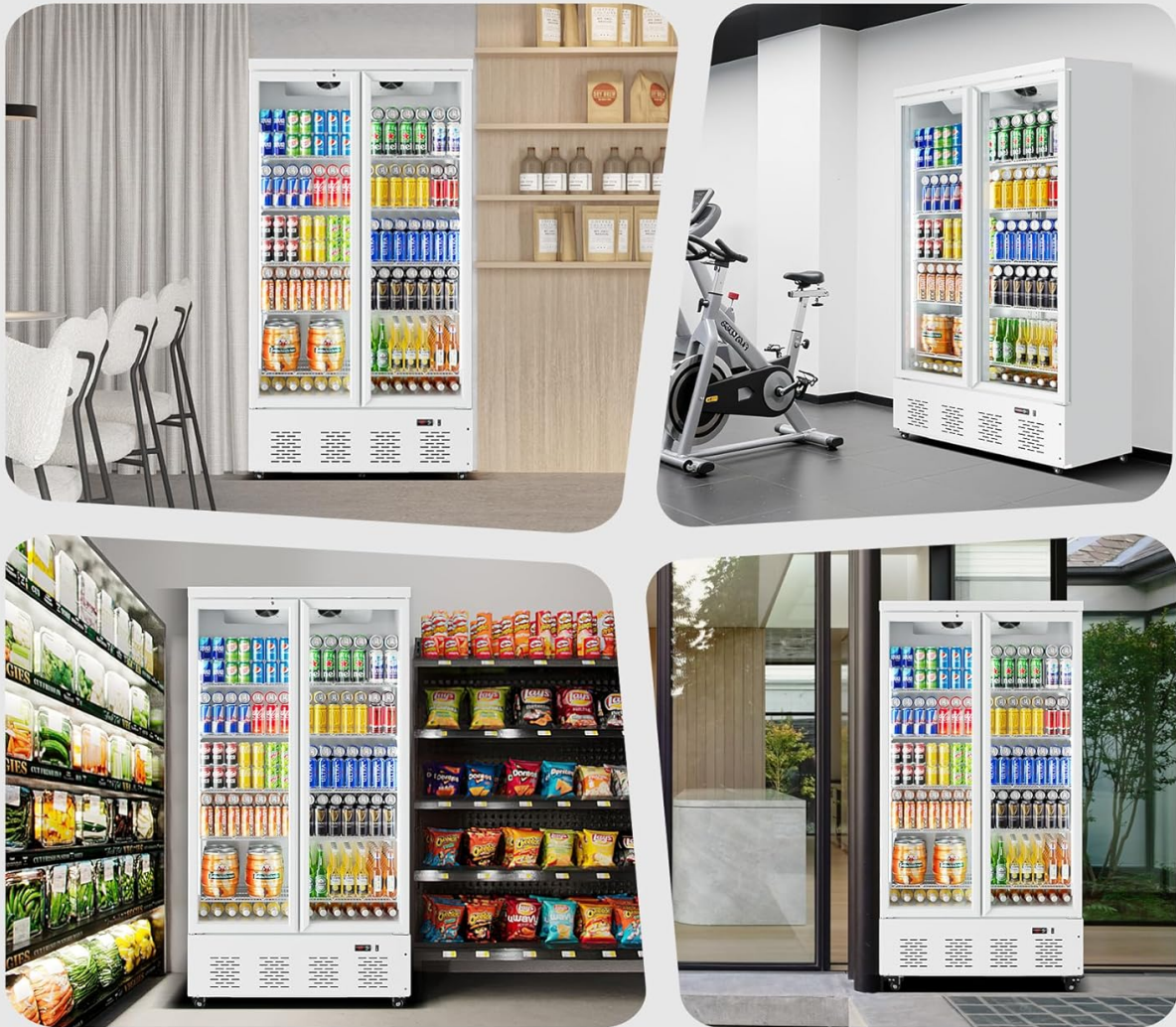


Image: A collage showing the ECEVT Commercial Refrigerator in different environments, including a cafe, gym, retail store, and outdoor patio, illustrating its versatility for commercial and large household use.

Official Product Video:

Your browser does not support the video tag.

Video: An official product video from ECEVT-US showcasing the 30.5 Cu.Ft White Commercial Beverage Refrigerator, highlighting its features and design.

4. SETUP

4.1 Unpacking

- Carefully remove all packaging materials.
- Remove any plastic protective film from the exterior surfaces.
- Inspect the refrigerator for any shipping damage. Report any damage immediately to the carrier and retailer.

4.2 Placement

- Place the refrigerator on a firm, level surface capable of supporting its weight when fully loaded.
- Ensure adequate ventilation around the unit. Maintain at least 4 inches (10 cm) of space from walls or other appliances to allow for proper airflow and heat dissipation.
- Avoid direct sunlight or proximity to heat sources (e.g., ovens, radiators) to ensure optimal cooling performance and energy efficiency.
- After placement, allow the refrigerator to stand upright for at least 24 hours before plugging it in. This allows the refrigerant to settle.

4.3 Shelf Installation

The refrigerator comes with 10 adjustable shelves. To install or adjust shelves:

1. Open the refrigerator door.
2. Locate the shelf support brackets on the interior walls.
3. Insert the shelf into the desired height, ensuring it is level and securely seated on all four support brackets.
4. Adjust as needed to accommodate different product sizes.

Your browser does not support the video tag.

Video: A demonstration of adjusting the shelves within a commercial display refrigerator, showing how to remove and re-position them to suit various product heights.

5. OPERATING INSTRUCTIONS

5.1 Powering On

After allowing the refrigerator to stand for 24 hours, plug the power cord into a dedicated 115V electrical outlet. The unit will power on and the digital display will illuminate.

5.2 Temperature Control

The refrigerator features a user-friendly digital temperature display and intuitive controls. The optimal temperature range is 32°F to 47°F (0°C to 8°C). The unit is typically pre-set to an optimal temperature from the factory.

- **To view current temperature:** The display shows the current internal temperature.
- **To adjust set temperature:** Use the up and down arrow buttons on the control panel to set your desired temperature. Press the 'Set' button to confirm.
- **Toggle Fahrenheit/Celsius:** Hold the up and down arrow buttons simultaneously to switch between Fahrenheit (°F) and Celsius (°C).

Your browser does not support the video tag.

Video: A demonstration of the digital temperature control panel on a commercial display refrigerator, showing how to adjust the temperature settings and toggle between Fahrenheit and Celsius.

5.3 LED Light Operation

The internal LED lighting can be controlled via a switch on the control panel. This enhances visibility of products, especially in low-light environments.

5.4 Door Lock

The refrigerator is equipped with a secure locking door and a set of keys to prevent unauthorized access.

- To lock the door, insert the key into the lock cylinder and turn.
- To unlock, insert the key and turn in the opposite direction.

Your browser does not support the video tag.

Video: A demonstration of the locking mechanism on a commercial beverage refrigerator, showing how to secure the doors with a key.

6. MAINTENANCE

6.1 Cleaning

- **Interior:** Regularly clean the interior with a mild detergent and warm water. Rinse thoroughly and dry completely to prevent odors and mildew.
- **Exterior:** Wipe down the exterior surfaces with a soft cloth and mild cleaner. Avoid abrasive cleaners or solvents.
- **Condenser Coils:** Periodically clean the condenser coils (located at the bottom rear of the unit) with a brush or vacuum cleaner to ensure efficient operation. Dirty coils can reduce cooling efficiency and increase energy consumption.

6.2 Defrosting

This refrigerator features an automatic defrost system, eliminating the need for manual defrosting. Ensure the drain pan is clear and clean to allow proper water evaporation.

6.3 Door Seal Inspection

Regularly inspect the door gaskets for any signs of wear or damage. A tight seal is crucial for maintaining internal temperature and energy efficiency. Replace damaged gaskets promptly.

7. TROUBLESHOOTING

Before contacting customer service, please refer to the following common issues and solutions:

Problem	Possible Cause	Solution
Refrigerator not cooling	Power cord unplugged; circuit breaker tripped; temperature set too high; condenser coils dirty; door not closed properly.	Check power connection; reset breaker; adjust temperature setting; clean condenser coils; ensure door is sealed.
Excessive noise	Unit not level; loose parts; fan obstruction.	Level the unit; check for loose components; clear any fan obstructions.
Excessive condensation	High humidity; door left open frequently; faulty door gasket.	Ensure proper ventilation; minimize door openings; inspect and replace door gasket if necessary.

8. SPECIFICATIONS

Feature	Detail
Brand	ECEVT

Feature	Detail
Model Number	E-SW800P
Capacity	30.5 Cubic Feet
Product Dimensions	25.2"D x 41.4"W x 79.6"H
Item Weight	309 pounds
Installation Type	Freestanding
Color	White
Voltage	115 Volts
Defrost System	Automatic
Number of Doors	2
Door Material Type	Glass
Shelf Type	Stainless Steel
Number of Shelves	10
Special Features	Adjustable Shelves

9. WARRANTY AND SUPPORT

This product includes an instruction manual in the box. For specific warranty details and customer support, please refer to the documentation included with your purchase or contact ECEVT customer service directly. Keep your purchase receipt for warranty claims.