

Estink PRO70

Estink PRO70 True Wireless Earbuds User Manual

Model: PRO70

INTRODUCTION

Thank you for choosing the Estink PRO70 True Wireless Earbuds. This manual provides detailed instructions on how to set up, operate, and maintain your earbuds to ensure optimal performance and longevity. Please read this manual thoroughly before using the product.

PACKAGE CONTENTS

- 1 x BT Earphones (PRO70 True Wireless Earbuds)
- 1 x Charging Box
- 1 x Charging Cable
- 1 x User Manual (this document)

PRODUCT OVERVIEW

The Estink PRO70 True Wireless Earbuds feature advanced BT 5.3 technology for stable connectivity, smart touch controls, and a comfortable ergonomic design. The charging case includes an LED digital display for battery status.



Image: The Estink PRO70 True Wireless Earbuds, black in color, resting inside their transparent charging case. The case is open, revealing the earbuds and an internal digital display showing "80", indicating battery level. The case has a sleek, rounded design with green accents.



Image: A pair of Estink PRO70 earbuds and their charging case, illuminated with green light, against a dark, reflective surface. Text overlays highlight key features: "Optional wireless charging", "low power consumption", "Intelligent digital display", and "Stylish look". One earbud is shown outside the case.



Image: Two views of the black Estink PRO70 True Wireless Earbuds and their charging case. One view shows the case open with earbuds inside, displaying the digital battery indicator. The other view shows the closed charging case next to a single earbud, all on a dark, reflective surface, emphasizing the black color option.

SETUP

1. Charging the Earbuds and Charging Box

Before first use, fully charge the earbuds and the charging box. The charging box has a 300mAh battery, and each earbud has a 45mAh battery. A full charge takes approximately 1-2 hours.

1. Connect the provided charging cable to the charging box and a USB power source.
2. Place the earbuds into the charging box. Ensure they are correctly seated to initiate charging.
3. The LED digital display on the charging box will indicate the charging status and battery level.

Wireless charging of charging chamber Full power

Wireless charging keeps your PRO70 fully charged
and gives you plenty of power
No complicated data line, convenient and fast.

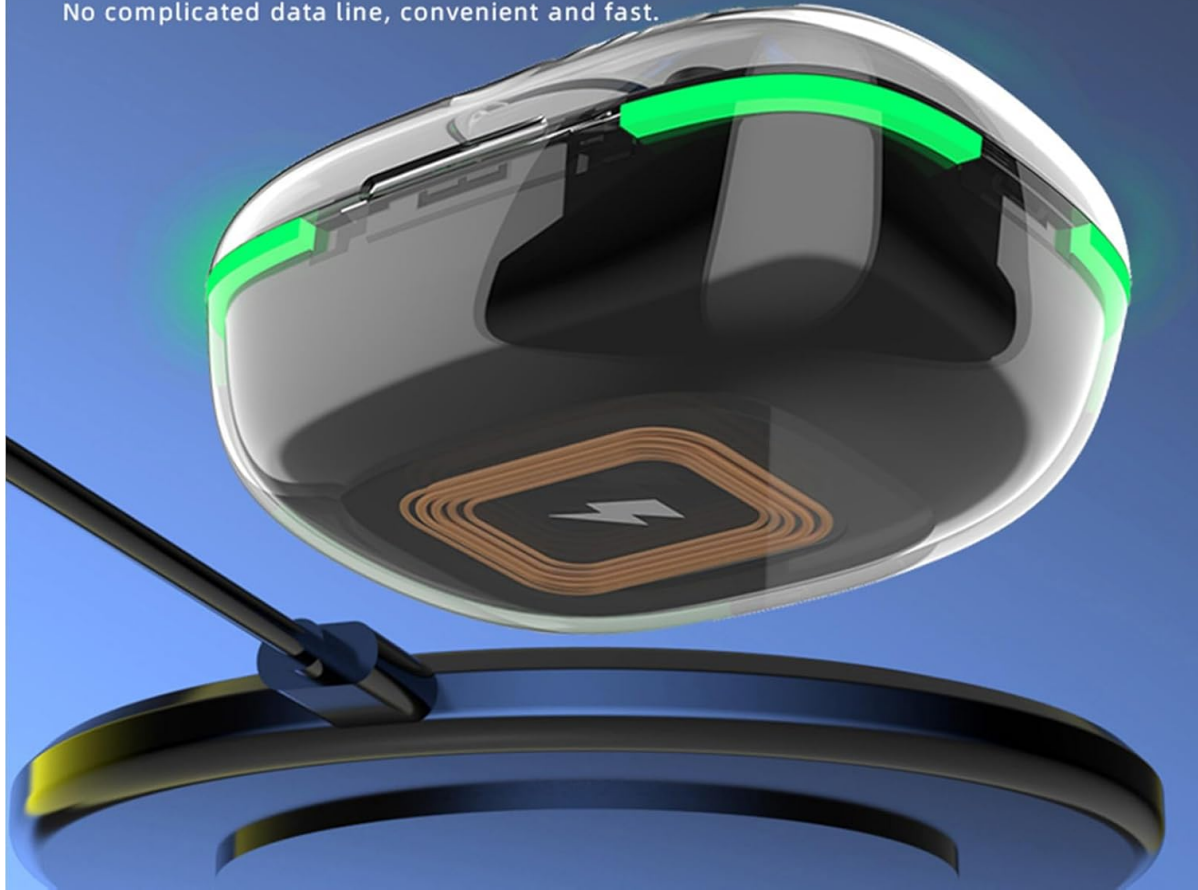


Image: The Estink PRO70 charging case placed on a wireless charging pad, indicating its wireless charging capability. The case is illuminated with green light, and text highlights "Wireless charging of charging chamber" and "Full power keeps your PRO70 fully charged and gives you plenty of power. No complicated data line, convenient and fast."

Intelligent digital display stick out a mile

LED electric quantity digital display, charging
warehouse electric quantity list, digital display
More prominent, with cool lighting, full of design sense.



Electric quantity of charging bin

Image: A close-up view of the Estink PRO70 charging case with the lid open, clearly showing the LED digital display in the center, which reads "80". The earbuds are inside the case, and green light emanates from the edges. Text indicates "Intelligent digital display stick out a mile" and "LED electric quantity digital display, charging warehouse electric quantity list, digital display More prominent, with cool lighting, full of design sense."

2. Initial Pairing

The earbuds feature easy one-step pairing. After the first successful pairing, they will automatically connect to your device when taken out of the charging case.

1. Ensure Bluetooth is enabled on your smartphone or device.
2. Open the charging case and take out both earbuds. They will automatically enter pairing mode.
3. On your device, search for Bluetooth devices and select "PRO70" from the list.
4. Once connected, you will hear a confirmation prompt, and the earbuds will be ready for use.



Image: A stylized diagram illustrating the Bluetooth 5.3 chip, emphasizing its advanced capabilities. Text highlights "V5.3 Newly upgraded chip, more stable transmission, easier connection, call and listen to music. More smooth phone stable game is not stuck, movies constantly sound." Below, metrics like "15m Transmission distance", "99% Bluetooth compatible devices", and "5.3 Solid connection without delay" are displayed.

OPERATING INSTRUCTIONS

Power On/Off

- **Power On:** Take the earbuds out of the charging case. They will automatically power on.
- **Power Off:** Place the earbuds back into the charging case. They will automatically power off and begin charging.

Smart Touch Controls

The PRO70 earbuds feature intuitive touch controls on each earbud for various functions.

Touch operation

The headset can be operated with a light touch

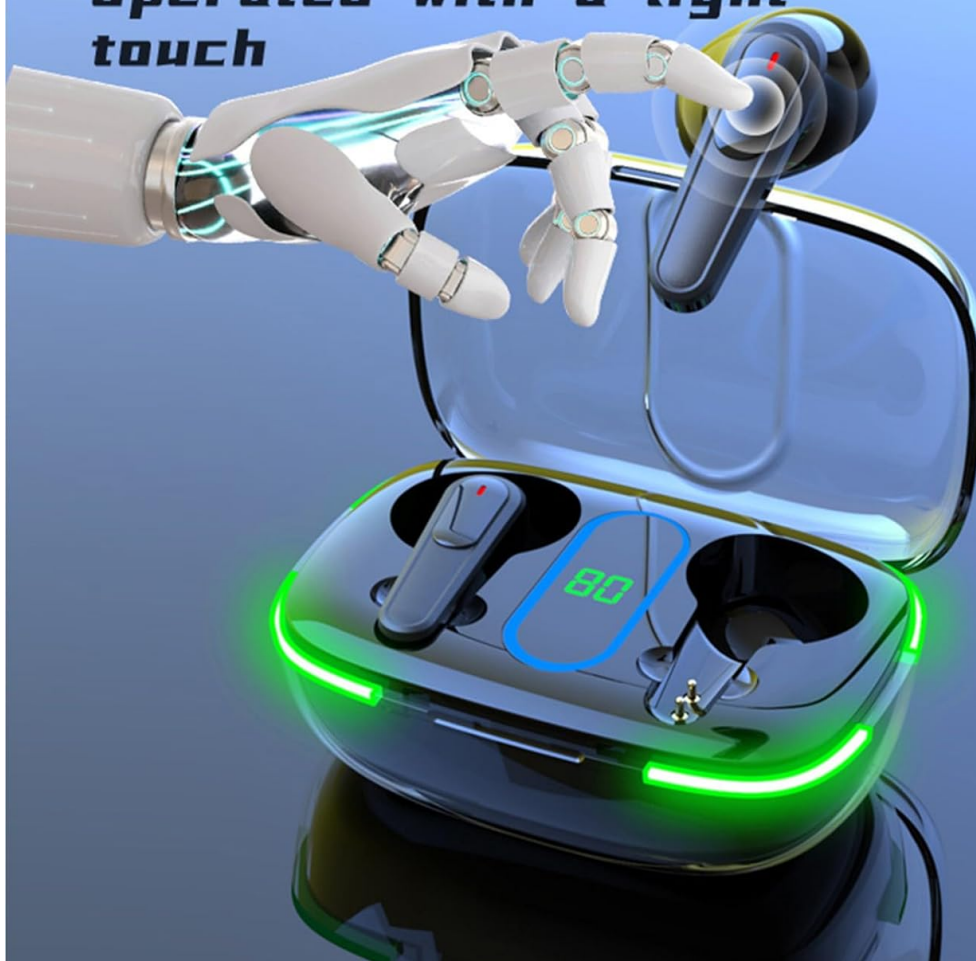


Image: A robotic hand gently touching the stem of an Estink PRO70 earbud, demonstrating the touch operation feature. The earbud is shown outside its charging case, which is open and illuminated. Text states "Touch operation" and "The headset can be operated with a light touch."

Action	Function
Single Tap	Play/Pause music, Answer/End call
Double Tap (Left Earbud)	Previous Track
Double Tap (Right Earbud)	Next Track
Triple Tap (Left Earbud)	Volume Down
Triple Tap (Right Earbud)	Volume Up
Long Press (2 seconds)	Reject Call, Activate Voice Assistant

Single or Double Earbud Use

The PRO70 earbuds support independent use of either the left or right earbud. You can use one earbud while the other is in the charging case, or share one earbud with a friend.



Image: The Estink PRO70 charging case with one earbud inside and the other earbud placed on a smartphone screen, demonstrating the ability to use a single earbud independently. Text states "Master save switch Support any single ear use" and "Any headset can be individually matched and connected. It does not affect the use of the other headset."

MAINTENANCE

Cleaning

- Regularly clean the earbuds and charging case with a soft, dry, lint-free cloth.
- Do not use abrasive cleaners, alcohol, or chemical solvents.
- Ensure charging contacts on both earbuds and case are clean and dry.

Water Resistance (IPX4)

The PRO70 earbuds are IPX4 water-resistant, meaning they are protected against splashing water from any direction. This makes them suitable for sports and daily activities where they might encounter sweat or light rain.

- Do not submerge the earbuds or charging case in water.
- Avoid exposing them to high-pressure water streams.
- Ensure earbuds are dry before placing them back into the charging case to prevent damage.

Storage

When not in use, store the earbuds in their charging case to protect them and keep them charged. Store in a cool, dry place away from extreme temperatures.

TROUBLESHOOTING

Problem	Solution
Earbuds not pairing	Ensure earbuds are charged. Turn off and on Bluetooth on your device. Forget "PRO70" from your device's Bluetooth list and re-pair.
Only one earbud working	Place both earbuds back into the charging case, close the lid, wait a few seconds, then take them out again. Ensure both earbuds are charged.
No sound	Check device volume and earbud volume. Ensure earbuds are connected to the correct device.
Charging issue	Ensure charging cable is securely connected. Clean charging contacts on earbuds and case. Try a different charging cable or power source.

SPECIFICATIONS

Feature	Detail
Model	PRO70
Material	ABS
BT Version	5.3
Earphone Battery	45mAh each
Charging Box Battery	300mAh
Wireless Distance	10m
Call Time	3-4 hours
Play Time	3-4 hours
Charging Time	1-2 hours
Water Resistance	IPX4
Item Weight	38g / 1.34oz (earbuds + case)
Package Size	15.1 * 7.8 * 3.5cm / 5.94 * 3.07 * 1.37in
Package Weight	59g / 2.08oz



Image: A diagram showing the dimensions of the Estink PRO70 charging case. The measurements are indicated as 15.1cm / 5.94in (length), 7.8cm / 3.07in (width), and 3.5cm / 1.37in (height), providing a clear understanding of the product's physical size.

WARRANTY AND SUPPORT

For warranty information and customer support, please refer to the purchase platform or contact Estink customer service directly. Keep your proof of purchase for any warranty claims.