

GoveeLife H5110 (Sensor), H5151 (Gateway)

GoveeLife WiFi Hygrometer Thermometer H5110 & H5151 User Manual

Comprehensive Guide for Smart Temperature and Humidity Monitoring

1. INTRODUCTION

Thank you for choosing the GoveeLife WiFi Hygrometer Thermometer. This device allows you to monitor temperature and humidity levels in various environments remotely via the Govee Home app. This manual provides detailed instructions for setup, operation, and maintenance to ensure optimal performance of your H5110 sensors and H5151 gateway.



Figure 1: GoveeLife H5110 Sensors and H5151 Gateway with App Interface

2. SETUP

2.1. Unboxing and Components

Before you begin, ensure all components are present in the package:

- GoveeLife H5151 WiFi Gateway
- GoveeLife H5110 Temperature and Humidity Sensors (9-pack)
- AAA Batteries (pre-installed in sensors)
- Lanyards for sensors
- User Manual

2.2. Battery Installation and Lanyard Attachment (for H5110 Sensors)

The H5110 sensors come with pre-installed AAA batteries. To activate, remove the battery insulation tab. You can also attach the included lanyard for convenient placement.

1. Gently open the back cover of the sensor.
2. Remove the battery insulation tab if present.
3. Insert the lanyard loop through the designated hole on the sensor.
4. Secure the lanyard by pulling the strap through the loop.
5. Close the back cover securely.

Bluetooth Remote Monitoring

Our sensor has a 262ft Bluetooth range



Figure 2: Battery and Lanyard Installation for H5110 Sensor

2.3. Govee Home App Installation

Download the Govee Home app from the App Store (iOS) or Google Play (Android) and create an account or log in.

2.4. Connecting the H5151 WiFi Gateway

The gateway acts as a central hub for your sensors, enabling remote monitoring via WiFi.

1. Plug the H5151 gateway into a power outlet. The indicator light will flash.

2. Open the Govee Home app and tap the "+" icon in the top right corner to add a new device.
3. Search for "H5151" and select the Bluetooth WiFi Gateway.
4. Follow the in-app instructions to complete the pairing process. You may need to press the button on the gateway to confirm.
5. Connect the gateway to your 2.4GHz WiFi network. **Note: This device only supports 2.4GHz WiFi networks.**

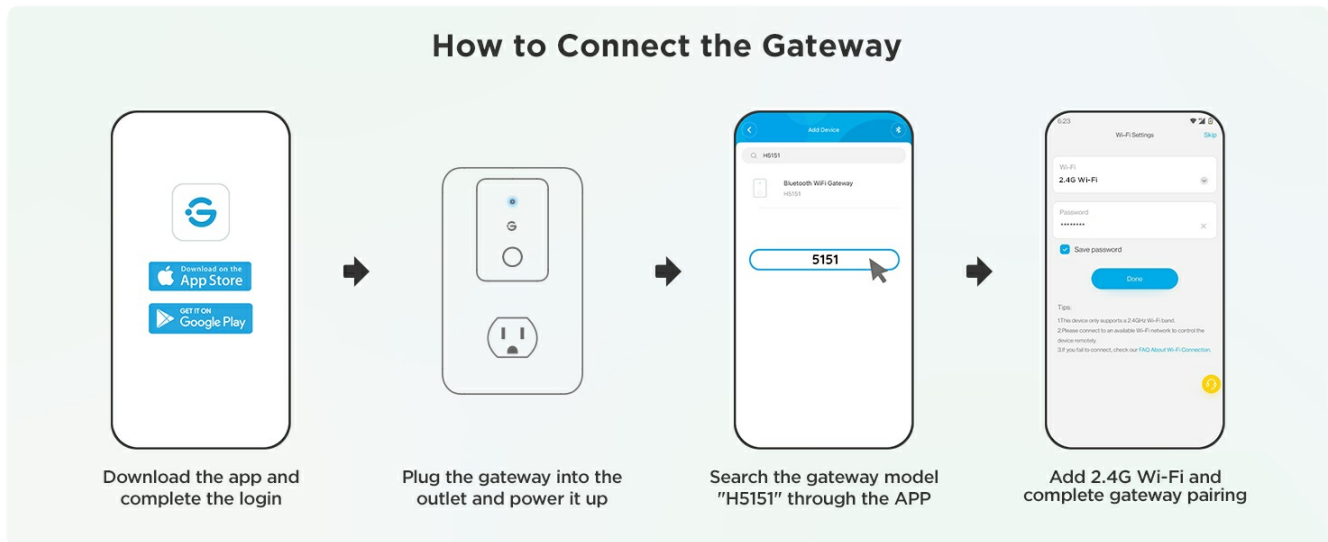


Figure 3: Gateway Connection Steps via Govee Home App

2.5. Connecting H5110 Sensors to the Gateway

Once the gateway is connected, you can add your H5110 sensors.

1. In the Govee Home app, navigate to the gateway's device page.
2. Tap the "+" icon to add a sub-device (sensor).
3. Search for "H5110" and select your sensor from the list of nearby devices.
4. The sensor's LED will flash red. Press the button on the sensor to complete the pairing.
5. Name your sensor for easy identification (e.g., "Bedroom Sensor", "Wine Cellar Sensor").

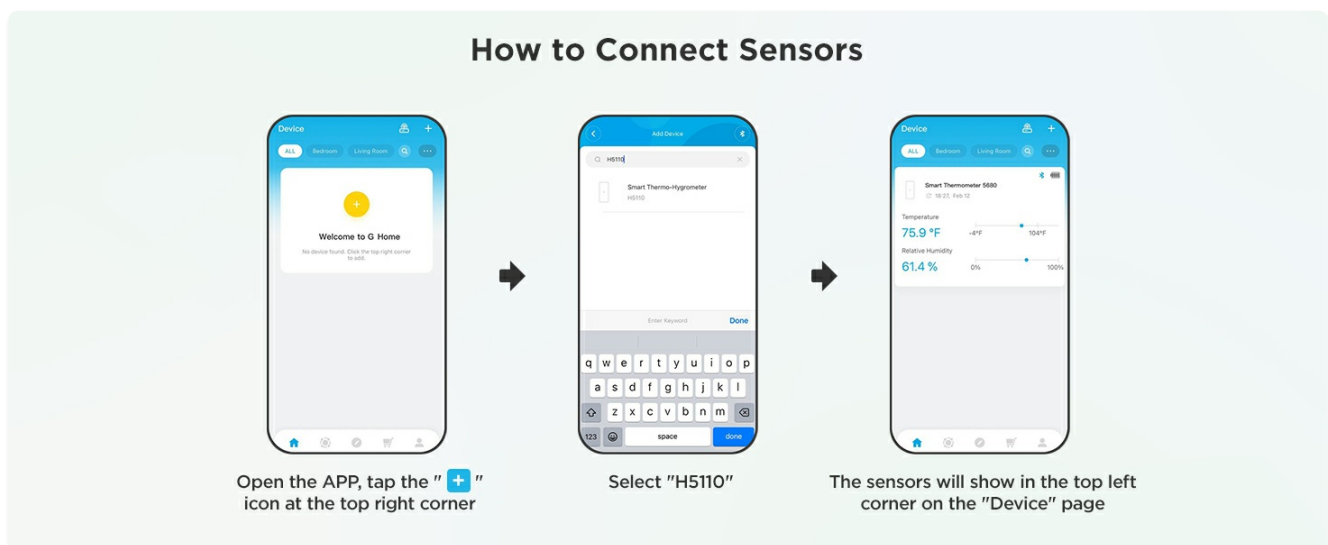


Figure 4: Sensor Connection Steps via Govee Home App

How to Add Sensors to the Gateway?

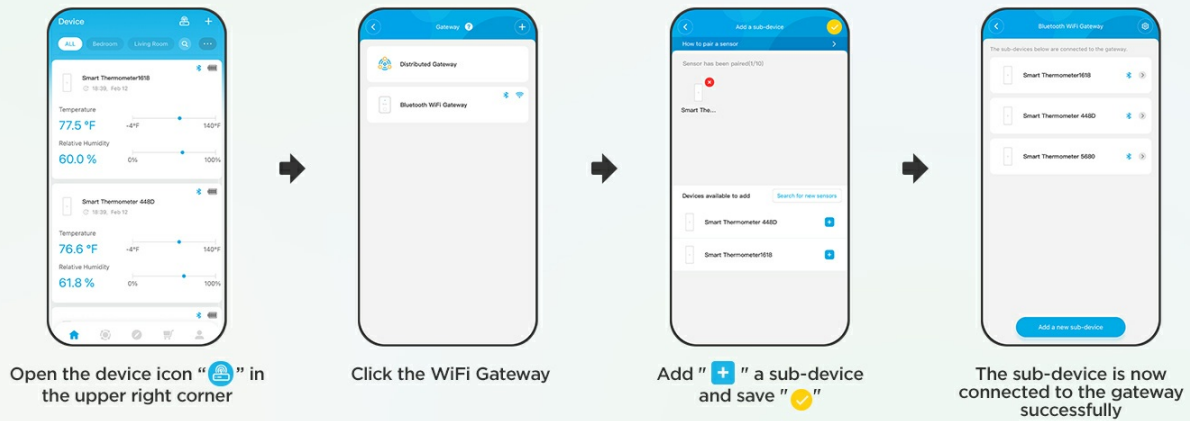


Figure 5: Adding Sensors to the Gateway

Your browser does not support the video tag.

Video 1: GoveeLife H5110 How to Connect. This video demonstrates the process of connecting the gateway and sensors to the Govee Home app.

3. OPERATING THE DEVICE

3.1. Monitoring Data

Once connected, you can view real-time temperature and humidity data from all your sensors within the Govee Home app. The data refreshes every 2 seconds, providing up-to-date information.

Real-time Alerts

Reminds you of temperature and humidity changes via APP and emails

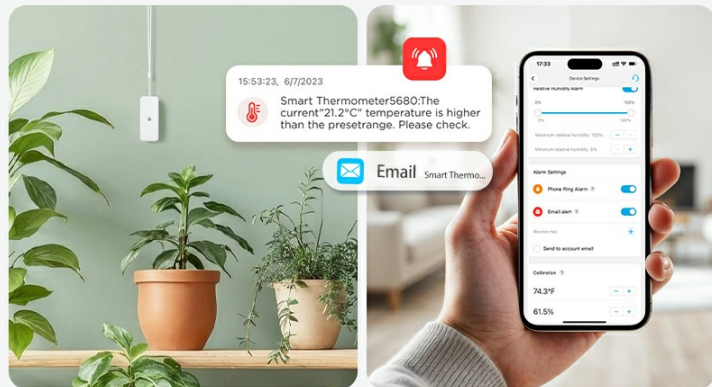


Figure 6: Real-time Monitoring via Govee Home App

3.2. Setting Alarms

The app allows you to set custom temperature and humidity thresholds. If readings exceed or fall below these preset values, you will receive notifications via the app and email.

1. Select a sensor in the Govee Home app.
2. Navigate to the alarm settings.
3. Set your desired maximum and minimum temperature and humidity values.
4. Enable app notifications and email alerts.

Real-time Alerts

Reminds you of temperature and humidity changes via APP and emails



Figure 7: Setting Temperature and Humidity Alarms

3.3. Data Storage and Export

The Govee Home app stores historical data, allowing you to view trends and export records.

- View temperature and humidity trend charts for the past 20 days directly in the app.
- Export data for up to 2 years for detailed analysis.

Data Track and Export

View trends for the past 20 days and export data for the past 2 years

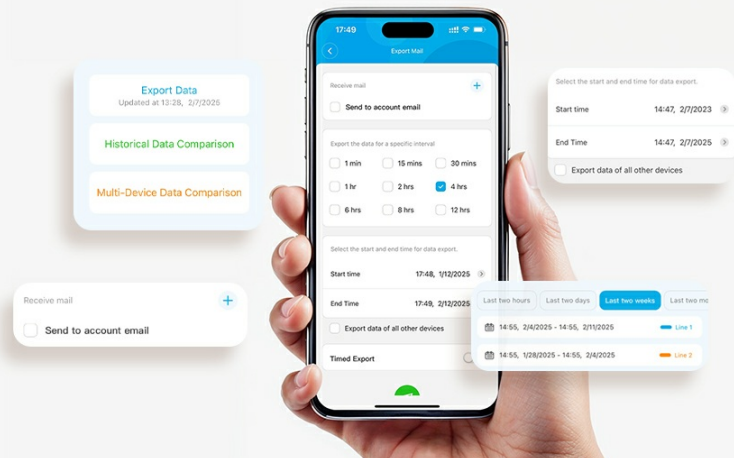


Figure 8: Data Storage and Export Features

4. MAINTENANCE

4.1. Battery Replacement

The H5110 sensors are powered by 2 AAA batteries, offering up to 2 years of battery life. When the battery is low, the app will notify you. Replace batteries as follows:

1. Gently open the back cover of the sensor.
2. Remove the old AAA batteries.
3. Insert two new AAA batteries, ensuring correct polarity.
4. Close the back cover securely.

Long-Lasting Battery Life

It can operate for up to 2 years with just 2 AAA batteries, which means you don't have to worry about frequent battery replacements



Figure 9: Long-Lasting Battery Life (up to 2 years)

4.2. Cleaning

To maintain accurate readings, keep the sensors clean. Wipe the exterior with a soft, dry cloth. Avoid using abrasive cleaners or submerging the device in water.

5. TROUBLESHOOTING

- **Device not connecting to app:** Ensure the gateway is plugged in and its indicator light is on. Verify your smartphone's Bluetooth is enabled. For WiFi connection, confirm your router is broadcasting a 2.4GHz network and you have entered the correct password.
- **Inaccurate readings:** Ensure the sensor is placed in a location with good airflow, away from direct sunlight, heat sources, or extreme drafts. Allow some time for the sensor to stabilize after placement or battery replacement.
- **No app notifications:** Check your app's notification settings and your phone's system notification settings to ensure Govee Home has permission to send alerts. Verify alarm thresholds are correctly set in the app.
- **Sensors losing connection:** Ensure sensors are within the Bluetooth range of the gateway (up to 262ft/80m in open areas). Obstacles like walls and floors can reduce this range.

Your browser does not support the video tag.

Video 2: GoveeLife H5110 Smart Thermo-Hygrometer with Wifi Gateway. This video provides an overview of the product's features and functionality.

6. SPECIFICATIONS

Feature	Detail
Model Numbers	H5110 (Sensor), H5151 (Gateway)
Temperature Accuracy	$\pm 0.54^{\circ}\text{F}$ / $\pm 0.3^{\circ}\text{C}$
Humidity Accuracy	$\pm 3\%$ RH
Data Refresh Rate	Every 2 seconds





Connectivity	WiFi (2.4GHz only), Bluetooth
Gateway Pairing Capacity	Up to 10 sensors
Battery Type (Sensors)	2 x AAA batteries
Battery Life (Sensors)	Up to 2 years
Data Storage	20 days (in-app trend), 2 years (exportable)

7. WARRANTY AND SUPPORT

GoveeLife products come with a standard warranty. For detailed warranty information, product support, or technical assistance, please visit the official GoveeLife website or contact their customer service directly. You can often find FAQs and troubleshooting guides on their support pages.

For further assistance, please refer to the GoveeLife support resources available online.

Related Documents - H5110 (Sensor), H5151 (Gateway)

 User Manual <small>Model: H5110 Smart Thermo-Hygrometer</small>	GoveeLife H5110 Smart Thermo-Hygrometer User Manual User manual for the GoveeLife H5110 Smart Thermo-Hygrometer. Learn about specifications, installation, app pairing, usage, and troubleshooting for this humidity and temperature sensor.
 User Manual <small>Model: H5104 Smart Thermo-Hygrometer</small>	GoveeLife H5104 Smart Thermo-Hygrometer User Manual User manual for the GoveeLife H5104 Smart Thermo-Hygrometer. Learn how to use the device, connect to the Govee Home app, and troubleshoot common issues.
 User Manual <small>Model: H5108+H5151 Smart Thermometer R1 with Wi-Fi Gateway</small>	GoveeLife Smart Thermometer R1 User Manual (H5108+H5151) User manual for the GoveeLife Smart Thermometer R1 with Wi-Fi Gateway (Models H5108 and H5151), covering setup, specifications, troubleshooting, and customer service.
 User Manual <small>Model: H5105 Smart Thermo-Hygrometer 2s</small>	GoveeLife H5105 Smart Thermo-Hygrometer 2s User Manual User manual for the GoveeLife H5105 Smart Thermo-Hygrometer 2s, detailing its features, specifications, setup, troubleshooting, and customer support. Monitor temperature and humidity accurately with this device.

<div><div>GoveeLife</div><div>User Manual</div><div>Model:H5074 Smart Thermo-Hygrometer</div></div>	<div>GoveeLife H5074 Smart Thermo-Hygrometer User Manual</div> <div>User manual for the GoveeLife H5074 Smart Thermo-Hygrometer, detailing setup, specifications, app connectivity, and troubleshooting for accurate temperature and humidity monitoring.</div>
<div><div>GoveeLife</div><div>User Manual</div><div>Model:H5103 Wi-Fi Thermo-Hygrometer</div></div>	<div>GoveeLife H5103 Wi-Fi Thermo-Hygrometer User Manual</div> <div>Comprehensive user manual for the GoveeLife H5103 Wi-Fi Thermo-Hygrometer, detailing setup, features, specifications, and troubleshooting for indoor temperature and humidity monitoring.</div>

Documents - GoveeLife – H5110 (Sensor), H5151 (Gateway)

H5108 英语说明书

版本：1.0

料号：

成型尺寸：60X60(mm)

材质：80G书页纸

工艺：单色印刷

折叠方式：骑马钉

页数：16页

[Govee H5108 Refrigerator Thermometer User Manual](#)

User manual for the Govee H5108 Refrigerator Thermometer with Wi-Fi Gateway, including setup, specifications, troubleshooting, and customer service information.

lang:en score:20 filesize: 1.45 M page_count: 17 document date: 2023-08-18