

UMEIJA c208-03

UMEIJA Magnetic Wireless Charger User Manual

Model: c208-03

1. INTRODUCTION

Thank you for choosing the UMEIJA Magnetic Wireless Charger. This 15W fast charging pad is designed to provide a seamless and efficient charging experience for your compatible devices, including iPhone 16/15/14/13/12 Series and AirPods 2/3/Pro. This manual provides detailed instructions on how to set up, operate, and maintain your charger to ensure optimal performance and longevity.

2. PRODUCT OVERVIEW

2.1 Package Contents

- 1 x UMEIJA Magnetic Wireless Charger
- 1 x Type-C Charging Cable (3.96 feet)
- 1 x User Manual (this document)

2.2 Key Features

- **15W Fast Wireless Charging:** Delivers up to 15W power for rapid charging of compatible iPhone models.
- **Strong Magnetic Alignment:** Features an upgraded N52 magnet for precise and secure attachment to MagSafe-compatible devices, ensuring optimal charging efficiency.
- **Universal Compatibility:** Specifically designed for iPhone 16/15/14/13/12 series and AirPods 2/3/Pro.
- **Safe Protection:** Built-in charging management chip with multiple protections including overcurrent, overvoltage, overtemperature, short circuit, and foreign object detection. CE, UL, FCC, and RoHS certified.
- **Sleep-Friendly LED Indicator:** Soft green breathing light indicates charging status and automatically turns off after a few seconds to avoid disturbing sleep.
- **Portable and Compact Design:** Ultra-slim (0.6cm) and lightweight (45g) for easy portability.
- **Temp° Guard Technology:** Monitors temperature to prevent battery overheating and prolong device battery life.

2.3 Product Diagram



Figure 2.3.1: UMEIJA Magnetic Wireless Charger with its USB-C cable.



Figure 2.3.2: Overview of the UMEIJA MagSafe Charger, highlighting compatibility with iPhone and AirPods.

3. SETUP

1. **Connect the Charger:** Insert the USB-C end of the provided charging cable into the UMEIJA Magnetic Wireless Charger.
2. **Connect to Power Adapter:** Connect the other end of the USB-C cable to a compatible power adapter. For optimal 15W fast charging, an 18W, 20W, or higher power adapter (not included) is strongly recommended.
3. **Power On:** Plug the power adapter into a wall outlet. The charger is now ready for use.

For Faster Wireless Charging:



A Phone Supports
Wireless Charge



Note: Without adapter
Recommended $\geq 18w$



360°
Strong Magnetic Suction

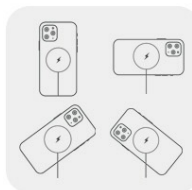


Figure 3.1: Proper connection for faster wireless charging. Note: A power adapter of 18W or higher is recommended.

4. OPERATING INSTRUCTIONS

1. **Place Device:** Gently place your MagSafe-compatible iPhone (iPhone 16/15/14/13/12 series) or AirPods (2/3/Pro) onto the center of the charging pad. The charger's magnet will automatically align with your device for optimal charging.
2. **Charging Indicator:**
 - **Standby (9V input):** Green breathing light turns on for 3 seconds, then turns off.
 - **Normal Charging:** Green breathing pulse light illuminates for a few seconds, then turns off automatically.

- **Foreign Object Detection (FOD):** Green light flashes rapidly and continuously, and charging stops.

3. **Charging Flexibility:** The strong magnetic force allows you to hold and use your phone while it charges, and rotate it 360 degrees without interrupting the connection.



Free to Turn Around without cord being on the way



Figure 4.1: The charger allows for 360-degree rotation and use while charging.



Figure 4.2: The portable design allows for convenient charging in various settings.

5. COMPATIBILITY

The UMEIJA Magnetic Wireless Charger is designed for broad compatibility with Apple devices:

- **iPhone Models:**

- iPhone 16 Series (Pro Max, Pro, 16, Plus)
- iPhone 15 Series (Pro Max, Pro, 15, Plus)
- iPhone 14 Series (Pro Max, Pro, 14, Plus)
- iPhone 13 Series (Pro Max, Pro, 13, Mini)
- iPhone 12 Series (Pro Max, Pro, 12, Mini)
- iPhone 8 and above models also support magnetic charging, but require a MagSafe protective case for stronger magnetization.

- **AirPods Models:**

- AirPods Pro (2nd generation)
- AirPods 3
- AirPods 2 (charging case must support wireless charging)

Important Note: For optimal magnetic adsorption and charging performance, especially with iPhone 8 and above models, it is highly recommended to use a MagSafe-compatible protective case. Regular protective cases may weaken magnetic adsorption.

Universal Compatibility

The infographic is divided into two main columns. The left column lists iPhone series with their compatible power output (15W or 5W). The right column lists AirPods models and iPhone cases with their compatibility status. At the bottom right, a large image shows a blue circular charging pad with a lightning bolt icon and a blue cable.

| Power Output | Device Series | Compatible Models | Notes |
|--------------------------|---------------|---|---|
| 15W | iPhone | 16 Series | For 16, For 16 Plus, For 16 Pro, For 16 Pro max |
| 15W | iPhone | 15 Series | For 15, For 15 Plus, For 15 Pro, For 15 Pro max |
| 15W | iPhone | 14 Series | For 14, For 14 Plus, For 14 Pro, For 14 Pro max |
| 15W | iPhone | 13 Series | For 13, For 13 Plus, For 13 Pro, For 13 Pro max |
| 15W | iPhone | 12 Series | For 12, For 12 Plus, For 12 Pro, For 12 Pro max |
| 15W | iPhone | 8-11 Series | (Must match MagSafe Case) |
| 5W | AirPods | AirPods 3, AirPods Pro/ Pro 2 | |
| iPhone Case with MagSafe | | 1.No case (✓), 2.MagSafe case (✓), 3.Regular case (✗) | |

Figure 5.1: Universal compatibility with various iPhone and AirPods models.

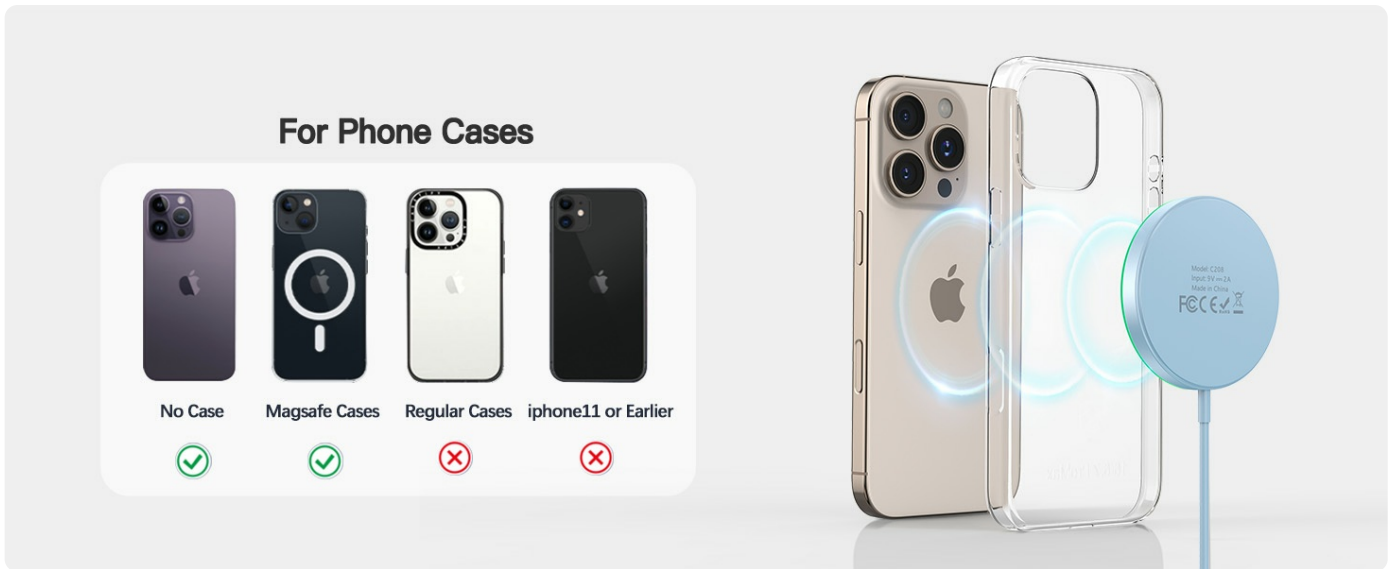


Figure 5.2: Recommended phone case types for optimal magnetic charging.

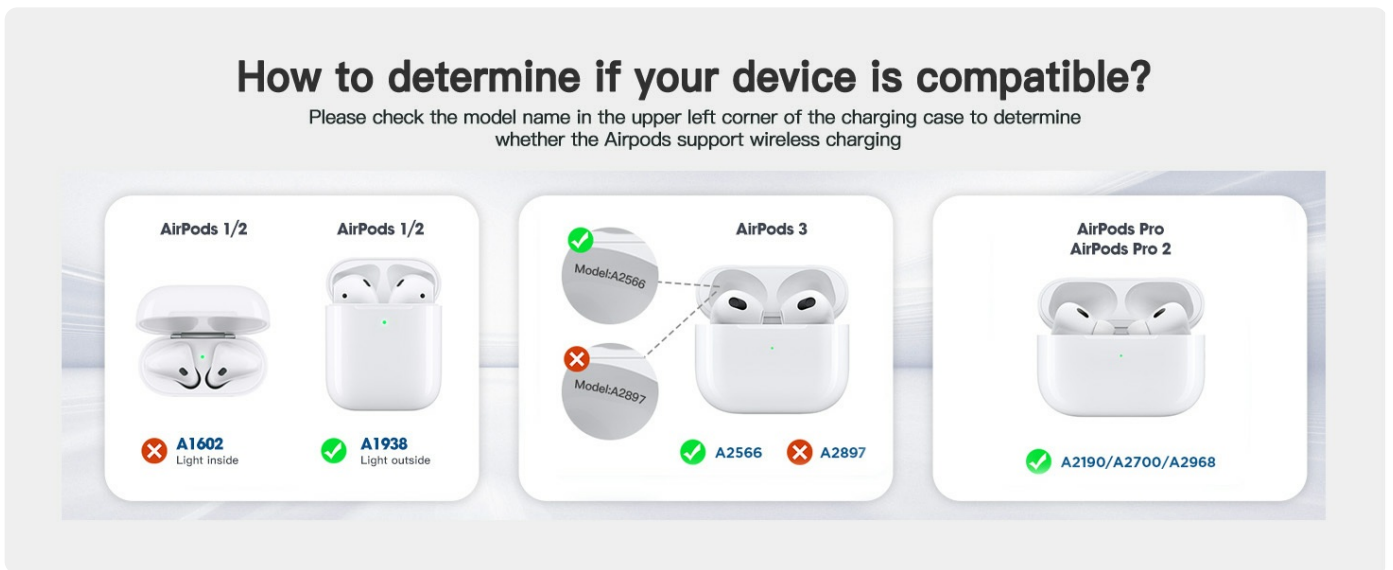


Figure 5.3: How to verify AirPods compatibility for wireless charging.

6. MAINTENANCE

- Keep the charging pad clean and free of dust and debris. Use a soft, dry cloth for cleaning.
- Avoid exposing the charger to extreme temperatures, humidity, or liquids.
- Do not disassemble or attempt to repair the charger yourself.
- Store the charger in a cool, dry place when not in use.

7. TROUBLESHOOTING

| Problem | Possible Cause | Solution |
|---------|----------------|----------|
|---------|----------------|----------|

| Problem | Possible Cause | Solution |
|---|---|--|
| Device not charging or charging slowly. | <ul style="list-style-type: none"> ◦ Improper alignment of device on the pad. ◦ Power adapter is not 18W/20W or higher. ◦ Non-MagSafe case is interfering with magnetic connection. ◦ Foreign object detected on the charging pad. ◦ Device is not wireless charging compatible. | <ul style="list-style-type: none"> ◦ Ensure device is centered on the charging pad. ◦ Use an 18W, 20W, or higher power adapter. ◦ Remove the non-MagSafe case or use a MagSafe-compatible case. ◦ Remove any metal objects or foreign materials from the charging pad. ◦ Verify your device supports wireless charging. |
| Green LED flashes rapidly. | Foreign object detected (FOD) or potential issue. | Remove the device and check for any foreign objects (e.g., coins, keys, credit cards) on the charging pad. If the issue persists, try a different power adapter or contact support. |
| Charger or device feels warm during charging. | Normal operation, but excessive heat can indicate an issue. | Slight warmth is normal. If it becomes excessively hot, remove the device immediately. Ensure proper ventilation and that no foreign objects are present. The charger has built-in overheating protection (Temp° Guard). |

8. SPECIFICATIONS

| Feature | Detail |
|-------------------------|--------------------------------|
| Model Number | c208-03 |
| Brand | UMEIJA |
| Connectivity Technology | Wireless, Magnetic, USB |
| Connector Type | USB Type C |
| Input Voltage | 120 Volts |
| Amperage | 2 Amps |
| Item Weight | 2.08 ounces (approx. 59 grams) |

| Feature | Detail |
|--------------------|-----------------------------|
| Package Dimensions | 4.17 x 4.09 x 0.75 inches |
| Color | Blue |
| Manufacturer | Nanjing Xiaoduo Trading Co. |
| Country of Origin | China |

9. SAFETY INFORMATION

To ensure safe operation and prevent damage to the product or injury to yourself, please observe the following safety guidelines:

- This wireless charger is made of fireproof ABS material for enhanced safety and heat dissipation.
- Do not expose the charger to water or other liquids.
- Avoid placing metal objects, credit cards, or other foreign materials between the charging pad and your device, as this may interfere with charging and trigger foreign object detection.
- Do not use the charger in extremely hot or cold environments.
- Keep the charger out of reach of children and pets.
- Unplug the charger during lightning storms or when unused for long periods.
- The product is certified with CE, UL, FCC, and RoHS for safety compliance.

10. WARRANTY AND SUPPORT

UMEIJA is committed to providing reliable products and a good shopping experience. This product comes with a lifetime warranty. If you encounter any problems while using the magnetic wireless charger, please do not hesitate to contact our professional customer support team. We are dedicated to providing a solution for you.

For support, please refer to the contact information provided with your product packaging or visit the official UMEIJA store on Amazon: [UMEIJA Store](#).

