

Aoodor 8'W x 8'H

Aoodor Cordless Solar Fabric Roller Shade User Manual

Model: 8'W x 8'H

Brand: Aoodor

1. INTRODUCTION

This manual provides instructions for the proper installation, operation, and maintenance of your Aoodor Cordless Solar Fabric Roller Shade. Please read this manual thoroughly before installation and use to ensure safe and efficient operation.

The Aoodor Cordless Solar Fabric Roller Shade is designed for outdoor use, offering 95% UV protection while maintaining a 5% openness for visibility. Its cordless design enhances safety, and the manual crank mechanism allows for easy adjustment.

2. SAFETY INFORMATION

- Always follow local building codes and safety regulations during installation.
- Ensure all mounting hardware is securely fastened to a stable structure.
- Keep children and pets away from the shade during operation to prevent entanglement, despite its cordless design.
- Do not attempt to modify the shade or its components, as this may void the warranty and create safety hazards.
- In strong winds, it is recommended to retract the shade to prevent damage.

3. PACKAGE CONTENTS

Verify that all components are present before beginning installation:

- Solar Fabric Roller Shade

- Mounting Brackets (Left and Right)
- Manual Crank Handle
- Windproof Balls and Bases
- Installation Hardware (Screws, Anchors)
- Flexible Rod (for fabric insertion)
- Aluminum Tube (pre-installed in shade)

4. SETUP AND INSTALLATION

This section details the steps for installing your Aoodor roller shade. Refer to the diagrams and video for visual guidance.

4.1. Prepare the Shade

1. Unroll the shade slightly to access the bottom hem.
2. Insert the flexible rod into the bottom hem of the shade. Ensure it is fully seated across the entire width.
3. Insert the aluminum tube into the top pocket of the shade.
4. Attach the end caps to the aluminum tube, ensuring they are secure.

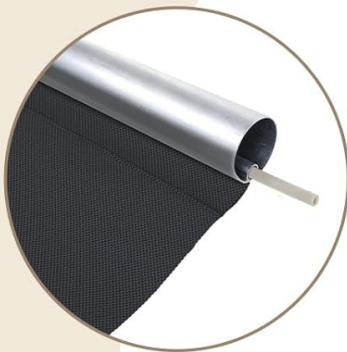
DETAILS



Windproof Balls
Prevent roller shade from shaking



Manual Crank
Control the shade up and down



Aluminum Tube
Corrosion resistance and stability



Image: Detailed view of the shade's components, including the windproof balls, manual crank, and aluminum tube for stability.

4.2. Choose Installation Method

Your shade supports two installation methods: Wall Mounted or Top Mounted.

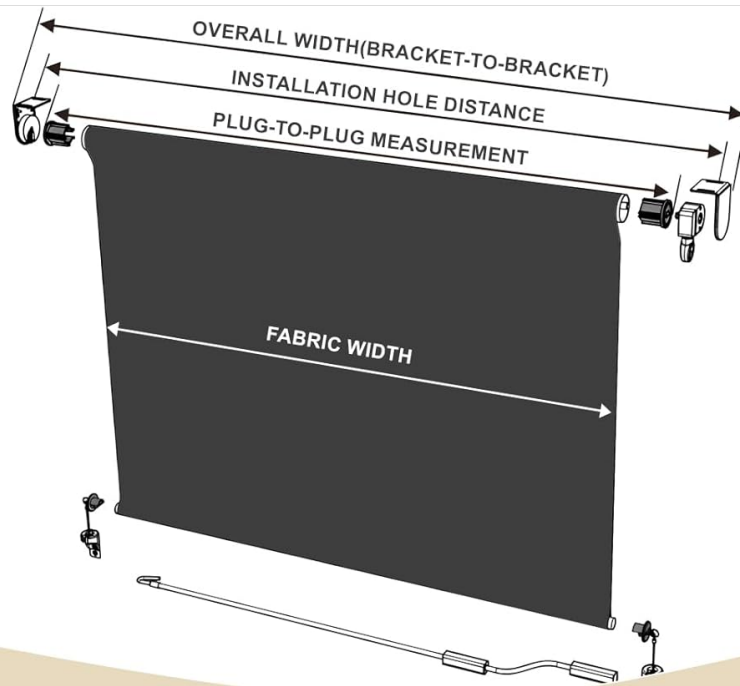
INSTALLATION



Image: Illustration of the two available installation methods: Wall Mounted and Top Mounted.

4.3. Mount the Brackets

1. Mark the desired positions for the mounting brackets. Ensure they are level and spaced correctly according to the shade's width. Refer to the product dimensions table for precise measurements.
2. Securely fasten the mounting brackets to the wall or ceiling using appropriate screws and anchors for your surface type.



| SIZE (Feet) | FABRIC WIDTH (inch) | PLUG-TO-PLUG MEASUREMENT (inch) | INSTALLATION HOLE DISTANCE (inch) | OVERALL WIDTH (BRACKET-TO-BRACKET) (inch) |
|----------------|------------------------|---------------------------------------|---|---|
| 4' X 8' | 45.47" | 46.06" | 46.45" | 48.23" |
| 5' X 8' | 59.65" | 60.23" | 60.63" | 62.40" |
| 6' X 8' | 71.85" | 72.44" | 72.83" | 74.60" |
| 7' X 8' | 83.66" | 84.25" | 84.64" | 86.41" |
| 8' X 8' | 89.17" | 89.76" | 90.16" | 91.93" |

- The data is measured manually, please allow a slight error.

Image: Product dimension table providing measurements for different shade sizes, including fabric width and installation hole distance.

4.4. Install the Shade

1. Carefully lift the assembled roller shade and insert it into the installed mounting brackets. Ensure it clicks securely into place.
2. Attach the manual crank handle to the designated mechanism on one side of the shade.

4.5. Install Windproof Balls

1. Position the windproof ball bases on the lower part of your structure, aligning them with the bottom of the shade.
2. Secure the bases with screws.
3. Attach the windproof balls to the bases, ensuring the shade's bottom bar can be secured to prevent swaying in the wind.

4.6. Installation Video Guide

For a visual step-by-step guide, please watch the official installation video:

Your browser does not support the video tag.

Video: Official Aoodor Cordless Solar Fabric Roller Shade Installation Guide. This video demonstrates the complete assembly and mounting process.

5. OPERATING INSTRUCTIONS

The Aoodor Cordless Solar Fabric Roller Shade features a simple manual crank operation.

1. To lower the shade: Turn the manual crank handle clockwise until the shade reaches the desired position.
2. To raise the shade: Turn the manual crank handle counter-clockwise until the shade is fully retracted or at the desired height.
3. Secure the bottom of the shade using the windproof balls and bases to prevent movement in breezy conditions.

Cordless Design

Provide a safe environment for children and pets



Image: The cordless design of the Aoodor roller shade, emphasizing safety and ease of use.

6. MAINTENANCE

Regular maintenance will prolong the life and appearance of your roller shade.

- **Cleaning:** Wipe the fabric with a damp cloth and mild soap. Do not use harsh chemicals or abrasive cleaners. Allow the shade to air dry completely before retracting.

- **Inspection:** Periodically check all mounting hardware for tightness. Ensure the crank mechanism operates smoothly.
- **Weather Protection:** Retract the shade during severe weather conditions, such as heavy rain, strong winds, or snow, to prevent damage.



Image: Detail of the 5% openness solar fabric, showcasing its durability and protective qualities.

7. TROUBLESHOOTING

If you encounter issues with your roller shade, refer to the following common problems and solutions:

| Problem | Possible Cause | Solution |
|--|--|---|
| Shade does not roll up or down smoothly. | Obstruction in the mechanism; fabric misaligned. | Check for any obstructions. Ensure the fabric is properly aligned on the roller. |
| Shade rolls up unevenly. | Installation not perfectly level; fabric tension uneven. | Verify that mounting brackets are level. Gently guide the fabric to re-align as it rolls. |

| Problem | Possible Cause | Solution |
|--|--|---|
| Shade sways excessively in light wind. | Windproof balls not secured or improperly installed. | Ensure windproof balls are properly attached to the bases and the shade's bottom bar. |

8. SPECIFICATIONS

- **Material:** Solar Fabric (30% polyester, 70% PVC)
- **Color:** Dark Grey
- **Size:** 8' x 8' (Width x Height)
- **Operation Mode:** Manual Crank
- **UV Protection:** 95%
- **Openness:** 5%
- **Required Assembly:** Yes

9. WARRANTY AND SUPPORT

Aoodor products are designed for durability and performance. For specific warranty details, please refer to the product packaging or contact Aoodor customer support.

If you require assistance with installation, operation, or troubleshooting that is not covered in this manual, please contact Aoodor customer support through the retailer where the product was purchased or visit the official Aoodor website.