



Manuals.plus /

› Lxlu /

› Lxlu RF001 Electric Smart Heated Bidet Toilet Seat User Manual

Lxlu RF001

Lxlu RF001 Electric Smart Heated Bidet Toilet Seat User Manual

Model: RF001 | Brand: Lxlu

1. INTRODUCTION

This manual provides essential information for the safe and efficient operation of your Lxlu RF001 Electric Smart Heated Bidet Toilet Seat. Please read all instructions carefully before installation and use. Keep this manual for future reference.

2. IMPORTANT SAFETY PRECAUTIONS

To reduce the risk of fire, electric shock, or injury, adhere to the following:

- Ensure the power outlet is properly grounded.
- Do not immerse the unit in water or spray water directly onto electrical components.
- Unplug the unit before cleaning or maintenance.
- Do not allow children to operate the bidet without supervision.
- Avoid using abrasive cleaners or harsh chemicals on the unit.
- If the power cord is damaged, it must be replaced by the manufacturer or a qualified service agent.

Nov 20 - Dec 1

**Black Friday
Cyber Monday**

UP TO 90% OFF



BFCM Special: Upgrade Your Bathroom with a Smart Bidet Seat!

Image: Diagram illustrating various safety warnings and precautions for bidet toilet seat usage, including electrical safety and proper cleaning methods.

3. PACKAGE CONTENTS

Verify that all components are present before beginning installation:

- Bidet Toilet Seat (RF001)
- Wireless Remote Control
- Fixed Plate
- Tee Connector (G1/2")
- Water Inlet Hose
- Expansion Nuts
- Connecting Bolts
- Adjustment Plastic Seat
- Gasket
- Instruction Manual
- Certificate of Conformity

ECO Smart Mode

AI-driven sensors optimize water heating and seat warmth, cutting 65% stand by energy while maintaining comfort. Low-power ceramic heating and auto-brightness reduce annual consumption by 40%. Carbon-track LED displays eco-impact.



Image: A visual representation of all included components: bidet seat, remote control, fixed plate, tee connector, water inlet hose, expansion nuts, connecting bolts, adjustment plastic seat, gasket, instruction manual, and certificate.

4. PRODUCT FEATURES

- **Heated Ergonomic Seat:** Adjustable warmth for comfort in all seasons.
- **Instant Warm Water:** Adjustable temperature control with various spray options.
- **Warm Air Drying:** Built-in air dryer to reduce toilet paper usage.
- **Versatile Nozzle:** Features Rear/Move Wash, Front/Feminine Wash, and Self-Cleaning.
- **Adjustable Water Pressure:** Customize cleansing intensity.
- **Dual Control Options:** Wireless Remote Control and Side Control Knob for convenience.
- **Smart Seat Sensor:** Prevents misoperation by detecting user presence.
- **IPX4 Waterproof:** Designed to withstand water splashes.
- **Soft Close Lid & Seat:** Prevents slamming and reduces noise.
- **Night Light:** Soft-glow illumination for safe nighttime use.
- **ECO Smart Mode:** AI-driven sensors optimize heating and warmth, reducing energy consumption.



Image: Illustrates heated seat, instant warm water, and warm air drying features.



Smart Seat Sensor

Built-in seat sensor to prevent misoperation during use.



IPX4 Waterproof

No need to worry about waters plashing on the machine body.



Soft Close Lid & Seat

The lid and seat would fall slowly without making any loud and abrupt slamming.



Nightlight

Provides soft illumination to ensure safe use at night without disrupting the sleep cycle.

Image: Highlights smart features including a seat sensor, IPX4 waterproofing, soft-close lid, and nightlight function.

5. INSTALLATION AND SETUP

Follow these steps for proper installation. No specialized plumbing skills are required.

1. **Confirm Toilet Size:** Ensure your toilet is an elongated type and matches the dimensions provided in the diagram. A power socket is required nearby.

PLEASE CONFIRM YOUR TOILET SIZE

Before Placing Order !



Image: Diagram showing measurements for elongated and round toilets, indicating compatibility for elongated models and the need for a power socket.

- 2. Remove Old Toilet Seat:** Carefully remove your existing toilet seat and lid.
- 3. Install Fixing Plate:** Place the installation template on the ceramic and secure the fixed plate using the connecting bolts and expansion nuts.

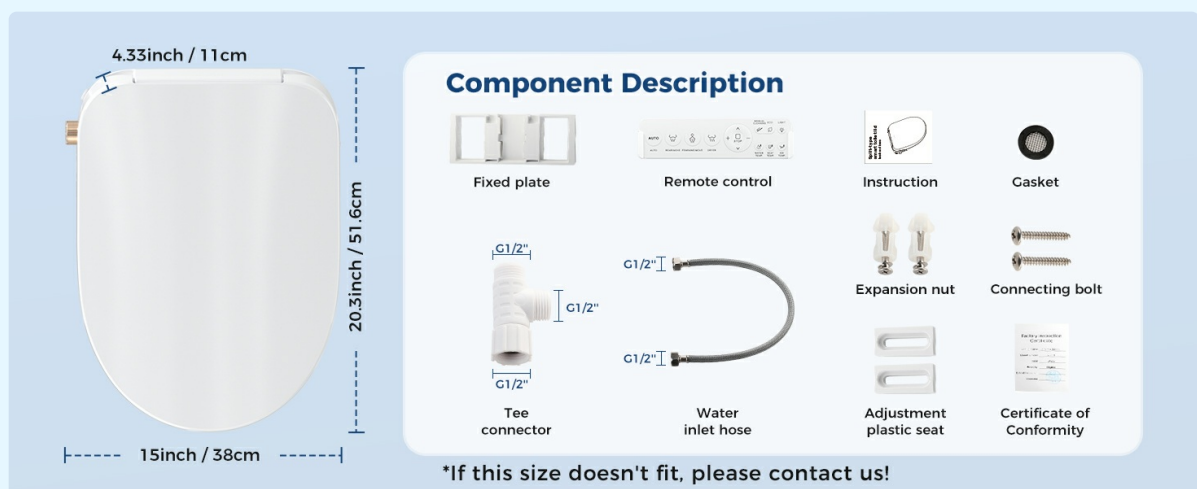


Image: A four-step diagram illustrating the simple assembly process: installing the fixing plate, accessories, assembling the smart toilet seat, and connecting the stainless steel pipe.

- 4. Attach Bidet Seat:** Slide the bidet toilet seat onto the fixed plate until it clicks into place.

5. Connect Water Supply:

- Close the toilet's water supply valve.
- Disconnect the existing water supply hose from the toilet tank.
- Install the T-connector to the toilet tank's water inlet.
- Connect the water inlet hose from the bidet seat to the T-connector.
- Open the water supply valve and check for leaks.

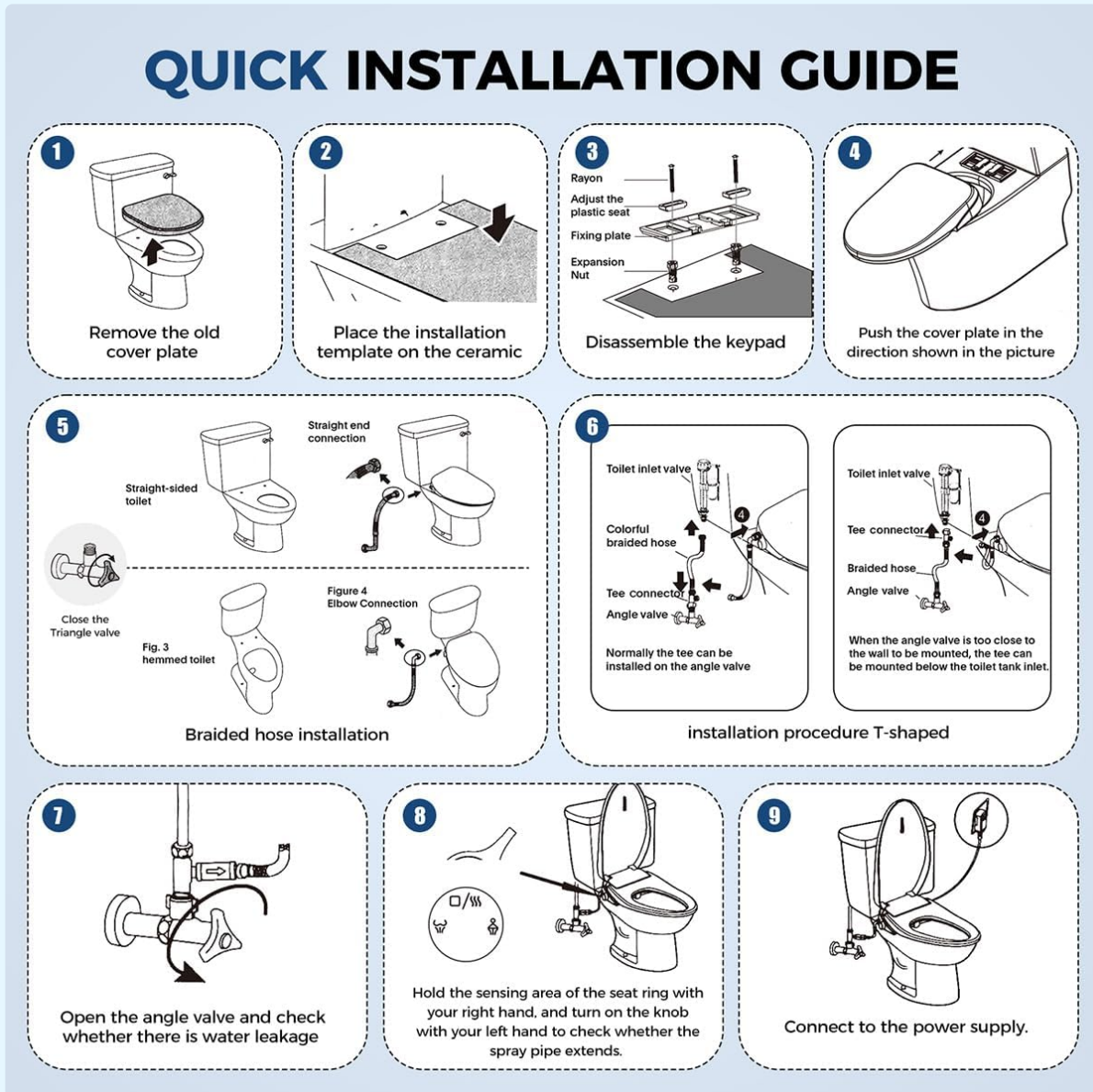


Image: A nine-step visual guide detailing the quick installation process, from removing the old cover plate to connecting the power supply.

6. **Connect Power:** Plug the bidet seat into a grounded electrical outlet.

Installation Video Tutorial:

Your browser does not support the video tag.

Video: A detailed tutorial demonstrating the disassembly and installation process of the smart toilet seat cover.

6. OPERATING INSTRUCTIONS

Your Lxlu RF001 bidet seat offers multiple functions for personalized hygiene. Control is available via the wireless remote or the side control knob.

6.1. Wireless Remote Control

The remote allows comprehensive control over all bidet functions:

- **AUTO:** Initiates a standard wash and dry cycle.
- **REAR/MOVE WASH:** Activates posterior cleansing.
- **FEMININE/MOVE WASH:** Activates feminine cleansing.
- **DRYER:** Activates the warm air dryer.
- **+/-:** Adjusts water pressure.
- **POSITION:** Adjusts nozzle position.
- **WATER TEMP:** Adjusts water temperature (4 levels).
- **SEAT TEMP:** Adjusts seat temperature (4 levels).
- **AIR TEMP:** Adjusts dryer air temperature (4 levels).
- **LIGHT:** Toggles the night light.
- **ECO:** Activates energy-saving mode.
- **CLEAN:** Initiates self-cleaning of the nozzle.
- **STOP:** Halts any active function.



Image: Detailed layout of the wireless remote control, showing buttons for auto, wash modes, dryer, temperature adjustments for water, seat, and air, light, eco, clean, and stop functions.

6.2. Side Control Knob

For quick adjustments, use the intuitive side control knob:

- Twist or press the knob to activate washing, air dry, and adjust water/air temperature.
- Specific settings for Rear Cleansing and Female Cleansing are available.

WARM AIR DRYER

A gentle and thorough drying process after each use.



Image: Close-up of the bidet seat's side control knob, indicating functions for water temperature, seat temperature, and wash/dry activation.

6.3. Key Functions in Use

- **Heated Seat:** Enjoy adjustable seat temperatures (e.g., 89.6°F to 100.4°F).



Image: Illustrates the adjustable heated seat function with four temperature levels.

- **Instant Warm Water:** Unlimited fresh warm water with 4 adjustable temperature levels (e.g., 96.8°F to 103.2°F).



Image: Shows the instant warm water feature with four adjustable temperature levels.

- **Warm Air Dryer:** Gentle and thorough drying process with adjustable air temperature (e.g., 113°F to 131°F).



Image: Displays the warm air dryer function with adjustable temperature settings.

- **Night Light:** Provides soft illumination for safe navigation in the dark.

WHY OUR BIDET IS BETTER ?

OURS

- ✓ Comes complete with all necessary hardware and a simple installation diagram. No plumber required. installation done in 30 minutes flat.
- ✓ Crafted from polypropylene, ensuring durability, health safety, and environmental friendliness.
- ✓ Silent Mode: Whisper-quiet for a peaceful experience, ideal for mornings or nights.

OTHERS

- ✗ Incomplete tools and accessories provided requiring additional expenses to complete installation.
- ✗ Made from ordinary plastic, prone to breaking and posing potential hazards.
- ✗ May compromise privacy and disturb your family at night.



Image: Shows the bidet seat's night light illuminating the toilet bowl in a dark bathroom setting.

- **ECO Smart Mode:** AI-driven sensors optimize water heating and seat warmth, cutting standby energy by 65% and reducing annual consumption by 40%.

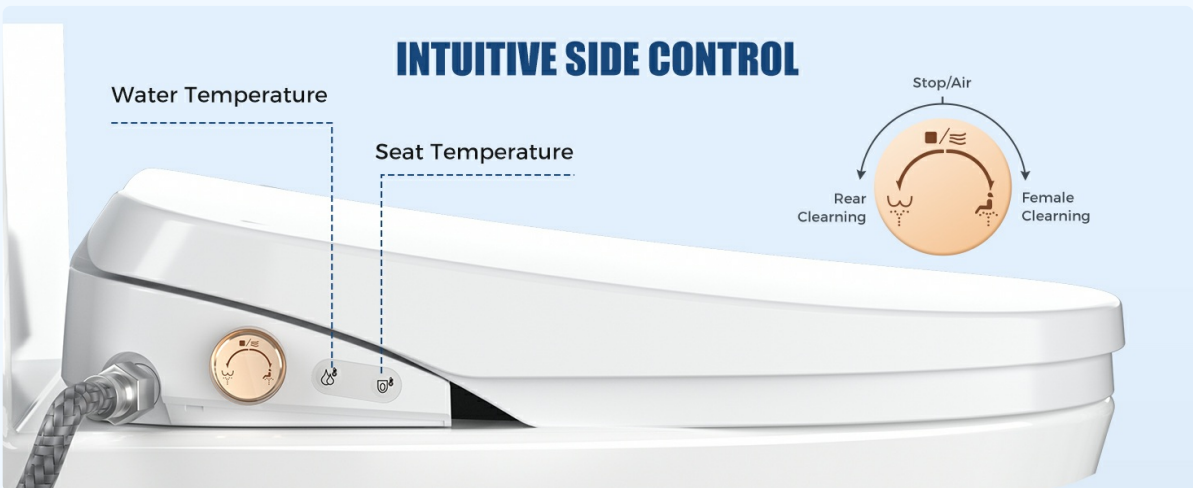


Image: Illustrates the ECO Smart Mode feature, emphasizing energy savings through optimized heating.

Operation Videos:

Your browser does not support the video tag.

Video: Demonstrates the electric heated toilet seat with instant warm water features and controls.

Your browser does not support the video tag.

Video: Shows the bidet toilet seat's instant warm water and various functions in operation.

Your browser does not support the video tag.

7. MAINTENANCE

- **Nozzle Self-Cleaning:** The retractable nozzles automatically clean themselves before and after each use. You can also manually activate the clean function via the remote.
- **General Cleaning:** Wipe the exterior of the bidet seat with a soft, damp cloth and mild detergent. Avoid harsh chemicals or abrasive materials.
- **Descaling:** Periodically descaling the nozzle and water pathways if hard water is an issue. Refer to the full instruction manual for detailed descaling procedures.

8. TROUBLESHOOTING

If you encounter issues, try the following common solutions:

- **No Power:** Check if the unit is properly plugged into a grounded outlet. Ensure the circuit breaker is not tripped.
- **No Water Spray:** Verify the water supply valve is fully open. Check if the seat sensor is activated (you must be seated for the spray to operate).
- **Water Temperature Issues:** Adjust the water temperature settings on the remote. Allow a few moments for the water to heat up.
- **Remote Not Responding:** Replace the remote control batteries. Ensure there are no obstructions between the remote and the bidet seat.
- **Leaks:** Check all water connections for tightness. Ensure gaskets are properly seated.

For persistent problems, please refer to the comprehensive troubleshooting section in the full instruction manual or contact customer support.

9. SPECIFICATIONS

Feature	Detail
Model	RF001
Brand	Lxlu
Color	White
Material	Polypropylene (PP)
Shape	Elongated (V-Shape)
Power Voltage	AC110V ~ 50Hz
Rated Power	1250W
Pressure Range	0.1MPa - 0.75MPa
Waterproof Grade	IPX4
Item Weight	4.45 Kilograms (9.78 pounds)
Product Dimensions	20.3"L x 15"W (Elongated)

10. WARRANTY AND SUPPORT

For warranty information, product registration, or technical support, please refer to the documentation included in your product packaging or visit the official Lxlu website. Keep your purchase receipt as proof of purchase.
Manufacturer: Foshan Shunde Xinhuida Electronic Co Ltd