

TOTAL TIWLI20401

TOTAL TIWLI20401 Cordless Impact Wrench User Manual

Model: TIWLI20401

1. INTRODUCTION

This manual provides essential information for the safe and effective operation, maintenance, and troubleshooting of your TOTAL TIWLI20401 Cordless Impact Wrench. Please read this manual thoroughly before using the tool and retain it for future reference.

The TOTAL TIWLI20401 is a powerful and efficient cordless impact wrench designed for fastening and loosening applications. It features a brushless motor for enhanced durability and performance, a 1/2 inch square drive, and an integrated LED work light.

2. SAFETY INSTRUCTIONS

Always observe basic safety precautions to reduce the risk of fire, electric shock, and personal injury when operating power tools.

- **Work Area Safety:** Keep the work area clean and well-lit. Cluttered or dark areas invite accidents. Do not operate power tools in explosive atmospheres, such as in the presence of flammable liquids, gases, or dust.
- **Electrical Safety:** Avoid body contact with earthed or grounded surfaces. Do not expose power tools to rain or wet conditions.
- **Personal Safety:** Always wear eye protection. Use hearing protection when operating the tool for extended periods. Dress properly; avoid loose clothing or jewelry. Secure long hair.
- **Tool Use and Care:** Do not force the power tool. Use the correct power tool for your application. Disconnect the battery pack from the power tool before making any adjustments, changing accessories, or storing power tools.
- **Battery Pack Safety:** Use only the specified battery pack for this tool. Do not incinerate the battery pack even if it is severely damaged.

3. COMPONENTS AND FEATURES

Familiarize yourself with the key components and features of your TOTAL TIWLI20401 Cordless Impact Wrench.



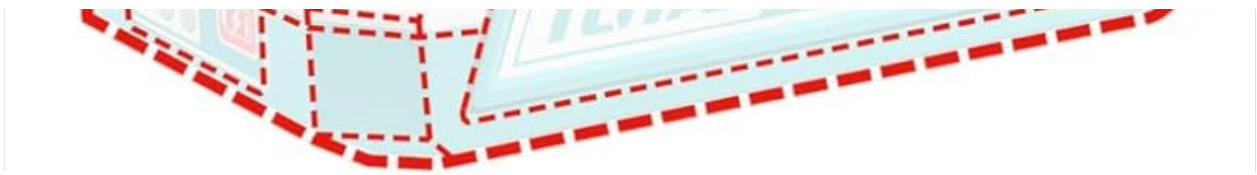


Figure 1: Main view of the TOTAL TIWLI20401 Cordless Impact Wrench, highlighting its ergonomic design and brushless motor branding.

- **Brushless Motor:** Provides higher efficiency, longer durability, and reduced maintenance compared to brushed motors.
- **1/2 Inch Square Drive:** Ensures a secure and stable connection for various socket sizes.
- **Variable Speed Trigger:** Allows for precise control over the rotation speed, adapting to different application requirements.
- **Forward/Reverse Switch:** Easily change the direction of rotation for fastening and loosening tasks.
- **Integrated LED Work Light:** Illuminates the work area for improved visibility in dimly lit conditions.
- **High Torque Output:** Offers a fastening torque of 400Nm and a nut-busting torque of 550Nm for demanding applications.



Figure 2: The impact wrench shown with common socket sizes (17mm, 19mm, 21mm) and its packaging. Note that the battery

and charger are sold separately.

4. SETUP

4.1. Battery Installation (Battery and Charger Sold Separately)

1. Ensure the battery pack is fully charged before use.
2. Align the battery pack with the battery port at the base of the impact wrench.
3. Slide the battery pack into the port until it clicks securely into place.
4. To remove, press the battery release button (if present) and slide the battery pack out.

4.2. Socket Attachment

1. Ensure the tool is switched off and the battery is removed before attaching or removing sockets.
2. Select the appropriate 1/2 inch square drive impact socket for your application.
3. Push the socket firmly onto the square drive anvil until it locks into place.
4. To remove, pull the socket off the anvil. Some sockets may require pulling back a retaining ring or pin.

5. OPERATING INSTRUCTIONS

5.1. Powering On/Off

The tool is powered on by pressing the variable speed trigger and powered off by releasing it.

5.2. Selecting Rotation Direction (Forward/Reverse)

The forward/reverse switch is located above the trigger. Push the switch to the left for forward rotation (fastening) and to the right for reverse rotation (loosening). Ensure the switch is in the center position to lock the trigger and prevent accidental starting.

5.3. Variable Speed Control

The tool's speed is controlled by the pressure applied to the trigger. Pressing the trigger lightly results in lower speed, while pressing it fully increases the speed up to the maximum. This allows for precise control depending on the task.

5.4. Fastening and Loosening

1. Select the correct socket and attach it securely.
2. Set the forward/reverse switch to the desired direction.
3. Place the socket onto the fastener.
4. Gradually press the trigger to start the tool. Apply steady pressure to the tool to prevent kickback.
5. For fastening, tighten until the desired torque is achieved. For loosening, continue until the fastener is free.

Caution: Always ensure the fastener and socket are correctly aligned to prevent damage to both the tool and the fastener.

6. MAINTENANCE

Regular maintenance ensures the longevity and optimal performance of your impact wrench.

- **Cleaning:** Keep the tool's ventilation openings clean to prevent overheating. Use a soft, damp cloth to

clean the housing. Do not use harsh chemicals or abrasive cleaners.

- **Storage:** Store the tool and battery pack in a cool, dry place, away from direct sunlight and moisture. Keep out of reach of children.
- **Battery Care:** If the battery pack is not used for extended periods, charge it periodically to maintain its capacity. Do not store discharged battery packs.
- **Inspection:** Periodically inspect the power tool for any damaged parts, loose screws, or worn components. Have any necessary repairs performed by qualified service personnel.

7. TROUBLESHOOTING

Refer to this section for common issues and their solutions.

Problem	Possible Cause	Solution
Tool does not start.	Battery not charged or improperly installed. Forward/Reverse switch in center (locked) position.	Ensure battery is charged and correctly inserted. Move switch to forward or reverse position.
Insufficient torque.	Low battery charge. Incorrect socket size. Tool not suitable for application.	Recharge battery. Use the correct size impact socket. Verify tool specifications meet job requirements.
Tool overheats.	Prolonged heavy use. Blocked ventilation openings.	Allow tool to cool down. Clean ventilation openings. Reduce load.

If the problem persists after attempting these solutions, contact TOTAL customer support or a qualified service center.

8. SPECIFICATIONS

Feature	Specification
Model Number	TIWLI20401
Manufacturer	TOTAL
Voltage	20 Volts
Fastening Torque	400 Nm
Nut-Busting Torque	550 Nm
No-Load Speed	0-1600 / 0-2300 rpm
Impact Rate	0-2100 / 0-2900 bpm
Drive Size	1/2 inch Square
Item Weight	1.26 Kilograms

Feature	Specification
Package Dimensions	24.2 x 16.8 x 8 cm
Included Components	1 x Total TIWLI20401 20V 400Nm Cordless Impact Wrench (Battery and Charger Sold Separately)

9. WARRANTY AND SUPPORT

For warranty information, service, or technical support, please refer to the warranty card included with your product or visit the official TOTAL website. Keep your purchase receipt as proof of purchase for any warranty claims.

For further assistance, you may contact TOTAL customer service through their official channels.