

Franke 114.0716.348

Franke Kitchen Sink Maris MRG 651-97 User Manual

Model: 114.0716.348 | Brand: Franke

1. INTRODUCTION

This manual provides comprehensive instructions for the installation, operation, maintenance, and troubleshooting of your Franke Kitchen Sink Maris MRG 651-97. Please read this manual thoroughly before installation and use to ensure proper function and longevity of your sink.

The Franke Maris MRG 651-97 is a built-in kitchen sink made of Fraganite, featuring a single and a half bowl design with a practical drainer. Its minimalist design is characterized by clear and simple contours, making it a functional and aesthetic addition to any kitchen.

2. SAFETY INSTRUCTIONS

Always adhere to local building and plumbing codes during installation. Professional installation is recommended. Ensure all water supply lines are shut off before beginning installation. Do not use abrasive cleaners or harsh chemicals on the sink surface, as this may damage the Fraganite material. Always wear appropriate personal protective equipment (PPE) during installation, such as gloves and eye protection.

3. PRODUCT OVERVIEW



Figure 3.1: Top-down view of the Franke Maris MRG 651-97 kitchen sink. This image displays the slate grey Fraganite material,

the large main bowl, the smaller secondary bowl, and the integrated drainer area. Both bowls feature standard drain openings.



Figure 3.2: The Franke Maris MRG 651-97 sink integrated into a contemporary kitchen setting. This view shows the sink installed in a light blue countertop, demonstrating its aesthetic appeal and functional use with a modern faucet, fresh fruit, and kitchenware.

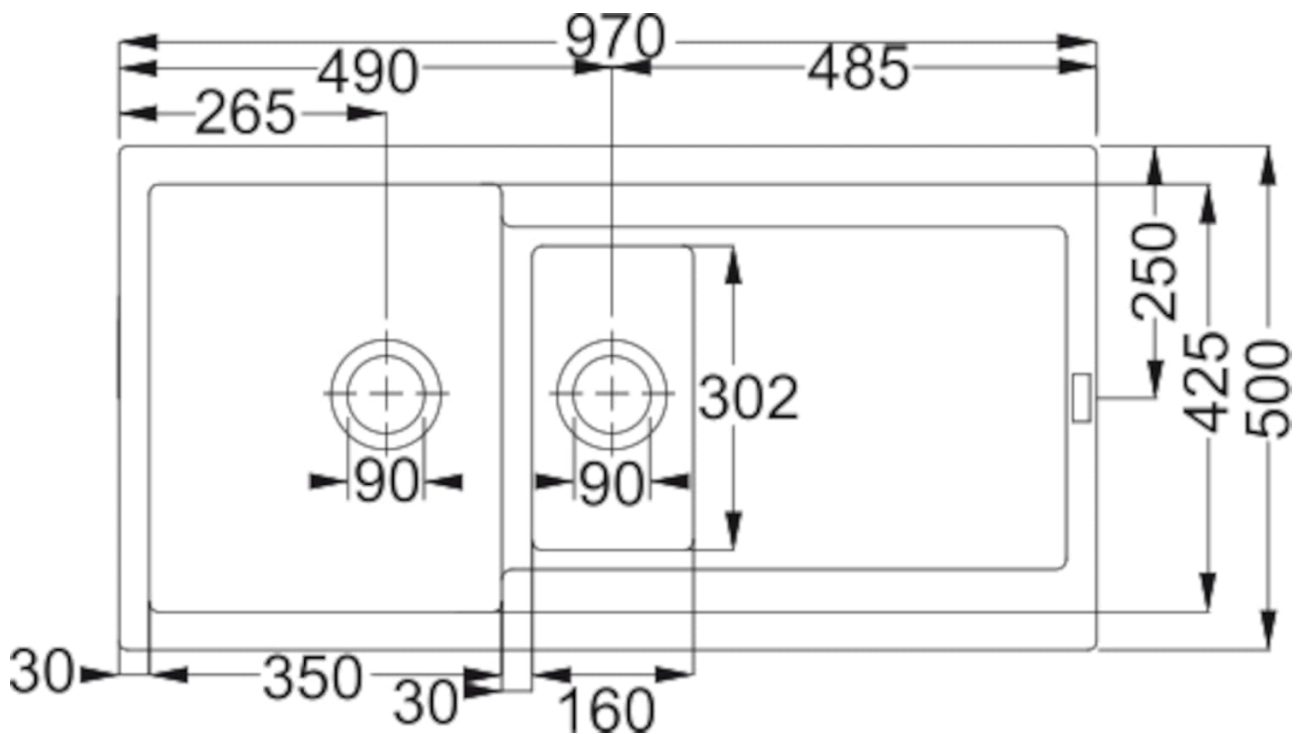


Figure 3.3: Detailed technical drawing of the Franke Maris MRG 651-97 sink, providing precise measurements for installation. This diagram includes overall external dimensions (970 x 500 mm), bowl dimensions (large: 350 x 425 x 200 mm; small: 160 x 302 x 130 mm), and the recommended countertop cut-out size (950 x 480 mm).

4. SETUP AND INSTALLATION

The Franke Maris MRG 651-97 is designed for built-in installation. Ensure you have the necessary tools and follow these guidelines:

4.1. Pre-Installation Checks

- Verify that all components listed in the packaging are present, including the sink, mounting set, and user manual.
- Confirm that the minimum width of the substructure for installation is at least 60 cm.
- Ensure the countertop material is suitable for a built-in sink and can accommodate the required cut-out dimensions.

4.2. Countertop Preparation

Based on the technical drawing (Figure 3.3), the recommended cut-out in the countertop is 950 x 480 mm. Carefully measure and mark the cut-out area on your countertop. Use appropriate cutting tools for your countertop material to create the opening.

4.3. Sink Placement and Sealing

1. Apply a suitable sealant (e.g., silicone) around the edge of the countertop cut-out to create a watertight seal.
2. Carefully lower the sink into the prepared opening. The sink is reversible, allowing the drainer to be positioned on either the left or right side as desired.
3. Secure the sink using the provided mounting set according to the instructions included with the set.

4.4. Plumbing Connections

The sink comes with a 3 1/2" drain and includes a siphon. Connect the drain and siphon to your household plumbing system. Ensure all connections are tight and leak-free. The sink has 2 milled holes for a tap, allowing for flexible faucet placement.

5. OPERATING INSTRUCTIONS

The Franke Maris MRG 651-97 sink is designed for everyday kitchen use. Its dual-bowl configuration offers versatility:

- **Large Bowl:** Ideal for washing larger pots, pans, and dishes.
- **Smaller Half Bowl:** Useful for washing vegetables and fruit, soaking cutlery, or defrosting smaller items.
- **Drainer:** Provides a convenient area for drying dishes or preparing food.

The included stopper for the drain allows you to fill the bowls with water as needed.

6. MAINTENANCE AND CARE

To maintain the pristine appearance and longevity of your Fraganite sink, follow these care instructions:

- **Daily Cleaning:** Clean the sink regularly with warm water, a soft cloth, and a mild dish soap. Rinse thoroughly after cleaning.
- **Stain Removal:** For stubborn stains, use a non-abrasive cream cleaner specifically designed for composite sinks. Apply with a soft sponge, rub gently, and rinse well.
- **Avoid Harsh Chemicals:** Do not use abrasive cleaners, steel wool, scouring pads, strong acids, alkalis, or bleach, as these can damage the Fraganite surface.

- **Heat Resistance:** While Fragranite is highly heat resistant, it is recommended to use a trivet or hot pad for extremely hot pots and pans to prevent thermal shock and potential discoloration over time.
- **Preventing Limescale:** In hard water areas, limescale deposits may form. Regular cleaning helps prevent buildup. For existing limescale, use a diluted vinegar solution or a specialized limescale remover, following the product instructions.

7. TROUBLESHOOTING

Here are some common issues and their potential solutions:

Problem	Possible Cause	Solution
Water not draining properly	Clogged drain or siphon.	Check the drain stopper for debris. Clear any blockages in the drain or siphon. If necessary, disassemble and clean the siphon.
Stains on sink surface	Food residue, hard water deposits, or improper cleaning agents.	Clean with mild dish soap and a soft cloth. For stubborn stains, use a non-abrasive cream cleaner for composite sinks. For limescale, use diluted vinegar.
Sink appears dull or discolored	Buildup of soap scum or mineral deposits; use of harsh chemicals.	Ensure regular cleaning. Avoid abrasive cleaners. A specialized granite composite cleaner can restore luster.

8. SPECIFICATIONS

Feature	Detail
Brand	Franke
Model Number	114.0716.348
Sink Type	Kitchen Sink with Drainer
Material	Fragranite (Granite Composite)
Color	Slate Grey
Mounting Method	Built-in (Undermount)
Number of Bowls	1 1/2 (Single and a Half Bowl)
Number of Drainers	1
Reversible	Yes (Drainer position reversible)
External Dimensions (L x W)	970 x 500 mm (38.19"W x 19.69"D)
Large Bowl Dimensions (L x W x H)	350 x 425 x 200 mm (13.78" x 16.73" x 7.87")
Smaller Bowl Dimensions (L x W x H)	160 x 302 x 130 mm (6.30" x 11.89" x 5.12")
Cut-out in Countertop (L x W)	950 x 480 mm

Feature	Detail
Minimum Substructure Width	60 cm
Drain Size	3 1/2"
Siphon Included	Yes
Number of Tap Holes	2 (milled)
Item Weight	26.8 pounds

9. WARRANTY AND SUPPORT

Your Franke Kitchen Sink Maris MRG 651-97 comes with a manufacturer's warranty. Please refer to the specific warranty documentation provided with your purchase for details on coverage, terms, and conditions. For technical support, spare parts, or warranty claims, please contact Franke customer service or visit the official Franke website. Ensure you have your model number (114.0716.348) and proof of purchase readily available when contacting support.

For further assistance, you may visit the official Franke website: www.franke.com