

IMDL-LS

Generic Ihunt S24 Ultra Phone Case with Tempered Glass Screen Protector IMDL-LS Instruction Manual

Model: IMDL-LS

1. INTRODUCTION

This manual provides instructions for the proper installation, use, and maintenance of your Generic Ihunt S24 Ultra Phone Case, model IMDL-LS, which includes a tempered glass screen protector. This product is designed to offer robust protection and enhanced functionality for your Ihunt S24 Ultra smartphone.

Package Contents:

- 1 x Ihunt S24 Ultra Phone Case (IMDL-LS)
- 1 x Tempered Glass Screen Protector
- 1 x Adhesive Metal Finger Ring Support

2. SETUP AND INSTALLATION

2.1 Installing the Phone Case

1. Ensure your Ihunt S24 Ultra phone is clean and free of dust or debris.
2. Gently insert the phone into the soft silicone frame of the case, starting with one side. The flexible silicone allows for easy installation.
3. Press firmly around the edges to ensure the phone is securely seated within the case. Verify that all ports and buttons align correctly with the case cutouts.

SHOCKPROOF

Soft silicone frame + hard PC backplane, thickened four corners, and a silicone buffer layer in the middle, which is higher than the screen and camera design.



Image: The phone case features a soft silicone frame and hard PC backplane with thickened four corners and a silicone buffer layer for shock absorption. This design ensures the case is higher than the screen and camera for enhanced protection.

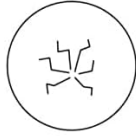
2.2 Installing the Tempered Glass Screen Protector

For optimal adhesion and clarity, perform this installation in a dust-free environment.

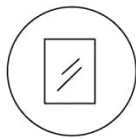
1. **Clean the Screen:** Use the provided cleaning wipes (if included) or a microfiber cloth to thoroughly clean your phone's screen. Ensure there are no dust particles, smudges, or fingerprints.
2. **Align the Protector:** Carefully peel off the protective film from the adhesive side of the tempered glass. Align the screen protector with your phone's screen, paying close attention to the cutouts for the camera and sensors.
3. **Apply:** Once aligned, gently lower the screen protector onto the screen. It will begin to adhere automatically.
4. **Remove Bubbles:** If any air bubbles appear, gently push them towards the edges of the screen using a clean cloth or a squeegee (if provided).



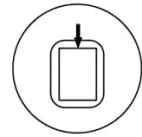
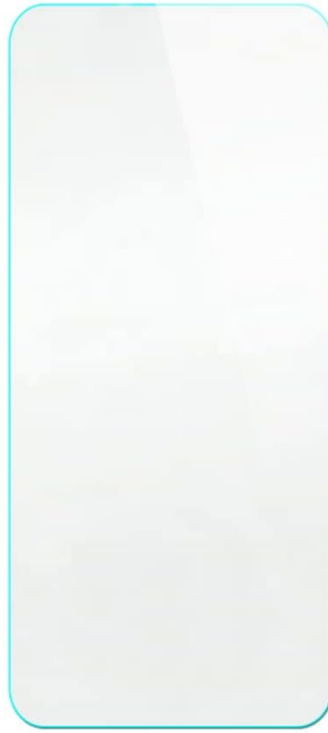
9H High Hardness



Shatterproof



99.9% Super Transparency



Perfect Adhesion



Case Friendly



Anti-fingerprint

Image: This diagram illustrates the key features of the tempered glass screen protector, including its 9H hardness, shatterproof design, high transparency, perfect adhesion, case-friendly fit, and anti-fingerprint properties.



Scratch Proof

Scratch proof screen effectively avoids sharp objects scratching or abrasion



Image: This image visually demonstrates the scratch-proof nature of the screen protector, showing it effectively resisting damage from sharp objects or abrasion.

2.3 Attaching the Ring Support

1. Identify a suitable, flat area on the back of your phone case where you wish to attach the ring support. Ensure the surface is clean and dry.
2. Peel off the protective film from the adhesive backing of the metal finger ring.
3. Carefully place the ring support onto the chosen area of the case. Press firmly for at least 30 seconds to ensure strong adhesion. Allow a few hours for the adhesive to fully cure before heavy use.

3. OPERATING INSTRUCTIONS

3.1 Using the Ring Support

The integrated metal finger ring offers multiple functionalities:

- **Enhanced Grip:** Slide your finger through the ring for a more secure hold on your phone, reducing the risk of accidental drops.

- **Kickstand Function:** Rotate the ring 360 degrees and adjust it to an angle that allows your phone to stand upright on a flat surface, ideal for hands-free viewing.

One-Hand Operation

Touch more spots on the screen

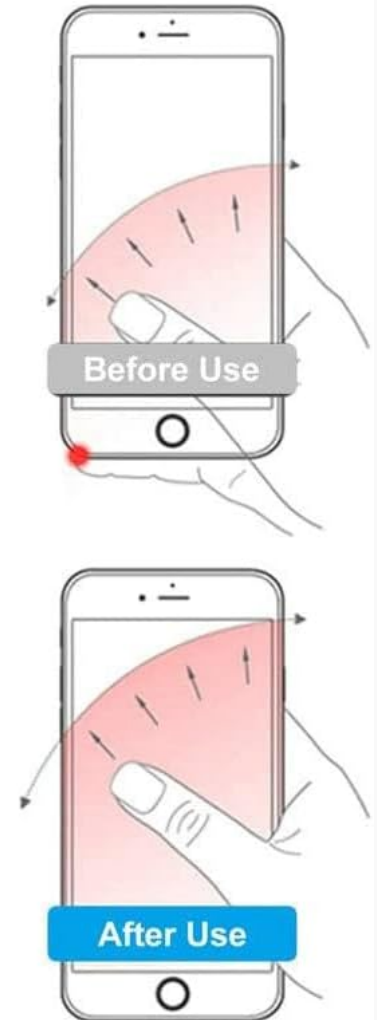
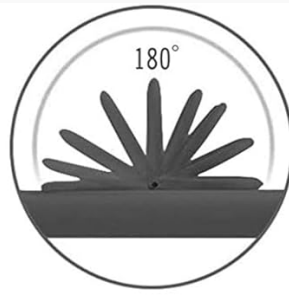


Image: This illustration shows how the finger ring facilitates one-hand operation, allowing users to comfortably reach more areas of the phone screen.

3.2 Magnetic Car Mount Compatibility

The metal finger ring support is designed to be compatible with magnetic car mounts. Simply attach your phone (with the case and ring) to a magnetic car mount for secure in-car navigation or hands-free use.

Note: A magnetic car mount is not included with this product. This case does not support wireless charging due to the metal ring.



SUPPORT MAGNETIC CAR MOUNT

Not include magnetic car mount,
not support wireless charging.

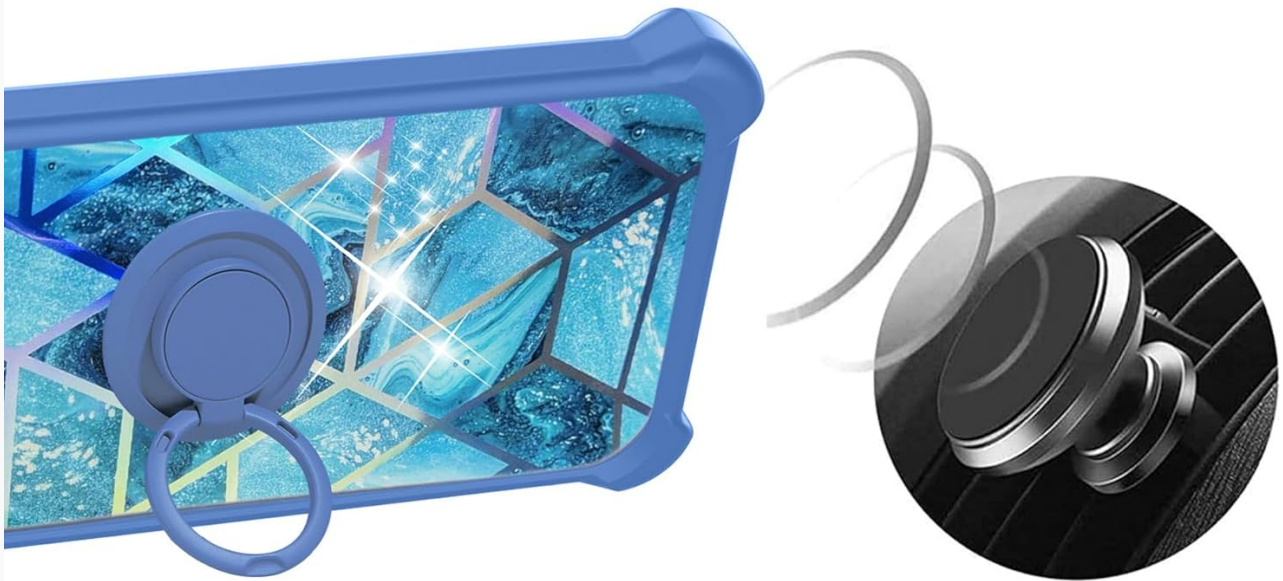


Image: This image displays the phone case with its 360-degree rotating ring support, highlighting its compatibility with magnetic car mounts (car mount not included).

4. MAINTENANCE

4.1 Cleaning the Phone Case

To maintain the appearance and cleanliness of your phone case:

- Remove the phone from the case.
- Wipe the PC hard back panel and soft silicone frame with a damp cloth and mild soap if necessary.
- Avoid using harsh chemicals or abrasive cleaners, as these can damage the material or the colorful reflective light finish.
- Ensure the case is completely dry before reinserting your phone.

IMD laser style

Different angles will produce different color reflection effects

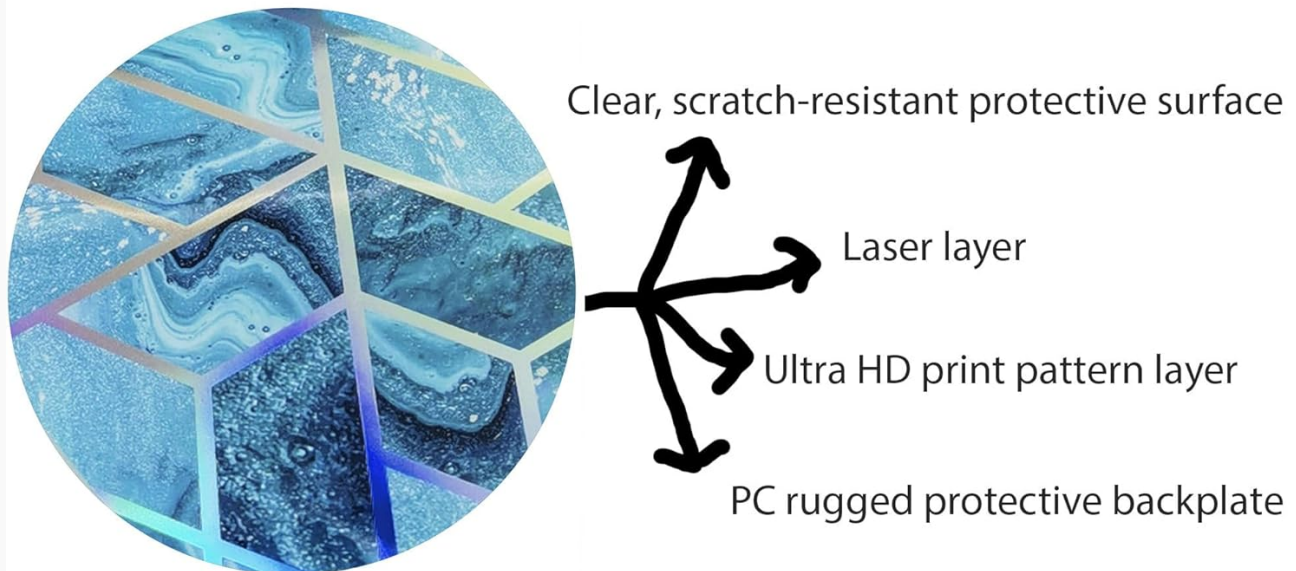


Image: This diagram explains the IMD laser style construction of the case's back panel, showing its four layers: a clear, scratch-resistant protective surface, a special process layer, an ultra HD print pattern layer, and a PC rugged protective backplate. Different angles will produce different color reflection effects.

4.2 Cleaning the Tempered Glass Screen Protector

The screen protector can be cleaned with a soft, lint-free cloth. For stubborn smudges, a screen cleaner spray designed for electronics can be used. Avoid excessive pressure.

5. TROUBLESHOOTING

- **Screen Protector Bubbles:** If bubbles appear after installation, try gently lifting the nearest edge of the protector and slowly re-applying it, pushing the bubble out with a soft cloth. Small bubbles may disappear on their own within 24-48 hours.
- **Ring Support Adhesion Issues:** Ensure the case surface was clean and dry before applying the ring. If adhesion is weak, clean the area again and reapply with firm pressure. Avoid repositioning multiple times.
- **Case Fit Issues:** Double-check that you have the correct case model for your Ihunt S24 Ultra. Ensure the phone is fully seated within the silicone frame.

6. SPECIFICATIONS

Feature	Description
Compatible Phone Model	Ihunt S24 Ultra
Product Model	IMDL-LS
Material	PC hard back panel + soft silicone frame + metal support finger ring
Additional Features	360 Rotating Ring, Finger ring + support + car bracket magnetic suction, Magnetic
Form Factor	Solid protection with support
Built-In Media	1*Phone Case, 1*Tempered Glass Screen Protector
Item Dimensions (approx.)	0.39 x 0.39 x 0.39 inches (L x W x H)
Manufacturer	YA233A82 ARO-IMD

7. WARRANTY AND SUPPORT

Warranty information for this product is not explicitly provided in the product details. For any warranty claims, technical support, or assistance with your Generic Ihunt S24 Ultra Phone Case, please contact the seller or retailer from whom you purchased the product. They will be able to provide the most accurate and up-to-date information regarding product support and return policies.