

**usangreen 0746721402661**

# usangreen USB to RJ11/RJ12 RS232 Serial Converter Cable for JK JIKONG Battery BMS (Models XR04, XR05) Instruction Manual

Model: 0746721402661

## 1. INTRODUCTION

---

This manual provides instructions for the usangreen USB to RJ11/RJ12 RS232 Serial Converter Cable, designed to facilitate communication between a personal computer (PC) and JK JIKONG Battery Management Systems (BMS) models XR04 and XR05. The cable features a built-in FTDI FT231XS chip, ensuring broad compatibility with various operating systems.



**Figure 1:** The usangreen USB to RJ11/RJ12 RS232 Serial Converter Cable. This image displays the cable with its USB Type-A connector on one end and the RJ11/RJ12 connector on the other, featuring the "usangreen" branding on the USB housing.

## 2. PACKAGE CONTENTS

---

Verify that all items are present in the package:

- 1 x usangreen USB to RJ11/RJ12 RS232 Serial Converter Cable



**Figure 2:** Example of the product packaging. The image shows a white and orange pouch with "usangreen" branding, listing product name, batch number, brand, manufacturer, and contact information.

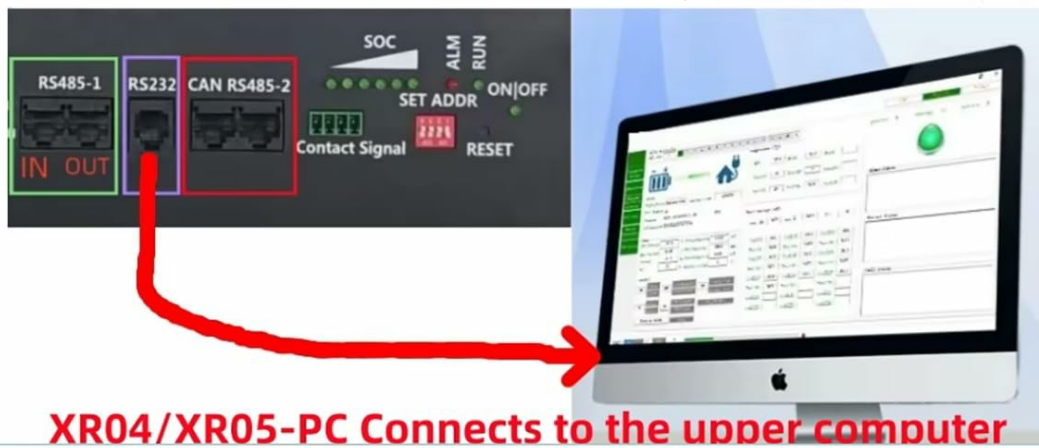
### 3. SETUP INSTRUCTIONS

Follow these steps to connect the cable and prepare for communication with your JK JIKONG BMS:

#### 1. Connect the Cable:

- Plug the USB Type-A end of the cable into an available USB port on your PC.
- Connect the RJ11/RJ12 end of the cable to the RS232 port on your JK JIKONG BMS (models XR04 or XR05). Ensure your BMS model has an RS232 communication port.

**XR04/XR05-PC Connects to the upper computer  
XR-RJ11 RS232 cable**



**Figure 3:** Diagram illustrating the connection of the XR04/XR05-PC cable to the upper computer. The image shows the usangreen USB cable connecting a PC to the RS232 port of a BMS unit.

**2. Install FTDI Drivers:**

The cable utilizes an FTDI FT231XS chip, which requires specific drivers for proper operation. These drivers are compatible with various operating systems, including Windows, Mac OS, Linux, Vista, and Wince.

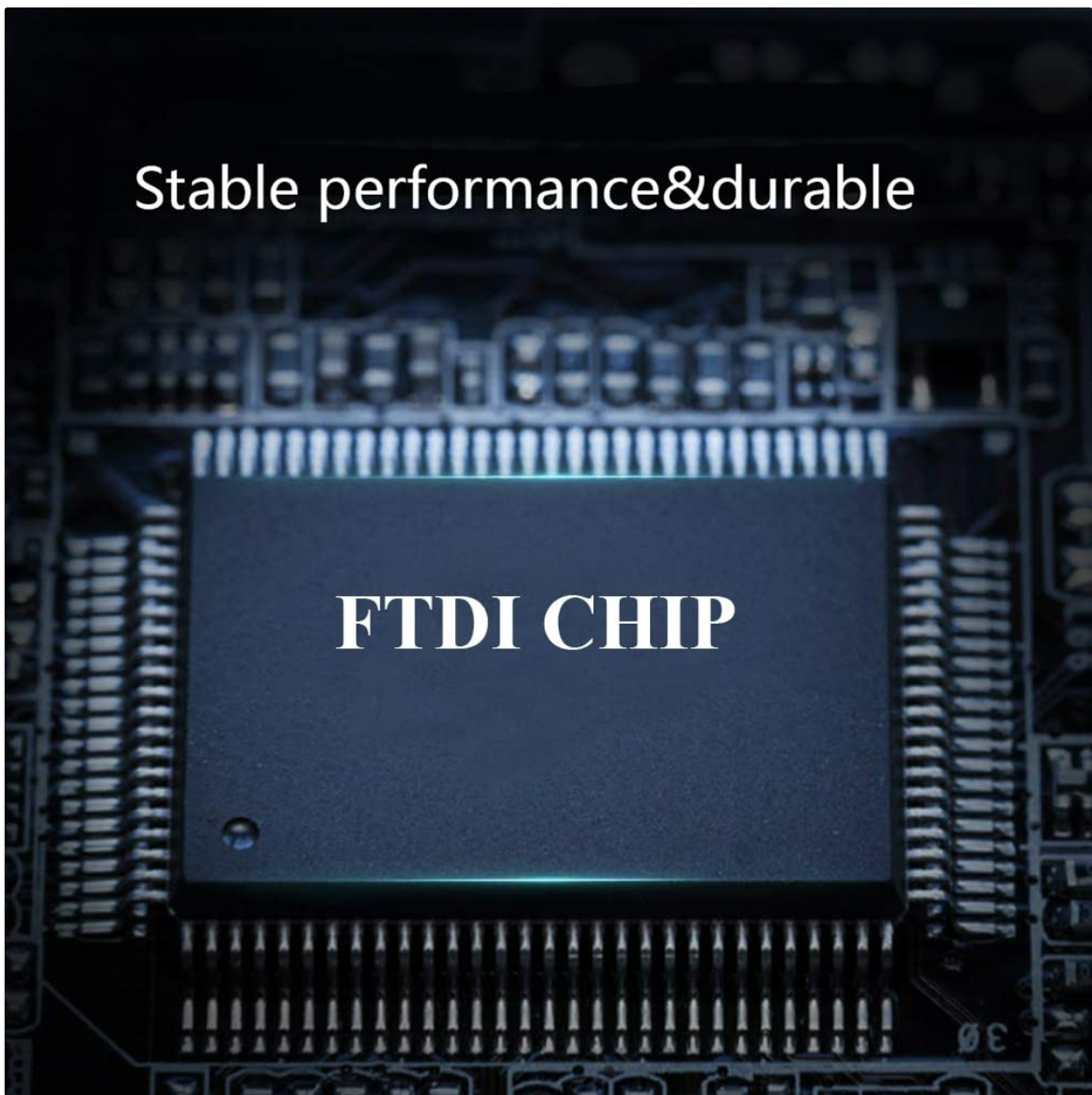
- Download the latest Virtual COM Port (VCP) drivers from the official FTDI website: [ftdichip.com/drivers/vcp-drivers/](http://ftdichip.com/drivers/vcp-drivers/).
- Follow the installation instructions provided on the FTDI website for your specific operating system.

## Multi system compatibility



**Figure 4:** Illustration of multi-system compatibility. This image displays logos for Windows 10, Windows 7, Mac OS, Windows 8, Windows XP, Windows Vista, and Linux, indicating broad driver support.

# Stable performance& durable



**Figure 5:** Close-up view of an FTDI chip, highlighting its role in stable performance and durability. The chip is labeled "FTDI CHIP" on a circuit board.

### 3. Identify the Serial Port:

- After driver installation, open your PC's "Device Manager" (Windows) or equivalent system utility (Mac/Linux).
- Locate the newly installed Virtual COM Port (VCP) under "Ports (COM & LPT)". Note the assigned COM port number (e.g., COM3, COM4).

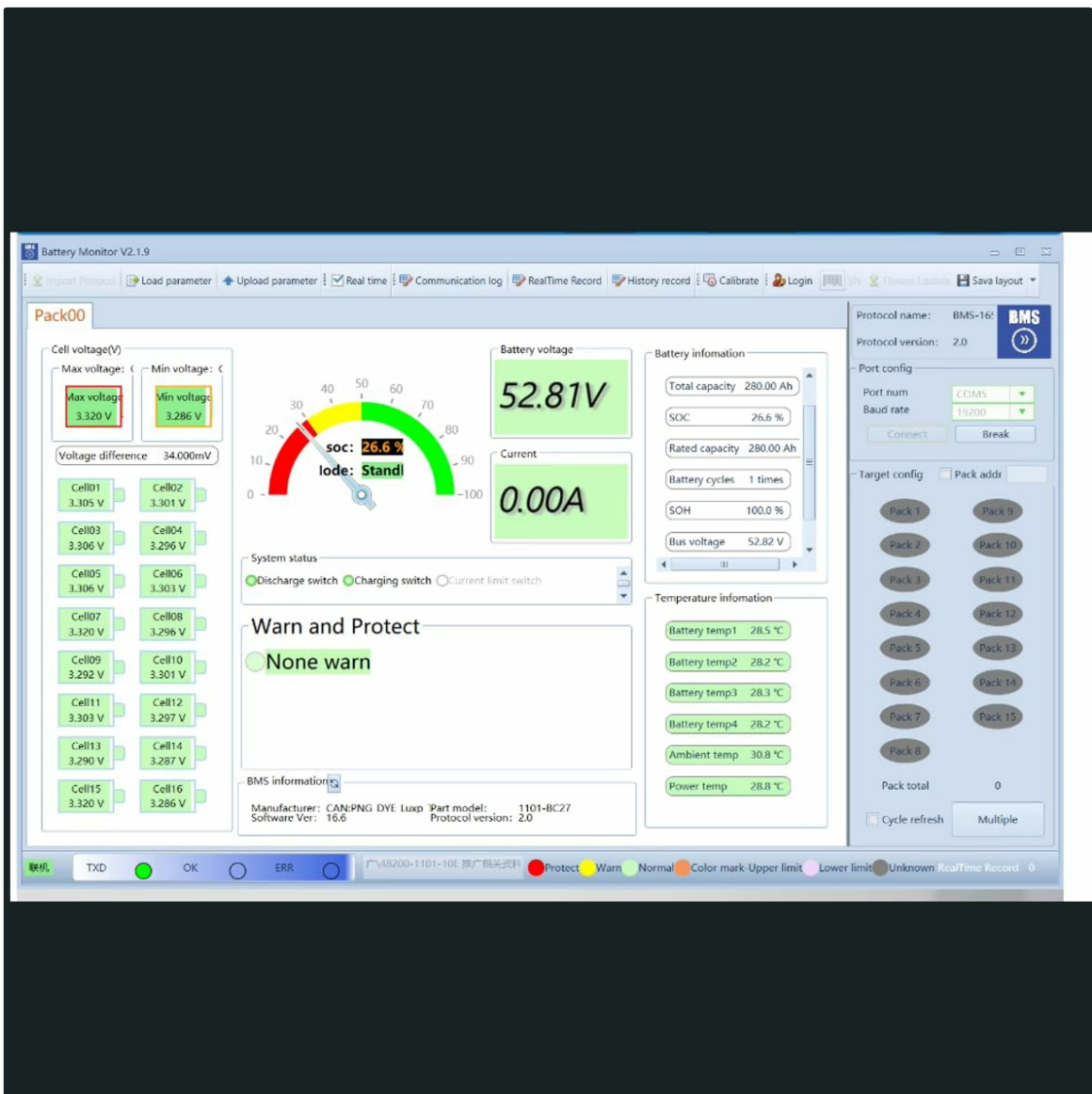
## 4. OPERATING INSTRUCTIONS

---

Once the cable is physically connected and drivers are installed, configure your BMS software for communication:

### 1. Configure BMS Software:

- Open the JK JIKONG BMS monitoring or configuration software on your PC.
- Navigate to the communication settings within the software.
- Select the COM port number identified in the previous setup step (e.g., COM3).
- Ensure that other communication parameters, such as baud rate, match the requirements of your specific JK JIKONG BMS model.



**Figure 6:** Screenshot of a Battery Monitor V2.1.9 software interface, showing various battery parameters, cell voltages, and communication settings. The "Port config" section indicates where the COM port would be selected.

## 2. Establish Connection:

Initiate the connection within the BMS software. The software should now be able to communicate with your JK JIKONG BMS, allowing you to monitor parameters, configure settings, and perform diagnostics.

## 5. MAINTENANCE

The usangreen USB to RJ11/RJ12 RS232 Serial Converter Cable is designed for durability with a PVC jacket and bare copper wires. To ensure longevity and reliable performance:

- Store the cable in a clean, dry environment when not in use.
- Avoid sharp bends or kinks in the cable, especially near the connectors, to prevent internal wire damage.
- Do not expose the cable to extreme temperatures or direct sunlight for extended periods.
- Clean the connectors gently with a dry, lint-free cloth if necessary.

## 6. TROUBLESHOOTING

If you encounter issues while using the usangreen USB to RJ11/RJ12 RS232 Serial Converter Cable, consider the following troubleshooting steps:

- **No Connection/Device Not Recognized:**
  - **Verify Driver Installation:** Ensure the FTDI VCP drivers are correctly installed. Re-download and install them from the [official FTDI website](#) if necessary.
  - **Check Device Manager:** Confirm that the Virtual COM Port appears in your PC's Device Manager without any error symbols.
  - **Try Different USB Port:** Connect the cable to a different USB port on your PC.
  - **Restart PC:** A system restart can sometimes resolve driver recognition issues.
- **BMS Software Communication Failure:**
  - **Correct COM Port:** Double-check that the correct COM port is selected in your BMS software, matching the one identified in Device Manager.
  - **Baud Rate Mismatch:** Ensure the baud rate in the BMS software matches the required baud rate for your JK JIKONG BMS model.
  - **BMS Compatibility:** Confirm that your specific JK JIKONG BMS model (XR04, XR05) has an RS232 communication port. This cable is designed for RS232 communication, not CAN.
  - **Cable Integrity:** Inspect the cable for any visible damage or loose connections.

## 7. SPECIFICATIONS

<b>Brand</b>	usangreen
<b>Model Number</b>	0746721402661
<b>Connector Type</b>	USB Type A, RJ11/RJ12 (6P6C)
<b>Cable Type</b>	Serial (RS232)
<b>Compatible Devices</b>	JK JIKONG Battery BMS (XR04, XR05) with RS232 port
<b>Chipset</b>	FTDI FT231XS
<b>Operating System Support</b>	Windows, Mac OS, Linux, Vista, Wince
<b>Cable Material</b>	PVC Jacket, Bare Copper Wires
<b>Cable Length</b>	6 Feet
<b>Outer Diameter (OD)</b>	3.5mm
<b>Special Feature</b>	Data Transfer
<b>Package Dimensions</b>	5.51 x 3.94 x 0.79 inches
<b>Item Weight</b>	2.12 ounces

## 8. SUPPORT INFORMATION

For further assistance, driver downloads, or inquiries regarding the usangreen USB to RJ11/RJ12 RS232 Serial Converter Cable, please refer to the following resources:

- **FTDI Official Website:** For the latest VCP drivers and technical documentation related to the FTDI chipset, visit [ftdichip.com/drivers/vcp-drivers/](http://ftdichip.com/drivers/vcp-drivers/).
- **Contact usangreen:** If you require product-specific support or have questions not covered in this manual, please contact us via Amazon Message.