

PUTORSEN 57

PUTORSEN Ultrawide Monitor Wall Mount User Manual

Model: 57

1. INTRODUCTION

Thank you for choosing the PUTORSEN Ultrawide Monitor Wall Mount. This heavy-duty monitor arm is designed to securely support ultra-wide monitors up to 57 inches and weighing up to 44 lbs (20 kg). Featuring a gas spring mechanism, it offers full motion adjustability for optimal viewing angles and ergonomic positioning. This manual provides essential information for safe installation, operation, and maintenance of your monitor mount.

2. SAFETY INFORMATION

Please read all instructions carefully before installation and use. Improper installation or use may result in property damage or personal injury.

- **Weight Capacity:** Do not exceed the maximum weight capacity of 44 lbs (20 kg). This mount is suitable for monitors between 17 and 57 inches.
- **Wall Type:** This mount is designed for installation on solid wood studs, concrete walls, or brick walls. **DO NOT install into drywall alone.** Ensure the wall structure can safely support the combined weight of the mount and your monitor.
- **VESA Compatibility:** Ensure your monitor has a compatible VESA pattern (75x75mm, 100x100mm, 100x200mm, 200x100mm, 200x200mm). Non-VESA monitors or non-standard patterns require an additional adapter (not included).
- **Gas Spring:** The gas spring is under tension. Exercise caution during installation and adjustment to prevent injury.
- **Tools:** Use appropriate tools for installation. If unsure, consult a qualified professional.

Compatible Wall Types



Figure 2.1: Illustration of compatible wall types for secure installation: wood stud, solid concrete, and brick. A warning indicates not to install on drywall alone.

3. PACKAGE CONTENTS

Verify that all components are present before beginning installation:

- Monitor Wall Mount Arm Assembly
- Wall Plate
- VESA Plate (pre-attached or separate)
- Mounting Hardware Kit (screws, anchors, washers)
- Allen Keys for adjustments
- Instruction Manual

4. SPECIFICATIONS

Brand	PUTORSEN
-------	----------

Model	57
Mounting Type	Wall Mount
Material	Alloy Steel
Color	White
Monitor Size Compatibility	17" - 57"
Weight Capacity	Up to 44 lbs (20 kg)
VESA Compatibility	75x75mm, 100x100mm, 100x200mm, 200x100mm, 200x200mm
Height Adjustment Range	10.6 inches
Extension Range	4 inches (retracted) to 19.1 inches (extended)
Tilt Angle	+60° to -20°
Swivel Angle	+90° to -90°
Rotation	+90° to -90° (Portrait/Landscape)

5. SETUP AND INSTALLATION

Follow these steps for secure installation of your PUTORSEN monitor wall mount.

5.1. Prepare Your Workspace

- Clear the area where you plan to install the mount.
- Gather necessary tools: drill, stud finder (for wood studs), level, pencil, measuring tape.

5.2. Wall Plate Installation

1. Determine the desired height for your monitor. Mark the position for the wall plate.
2. For wood studs, use a stud finder to locate the center of a stud. For concrete/brick, ensure the wall is solid.
3. Hold the wall plate against the wall at the marked position and use a level to ensure it is straight. Mark the drill holes.
4. Drill pilot holes according to the size specified in the mounting hardware kit.
5. Secure the wall plate to the wall using the provided screws and anchors (if applicable for concrete/brick). Ensure it is firmly attached.

5.3. Arm Assembly

Assemble the monitor arm components as shown in the diagram. The gas spring arm connects to the wall plate, and the VESA plate attaches to the end of the arm.



Tension Adjustment



Clockwise

If the arm rises



Counter-Clockwise

If the arm drops

Tilt Adjustment

Adjust the tilt screw here if the screen is sagging or tilt upwards



Figure 5.1: Step-by-step diagram illustrating the assembly of the monitor wall mount arm, showing how components connect from the wall plate to the VESA plate.

5.4. Monitor Attachment

1. Attach the VESA plate to the back of your monitor using the appropriate screws from the hardware kit. Ensure the screws are tightened securely but do not overtighten.
2. Carefully lift your monitor and slide the VESA plate (with monitor attached) onto the arm's mounting head. Ensure it clicks into place or is secured with any locking mechanisms.
3. For monitors with non-standard VESA patterns or recessed VESA mounts, an additional adapter (not included) may be required. Refer to your monitor's manual for VESA compatibility.

Upgraded & Patented Tilt Head

Reinforced design, More Stronger

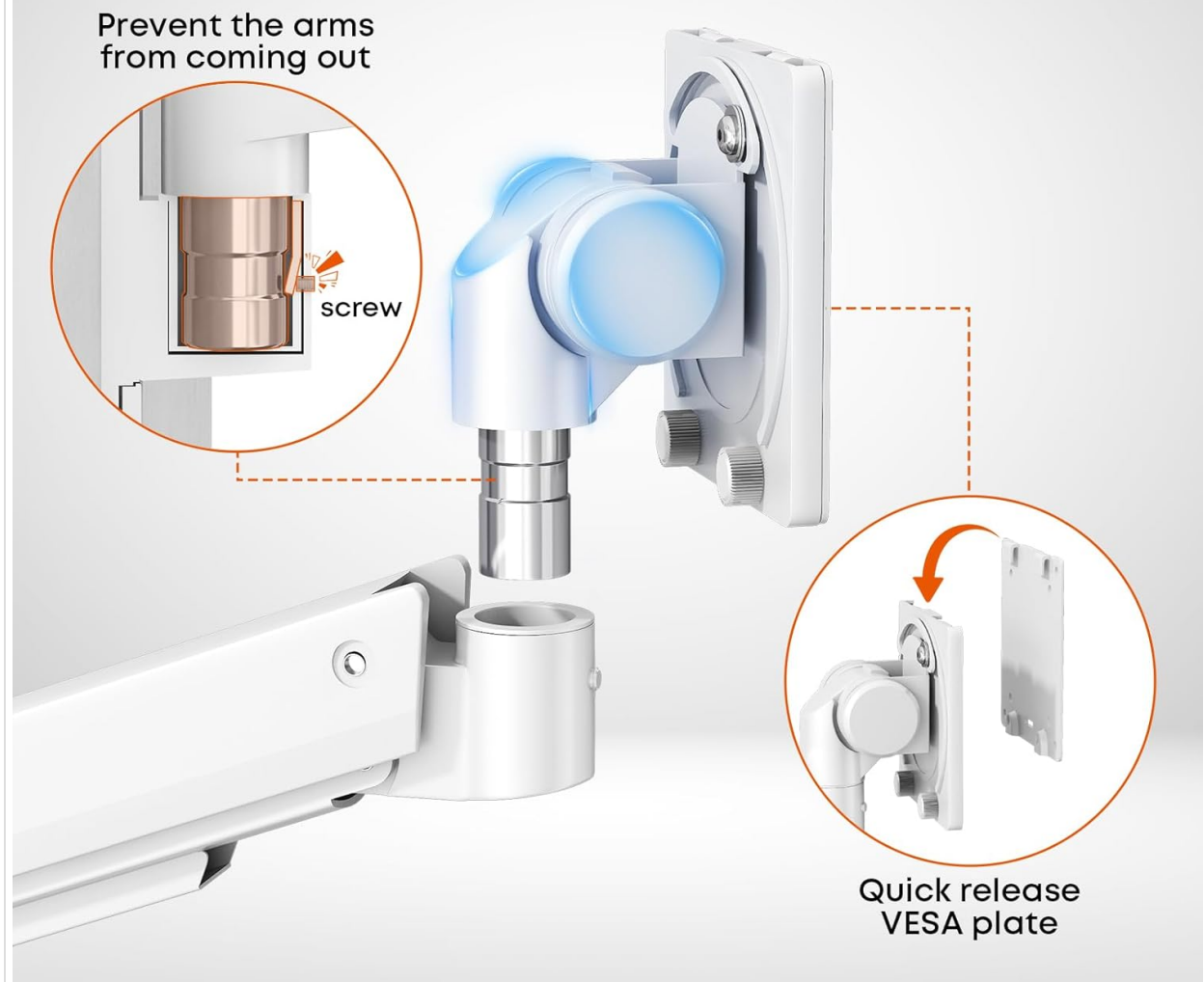


Figure 5.2: Close-up view of the upgraded tilt head and quick-release VESA plate mechanism, showing how the VESA plate attaches to the arm.

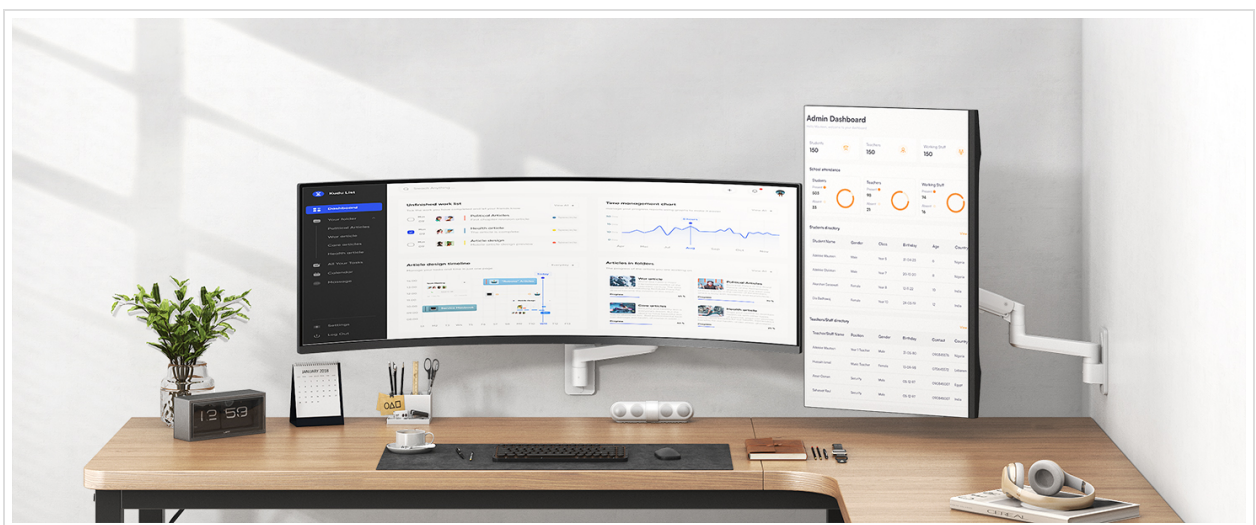


Figure 5.3: Diagram illustrating how to check if your monitor requires a VESA adapter, particularly for non-VESA or non-standard pattern monitors.

6. OPERATING AND ADJUSTMENTS

The PUTORSEN monitor arm offers a wide range of motion for ergonomic positioning.

6.1. Height Adjustment

The gas spring allows for smooth vertical movement. Gently push or pull the monitor up or down to achieve the desired height. The arm provides 10.6 inches of height adjustment.

6.2. Tilt Adjustment

Tilt the monitor screen up or down to reduce glare and optimize viewing angles. The tilt range is +60° to -20°.

6.3. Swivel Adjustment

Swivel the monitor left or right up to 90° in either direction to share your screen or adjust your viewing position.

6.4. Rotation

Rotate the monitor 90° to switch between landscape and portrait orientations.

6.5. Extension and Retraction

Extend the monitor arm up to 19.1 inches from the wall for maximum flexibility or retract it to 4 inches to save space.

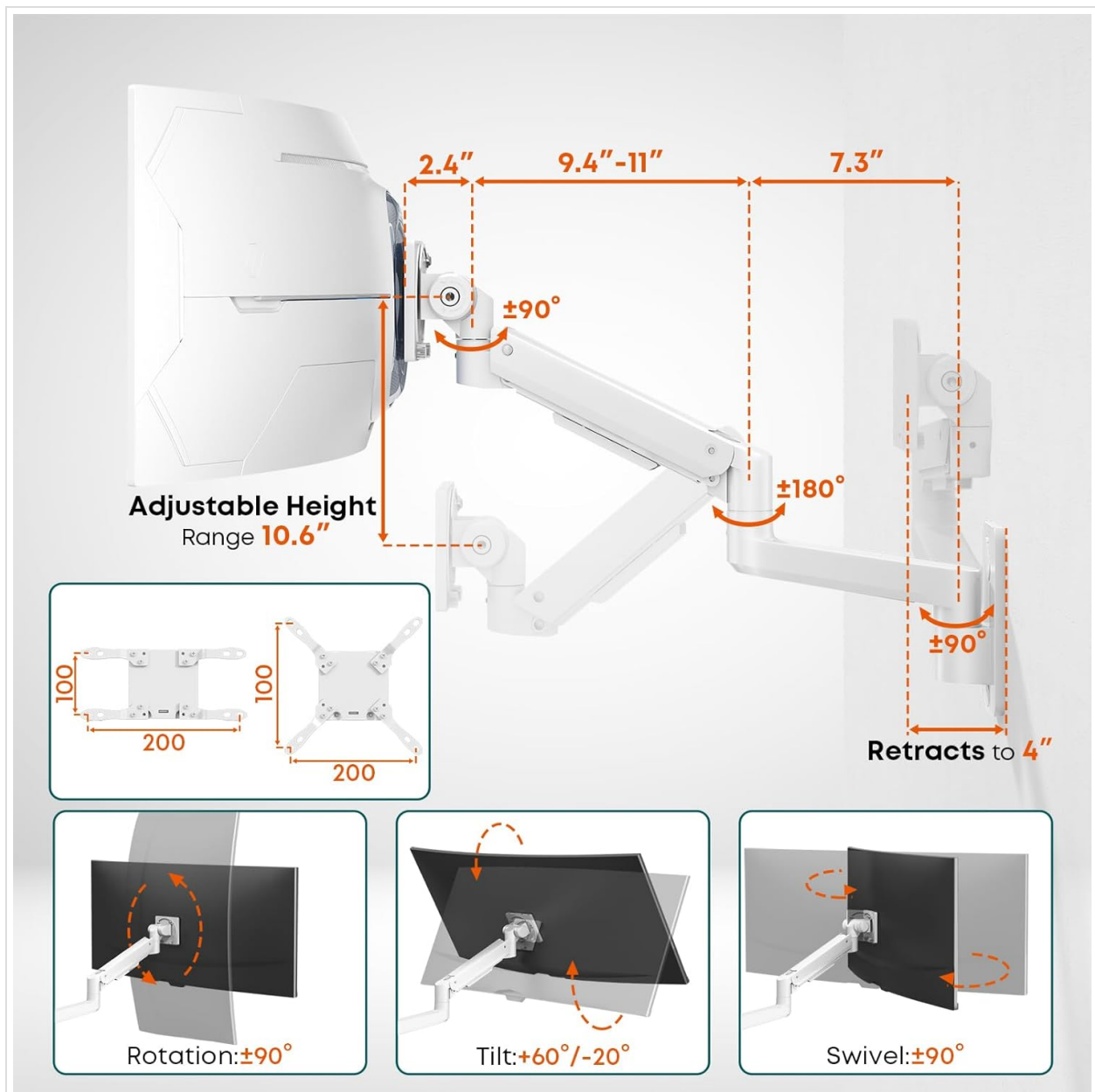


Figure 6.1: Diagram illustrating the adjustable height range (10.6 inches), extension/retraction, and various movement capabilities including rotation ($\pm 90^\circ$), tilt ($\pm 60^\circ/\pm 20^\circ$), and swivel ($\pm 90^\circ$).



Figure 6.2: Visual representation of the monitor's rotation, tilt, and swivel adjustments, demonstrating the full range of motion.

6.6. Cable Management

Utilize the integrated cable management channels along the arm to route and conceal monitor cables for a tidy workspace.

7. MAINTENANCE

Regular maintenance ensures the longevity and optimal performance of your monitor mount.

- **Cleaning:** Wipe the mount surfaces with a soft, damp cloth. Avoid abrasive cleaners or solvents.
- **Check Connections:** Periodically check all screws and connections to ensure they remain tight and secure.
- **Gas Spring Adjustment:** If the monitor arm does not hold its position or moves too easily/stiffly, adjust the gas spring tension as described in the Troubleshooting section.

8. TROUBLESHOOTING

Refer to these common issues and solutions.

8.1. Monitor Arm Sags or Drops

This indicates the gas spring tension is too low for your monitor's weight.

- **Solution:** Use the provided Allen key to turn the tension adjustment screw **clockwise**. Make small adjustments and test the arm's movement until it holds the monitor securely at any height.

8.2. Monitor Arm is Difficult to Move Upwards

This indicates the gas spring tension is too high for your monitor's weight.

- **Solution:** Use the provided Allen key to turn the tension adjustment screw **counter-clockwise**. Make small adjustments and test the arm's movement until it moves smoothly.

8.3. Monitor Tilts Downwards or Upwards Unintentionally

The tilt mechanism may need adjustment.

- **Solution:** Locate the tilt adjustment screw on the VESA head. Tighten this screw to increase friction and prevent unwanted tilting.

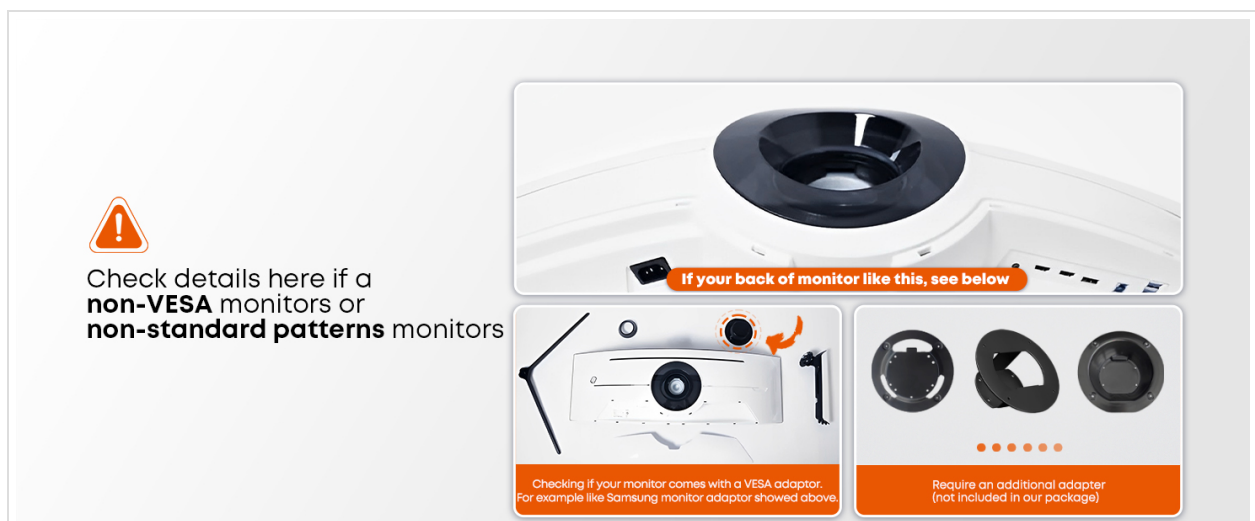


Figure 8.1: Diagram showing the locations for gas spring tension adjustment (clockwise for arm rise, counter-clockwise for arm drop) and tilt adjustment screw.

8.4. Monitor Does Not Fit VESA Plate

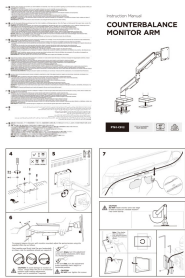
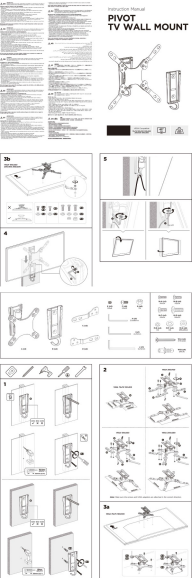
Your monitor may have a non-standard VESA pattern or require an adapter.


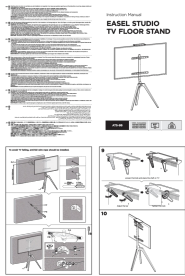
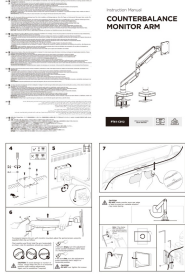
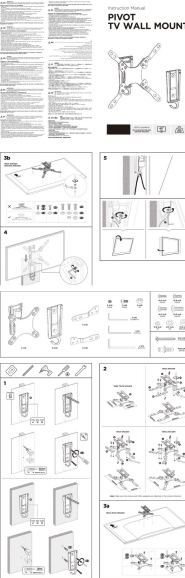
- **Solution:** Verify your monitor's VESA pattern against the mount's compatibility (75x75mm, 100x100mm, 100x200mm, 200x100mm, 200x200mm). If your monitor has a different pattern or a recessed VESA area, an additional VESA adapter (not included) may be necessary.

9. WARRANTY AND SUPPORT

The PUTORSEN Ultrawide Monitor Wall Mount is backed by a manufacturer's warranty. For specific warranty details, please refer to the product packaging or contact PUTORSEN customer support. For technical assistance, installation questions, or any concerns regarding your product, please contact our friendly tech support team. Contact information can typically be found on the product packaging or the official PUTORSEN website.

Related Documents - 57

	<p>PUTORSEN PT61-C012 Counterbalance Monitor Arm - Installation Manual & Guide</p> <p>Official instruction manual for the PUTORSEN PT61-C012 Counterbalance Monitor Arm. Learn how to safely install and adjust this heavy-duty, fully adjustable desk mount for ultrawide screens.</p>
	<p>PUTORSEN Pivot TV Wall Mount - Installation Manual</p> <p>Official installation manual for the PUTORSEN Pivot TV Wall Mount. Features VESA compatibility (75x75 to 200x200mm), supports 13-43 inch TVs up to 44 lbs, with detailed step-by-step assembly instructions for RVs, campers, and motorhomes.</p>

	<p>PUTORSEN HASD-282N Desktop Sit-Stand Workstation Instruction Manual</p> <p>Official instruction manual for the PUTORSEN HASD-282N Desktop Sit-Stand Workstation, detailing safety, usage, and assembly instructions for this height-adjustable desk converter.</p>
	<p>PUTORSEN EASEL STUDIO TV Floor Stand ATS-9B - Installation Manual</p> <p>Official installation manual for the PUTORSEN EASEL STUDIO TV Floor Stand (Model ATS-9B). This guide provides comprehensive, step-by-step assembly instructions, a detailed parts list, critical safety warnings, and maintenance tips for safely setting up and using your TV floor stand.</p>
	<p>PUTORSEN PT61-C012 Counterbalance Monitor Arm - Installation Manual & Guide</p> <p>Official instruction manual for the PUTORSEN PT61-C012 Counterbalance Monitor Arm. Learn how to safely install and adjust this heavy-duty, fully adjustable desk mount for ultrawide screens.</p>
	<p>PUTORSEN Pivot TV Wall Mount - Installation Manual</p> <p>Official installation manual for the PUTORSEN Pivot TV Wall Mount. Features VESA compatibility (75x75 to 200x200mm), supports 13-43 inch TVs up to 44 lbs, with detailed step-by-step assembly instructions for RVs, campers, and motorhomes.</p>