

Manuals+

[Q & A](#) | [Deep Search](#) | [Upload](#)

DELTA 3554-CZMPU-DST

Delta Trinsic U-Spout Widespread Bathroom Faucet Instruction Manual

Model: 3554-CZMPU-DST | Brand: DELTA

INTRODUCTION

This manual provides detailed instructions for the installation, operation, and maintenance of your Delta Trinsic U-Spout Widespread Bathroom Faucet. Inspired by the sleek elegance of modern European design, the Trinsic Bath Collection is engineered to complement contemporary bathroom aesthetics. This faucet incorporates Delta's advanced Diamond Seal Technology for long-lasting, leak-free performance and is WaterSense labeled, ensuring water efficiency without compromising functionality.



Figure 1: The Delta Trinsic U-Spout Widespread Bathroom Faucet in Champagne Bronze finish, featuring a high arc spout and two lever handles.

PRODUCT OVERVIEW AND FEATURES

The Delta Trinsic faucet is designed for widespread 3-hole installations, offering both aesthetic appeal and functional excellence. Key features include:

- **Diamond Seal Technology:** This patented design reduces leak points and ensures the faucet performs like new for life, lasting twice as long as the industry standard.
- **Brilliance Finishes:** Engineered for durability, these finishes are tested for corrosion resistance and are designed to resist cracking, peeling, chipping, blistering, or changing color over time.
- **InnoFlex PEX Supply Lines:** Integrated directly into the faucet, these supply lines are designed to resist cracks, kinks, and corrosion, reducing potential leak points.
- **WaterSense Labeled:** Uses at least 20% less water than the industry standard, contributing to water conservation without compromising performance.
- **Easy-to-Clean Metal Push-Pop Drain:** The included drain assembly unscrews from above the deck for quick removal and easy cleaning of hair and debris.

**LASTS
2X
LONGER**
— THAN —
INDUSTRY STANDARD*

DIAMOND™ Valve
eliminates wear on
seals ensuring
LEAK-FREE OPERATION
for the life of
the faucet

InnoFlex® PEX
supply lines
are integrated into
the faucet for
ONE LESS LEAK POINT

**Industry standard is based on ASME
A112.18.1 of 500,000 cycles*



Figure 2: Illustration of Delta's DIAMOND Seal Technology, highlighting the DIAMOND Valve and InnoFlex PEX supply lines for leak-free operation.



SCRATCH-RESISTANT HIGH PERFORMANCE FINISH

DELTA® BRILLIANCE® FINISHES

are tested against more than 100 household cleaners and undergo extreme abrasion testing to ensure a scratch-resistant surface



PROVEN RESULTS

Scratch-free Brilliance®
Stainless after passing 2,000
cycles of abrasion testing

*Brushed finish shown in extreme close-up

TESTED & CERTIFIED

All Delta finishes are third-party certified and vigorously tested to ensure years of dependable use without cracking, peeling, chipping, blistering or changing color over time.



CORROSION RESISTANCE



ABRASION RESISTANCE



CHEMICAL RESISTANCE



FINISH ADHESION



WATER IMMERSION

Figure 3: Demonstration of the scratch-resistant and high-performance nature of Delta Brilliance Finishes, tested against household cleaners and abrasion.

CHAMPAGNE BRONZE™

A warm, muted soft gold finish



see what Delta can do™



Brushed
Nickel

Champagne
Bronze™

Brushed
Gold

Polished
Gold

Figure 4: A visual comparison of various Delta finishes, showcasing the warm, muted soft gold of the Champagne Bronze finish.

INNOFLEX[®]

PEX SUPPLY LINES



INTEGRATED
INTO THE FAUCET

MADE TO RESIST CRACKS,
KINKS AND CORROSION



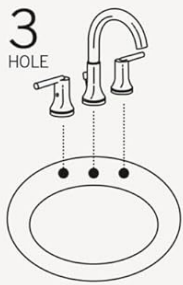
Figure 5: Visual representation of InnoFlex PEX supply lines, integrated into the faucet to resist cracks, kinks, and corrosion.

SPECIFICATIONS

Attribute	Detail
Brand	DELTA
Model Name	Trinsic®
Model Number	3554-CZMPU-DST
Color	Champagne Bronze
Material	Stainless Steel

Attribute	Detail
Finish Type	Brushed
Mounting Type	Deck Mount
Installation Type	Widespread (3-hole, 4-16 inch spread)
Number of Handles	2
Product Dimensions (D x W x H)	6.44" x 12.13" x 7.5"
Spout Reach	5 inches
Maximum Deck Thickness	2.25 inches
Hole Size	1.13-1.5 inches
Water Supply Connection	3/8 inch
Item Weight	5.24 pounds
Special Feature	Lead Free
Included Components	Instruction Manual, Metal Push-Pop Drain Assembly

HOLES FOR INSTALLATION



ADDITIONAL INFORMATION

**MINIMUM CLEARANCE
TO BACKSPLASH**
2.5 inches

DRAIN ASSEMBLY
Included

SUPPLY LINES
Included

**MAXIMUM DECK
THICKNESS**
2.25 inches

HOLE SIZE
1.13–1.5 inches

**WATER SUPPLY
CONNECTION**
3/8 inch



DIMENSIONS



Figure 6: Detailed dimensions for the Delta Trinsic Widespread Bathroom Faucet, including height, spout reach, and installation hole requirements.

INSTALLATION INSTRUCTIONS

Before beginning installation, ensure you have all necessary tools and components. Refer to the included instruction manual for detailed diagrams and safety warnings. This faucet is designed for easy DIY installation.

- 1. Prepare the Installation Area:** Ensure the sink deck has three holes with a widespread range of 4-16 inches and a maximum deck thickness of 2.25 inches. The hole size should be between 1.13-1.5 inches.
- 2. Install Faucet Body:** Position the main faucet body and handles into the pre-drilled holes on your sink or countertop.
- 3. Connect Water Lines:** Utilize the wrench-free, quick-connect hose system. Listen for an audible click to confirm proper connection of the water lines, which helps prevent leaks. The integrated InnoFlex PEX supply lines are designed for durability.
- 4. Secure Faucet:** Tighten the mounting nuts from underneath the sink to secure the faucet assembly firmly to the

deck.

5. **Install Drain Assembly:** Install the metal push-pop drain assembly according to the separate instructions provided. Ensure a proper seal to prevent leaks.
6. **Connect Supply Lines to Water Stops:** Connect the 3/8 inch water supply connections to your hot and cold water stops.
7. **Test for Leaks:** Once all connections are made, slowly turn on the water supply and check for any leaks at all connection points.

For detailed step-by-step visual guides, please refer to the comprehensive installation manual included in your product packaging.

OPERATING THE FAUCET

Your Delta Trinsic widespread faucet features two lever handles for precise control over water temperature and flow.

- **Cold Water:** The right handle controls the cold water. Turn the handle counter-clockwise to increase cold water flow.
- **Hot Water:** The left handle controls the hot water. Turn the handle counter-clockwise to increase hot water flow.
- **Temperature Control:** Adjust both handles simultaneously to achieve your desired water temperature.
- **Flow Control:** The further you turn the handles, the greater the water flow.



Figure 7: The Delta Trinsic faucet installed and in operation on a bathroom vanity, demonstrating its functional elegance.

CARE AND MAINTENANCE

Proper care and maintenance will ensure the longevity and appearance of your Delta Trinsic faucet.

- **Cleaning the Finish:** To clean the Champagne Bronze Brilliance finish, use a soft, damp cloth. Avoid abrasive cleaners, harsh chemicals, or polishes, as these can damage the finish. The Brilliance finish is designed to resist corrosion and scratches, making it easy to maintain with simple cleaning.
- **Cleaning the Drain:** The metal push-pop drain is designed for easy cleaning. Simply unscrew the drain stopper from above the deck to remove it. This allows for quick and easy removal of hair and other debris that may accumulate in the sink drain. Reinstall by screwing it back into place.
- **Aerator Maintenance:** If water flow decreases, the aerator may be clogged. Unscrew the aerator from the end of the spout, clean any debris, and rinse thoroughly before reattaching.



Figure 8: Visual guide demonstrating the easy removal and cleaning of the metal push pop-up drain, ensuring better performance and hygiene.

This section addresses common issues you might encounter with your faucet. For more complex problems, contact Delta Faucet customer support.

Problem	Possible Cause	Solution
Low Water Flow	Clogged aerator or debris in supply lines.	Remove and clean the aerator. Flush supply lines if necessary.
Leaking from Spout	Debris in valve or worn seals.	Flush the faucet by turning off water, removing handles, and turning water back on briefly. If problem persists, contact support.
Leaking at Base of Faucet	Loose mounting nuts or improper seal during installation.	Ensure mounting nuts are securely tightened. Check for proper sealant application.
Difficulty Adjusting Temperature	Mineral buildup in cartridges.	Contact Delta Faucet customer support for assistance with cartridge maintenance.

WARRANTY AND SUPPORT

Delta Faucet stands behind the quality of its products. Your Delta Trinsic U-Spout Widespread Bathroom Faucet is backed by a **Lifetime Limited Warranty**.

This warranty covers defects in material and workmanship for as long as the original consumer purchaser owns the home in which the faucet was first installed. For full warranty details and terms, please refer to the warranty information included with your product or visit the official Delta Faucet website.

For technical assistance, replacement parts, or warranty claims, please contact Delta Faucet Company customer support. Contact information can typically be found on the Delta Faucet website or in the documentation provided with your product.

Manufacturer: Delta Faucet Company