



Manuals.plus /

› Veehoo /

› Veehoo Chewproof Elevated Dog Bed (Model CWC2203B03) Instruction Manual

Veehoo CWC2203B03

Veehoo Chewproof Elevated Dog Bed Instruction Manual

Model: CWC2203B03

1. INTRODUCTION

Thank you for choosing the Veehoo Chewproof Elevated Dog Bed. This elevated pet cot is designed to provide a comfortable, cool, and durable resting space for your dog, suitable for both indoor and outdoor use. Its chew-proof design and breathable mesh fabric ensure longevity and easy maintenance. This manual provides essential information for assembly, operation, maintenance, and troubleshooting to ensure optimal use of your new dog bed.

2. SAFETY INFORMATION

- Always supervise your pet, especially when they are first introduced to the bed.
- Ensure all parts are securely assembled before allowing your pet to use the bed.
- Do not exceed the maximum weight capacity of 100 pounds for this size (42"L x 30"W x 7"H).
- Regularly inspect the bed for any signs of wear, damage, or loose parts. Discontinue use if damage is found.
- Keep the bed away from open flames or excessive heat sources.
- This product is intended for pet use only.

3. PACKAGE CONTENTS

Before assembly, please ensure all components are present:

- Fabric Mat (1)
- Long Side Pipes (2)
- Short Side Pipes (2)
- Legs (4)
- Corner Connectors (4)
- Screws (quantity as needed for assembly)
- Hex Tool (1)

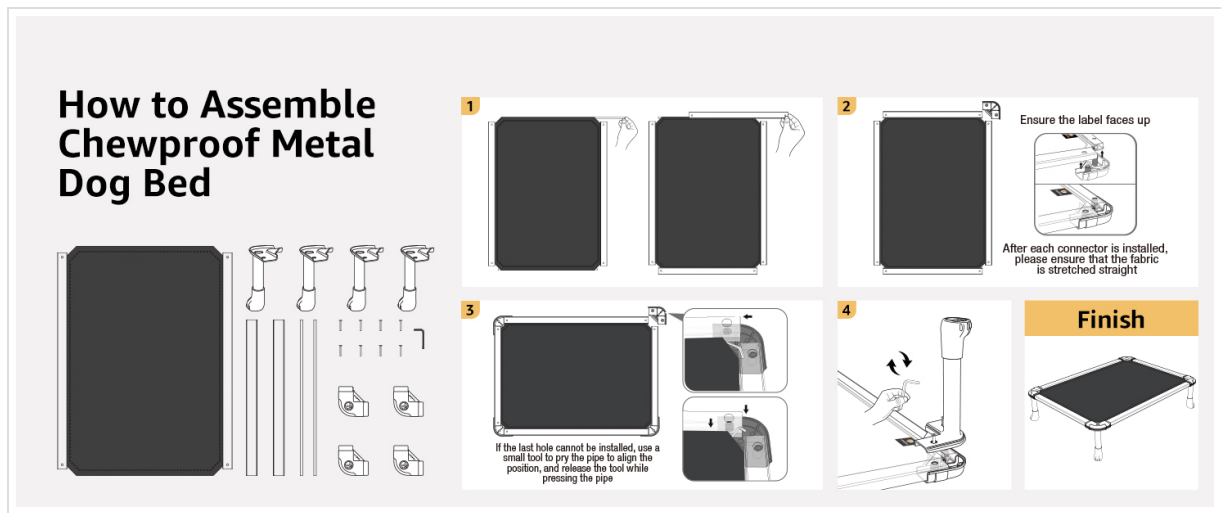


Figure 3.1: All components included in the package for assembly.

4. SETUP AND ASSEMBLY

Follow these steps to assemble your Veehoo Elevated Dog Bed. Some parts may be pre-assembled for quicker setup.

1. **Prepare the Fabric Mat:** Lay the fabric mat flat on a clean surface. Ensure the label on the mat faces upwards.
2. **Insert Side Pipes:** Slide the long side pipes into the sleeves along the longer edges of the fabric mat. Repeat for the short side pipes into the shorter edges. Ensure the fabric is stretched straight and taut.
3. **Attach Corner Connectors:** Connect the long and short side pipes using the corner connectors. Push firmly until they click into place. If a hole is difficult to align, use the hex tool to gently pry the pipe and align it while releasing the ball inside the connector.
4. **Attach Legs:** Insert the four legs into the designated slots on the corner connectors. Secure them with the provided screws using the hex tool. Ensure all screws are tightened for stability.

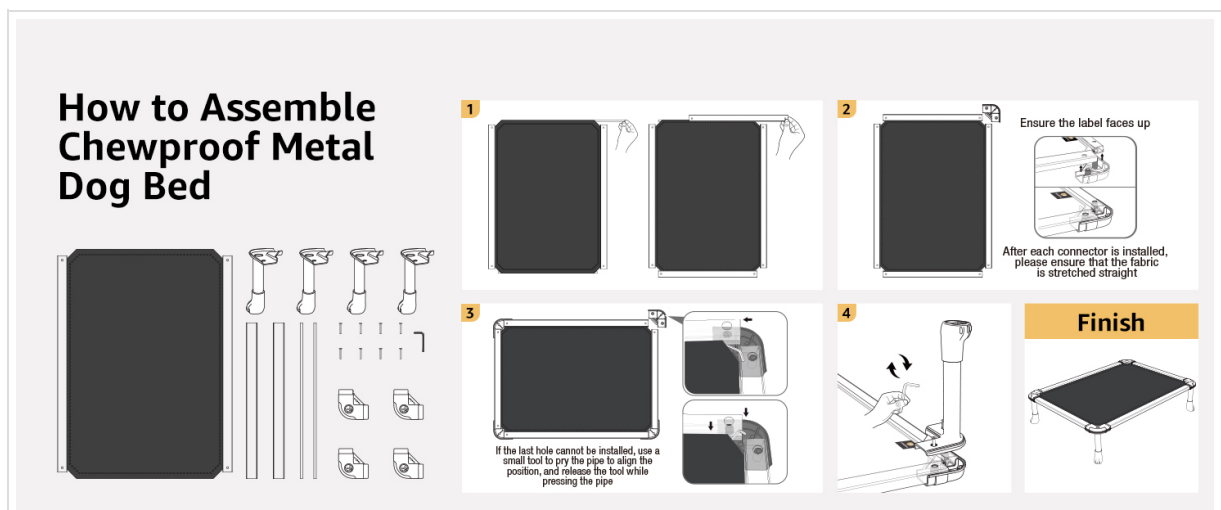


Figure 4.1: Visual guide for assembling the elevated dog bed.



Figure 4.2: The Veehoo Elevated Dog Bed fully assembled and ready for use.

5. OPERATING INSTRUCTIONS

The Veehoo Elevated Dog Bed is designed for versatile use:

- **Placement:** Position the bed in a location where your pet typically rests, ensuring it is on a stable, flat surface.
- **Indoor Use:** Ideal for providing a comfortable, elevated spot in your home, keeping your pet off cold or hard floors.
- **Outdoor Use:** The durable Textilene fabric and rust-resistant metal frame make it suitable for patios, decks, or camping, keeping your pet cool and dry off the ground.
- **Cooling Benefit:** The elevated design and breathable mesh promote airflow, helping to keep your pet cool during warmer weather.



Figure 5.1: Dog bed in an indoor setting, providing a comfortable resting spot.

6. MAINTENANCE AND CLEANING

Maintaining your Veehoo Elevated Dog Bed is simple:

- **Routine Cleaning:** Pet hair and dirt do not easily cling to the tight mesh fabric. For light cleaning, simply wipe the fabric with a damp cloth.
- **Deep Cleaning:** For more thorough cleaning, the bed can be hosed off with water. Allow it to air dry completely before reuse.
- **Frame Cleaning:** Wipe the metal frame with a damp cloth as needed. Avoid abrasive cleaners that could damage the finish.
- **Inspection:** Periodically check the fabric for tears and the frame for rust or damage.

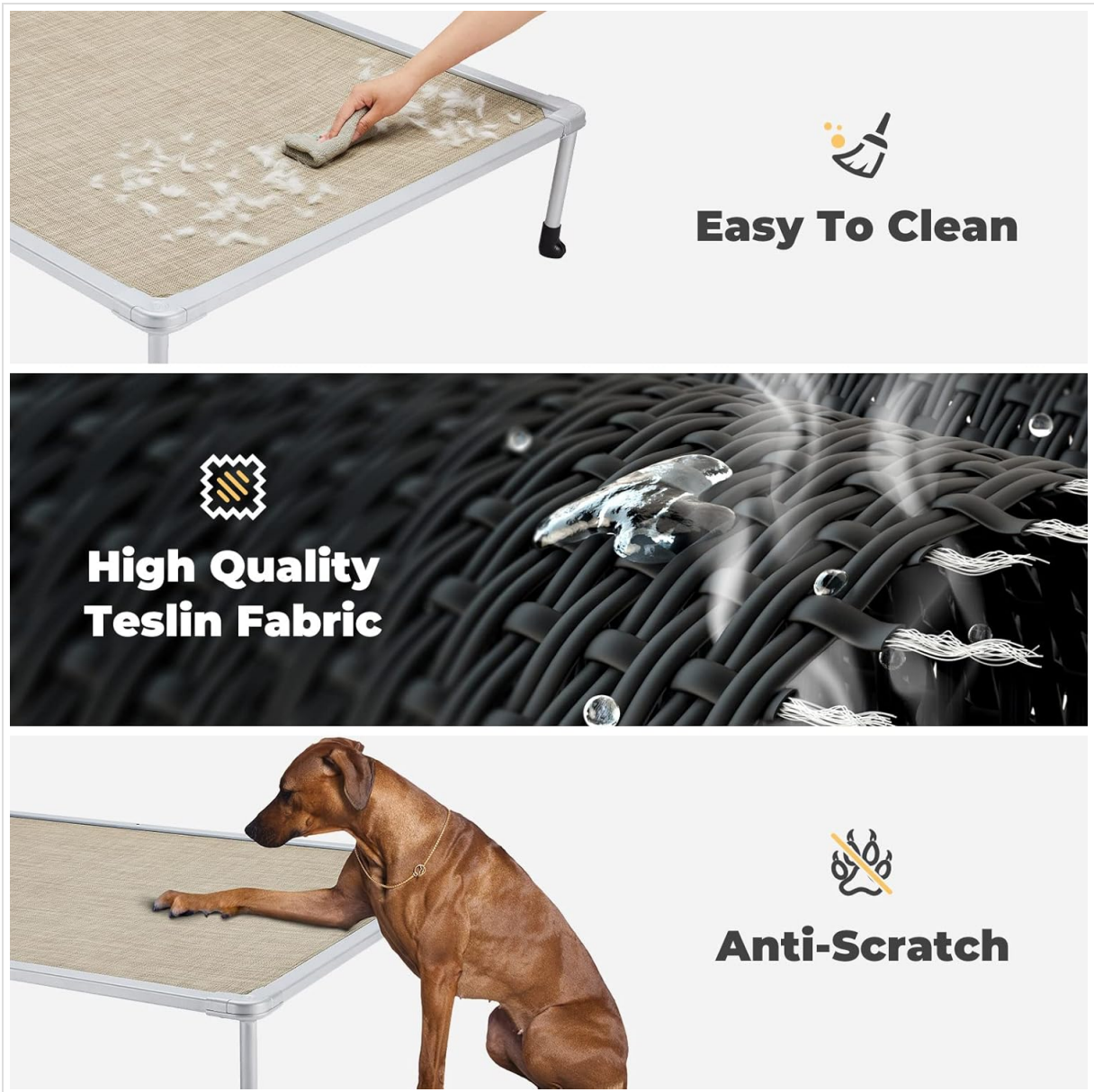



Figure 6.1: The bed's mesh fabric is designed for easy cleaning.

7. TROUBLESHOOTING

Issue	Possible Cause	Solution
Difficulty connecting pipes/corners during assembly.	Misalignment of pipes or internal locking mechanism.	Ensure pipes are fully inserted into the fabric sleeves. Use the hex tool to gently align the pipe and release the internal ball mechanism in the connector if it's stuck. Apply firm, even pressure.
Fabric appears loose or sags after assembly.	Pipes not fully stretched within the fabric sleeves or not properly seated in connectors.	Disassemble and re-stretch the fabric over the pipes, ensuring it is taut before re-connecting the corners. Verify all connections are secure.
Pet is not using the bed.	Unfamiliarity with the new bed or preference for existing resting spots.	Place a familiar blanket or toy on the bed. Encourage your pet with treats and positive reinforcement. Allow time for adjustment.
Bed wobbles or is unstable.	Legs not fully inserted or screws not tightened.	Check that all four legs are fully inserted into the corner connectors and that all screws are securely tightened with the hex tool. Ensure the bed is on a level surface.

8. SPECIFICATIONS

Feature	Detail
Model Number	CWC2203B03
Dimensions (L x W x H)	42.0"L x 30.0"W x 7.0"Th (107 x 76 x 18 cm)
Weight Capacity	Up to 100 pounds
Material	Iron frame, Textilene Mesh fabric
Color	Beige Coffee Mat, Silver Metal Frame
Item Weight	8.82 pounds
Special Features	Chewproof, Cooling, Breathable, Washable, Non-Slip
Recommended Breeds	Large dogs (e.g., German Shepherd, Golden Retriever, Akita)



Dimensions	Body Length	Height	Max Load	Dog Breed Example
32"x25"x7"	under 29.53"	under 23.62"	150lbs	English Bulldog
42"x30"x7"	under 39.37"	under 27.56"	150lbs	German Shepherd/ Golden Retriever
49"x33"x9"	under 47.24"	under 31.50"	150lbs	Husky
59"x37.5"x9"	under 57"	under 35.43"	250lbs	Great Dane

Figure 8.1: Detailed size guide for Veehoo Elevated Dog Beds.

9. WARRANTY INFORMATION

Veehoo products are manufactured with quality and durability in mind. For specific warranty details regarding your Chewproof Elevated Dog Bed, please refer to the warranty card included with your purchase or visit the official Veehoo website. Keep your proof of purchase for any warranty claims.

10. CUSTOMER SUPPORT

If you have any questions, concerns, or require assistance with your Veehoo Chewproof Elevated Dog Bed, please contact our customer support team. Contact information can typically be found on the product packaging, the official Veehoo website, or through your retailer's support channels. Please have your model number (CWC2203B03) and purchase date ready when contacting support.