

## XLX Screwdriver01

# XLX 3.7V Cordless Electric Screwdriver Instruction Manual

Model: Screwdriver01 | Brand: XLX

## 1. INTRODUCTION

Welcome to the instruction manual for your XLX 3.7V Cordless Electric Screwdriver. This versatile tool is designed for various home repair and DIY projects, offering convenience and efficiency. Please read this manual thoroughly before use to ensure safe and optimal performance.

## 2. IMPORTANT SAFETY INSTRUCTIONS

Always follow basic safety precautions when using electrical tools to reduce the risk of fire, electric shock, and personal injury.

- Keep your work area clean and well lit. Cluttered or dark areas invite accidents.
- Do not operate power tools in explosive atmospheres, such as in the presence of flammable liquids, gases, or dust. Power tools create sparks which may ignite the dust or fumes.
- Keep children and bystanders away while operating a power tool. Distractions can cause you to lose control.
- Wear appropriate personal protective equipment, including eye protection, hearing protection, and suitable gloves.
- Avoid accidental starting. Ensure the switch is in the off-position before connecting to battery pack, picking up or carrying the tool.
- Do not overreach. Maintain proper footing and balance at all times. This enables better control of the power tool in unexpected situations.
- Disconnect the battery pack from the power tool before making any adjustments, changing accessories, or storing power tools. Such preventive safety measures reduce the risk of starting the power tool accidentally.
- Store idle power tools out of the reach of children and do not allow persons unfamiliar with the power tool or these instructions to operate the power tool.

- Maintain power tools and accessories. Check for misalignment or binding of moving parts, breakage of parts, and any other condition that may affect the power tool's operation. If damaged, have the power tool repaired before use.
- Use the power tool, accessories and tool bits etc. in accordance with these instructions, taking into account the working conditions and the work to be performed. Use of the power tool for operations different from those intended could result in a hazardous situation.
- Do not use the tool if the switch does not turn it on and off. Any power tool that cannot be controlled with the switch is dangerous and must be repaired.
- Do not abuse the charging cable. Never use the cable for carrying, pulling or unplugging the power tool. Keep cable away from heat, oil, sharp edges or moving parts.
- Do not expose power tools to rain or wet conditions. Water entering a power tool will increase the risk of electric shock.

### 3. PACKAGE CONTENTS

Verify that all items listed below are included in your package:

- 1x XLX Cordless Electric Screwdriver
- 1x USB-Type C Charging Cable
- 12x Screwdriver Bits (compatible with Phillips, Slotted, and Hex screws)
- 1x Magnetic Screwdriver Extender (24MM/50MM)



This image displays all components included in the XLX 3.7V Cordless Electric Screwdriver package: the screwdriver unit, a USB-Type C charging cable, a set of 12 versatile screwdriver bits, and a magnetic screwdriver extender.

## 4. PRODUCT FEATURES

- **Powerful & Cordless Lithium-Ion Battery:** Equipped with a 900mAh rechargeable lithium-ion battery (3.7V DC), this electric screwdriver delivers long-lasting performance with a 3–5-hour charging time via USB-Type C (cable included). Enjoy cordless convenience for home repairs without frequent recharging.
- **High Torque & Precision Control:** Boasts 3.0N.m max electric torque and 10.0N.m manual torque for tackling stubborn screws, paired with a 245RPM speed for efficient yet controlled driving. Perfect for appliances, electronics, furniture, and DIY projects.
- **12 Versatile Bits + Dual-Length Shafts:** Includes 12 screwdriver bits (compatible with Phillips, slotted, and hex screws) and two magnetic extension shafts (24MM/50MM) to fit tight spaces or deep recesses. A complete toolkit for diverse repair needs.
- **Built-in LED Light for Dark Spaces:** The integrated LED light illuminates dimly lit work areas (e.g., under cabinets, car interiors, or electrical panels), ensuring accuracy even in low-light conditions.
- **Compact & Ergonomic Design:** Lightweight and pocket-sized for easy handling, with a non-slip grip for comfort during prolonged use. Ideal for professionals and home users alike.

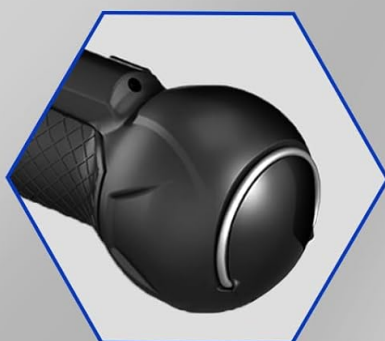
# FRONT LED LIGHT



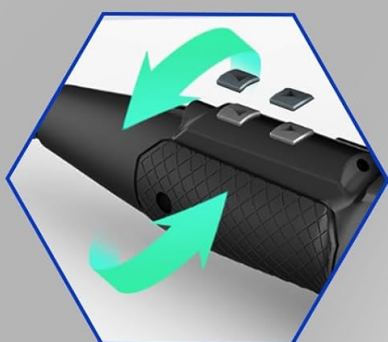
This image demonstrates the integrated LED light illuminating a screw in a dark cabinet, highlighting its utility in low-light conditions.



**USB charging port**



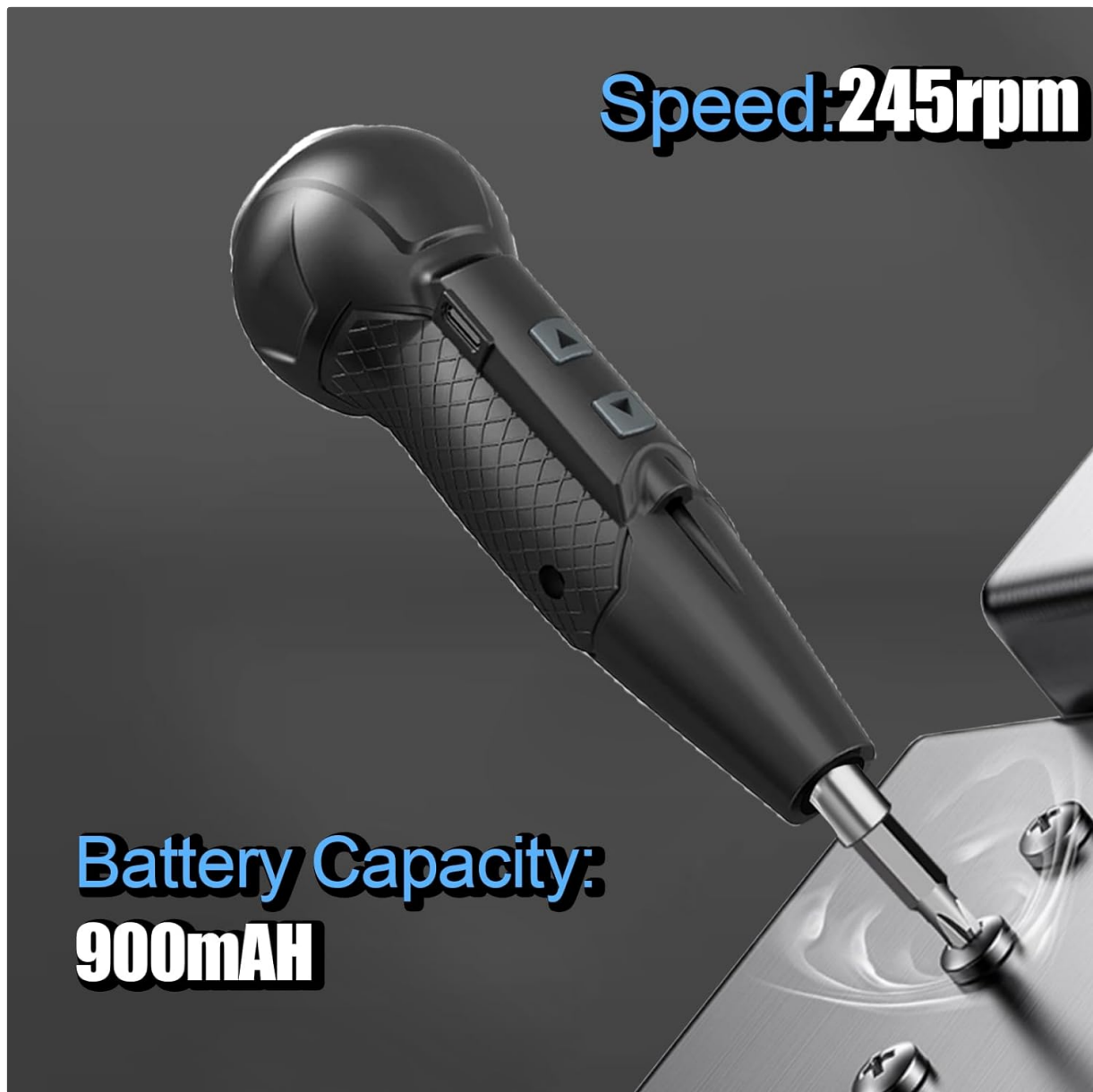
**Hook rings**



**Direction button**



This image shows key features of the screwdriver: the USB charging port, hook rings for portability, and the direction buttons for forward and reverse operation.



This image illustrates the compact and portable design of the XLX electric screwdriver, easily fitting into a pocket for convenient transport.

## 5. SETUP

### 5.1 Charging the Battery

Before first use, or when the battery is low, charge the screwdriver:

1. Locate the USB-Type C charging port on the screwdriver.
2. Connect the provided USB-Type C cable to the screwdriver and a compatible USB power source (e.g., wall adapter, computer USB port).
3. Allow 3-5 hours for a full charge. The indicator light will typically illuminate during charging and change or turn off when fully charged.

### 5.2 Attaching Screwdriver Bits

To prepare the screwdriver for use:

1. Select the appropriate screwdriver bit for your task from the included 12-piece set.
2. Insert the bit firmly into the magnetic chuck at the front of the screwdriver. Ensure it is seated securely.

3. For reaching screws in tight or deep spaces, first insert one of the magnetic extension shafts into the chuck, then insert the desired bit into the extender.

## 6. OPERATING INSTRUCTIONS

### 6.1 Forward and Reverse Operation

The screwdriver features two direction buttons for driving and removing screws:

- Press the **forward button** (usually indicated by an arrow pointing away from the handle) to drive screws in.
- Press the **reverse button** (usually indicated by an arrow pointing towards the handle) to remove screws.

### 6.2 Using the LED Light

The integrated LED light automatically activates when either the forward or reverse button is pressed, providing illumination for your work area, especially in dimly lit conditions.

### 6.3 Manual Operation

For stubborn screws or when more precise control is needed, the screwdriver can also be used manually. Simply hold the screwdriver firmly and turn it by hand. The maximum manual torque is 10.0N.m, allowing you to apply additional force beyond the electric motor's capacity.



# WIDE RANGE OF APPLICATIONS



This image illustrates the wide range of applications for the XLX electric screwdriver, including assembling furniture, working on electronics, and general home repairs.

## 7. MAINTENANCE

Proper maintenance ensures the longevity and optimal performance of your screwdriver.

- **Cleaning:** Wipe the screwdriver with a dry, soft cloth after each use. Do not use harsh chemicals, abrasive cleaners, or immerse the tool in water.
- **Storage:** Store the screwdriver and its accessories in the provided case in a dry, cool place, away from direct sunlight, moisture, and extreme temperatures.
- **Battery Care:** To prolong battery life, avoid fully discharging the battery frequently. Recharge the battery periodically (e.g., every 3-6 months) even if the tool is not in regular use.
- **Bit Maintenance:** Keep screwdriver bits clean and free of debris. Replace worn or damaged bits to ensure effective operation and prevent damage to screw heads.

## 8. TROUBLESHOOTING

Refer to the table below for common issues and their solutions.



Problem	Possible Cause	Solution
Screwdriver not turning on.	Battery is discharged.	Charge the battery for 3-5 hours using the provided USB-Type C cable.
Screwdriver lacks power/torque.	Battery is low or screw is too tight for electric mode.	Recharge the battery. For very tight screws, apply manual torque or pre-drill a pilot hole if appropriate.
Screwdriver bit falls out of chuck.	Bit not fully inserted or magnetic chuck is dirty.	Ensure the bit is fully inserted and seated securely. Clean the magnetic chuck if necessary to improve magnetic hold.

## 9. SPECIFICATIONS

Technical details for the XLX 3.7V Cordless Electric Screwdriver:

Feature	Detail
Brand	XLX
Model Number	Screwdriver01
Battery Type	Lithium-ion Battery
Battery Capacity	900mAh
Voltage	3.7V (DC)
Maximum Electric Torque	3.0N.m
Maximum Manual Torque	10.0N.m
Speed	245rpm
Charging Time	3-5 hours
Item Weight	12.3 ounces
Package Dimensions	7.13 x 3.43 x 1.93 inches
Special Features	Built-in LED Light, Automatic/Manual Mode

## 10. WARRANTY AND CUSTOMER SUPPORT

For warranty information or technical support regarding your XLX 3.7V Cordless Electric Screwdriver, please refer to the product packaging or contact XLX customer service directly. Keep your purchase receipt as proof of purchase for any warranty claims.

