

Loniko U1-1-WH

Loniko U1 Smart Toilet Instruction Manual

Model: U1-1-WH

1. INTRODUCTION

This manual provides essential information for the safe and efficient installation, operation, and maintenance of your Loniko U1 Smart Toilet. Please read this manual thoroughly before installation and use, and retain it for future reference.

2. SAFETY INFORMATION

- Ensure all electrical connections are performed by a qualified electrician and comply with local codes.
- Do not immerse the product in water or spray water directly onto electrical components.
- Keep children and pets away from the toilet during operation, especially when the lid is opening or closing automatically.
- Do not use abrasive cleaners or harsh chemicals, as these can damage the surface and internal components.
- Always unplug the unit before performing any maintenance or cleaning.
- This product is designed for indoor use only.

3. PACKAGE CONTENTS

Verify that all components are present before beginning installation:

- Loniko U1 Smart Toilet Unit
- User Manual (this document)
- Remote Control

- Installation Screws
- Angle Valves
- Wax Ring
- Flange
- Widen Baby Seating
- Aroma Tablet
- Battery for Remote Control



Image: Loniko U1 Smart Toilet with all included installation accessories and remote control, including remote, screws, angle valves, wax ring, flange, widen baby seating, aroma tablet, manual, and battery.

4. SETUP AND INSTALLATION

The Loniko U1 Smart Toilet is designed for floor-mounted installation. For detailed step-by-step instructions, please refer to the dedicated installation guide provided with your product. Key considerations include:

- **Water Supply:** Ensure a dedicated cold water supply line is available.
- **Electrical Connection:** A grounded electrical outlet (120V AC) is required within reach of the toilet's power cord.
- **Drainage:** The toilet requires a standard floor drain. Maintain a 12-inch distance from the sewage outlet to the wall for proper fitment.
- **Leveling:** Ensure the toilet is level on the floor to prevent leaks and ensure proper operation.



Image: Dimensional diagram of the Loniko U1 Smart Toilet, illustrating its measurements and the required 12-inch clearance from the sewage outlet to the wall.

5. OPERATING INSTRUCTIONS

Your Loniko U1 Smart Toilet offers a range of automated and customizable features for enhanced comfort and hygiene.

5.1. Automatic Open/Close and Flushing

- **Approach Sensor:** The lid automatically opens as you approach the toilet.
- **Foot Sensor:** For male users, a foot sensor located on the bottom right of the toilet allows for hands-free seat opening.
- **Off-Seat Auto Flush:** The toilet automatically flushes when you leave the seat, utilizing a powerful siphonic system with 1.28 gallons per flush.
- **Automatic Closing:** Both the lid and seat close automatically after use, ensuring a touch-free experience.

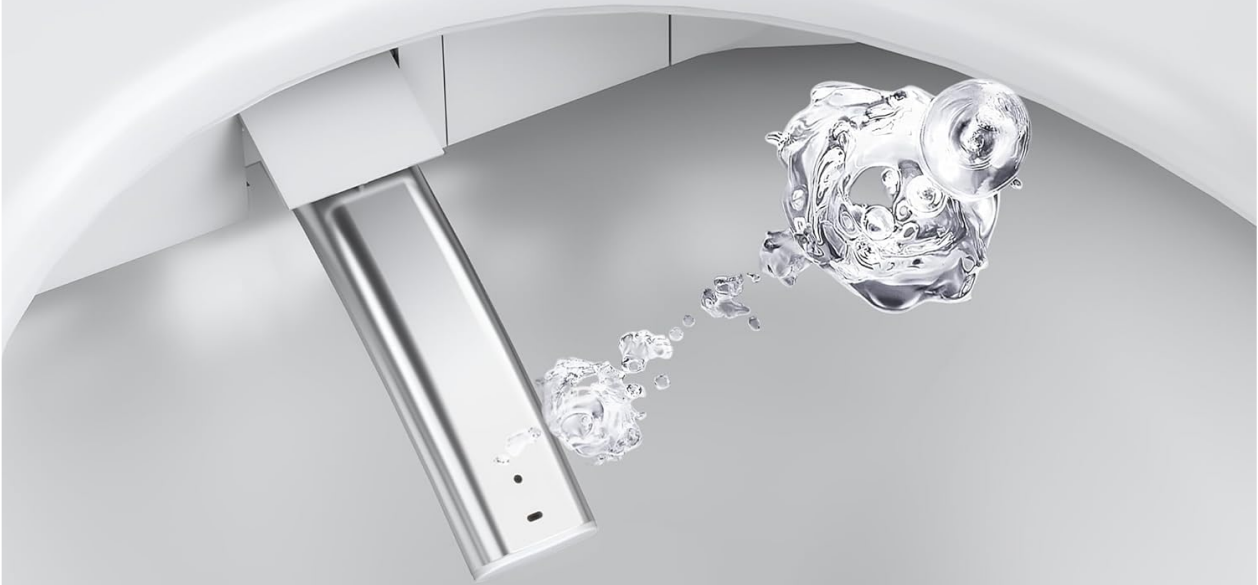
Mutiple Wash Modes

Room Temperature

🔥 94°F

🔥🔥 99°F

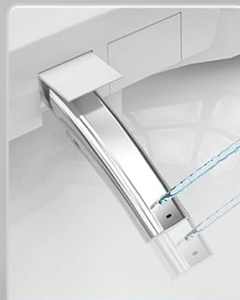
🔥🔥🔥 104°F



Rear Wash



Lady Wash



Moveable Wash



Self Cleaning

Image: Visual guide to the automatic open and close features, including approach detection, foot sensor activation, and automatic flushing upon departure.

One knob two direction control function



Image: Illustration of the off-seat auto flush mechanism, highlighting the powerful 360-degree siphonic wash for efficient waste removal.

5.2. Bidet Functions

The integrated bidet offers comprehensive cleaning options:

- **Wash Modes:** Includes Rear Wash, Feminine Wash, and Pulse Wash.
- **Adjustable Water Pressure:** Customize the water pressure to your preference.
- **Sanitary Filtered Water:** Ensures a clean and hygienic wash.
- **Self-Cleaning Nozzle:** The bidet nozzle performs a self-cleaning cycle before and after each use.

Heated Seat and Warm Air Dryer

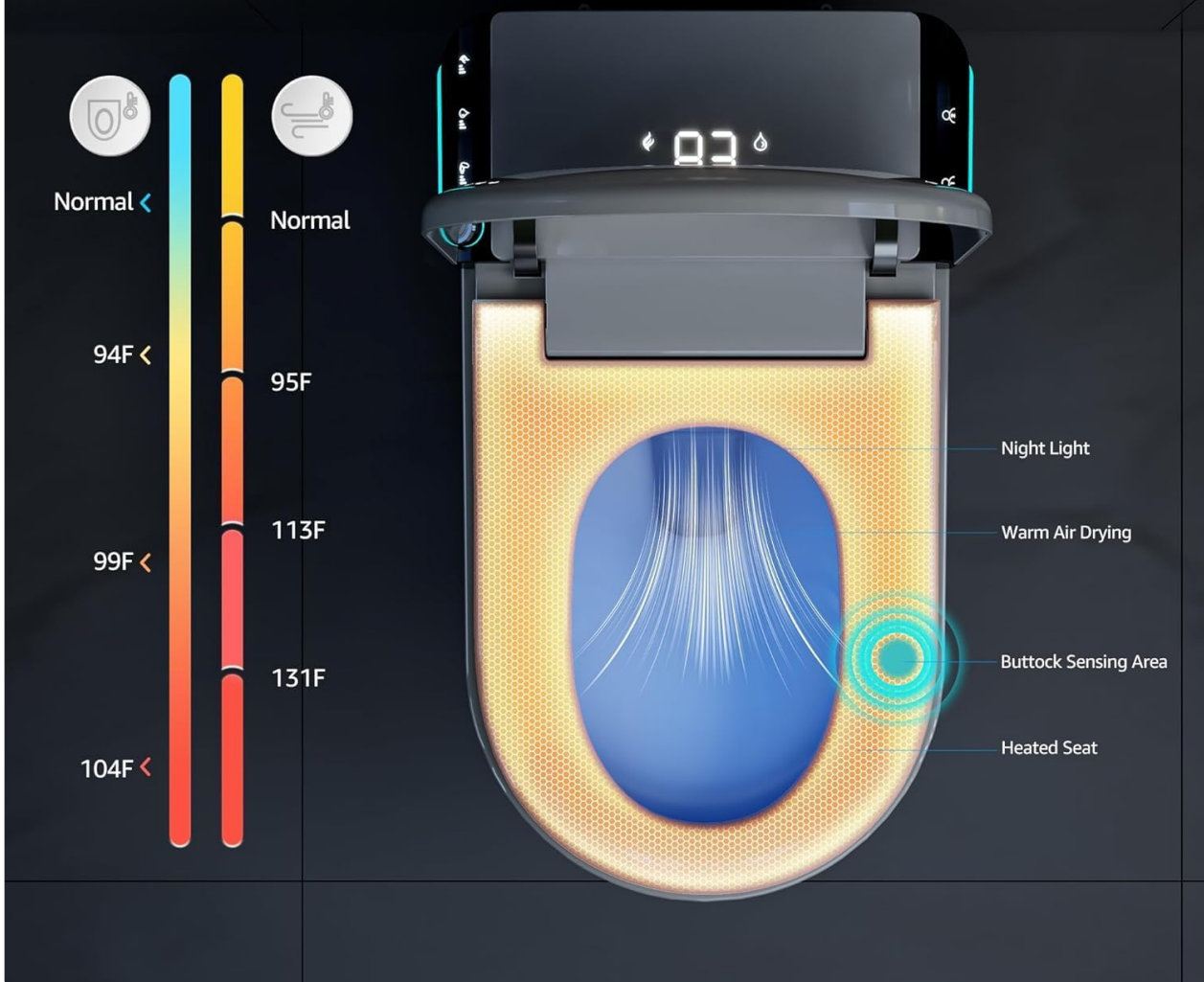


Image: Overview of the various bidet wash modes and temperature settings, demonstrating the nozzle's functionality for different cleaning needs.

5.3. Heated Seat and Warm Air Dryer

- **Heated Seat:** The contoured seat provides adjustable warmth for comfort, especially in colder environments.
- **Warm Air Dryer:** A powerful warm air dryer provides a comfortable drying experience after bidet use.
- **Adjustable Temperatures:** Water, seat, and drying temperatures can be adjusted to your personal preference.

Off-Seat Auto Flush

360° Siphon Washin



Image: Detailed view of the heated seat and warm air dryer features, including temperature indicators and the buttock sensing area.

5.4. Air Purification and Aromatherapy

- **Built-in Deodorizer:** A high-performance air filter eliminates unpleasant odors, improving bathroom air quality.
- **Dual Aromatherapy System:** The toilet features a dual aromatherapy system that releases fragrance, enhancing the freshness of your bathroom environment.

Parameter Description



Image: Depiction of the dual aromatherapy system for air freshening and the soft-close function of the toilet lid.

5.5. Dual Memory Settings and Controls

- **Dual User Memory:** Save individual preferences for two users, including water pressure, temperature, and wash mode. Access these settings via the touch panel.
- **Touch Screen Temperature Adjustment:** Easily adjust settings using the intuitive touch screen interface.
- **One Knob Two-Direction Control:** A single knob provides control for various functions such as feminine cleaning, one-time press functions, and hip cleaning.

Dual aromatherapy system

Make the air fresher



Soft Close

Provide a quiet space



Image: Close-up of the control panel, detailing the multi-directional knob for cleaning functions, and touch-sensitive areas for temperature and user memory settings.

5.6. Additional Features

- **Night Light:** Integrated LED night light for visibility in low-light conditions.
- **Widen Baby Seating:** The seat design includes a wider area for comfortable use by children, compatible with baby washing modes.



Image: The Loniko U1 Smart Toilet displaying its LCD digital screen and activated LED night light, illustrating its presence detection.



Image: Detail of the widened baby seating area, designed for comfort and compatibility with specific washing modes for children.

5.7. Product Demonstration Video

Your browser does not support the video tag.

Video: A demonstration of the Loniko U1 smart toilet's various functions, including automatic lid operation, bidet features, and control panel usage.

6. MAINTENANCE

Regular cleaning and maintenance will ensure the longevity and optimal performance of your smart toilet.

- **Exterior Cleaning:** Wipe the exterior surfaces with a soft, damp cloth and mild, non-abrasive soap. Avoid harsh chemicals.
- **Nozzle Cleaning:** The bidet nozzle has a self-cleaning function. For additional cleaning, gently wipe the nozzle with a soft cloth.

- **Filter Maintenance:** Periodically check and clean or replace the water filter as recommended in the full installation guide to maintain optimal bidet performance.
- **Deodorizer Filter:** The built-in deodorizer filter may require occasional cleaning or replacement. Refer to the detailed manual for instructions.
- **Power Off:** Always turn off the power and unplug the unit before performing any deep cleaning or maintenance.

7. TROUBLESHOOTING

If you encounter issues with your Loniko U1 Smart Toilet, refer to the following common troubleshooting steps. For persistent problems, contact customer support.

Problem	Possible Cause	Solution
No power/Unit unresponsive	Power cord unplugged, circuit breaker tripped, remote battery dead.	Check power connection, reset breaker, replace remote battery.
Lid not opening/closing automatically	Sensor obstructed, sensor dirty, proximity too far.	Clean sensors, ensure clear path, approach closer.
Bidet water not warm	Water heater off, temperature setting too low.	Check water heater status, adjust temperature settings.
Weak water pressure	Water supply valve partially closed, bidet filter clogged.	Ensure water supply valve is fully open, clean or replace bidet filter.
Toilet not flushing	Power issue, sensor malfunction, manual flush not activated.	Check power, clean sensors, use manual flush button if available.

8. SPECIFICATIONS

Feature	Detail
Model Number	U1-1-WH
Brand	Loniko
Color	White
Product Dimensions (D x W x H)	27.55" x 15.7" x 18.3"
Material	Ceramic, Polypropylene (PP)
Item Weight	104 Pounds
Installation Type	Floor Mounted
Flush System	Siphonic, 1.28 Gallons Per Flush (GPF)
Certifications	CUPC, ETL Certified

Feature	Detail
Waterproof Rating	IPX4
UPC	768825598194



Image: Certifications for the Loniko U1 Smart Toilet, including CUPC and ETL, ensuring safety and performance standards.



Image: The Loniko U1 Smart Toilet highlighted with an IPX4 waterproof rating, indicating resistance to splashing water.

9. WARRANTY AND SUPPORT

The Loniko U1 Smart Toilet is CUPC and ETL-certified, ensuring top-tier safety and performance. For any product-related inquiries or concerns, our dedicated support team is available 24/7 to assist you.

- **Customer Support:** For assistance, please refer to the contact information provided in your purchase documentation or visit the official Loniko website.
- **Returns:** This product is eligible for 30-day easy returns. Please refer to your retailer's return policy for details.