

Manuals+

[Q & A](#) | [Deep Search](#) | [Upload](#)

manuals.plus /

- › [BaldrTherm](#) /
- › [Smart Pool Thermometer with WiFi Gateway Instruction Manual](#)

BaldrTherm HCS015ARF-V2/HCS0565ARF-V4/HWG023WBRF-V2

BaldrTherm Smart Pool Thermometer with WiFi Gateway Instruction Manual

Model: HCS015ARF-V2/HCS0565ARF-V4/HWG023WBRF-V2

INTRODUCTION

The BaldrTherm Smart Pool Thermometer with WiFi Gateway provides accurate and convenient remote monitoring of water temperature in various aquatic environments. This manual will guide you through the setup, operation, and maintenance of your new device to ensure optimal performance.

WHAT'S IN THE BOX

- Smart Pool Thermometer (Floating Sensor)
- WiFi Gateway (Mini Box Hub)
- Indoor Monitor Display
- USB Power Cable for Gateway
- Instruction Manual



Image: The complete BaldrTherm Smart Pool Thermometer kit, showing the floating sensor, indoor monitor, and WiFi gateway.

SETUP

1. Install Batteries

Insert batteries into the Indoor Monitor Display first (2*AA batteries, not included). Ensure the signal indicator is blinking. Then, insert batteries into the Floating Pool Sensor (3*AAA batteries, not included). The temperature will display on the monitor once connected.



Image: Step 1 - Insert batteries into the monitor. Make sure the signal indicator is blinking.

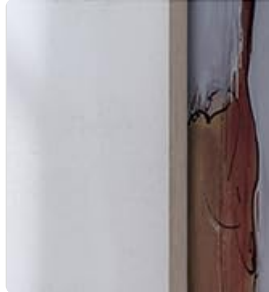


Image: Step 2 - Install batteries into the pool sensor. The temperature will display on the monitor once connected.

2. Connect to App (HomGar)

Download the HomGar app from your device's app store. Log in to the app and start adding the hub. Plug in the WiFi Gateway (Mini Box Hub) and hold the button until the blue light starts blinking. Follow the in-app instructions to complete the hub setup. Finally, add the Indoor Monitor Display to the hub in the app to complete all connections.



Image: Step 3 - Log in to the HomGar app and start adding the hub.



Image: Step 4 - Plug in the hub and hold the button until the blue light starts blinking. Follow the app instructions to complete the hub setup.



Image: Step 5 - Hold the hub connection button on the back of the monitor until the signal indicator blinks.



Image: Step 6 - Add the monitor to the hub in the app to complete all connections.

OPERATING INSTRUCTIONS

Reading Temperature

The floating sensor features a 360° reading design with three large screens, allowing you to easily read the water temperature from any angle. The indoor monitor displays both pool temperature and ambient indoor temperature/humidity.



Image: The floating sensor provides a 360° clear view of the temperature display.

LARGE DISPLAY SCREEN

 Low Battery Indicator

 HI/LO Indoor Record

 Indoor Humidity

 Indoor Thermometer

 HI/LO Pool Record

 Pool Temperature



 **HOT**

• **COMFORT**

 **COOL**



Image: The indoor monitor features a large display screen for easy readability of pool temperature, indoor temperature, and humidity.

Remote Monitoring & Alerts

With the connected WiFi Gateway, you can monitor water temperature data in real-time from anywhere using the HomGar App. Set custom temperature ranges, and receive instant alarm notifications on your app if the temperature exceeds or falls below your set limits. The system offers a long transmission distance of up to 330 feet (100 meters).

APP MONITORING ANYTIME, ANYWHERE

Track Temperature Trends for More Than 365 Days



Image: App monitoring allows you to track temperature trends anytime, anywhere.

330FT REMOTE MONITORING

Monitor Pool Temperature Just on Your Sofa.



Image: The system supports 330ft remote monitoring, allowing you to check the pool temperature from inside your home.

Your browser does not support the video tag.

Video: An official product video demonstrating the smart pool thermometer's features, including app connectivity and temperature monitoring.

Temperature Accuracy & Updates

The thermometer uses high-precision sensors for accurate and reliable data (Accuracy: $\pm 1^{\circ}\text{F}/^{\circ}\text{C}$). Data is automatically updated every 5 seconds, ensuring you stay informed about temperature changes. You can also switch between Celsius and Fahrenheit readings on the device.

ULTRA-PRECISION TEMPERATURE SENSOR



$\pm 0.9^{\circ}\text{F}$
Accuracy



5-Second
Real-Time Updates



High-Sensitivity
Probe

Image: The thermometer features an ultra-precision temperature sensor for fast and accurate readings.



Image: Easily convert between Celsius and Fahrenheit readings on the device.

Data Storage & Export

The BaldrTherm pool temperature monitor supports online viewing of 30-day data graphs and allows for the export of data recorded over the past 2 years, useful for tracking long-term trends.

Multi-Scenario Applications

This thermometer is ideal for a variety of water bodies, including swimming pools, paddling pools, hot tubs, fish ponds, jacuzzis, spas, and aquariums.

MULTI-SCENARIO APPLICATIONS



Swimming Pool



Hot Spring



Hot Tub



Baby Bath



Aquariums



Pond



Image: The thermometer is suitable for various aquatic environments such as pools, hot tubs, and aquariums.

MAINTENANCE

Waterproofing & Anti-Fog Design

The digital swimming pool thermometer features an IPX7 waterproof rating with a fully sealed, double-layer waterproof structure using waterproof rings and ultrasonic technology. This design prevents water vapor from entering the interior, ensuring accurate readings and preventing fogging even when immersed in water.

IPX7 WATERPROOF

0 Leakage, 100% Clear Screen



Anti-Fog Design

Image: The IPX7 waterproof and anti-fog design ensures clear readings and durability.

Battery Replacement

When the low battery indicator appears on the indoor monitor, replace the batteries in both the monitor and the floating sensor as described in the Setup section. Ensure the battery compartments are securely closed after replacement to maintain waterproofing.

TROUBLESHOOTING

Issue	Possible Cause	Solution
No temperature reading on monitor.	Batteries not installed or low; sensor not paired.	Install/replace batteries in both units. Re-pair the sensor and monitor as per setup instructions.
WiFi Gateway not connecting to app.	Incorrect WiFi password; 2.4GHz network required; out of range.	Ensure correct WiFi password. Confirm your network is 2.4GHz. Move gateway closer to router.

Issue	Possible Cause	Solution
Inaccurate temperature readings.	Sensor not fully submerged; sensor placed in direct sunlight for prolonged periods; sensor malfunction.	Ensure sensor is fully submerged. Place sensor in a shaded area if possible. Contact support if issue persists.
Floating sensor does not float properly.	Possible manufacturing defect or water ingress.	Ensure battery compartment is sealed correctly. If issue persists, contact customer support for warranty claim.

SPECIFICATIONS

Brand: BaldrTherm

Model Number: HCS015ARF-V2/HCS0565ARF-V4/HWG023WBRF-V2

Material: Acrylonitrile Butadiene Styrene

Display Type: Digital

Connectivity Technology: Wi-Fi (2.4GHz network only)

Temperature Accuracy: $\pm 1^{\circ}\text{F}/^{\circ}\text{C}$

Data Update Frequency: Every 5 seconds

Waterproof Rating: IPX7

Transmission Range: Up to 330ft (100m)

Power Source (Monitor): 2*AA Batteries (not included)

Power Source (Sensor): 3*AAA Batteries (not included)

Data Storage: 30-day in-app graphs, 2-year exportable data

WARRANTY AND SUPPORT

BaldrTherm offers an extensive **3-year warranty** for this product. Each package includes a detailed instruction manual for guidance. For any inquiries or assistance, our **24/7 online support** team is ready to help. Please refer to the contact information provided in your product packaging or visit the official BaldrTherm website for support details.