

## Cuzmok TV106S

# Cuzmok Cordless Stick Vacuum Cleaner User Manual

Model: TV106S

## 1. INTRODUCTION

Thank you for choosing the Cuzmok Cordless Stick Vacuum Cleaner. This manual provides essential information for the safe operation, maintenance, and troubleshooting of your new appliance. Please read it thoroughly before first use and keep it for future reference.

### Safety Instructions

- Read all instructions before using the appliance.
- Do not use outdoors or on wet surfaces.
- Do not allow to be used as a toy. Close attention is necessary when used by or near children.
- Use only as described in this manual. Use only manufacturer's recommended attachments.
- Do not use with damaged cord or plug. If appliance is not working as it should, has been dropped, damaged, left outdoors, or dropped into water, return it to a service center.
- Do not pull or carry by cord, use cord as a handle, close a door on cord, or pull cord around sharp edges or corners. Do not run appliance over cord. Keep cord away from heated surfaces.
- Do not unplug by pulling on cord. To unplug, grasp the plug, not the cord.
- Do not handle plug or appliance with wet hands.
- Do not put any object into openings. Do not use with any opening blocked; keep free of dust, lint, hair, and anything that may reduce air flow.
- Keep hair, loose clothing, fingers, and all parts of body away from openings and moving parts.
- Do not pick up anything that is burning or smoking, such as cigarettes, matches, or hot ashes.
- Use extra care when cleaning on stairs.
- Do not use to pick up flammable or combustible liquids, such as gasoline, or use in areas where they may be present.
- Do not use without dust bag and/or filters in place.

- Turn off all controls before unplugging.
- Store your appliance indoors in a cool, dry area.

## 2. WHAT'S IN THE BOX

Carefully unpack all components and check against the list below. If any items are missing or damaged, please contact customer support.



Image: The Cuzmok Cordless Stick Vacuum Cleaner shown with its main body, extension wand, floor brush, and various attachments including a 2-in-1 brush, crevice tool, and wall mount.



Image: All included components of the vacuum cleaner, such as the main motor unit, extension tube, floor brush, battery, charger, 2-in-1 tool, crevice tool, wall mount, and user manual, neatly arranged on a white surface.

- Main Motor Unit (with Dustbin and HEPA Filter)
- Adjustable Extension Stick
- Vacuum Head (Floor Brush)
- 2-in-1 Pet Tool / Upholstery Brush
- Long Crevice Tool
- Wall Mount
- Power Adapter
- User Manual
- Additional HEPA Filter (if included)

### 3. ASSEMBLY AND SETUP

Follow these steps to assemble your Cuzmok Cordless Stick Vacuum Cleaner.

#### Quick Installation Steps

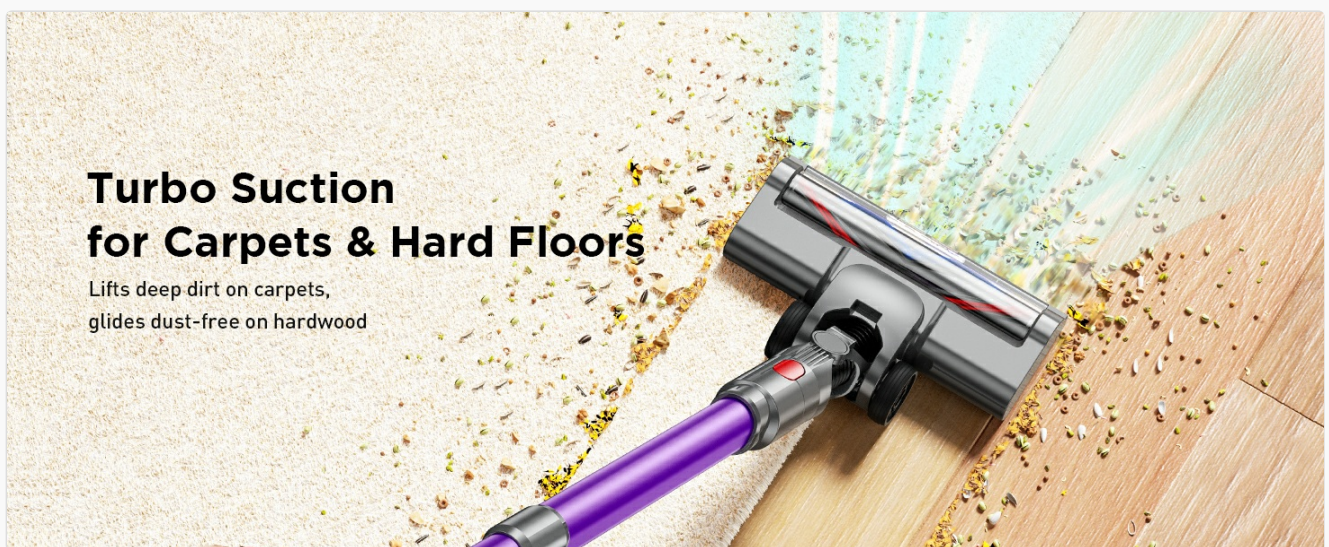


Image: A visual guide showing four steps for quick assembly: 1. Attaching the nozzle to the extension tube. 2. Connecting the extension tube to the main motor unit. 3. Locking the dustbin in place. 4. Inserting the detachable battery pack.

1. **Attach the Nozzle:** Securely click the desired cleaning nozzle (e.g., floor brush) onto the end of the adjustable

extension stick.

2. **Connect Extension Tube:** Seamlessly connect the other end of the extension tube to the main motor unit until it clicks into place.
3. **Lock Dustbin:** Ensure the dustbin is properly aligned and locked into the main motor unit. Press down until tabs click securely. Twist slightly to check for gaps. Proper alignment prevents air leaks and ensures full suction.
4. **Insert Battery:** Insert the detachable battery pack into the designated slot on the main motor unit for instant power.

## Charging the Battery

Before first use, fully charge the battery. The detachable battery can be charged while attached to the vacuum or separately.

- Connect the power adapter to the charging port on the battery or the main unit.
- Plug the adapter into a wall outlet.
- The LED display will indicate charging status. A full charge typically takes approximately 3-4 hours.

# Breathe Freely, 360° Clean

90° & 180° Adjustable Purification for Total Air Coverage



Image: The vacuum cleaner is shown mounted on a wall charging station, while its detachable battery is also shown charging independently on a nearby table, demonstrating flexible charging options.

## Wall Mount Installation (Optional)

The included wall mount allows for convenient storage and charging.

- Choose a suitable location near a power outlet.
- Mark the drilling points for the wall mount.
- Drill holes and insert wall anchors (if necessary).
- Secure the wall mount to the wall using screws.

- Hang the vacuum cleaner on the mount for storage and charging.

## 4. OPERATING INSTRUCTIONS

Your Cuzmok Cordless Stick Vacuum Cleaner is designed for versatile cleaning across various surfaces.

### Power On/Off and Suction Modes

- Press the power button to turn the vacuum on or off.
- Use the mode selection button to cycle through the available suction modes:
  - **Eco Mode (Low):** For light cleaning and extended runtime (up to 50 minutes).
  - **Auto Mode (Medium):** Balanced power for everyday cleaning (approx. 35 minutes).
  - **Boost Mode (High):** Maximum suction for stubborn dirt and deep cleaning (approx. 22 minutes).
- The LED display provides real-time updates on battery life and current suction mode.



Image: A woman operates the Cuzmok vacuum cleaner on a hardwood floor, with a dog observing. The image highlights the vacuum's powerful suction, ergonomic design, lightweight nature, and an LED display showing battery percentage and mode. The operational noise level is indicated as  $\leq 76$ dB.

### Using Attachments

The vacuum comes with versatile attachments for different cleaning needs.

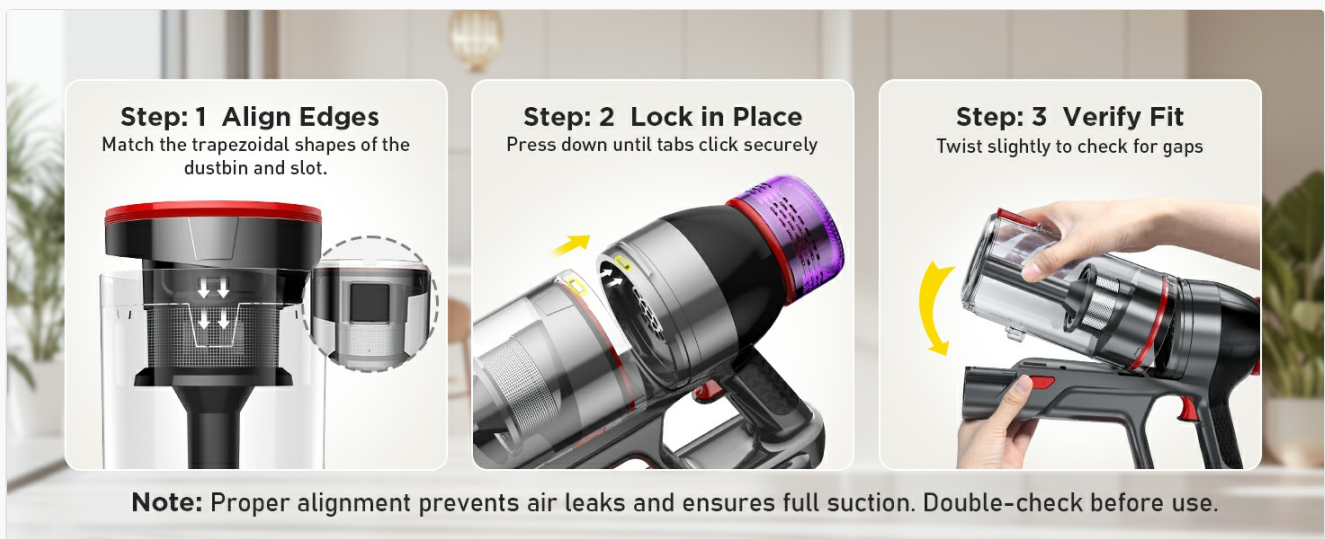


Image: A collage demonstrating the versatility of the vacuum's attachments: the floor brush cleaning a floor, the 2-in-1 upholstery brush cleaning a sofa with a cat, and the long crevice tool cleaning a car interior.

- **Floor Brush:** Ideal for cleaning hardwood floors, carpets, and low-pile rugs. Its design allows for 90° and 180° adjustable movement for thorough cleaning.

### Quick & Easy Installation

Follow these simple steps to assemble your vacuum effortlessly:



**Step 01**  
Attach the nozzle with a secure click



**Step 02**  
Connect the extension tube seamlessly



**Step 03**  
Lock the dustbin in place for a secure fit



**Step 04**  
Insert the battery pack for instant power

Image: The vacuum cleaner's floor brush is shown with diagrams illustrating its ability to swivel 90 degrees vertically and 180 degrees horizontally, allowing for flexible cleaning around obstacles and under furniture.

- **2-in-1 Pet Tool / Upholstery Brush:** Features a retractable brush design. Use the brush for furniture, sofa crevices, curtains, and mattresses. Retract the brush for direct suction on pet hair and debris.



Image: A woman uses the handheld vacuum with the 2-in-1 pet tool attachment to clean a pet bed, effectively removing pet hair and debris.

- **Long Crevice Tool:** Designed for deep cleaning in narrow and hard-to-reach areas such as baseboards, corners, sofa crevices, window tracks, and car interiors.

# Versatile Attachments for All Cleaning Needs

One Device, Multiple Uses



Image: The vacuum cleaner is shown in handheld mode, using the long crevice tool to clean tight spaces within a car interior.

## Handheld Mode

The main motor unit can be detached from the extension stick to be used as a handheld vacuum for quick spot cleaning or car interiors.

## 5. MAINTENANCE

Regular maintenance ensures optimal performance and extends the lifespan of your vacuum cleaner.

### Emptying the Dustbin

Empty the dustbin regularly, especially when it reaches the MAX fill line, to maintain suction power.




Image: A diagram illustrating the 'one-touch emptying' feature of the vacuum's dustbin, showing debris being released directly into a waste bin without manual contact, emphasizing a hygienic and quick disposal process.


1. Ensure the vacuum is turned off.
2. Hold the main unit over a trash can.
3. Press the dustbin release button to open the bottom flap and empty the contents.
4. Close the flap securely until it clicks.

## Cleaning the Filters

The vacuum features a high-efficiency HEPA filter and a durable stainless steel mesh filter. Clean them regularly to maintain filtration efficiency.




02




### Long Crevice Tool


Designed for deep cleaning in narrow and hard-to-reach areas:




Baseboards  
& Corners



Sofa  
CreVICES



Window  
Tracks



Car Interiors

Image: A cutaway diagram illustrating the vacuum cleaner's dual filtration system, highlighting the HEPA filter and stainless steel mesh, designed to capture 99.99% of fine dust for cleaner air.

1. Turn off the vacuum and remove the dustbin.
2. Twist and pull out the HEPA filter and the stainless steel mesh filter.
3. Tap the filters gently to remove loose dust.
4. Rinse the filters under cold running water until the water runs clear. Do not use detergent.
5. Allow the filters to air dry completely for at least 24 hours before reassembling. Do not use a dryer or direct heat.
6. Reinsert the dry filters and reattach the dustbin.

## Cleaning the Brush Head

Regularly inspect and clean the brush head to prevent hair tangling and ensure smooth performance.

1. Turn off the vacuum and detach the floor brush.
2. Use a coin or screwdriver to unlock the brush roll cover.
3. Remove the brush roll.
4. Use scissors or the included cleaning tool to cut and remove any tangled hair or debris from the brush roll.
5. Clean any debris from the brush roll housing.
6. Reinsert the brush roll and secure the cover.

## 6. TROUBLESHOOTING

If you encounter any issues with your vacuum cleaner, refer to the following table for common problems and solutions.

Problem	Possible Cause	Solution
Vacuum does not turn on	Battery not charged Battery not properly installed	Charge the battery fully Ensure battery is securely clicked into place
Low suction power	Dustbin full Filters clogged Brush roll tangled Blockage in nozzle/tube	Empty dustbin Clean and dry filters Clean brush roll Check for and remove any blockages
Brush roll not spinning	Brush roll tangled Brush roll motor issue	Clean brush roll of hair/debris Contact customer support if issue persists
Vacuum stops suddenly	Battery depleted Overheating protection activated	Recharge battery Turn off vacuum, allow to cool for 30 minutes, then restart
Unusual noise	Blockage Damaged component	Check for and remove blockages Contact customer support

If the problem persists after trying these solutions, please contact Cuzmok customer support.

## 7. SPECIFICATIONS

Feature	Specification
Brand	Cuzmok
Model Name	Cordless Stick Vacuum (TV106S)
Color	Purple
Wattage	550 watts
Motor Horsepower	0.735455 horsepower
Battery Life	Up to 50 minutes (Eco Mode)
Battery Capacity	2600mAh (Detachable)
Filter Type	HEPA Filter, Stainless Steel Mesh
Dustbin Capacity	0.75 Liters
Noise Level	76 dB
Product Dimensions	17.5"L x 7.28"W x 9.45"H
Item Weight	5.5 pounds
Number of Speeds	3
Recommended Uses	Car, Hardwood Floor, Pet Hair, Furniture, Low Pile Carpet
Manufacturer	SuZhou Onesure Electric Appliances Technology Co., Ltd
UPC	722385437133

## 8. WARRANTY INFORMATION

---

Specific warranty details for the Cuzmok Cordless Stick Vacuum Cleaner are typically provided with your purchase documentation. Please refer to the warranty card or contact Cuzmok customer support for detailed information regarding warranty coverage, terms, and conditions.

## 9. CUSTOMER SUPPORT

---

For any questions, assistance, or troubleshooting not covered in this manual, please contact our customer service team.

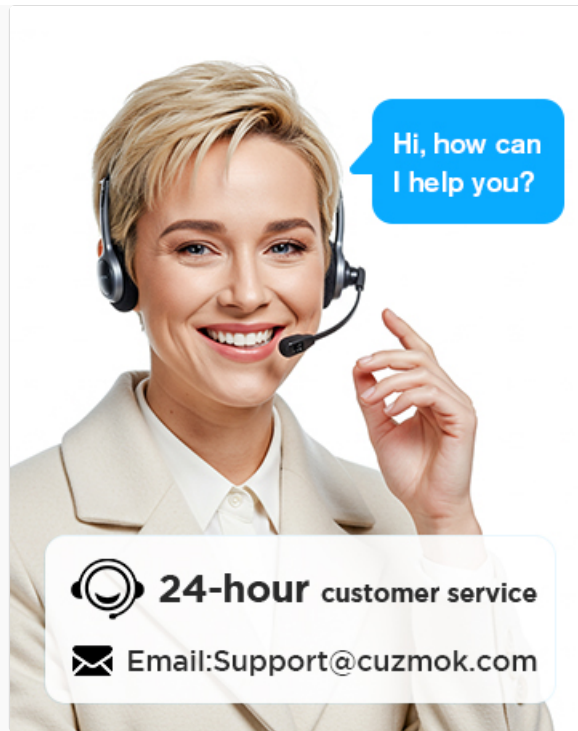


Image: A friendly customer service representative wearing a headset, with text indicating '24-hour customer service' and the email address 'Support@cuzmok.com'.

- **Email:** Support@cuzmok.com
- Our customer service team is available to assist you with product inquiries, technical support, and warranty claims.