

[Manuals.plus](#) /

› [Xininyia](#) /

› Instruction Manual for Xininyia Magnetic Charging Cable

Xininyia Magnetic Charging Cable

Instruction Manual

Product: 2-Pack Magnetic Charging Cable for Senbono Smart Glasses Charger

Brand: Xininyia

Model: Magnetic Charging Cable

1. PRODUCT OVERVIEW

This manual provides essential information for the safe and efficient use of your Xininyia Magnetic Charging Cables for Senbono Smart Glasses. These cables are designed for reliable and fast charging, featuring robust magnetic connections and built-in safety mechanisms.

What's in the Box

- 2 x Magnetic Charging Cables (60cm length each)

Key Features

- **Efficient Fast Charging:** Advanced technology ensures stable current and voltage output for quick charging.
- **Strong Magnetic Design:** Features a pure copper probe with strong magnetic power for secure attachment to your smart glasses.
- **Short-Circuit Protection:** Multiple protection mechanisms, including over-voltage and over-current protection, prevent battery overheating and damage.
- **Stable and Durable:** Constructed from ABS material and flexible PVC, tested for over 5000 bends.
- **Portable and Eco-Friendly:** Lightweight and compact design for easy portability, with an efficient conversion circuit to minimize energy waste.



Figure 1: Overview of the Xininyia Magnetic Charging Cables and compatible smart glasses.

2. SETUP

Setting up your magnetic charging cable is straightforward. Ensure your Senbono Smart Glasses are powered off before connecting the charger.

1. Locate the charging ports on your Senbono Smart Glasses. These are typically small, recessed magnetic contacts on the temples of the glasses.
2. Align the magnetic end of the charging cable with the charging contacts on your smart glasses. The strong magnetic design will automatically snap the connector into place when correctly aligned.
3. Connect the USB-A end of the charging cable to a compatible USB power source, such as a wall adapter, computer USB port, or power bank.

Strong Adsorption



Figure 2: The magnetic connection ensures easy and secure attachment to the smart glasses.

3. OPERATING INSTRUCTIONS

Once connected, the charging process will begin automatically. The smart glasses typically have an indicator light to show charging status.

- Ensure the magnetic connection is firm and stable. A loose connection may prevent proper charging.
- Monitor the charging indicator on your Senbono Smart Glasses to confirm charging is active.
- Disconnect the cable once the smart glasses are fully charged to prolong battery life.
- The cable supports 2-in-1 magnetic charging, meaning both charging ports on the smart glasses can be connected simultaneously without distinguishing between left and right.

2-in-1 Magnetic Charging

Two Charging ports do not distinguish between left and right



Figure 3: The cable allows for simultaneous charging of both sides of the smart glasses.

4. MAINTENANCE

Proper care will extend the life of your charging cables.

- **Cleaning:** Gently wipe the cable and magnetic contacts with a dry, soft cloth to remove dust or debris. Do not use liquid cleaners.
- **Storage:** Store the cables in a cool, dry place away from direct sunlight and extreme temperatures. The flexible PVC cable is designed for easy rolling and storage.
- **Handling:** Avoid sharp bends or excessive pulling on the cable, especially near the connectors, to prevent internal wire damage.
- **Safety:** Do not attempt to disassemble or modify the cable. Keep out of reach of children.

5. TROUBLESHOOTING

If you encounter issues with your charging cable, try the following steps:

- **Not Charging:**

- Ensure the magnetic connection is secure and clean.
- Try a different USB power source (e.g., another wall adapter, a different USB port on your computer).
- Verify that your Senbono Smart Glasses are functioning correctly and not experiencing a separate issue.

- **Slow Charging:**

- Ensure the power source provides sufficient output (e.g., a standard 5V USB port).
- Check for any debris on the magnetic contacts that might impede optimal connection.

- **Cable Damage:**

- Inspect the cable for visible signs of damage, such as fraying, cuts, or bent connectors. Discontinue use if damaged.

If the problem persists after trying these steps, please contact customer support.

6. SPECIFICATIONS

Feature	Detail
Product Name	Magnetic Charging Cable for Senbono Smart Glasses
Brand	Xininyia
Cable Length	60 cm (each cable)
Connectivity Technology	USB
Connector Type	USB Type A (input), Magnetic (output)
Compatible Devices	Senbono Smart Glasses
Included Components	2 x Magnetic Charger
Material	ABS, Flexible PVC, Pure Copper
Safety Certifications	ROHS/CE Certified (as per product description)

Detail Display

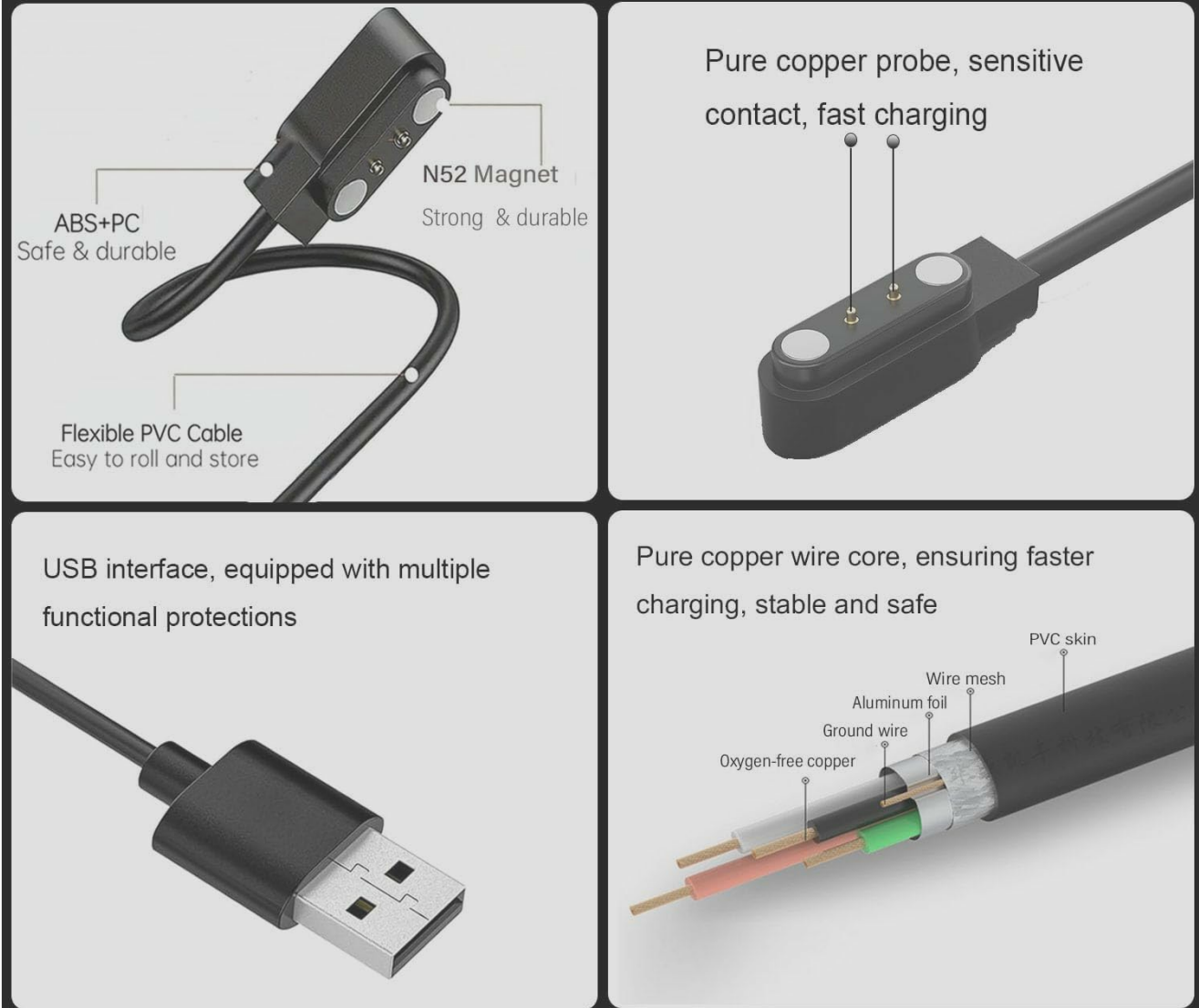


Figure 4: Detailed view of the cable's construction and internal components.

7. WARRANTY AND SUPPORT

For product support, warranty information, or to report any issues, please contact Xininyia customer service through the retailer where the product was purchased. Please have your purchase details ready when contacting support.

Manufacturer: Xinya