



Manuals.plus /

› [Xininyia](#) /

› [Xininyia Fit Cloud Pro Smart Watch Charger Instruction Manual](#)

## Xininyia Fit Cloud Pro Smart Watch Charger

# Xininyia Fit Cloud Pro Smart Watch Charger Instruction Manual

Brand: **Xininyia** | Model: **Fit Cloud Pro Smart Watch Charger**

## 1. INTRODUCTION

---

This manual provides essential information for the safe and effective use of your Xininyia Fit Cloud Pro Smart Watch Charger. This package includes two magnetic USB charging cables, designed for smartwatches with a 2.8mm charging port spacing. Please note that the two cables have opposite magnetic polarities (Model A and Model B), ensuring compatibility with a wider range of smartwatches. Only one of the chargers in the pack will fit your specific device.



Image 1.1: Xinyinia Fit Cloud Pro Smart Watch Chargers (Black and White)

## 2. PRODUCT FEATURES

- **Dual Polarity Design:** Includes two cables with opposite magnetic polarities (Model A and Model B) to ensure compatibility with various smartwatch models.
- **Efficient Fast Charging:** Advanced technology and optimized circuit design provide stable current and voltage output for quick charging.
- **Strong Magnetic Connection:** Built-in pure copper probes with powerful N52 magnets ensure a secure and reliable connection to your smartwatch.
- **Comprehensive Protection:** Features multiple safeguards including short-circuit protection, over-voltage protection, and over-current protection to prevent damage to your device and the charger.
- **Durable and Portable:** Constructed with ABS+PC materials and a flexible PVC cable for durability. Its lightweight design makes it ideal for travel.
- **Universal USB Interface:** Equipped with a standard USB-A interface for broad compatibility with various power sources.

The two charging cables have different magnetic poles,  
**Note:** Only one of the charger in the pack will fit your device.

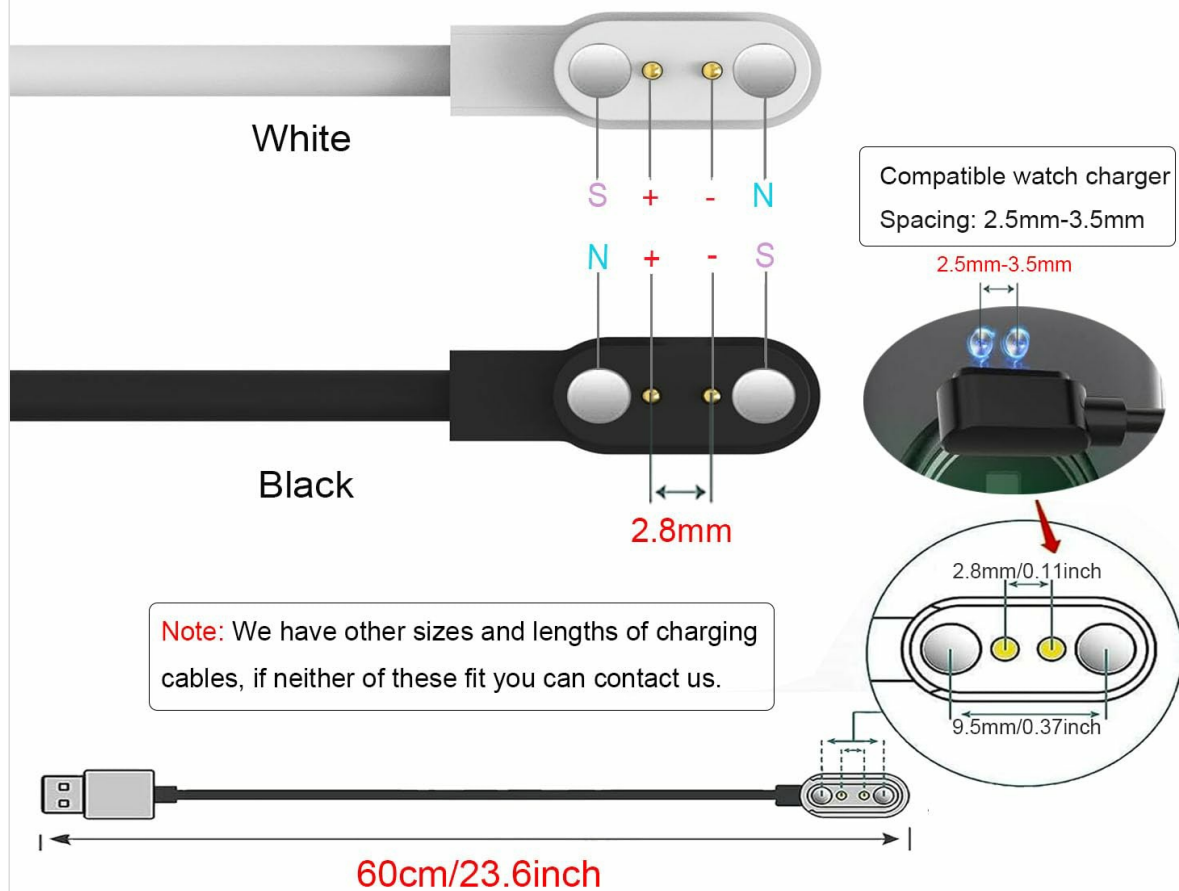


Image 2.1: Charger Component Details

### 3. SETUP AND COMPATIBILITY

Before charging, it is crucial to identify which of the two provided cables is compatible with your smartwatch. Both cables feature a 2.8mm pin spacing, but their magnetic polarities differ.

1. **Check Pin Spacing:** Ensure your smartwatch's charging contacts have a 2.8mm spacing.
2. **Test Magnetic Polarity:** Gently bring one of the charger heads close to your smartwatch's charging area. If the magnets repel, the polarity is incorrect. Try the other cable. The correct cable will attract and securely attach to your smartwatch.
3. **Visual Confirmation:** Refer to the diagram below to understand the different magnetic pole configurations (S/N and +/-) and pin spacing.



Image 3.1: Magnetic Polarity and Pin Spacing Diagram

## 4. OPERATING INSTRUCTIONS

---

Follow these steps to charge your smartwatch:

1. **Connect to Power Source:** Plug the USB-A end of the compatible charging cable into a suitable USB power source. This can be a computer, laptop, power bank, or a wall charger (5V/1A recommended).
2. **Attach to Smartwatch:** Align the magnetic charging pins of the cable with the charging contacts on your smartwatch. The strong magnetic design will help secure the connection.
3. **Verify Charging:** Once connected, your smartwatch should display a charging indicator. If the magnets repel or the watch does not show a charging status, adjust the cable's orientation or try the other cable from the pack.

# Safe and Fast Charging



## Build-in Short-circuit protection IC

Don't worry about your watch being burned out due to excessive current



Image 4.1: Charging Connection Notes

# Charging Notes



1. If the charging magnets repel, the watch will not charge.

2. Just need to change directions, align the charging pins and keep the magnet attached to the watch.

3. Successfully connected and charging.

Note: If the magnet(N/S) attaches but doesn't charge, it may be that the poles(+/-) of the charging pin don't match with this charger, please contact us, we have other chargers available!

Image 4.2: Convenient Charging Options

## 5. MAINTENANCE

- **Cleaning:** Keep the magnetic charging pins and your smartwatch's charging contacts clean and free of dust or debris. Use a soft, dry cloth for cleaning.
- **Storage:** Store the charging cables in a cool, dry place away from direct sunlight and extreme temperatures.
- **Handling:** Avoid bending or twisting the cable excessively, as this can damage the internal wiring. Do not pull the cable by the cord; always grasp the USB connector when unplugging.

## 6. TROUBLESHOOTING

- **Smartwatch Not Charging:**
  - Ensure the magnetic pins are correctly aligned with your smartwatch's charging contacts.
  - If the magnets repel, try the other charging cable from the pack, as they have different polarities.
  - Check if the USB power source is functioning correctly. Try a different USB port or adapter.
  - Clean the charging pins on both the cable and the smartwatch to ensure good contact.

- **Slow Charging:**

- Ensure you are using a 5V/1A (or higher) power adapter for optimal charging speed.
- Avoid charging through unpowered USB hubs or older computer USB ports, which may provide insufficient power.

If issues persist, please refer to the contact information for customer support.

## 7. SPECIFICATIONS

Feature	Detail
Connector Type	USB Type A
Cable Type	USB
Compatible Devices	Smart Watch
Special Feature	Shock-resistant
Compatible Phone Models	No Compatible Phone Models (for charger use)
Connector Gender	Male-to-Male
Number of Pins	2
Unit Count	2.0 Count
Color	Black & White
Specification Met	CE, RoHS
Indoor Outdoor Usage	Indoor

## 8. SAFETY INFORMATION

- Do not expose the charger to water or excessive moisture.
- Avoid using the charger in extremely hot or cold environments.
- Keep the charger out of reach of children and pets.
- Do not attempt to disassemble or modify the charger.
- If the charger appears damaged, discontinue use immediately.
- The charger includes built-in short-circuit protection to prevent damage from excessive current.

# Detail Display

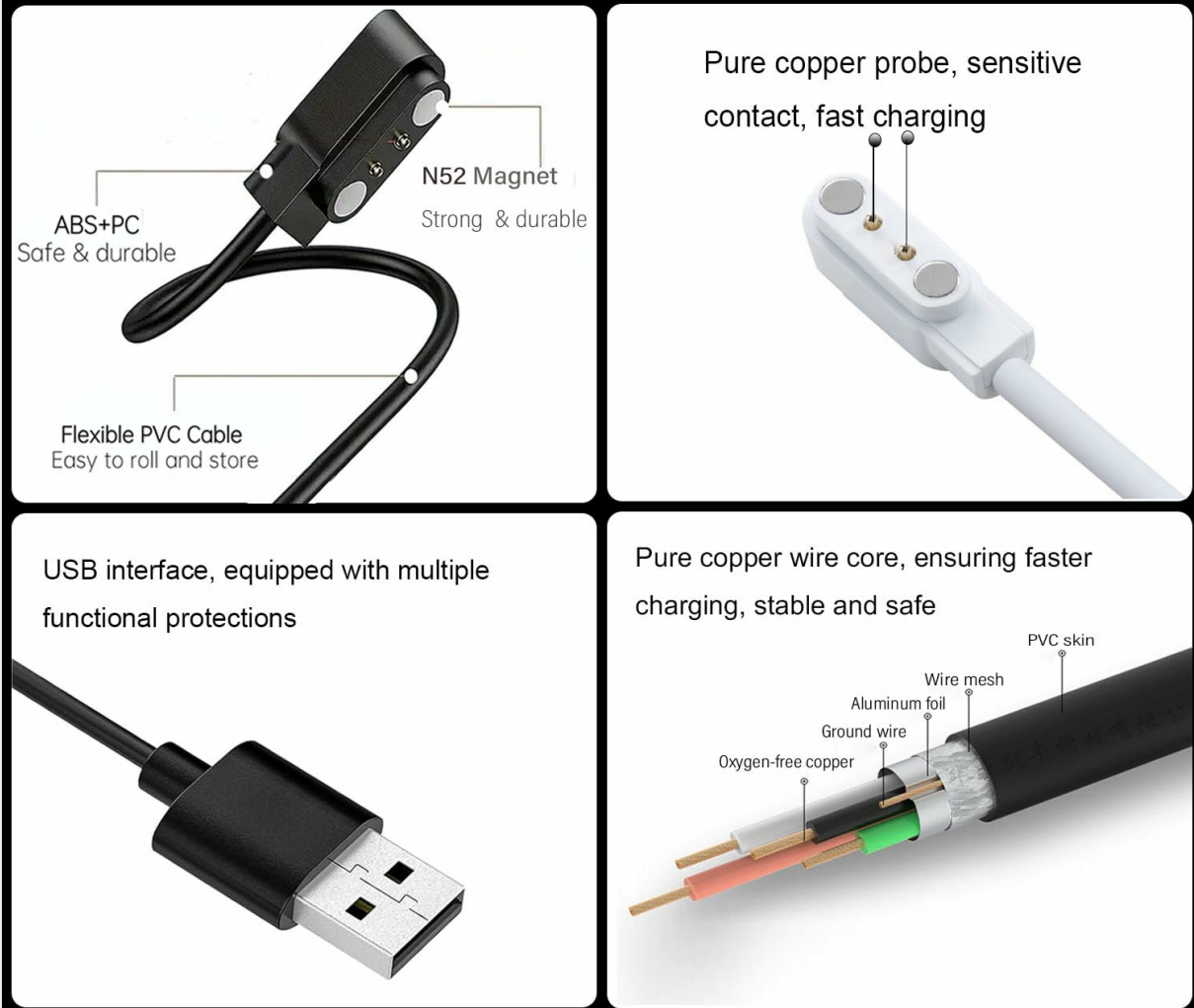


Image 8.1: Safe and Fast Charging Features

## 9. WARRANTY AND SUPPORT

For warranty information, returns, or technical support, please refer to the product's purchase page or contact the seller directly. Keep your proof of purchase for any warranty claims.