

Tonton GM-W-1P-US

Tonton Gutter Mount for Security Camera and Solar Panel

Model: GM-W-1P-US

INTRODUCTION

The Tonton Gutter Mount (Model GM-W-1P-US) provides a secure, no-drill mounting solution for compatible outdoor security cameras and solar panels. This manual outlines the installation process, compatibility requirements, features, and specifications to ensure proper use and optimal performance.

COMPATIBILITY

This gutter mount is designed for devices with a standard 1/4"-20 threaded screw hole and is intended for use with standard metal gutters. Please review the following compatibility details before installation:

- **Device Compatibility:** Supports cameras and solar panels with a standard 1/4"-20 threaded screw hole. It is not compatible with devices lacking this specific mount or those with proprietary mounting systems.
- **Gutter Compatibility:** Clamps securely onto standard metal gutters. It is not suitable for all gutter sizes, fences, vinyl siding, or non-standard structures. Verify your gutter thickness and available installation space prior to use.
- **Supported Brands & Models:** Compatible with a wide range of outdoor security cameras and solar panels, including but not limited to:
 - Arlo (Essential, Light, Ultra, Pro, Pro2, Pro/Pro2/Ultra/Pro3 Solar Panels, Go 2)
 - Ring (Stick Up Cam, Ring Solar Panel 1st & 2nd Gen Small, Doorbell **–Not** for Ring Super Solar Panel, Stick Up Cam Pro/Plus Battery/Plug-In/Solar, Spotlight Cam Plus/Pro Battery/Solar)
 - Eufy (Cam S3 Pro/3 (S330)/3C (S300)/2C Pro/2C/2 Pro/SoloCam S220/C210)
 - Wyze (Cam v4/v3 Pro/v3/Pan v3)
 - Reolink (1 & 2, Argus Pro/2)
 - Google Nest Cam (Battery)
 - Blink (Outdoor 4/3rd Gen/Mini 2, XT2, XT)
 - Tapo A200 (**Not** for Tapo A201)
 - ZUMIMALL, Noorio Solar Panels

Before You Buy – Compatibility Checklist:

- Your camera or solar panel has a standard 1/4"-20 threaded screw hole.
- Your gutter is a standard metal gutter (not vinyl siding, fence, or custom gutters).
- Your gutter thickness allows the clamp to tighten securely.
- This mount is intended for a camera or solar panel only, not both simultaneously.
- Brand names are for reference only, and not all models are supported.

Do NOT purchase if your device does not meet the above conditions.

Before You Buy – Compatibility Checklist

Please confirm ALL of the following before purchasing:

- 1. Your camera or solar panel has a standard 1/4"-20 threaded screw hole***
- 2. Your gutter is a standard metal gutter (not vinyl siding, fence, or custom gutters)***
- 3. Your gutter thickness allows the clamp to tighten securely***
- 4. This mount is intended for camera OR solar panel only, not both at the same time***
- 5. You understand that brand names are for reference only and not all models are compatible***

Do NOT purchase if your device does not meet the above conditions.



Image: Compatibility checklist for the Tonton Gutter Mount.

WHAT'S IN THE BOX

The Tonton Gutter Mount package includes the following components:

- 1 x Gutter Mount (White)
- 2 x Wing Butterfly Screws

Packing List

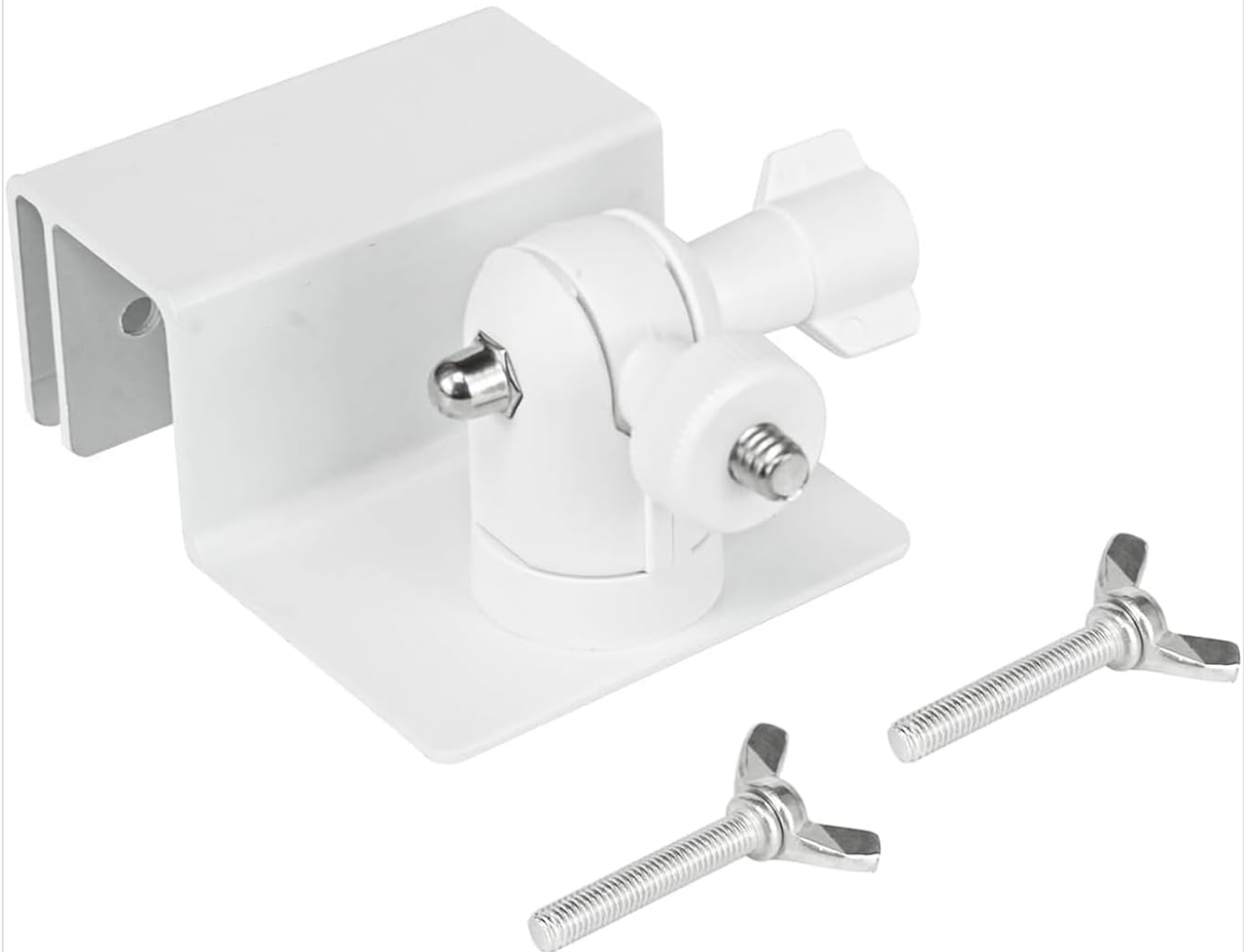


Image: The Tonton Gutter Mount and its included wing butterfly screws.

INSTALLATION GUIDE

The Tonton Gutter Mount offers a no-drill installation process, securing your camera or solar panel without damaging your property.

Installation Steps

1. **Attach Device:** Connect your security camera or solar panel to the mount's 1/4"-20 threaded screw. No tools are typically required for this step.
2. **Secure Device:** Use the flexible nut on the mount to firmly fix your camera or solar panel in place.
3. **Position Mount:** Place the gutter mount onto a standard metal gutter.
4. **Tighten & Fix:** Secure the mount to the gutter using the two wing butterfly screws. Ensure they are tightened sufficiently for a stable hold.

Easy Installation



1. No tools required connect camera.



2. Flexible nut to fix camera.

3. Adjustable bolt to adjust the perfect angle.

4. Tighten and fix the supporting object.

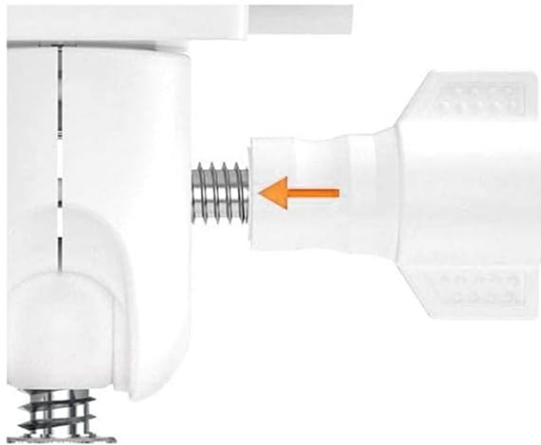


Image: Visual guide for connecting the camera and securing the mount.

Installation Steps



1. No tools required connect camera.

2. Flexible nut to fix camera.

3. Adjustable bolt to adjust the perfect angle.

4. Tighten and fix the supporting object.

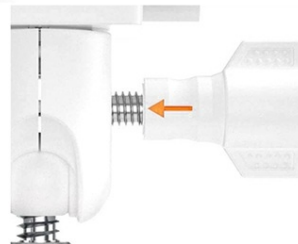


Image: Step-by-step illustration of the installation process.

Up & Down Mounting Design

The mount offers versatile installation options to accommodate different camera designs:

- **Up Version:** Suitable for cameras with a screw hole located on the bottom (e.g., Google Nest, Wyze, Simplisafe).
- **Down Version:** Ideal for cameras with a screw hole on the back (e.g., Ring, Blink, Eufy, Arlo).

Down or Up Adjustable

Waterproof and Rust Resistant

Install Upwards

Compatible with cameras that have screw holes on the bottom, such as Nest, Wyze, Simplisafe, and more.



Install Down

Compatible with cameras that have screw holes on the back, such as Ring, Blink, Eufy, Arlo, and more.

*Before making a purchase, please refer to the product description to determine which version of the Gutter Mount is compatible with your camera.

Image: Illustration of the 'Up' and 'Down' mounting configurations.

Adjustability

The mount features a 360° swivel and 180° tilt capability, allowing you to precisely adjust the angle of your camera or solar panel for optimal coverage or sunlight exposure.

Your browser does not support the video tag.

Video: This video demonstrates the installation and adjustability of the Tonton Gutter Mount for security cameras and solar panels.

FEATURES

- **Sturdy & Weatherproof:** Constructed from heavy-duty, rust-proof stainless steel and ABS plastic, this mount is designed to withstand various extreme weather conditions, including rain, snow, and strong winds.
- **Secure & Stable Mounting:** The robust clamping mechanism ensures your camera or solar panel remains firmly in place, preventing misalignment or accidental dislodgement due to environmental factors.



Image: A security camera securely mounted on a gutter using the Tonton Gutter Mount.

SPECIFICATIONS

Color	White
Material	Alloy Steel, Aluminum
Item Dimensions (L x W x H)	3.94 x 3.94 x 3.94 inches
Item Weight	0.11 Kilograms
Model Number	GM-W-1P-US
Mounting Type	Gutter Mount
Finish Type	Powder Coated



Image: Detailed dimensions of the Tonton Gutter Mount.

TROUBLESHOOTING

- **Issue: Camera/Solar Panel is not stable or moves in wind.**
Solution: Ensure both wing butterfly screws are fully tightened to secure the mount to the gutter. The mount's adjustable ball joint should also be tightened to prevent movement of the attached device.
- **Issue: Difficulty tightening wing butterfly screws.**
Solution: Applying a small amount of silicone grease to the threads of the wing screws can facilitate smoother tightening.
- **Issue: Night vision is affected by light reflection from the gutter.**
Solution: Adjust the camera's tilt and swivel to minimize light reflection from the gutter surface. Experiment with different angles to find the optimal position for clear night vision.

WARRANTY AND SUPPORT

Tonton is committed to providing quality products and customer satisfaction. Your gutter mount comes with the following:

- **1-Year Replacement Warranty:** In case of product defects, Tonton offers a 1-year replacement policy. Repairs are not offered; instead, a new unit will be provided.
- **30-Day Money Back Guarantee:** If you are not satisfied with your purchase, you may return it within 30 days for a full refund.
- **24/7 Online Support:** Dedicated online support is available around the clock to assist with any questions or issues you may encounter.

- **No Monthly Fees:** Enjoy the full functionality of your Tonton Gutter Mount without any recurring subscription costs.

For further assistance or to contact support, please visit the official Tonton store: [Tonton Official Store](#)



Image: Scan QR code for Tonton support.