



Manuals.plus /

› Admiral Car Care /

› Admiral Car Care Touch Up Paint Kit User Manual

Admiral Car Care BMW1093

Admiral Car Care Touch Up Paint Kit

MODEL: BMW1093 - MINERAL GREEN METALLIC (A70)

Introduction

This manual provides detailed instructions for the proper use and maintenance of your Admiral Car Care Touch Up Paint Kit. This kit is designed for automotive scratch and chip repair, specifically formulated for BMW vehicles with Mineral Green Metallic (A70) paint code. Following these instructions will help you achieve optimal results and maintain the aesthetic appeal of your vehicle.

Product Contents

Your Admiral Car Care Touch Up Paint Kit includes the following components:

- Color-Matched Paint (Mineral Green Metallic A70)
- German Patented Cleaning Solution
- Premium Wax and Paste
- Gloves
- Sponge
- Brushes
- Microfiber Cloth
- Detailed Instructions Manual (This manual)



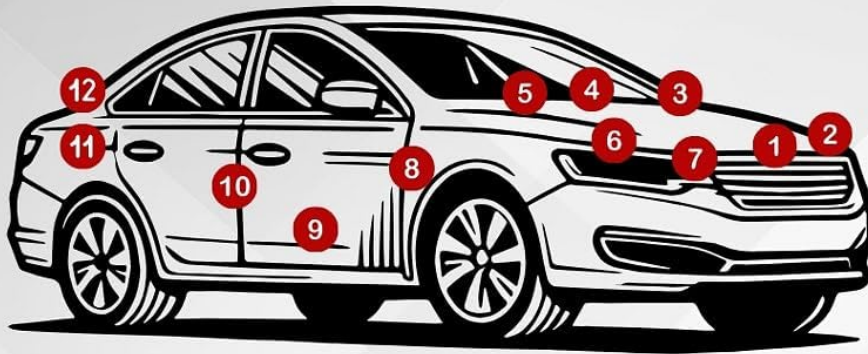
Image: The complete Admiral Car Care Touch Up Paint Kit, showing bottles of paint, cleaning solution, wax, paste, brushes, sponge, and microfiber cloths.

Setup

Before beginning the application process, ensure proper preparation:

1. **Vehicle Preparation:** Ensure the vehicle surface is clean, dry, and free of dirt, dust, and wax. Wash the area thoroughly and dry it completely.
2. **Safety Precautions:** Wear the provided gloves to protect your hands. Work in a well-ventilated area. Avoid direct sunlight during application.
3. **Shake Paint Bottle:** Vigorously shake the color-matched paint bottle for at least 30 seconds to ensure proper pigment mixing.

FIND YOUR COLOR CODE



- LOCATIONS:**
- 1 Core Support
 - 2 Battery Support
 - 3 Glove Box
 - 4 Firewall
 - 5 Cowl
 - 6 Strut Tower
 - 7 Hood
 - 8 Door Pillar
 - 9 Door Panel
 - 10 Door Jamb
 - 11 Trunk
 - 12 Trunk Lid

| | | | | | |
|--------------|---------------|-------------|-------------|-------------|-----------------|
| Acura: | 10 | Hyundai: | 1, 4, 10 | Oldsmobile: | 3, 11, 12 |
| Alfa Romero: | 11, 12 | Infiniti: | 4, 9, 10 | Plymouth: | 4, 6 |
| Audi: | 11, 12 | Isuzu: | 3, 4, 10 | Pontiac: | 3, 9, 11, 12 |
| BMW: | 6, 7 | Jaguar: | 10 | Porche: | 3, 4, 12 |
| Buick: | 3, 9, 11, 12 | Jeep: | 1, 4, 10 | Saab: | 1, 3, 4, 10, 12 |
| Cadillac: | 3, 10, 11, 12 | Kia: | 10 | Saturn: | 3, 10, 12 |
| Chevrolet: | 3, 5, 11, 12 | Land Rover: | 1, 10 | Scion: | 10 |
| Chrysler: | 1, 4, 6, 10 | Lexus: | 10 | Smart: | 4, 10, 12 |
| Dodge: | 1, 4, 6, 10 | Lincoln: | 10 | Subaru: | 6, 10 |
| Fiat: | 4, 9 | Mazda: | 4, 10 | Suzuki: | 1, 3, 4, 9 |
| Ford: | 10 | Mercedes: | 1, 7, 10 | Tesla: | 10 |
| GMC: | 3, 10 | Mercury: | 10 | Toyota: | 10 |
| Genesis: | 10 | Mini: | 4, 6 | Volkswagen: | 11, 12 |
| Honda: | 4, 10 | Mitsubishi: | 1, 4, 10 | Volvo: | 1, 4, 6, 10 |
| Hummer: | 3, 10 | Nissan: | 1, 4, 8, 10 | | |

Image: A diagram illustrating common locations for vehicle paint codes on various car models.

Operating Instructions (Application)

Follow these steps for optimal results when applying the touch-up paint:

1. **Clean the Damaged Area:** Use the German Patented Cleaning Solution and a clean microfiber cloth to thoroughly clean the scratch or chip. Ensure all contaminants are removed.

HOW TO APPLY?



STEP 1



STEP 2



STEP 3



STEP 4

Image: Step 1 of the application process, showing a hand cleaning a car surface with a bottle of cleaning solution and a microfiber cloth.

2. **Apply Color-Matched Paint:** Using one of the provided brushes, apply a thin, even coat of the color-matched paint directly onto the scratch or chip. For deeper scratches, multiple thin coats may be necessary. Allow each coat to dry for 10-15 minutes before applying the next.

YOU CAN FIX IT BY YOURSELF



BEFORE



BEFORE



AFTER



AFTER

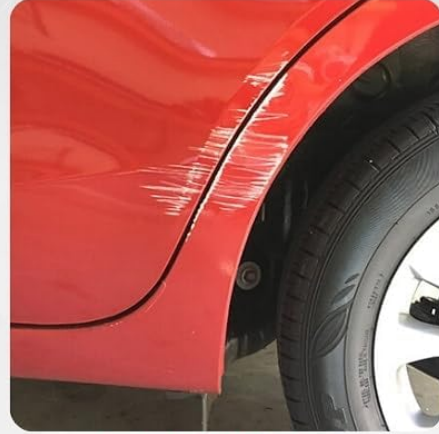
Image: Step 2 of the application process, illustrating a hand applying touch-up paint to a car surface using a small brush.

- 3. Apply Wax and Paste:** Once the paint is completely dry (allow at least 24 hours for full cure), apply a small amount of the Premium Wax and Paste to the repaired area using the sponge. Gently buff the area with a clean microfiber cloth to blend the repair and restore shine.

YOU CAN FIX IT BY YOURSELF



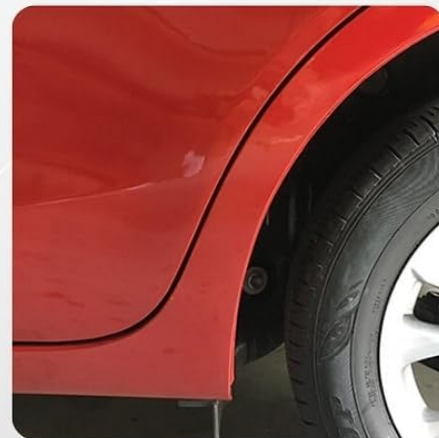
BEFORE



BEFORE



AFTER



AFTER

Image: Step 3 of the application process, showing a hand applying wax and paste to the car surface with a sponge.

4. **Final Buffing:** For a flawless finish, gently buff the entire repaired area with a clean, dry microfiber cloth.



Image: Step 4 of the application process, depicting a hand performing final buffing on the car surface with a microfiber cloth.

Before & After Examples

**SMALL TOUCH
BIG IMPACT**

With the convenience of Admiral™ Touch Up paint, you can maintain your vehicle's aesthetic appeal and protect its resale value.

Image: A split image showing a car bumper with visible scratches before repair and the same bumper after the touch-up paint application, demonstrating a smooth finish.

WHAT'S IN THE BOX?

BASIC KIT

- Covers up to 50 stone chips
- 25ml Color-Matched Color
- 50ml Cleaning Solution
- Premium Carnauba Wax & Paste
- Professional Application Tools
- High-Quality Microfiber Cloths
- Precision Paint Brushes
- Nitrile Gloves & Polishing Material
- Detailed Instructions Manual

PLUS KIT

- Professional Application Tools
- High-Quality Microfiber Cloths
- Precision Paint Brushes
- Nitrile Gloves & Polishing Materials
- Detailed Instructions Manual
- Covers up to 100 stone chips
- 50ml Color-Matched Paint
- 50ml Cleaning Solution
- Premium Carnauba Wax & Paste

PRO KIT

- Covers up to 200 stone chips
- 100ml Color-Matched Paint
- 100ml Cleaning Solution
- Premium Carnauba Wax & Paste
- Professional Application Tools
- High-Quality Microfiber Cloths
- Precision Paint Brushes
- Nitrile Gloves & Polishing Materials
- Detailed Instructions Manual

Image: A split image displaying a car fender with deep scratches before treatment and the same fender after the touch-up paint application, showing significant improvement.

Maintenance

To ensure the longevity of your repair and the kit components:

- Store paint and solutions in a cool, dry place away from direct sunlight.
- Ensure bottle caps are tightly sealed after each use to prevent drying.
- Clean brushes thoroughly with a suitable solvent after use to maintain their quality.
- Regularly wash and dry the microfiber cloth to keep it free of debris.

Troubleshooting

| Problem | Possible Cause | Solution |
|-----------------------|--|---|
| Paint does not match | Insufficient shaking | Shake the paint bottle vigorously for at least 30 seconds before application. |
| Uneven finish | Too much paint applied / Dirty surface | Apply thin coats. Ensure the surface is thoroughly clean before application. |
| Paint peeling/flaking | Improper surface preparation | Ensure the surface is completely clean, dry, and free of wax or grease before applying paint. |
| Paint is too thick | Exposure to air / Old product | Ensure the cap is tightly sealed after use. If the product is old, consider replacing it. |

Product Specifications

| Feature | Detail |
|---------------------------|--|
| Brand | Admiral Car Care |
| Color | Mineral Green Metallic (A70) |
| Finish Type | Semi-Gloss |
| Size | 3.4 Fl Oz (Pack of 1) |
| Item Volume | 3.4 Fluid Ounces |
| Special Feature | Chip Resistant, Crack Resistant, Fade Resistant, Fast-Drying |
| Unit Count | 3.4 Fluid Ounces |
| Paint Type | Acrylic |
| Specific Uses For Product | Exterior |
| Surface Recommendation | Metal |
| Color Code | A70 |
| Manufacturer | Admiral Car Care |
| Model Number | BMW1093 |

Warranty and Support

For information regarding product warranty, please refer to the manufacturer's official website or contact Admiral Car Care customer support directly.

For further assistance or inquiries, please visit the [Admiral Car Care Store on Amazon](#).