



[Manuals.plus](#) /

› [FLORICH](#) /

› FLORICH Cooling Car Seat Cover Instruction Manual

FLORICH FL-CSeat-TF

FLORICH Cooling Car Seat Cover

INSTRUCTION MANUAL

INTRODUCTION

Thank you for choosing the FLORICH Cooling Car Seat Cover. This product is designed to enhance your driving comfort, especially during warm weather, by providing a ventilated seating experience. Equipped with powerful turbo fans and adjustable settings, it ensures a refreshing and quiet ride. This manual provides essential information for the proper installation, operation, and maintenance of your new cooling seat cover.



Image: The FLORICH Cooling Car Seat Cover in a car interior, illustrating the cooling airflow.

KEY FEATURES

- **Powerful Cooling:** Features 2 powerful turbo fans that rapidly circulate warm air away, providing instant cooling.
- **Quiet Operation:** Fans are designed to operate quietly, minimizing noise for a distraction-free driving environment.
- **Universal Compatibility:** Designed to fit 12V-24V vehicles, including cars, trucks, SUVs, and vans, making it suitable for both driver and passenger seats.
- **Integrated USB Port:** Includes a built-in USB port for convenient charging of phones or other devices.
- **3-Speed Adjustable Cooling:** Customize your comfort with low (green light), medium (blue light), and high (red light) cooling levels.
- **Automatic Shut-off:** The cushion automatically shuts down after 2 hours of continuous operation to conserve energy and ensure safety.
- **Premium Materials:** Constructed from luxurious napa leather and breathable mesh fabric for excellent ventilation and durability.

- **Enhanced Airflow:** Equipped with 33 larger air vents to evenly circulate cool air throughout the entire seat.
- **Ergonomic Design:** Provides excellent support and comfort, while enhancing the vehicle's interior aesthetics.
- **Storage Pockets:** Features 2 built-in storage pockets for convenient access to small items, helping keep your car organized.




Image: Visual representation of the dual turbo fans and key features of the seat cover.

360° SURROUND COOLING AIRFLOW

Prevents Sweat Buildup on Back & Hips



Image: Illustration of the 360-degree surround cooling airflow across the seat.



Durable
Nappa Leather

3D Breathable
Mesh Fabric

33 Powerful
Air Vents

2 Front
Pockets

Image: Details on the materials and design elements, including storage pockets.

UNIVERSAL DESIGN

Perfect Fit for 99% 12V&24V Vehicles



Image: Depiction of the universal design, fitting various vehicle types.

WHAT'S IN THE BOX

- Cooling Seat Cover
- Installation Accessories

SPECIFICATIONS

Attribute	Value
Brand	FLORICH
Model	FL-CSeat-TF

Attribute	Value
Color	Black
Fit Type	Universal Fit
Special Feature	Cooling, Ventilated
UPC	768781591154
Item Weight	3.74 pounds
Package Dimensions	20 x 10 x 6 inches
Recommended Uses	Car, Car Seat, SUV, Truck

SETUP AND INSTALLATION

Follow these simple steps to install your FLORICH Cooling Car Seat Cover:

1. **Attach Buckle to Headrest:** Securely attach the buckle to the headrest support rod of your car seat.
2. **Adjust Lumbar Buckle:** Adjust the buckle to ensure a snug fit around the lumbar area of the seat.
3. **Hang Bottom Hooks:** Hang the bottom hooks securely to prevent the cushion from shifting.

The bottom of the seat cover features silicone anti-slip particles to help keep the cooling seat pad firmly in place for a stable and secure fit.

EASY TO INSTALL



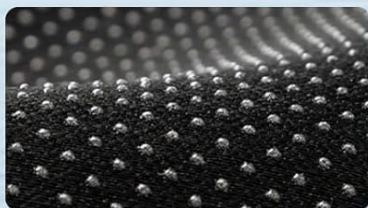
Attach the buckle to the headrest support rod



Adjust the buckle for a snug fit around the lumbar area



Hang the bottom hooks securely



Silicone anti-slip particles to keep the cushion in place



Image: Step-by-step guide for easy installation of the seat cover.

OPERATING INSTRUCTIONS

The FLORICH Cooling Car Seat Cover features a simple control for adjusting the cooling intensity:

- **Power On/Off:** Connect the seat cover to your vehicle's 12V-24V power outlet using the provided adapter. The unit will power on.
- **Adjusting Fan Speed:** Press the ventilation button to cycle through the cooling levels:
 - First press: Activates *Low Level* (indicated by a green light).
 - Second press: Switches to *Medium Level* (indicated by a blue light).
 - Third press: Switches to *High Level* (indicated by a red light).
 - Subsequent presses will cycle back to off or the next speed.
- **Automatic Shut-off:** For energy conservation and safety, the cooling seat cushion will automatically shut down after 2 hours of continuous operation without any manual input.



Image: Control interface for adjusting wind speeds and auto-off feature.

MAINTENANCE

To ensure the longevity and optimal performance of your FLORICH Cooling Car Seat Cover, please observe the following maintenance guidelines:

- **Cleaning:** Wipe the surface of the seat cover with a damp cloth and mild detergent. Do not immerse the product in water or use harsh chemical cleaners. Ensure the product is completely dry before use.
- **Storage:** When not in use for extended periods, store the seat cover in a cool, dry place away from direct sunlight and extreme temperatures.
- **Inspection:** Periodically check the power cord and connections for any signs of damage. If any damage is found, discontinue use and contact customer support.
- **Fan Vents:** Ensure the air vents are clear of obstructions (dust, debris) to maintain optimal airflow. You may gently vacuum the vents if necessary.

TROUBLESHOOTING

If you encounter any issues with your FLORICH Cooling Car Seat Cover, please refer to the following common troubleshooting steps:

- **No Power/Fans Not Working:**
 - Ensure the power adapter is securely plugged into the vehicle's 12V-24V outlet.
 - Check the vehicle's power outlet for functionality (e.g., by plugging in another device).
 - Verify that the power indicator light on the seat cover is on. If not, try pressing the power button.
 - Check the vehicle's fuse for the power outlet.
- **Weak Airflow:**
 - Ensure the air vents on the seat cover are not blocked by clothing, bags, or other items.
 - Increase the fan speed setting (Low, Medium, High).
 - Clean any dust or debris from the fan vents.
- **Unusual Noise:**
 - Ensure the seat cover is properly installed and not rubbing against any part of the car seat or interior.
 - Check for any foreign objects that might have entered the fan area.
- **Automatic Shut-off Occurs Too Soon:**
 - The unit is designed to shut off after 2 hours of continuous operation. This is normal behavior.
 - If it shuts off significantly sooner, ensure the power connection is stable and not intermittent.

If the problem persists after attempting these steps, please contact FLORICH customer support for further assistance.

WARRANTY AND SUPPORT

FLORICH is committed to providing high-quality products. For any warranty claims, technical support, or inquiries regarding your Cooling Car Seat Cover, please refer to the contact information provided with your purchase or visit the official FLORICH brand store.

You can find more information and contact details on the [FLORICH Brand Store](#).

Please retain your proof of purchase for warranty purposes.