

DYNASTY PROAUDIO PX2

Dynasty ProAudio PX2 Multi-Source Home Audio Preamplifier User Manual

Model: PX2 | Brand: DYNASTY PROAUDIO

1. INTRODUCTION

The Dynasty ProAudio PX2 is a high-definition multi-source home audio preamplifier designed to provide exceptional audio clarity and extensive connectivity. Featuring optimized low-noise circuitry, a 3-band EQ, and a low-cut crossover, the PX2 ensures a superior listening experience with wide frequency response and minimal distortion. Its versatile design includes Bluetooth 5.3 with Qualcomm® aptX™ Lossless technology for wireless streaming, a USB DAC interface for digital audio, and multiple analog and digital inputs to accommodate various audio sources.

2. SAFETY INFORMATION

- Read all instructions carefully before operating the device.
- Keep the manual for future reference.
- Do not expose the unit to moisture, rain, or extreme temperatures.
- Ensure proper ventilation to prevent overheating.
- Disconnect power during lightning storms or when unused for long periods.
- Refer all servicing to qualified service personnel.

3. PACKAGE CONTENTS

- Dynasty ProAudio PX2 Preamplifier

4. PRODUCT OVERVIEW

4.1 Front Panel



Image: Front view of the Dynasty ProAudio PX2 Preamplifier, showing various controls and inputs. The front panel provides access to power, microphone input, headphone output, various input selectors, tone controls (Bass, Mid, Treble), Loudness, Balance, and Master Volume. Dedicated buttons for Tape, Phono, Mono, Mute, and Pairing are also present.

4.2 Rear Panel



Image: Rear view of the Dynasty ProAudio PX2 Preamplifier, displaying analog and digital input/output ports.

The rear panel features a comprehensive array of analog inputs (Phono, Aux1, Aux2, CD/DVD, Tape Play), analog outputs (Tape Rec, Main Out, X-Over, Sub Mono), digital inputs (Optical, USB), a ground terminal, and a trigger output. The power input with voltage selector is also located here.

5. SETUP

5.1 Connections

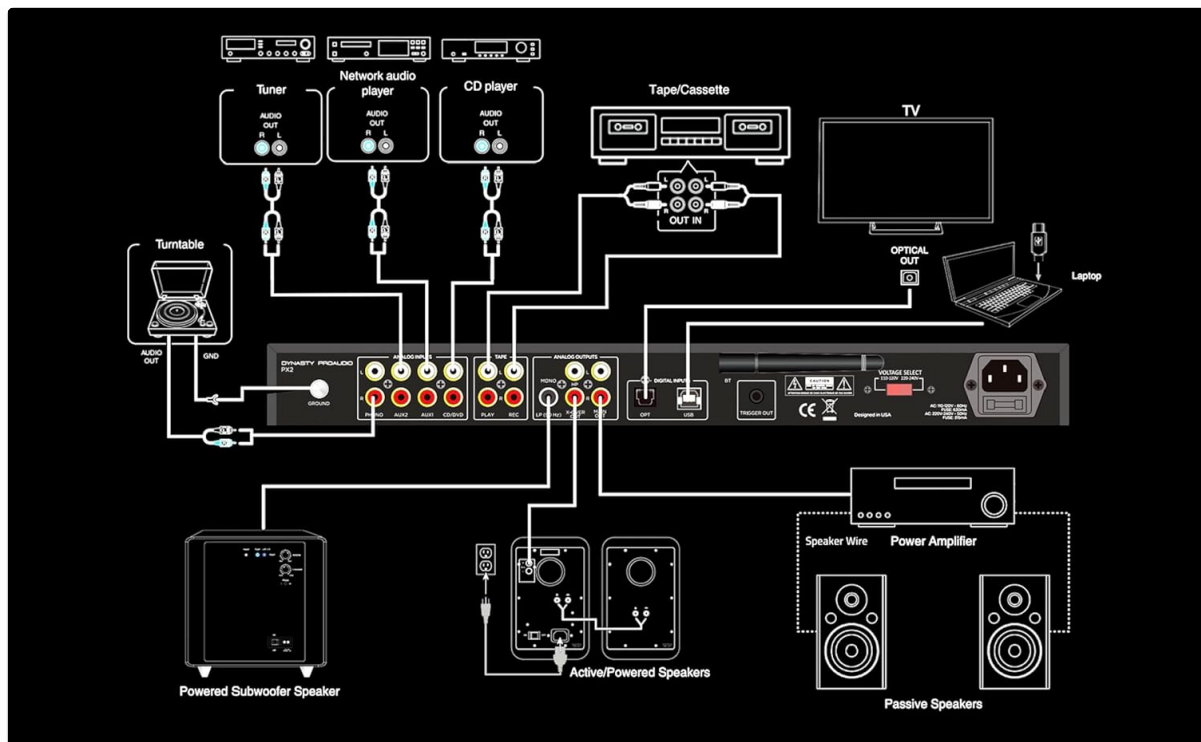


Image: A detailed connection diagram illustrating how to connect various audio sources and outputs to the PX2 preamplifier.

The PX2 offers extensive connectivity options:

- **Analog Inputs:** Connect up to 4 RCA line inputs for devices like CD players, tuners, or network audio players. A dedicated RCA Phono input with RIAA preamp and ground terminal is available for turntables.
- **Digital Inputs:** Use the S/PDIF (Optical) input for connecting TVs or other digital audio devices. The USB DAC accepts digital audio from a computer or other USB-supported digital audio source, supporting standard stereo PCM digital audio.
- **Microphone Input:** A front-panel 1/4" phone jack supports microphone input with a low-noise mic preamp.
- **Headphone Output:** A front-panel 1/4" phone jack provides a stereo headphone output.
- **Outputs:** The PX2 provides Full Range Stereo, X-Over, Sub Mono, and Stereo Headphone outputs for flexible system integration.

5.2 Rack Mounting

The PX2 features a 1U rack-mountable design with removable feet. It can be used in a standard audio rack, on a table, or on a shelf, providing flexible placement options for any audio system.

6. OPERATING INSTRUCTIONS

6.1 Power On/Off

Press the Power button on the front panel to turn the unit on or off.

6.2 Source Selection

Use the Source Select buttons on the front panel to choose between connected inputs (Bluetooth, Optical, USB DAC, Aux1, Aux2, CD/DVD, Phono, Tape).

6.3 Volume Control

Adjust the Master Volume knob to control the overall output level. Individual input levels can be fine-tuned using the respective level controls.

6.4 Tone Controls

Utilize the Bass, Mid, and Treble knobs to adjust the frequency response to your preference. The Loudness control can be engaged for enhanced low-frequency response at lower volumes. The Low Filter button activates a low-cut crossover to optimize sound when using a subwoofer.

6.5 Bluetooth Operation

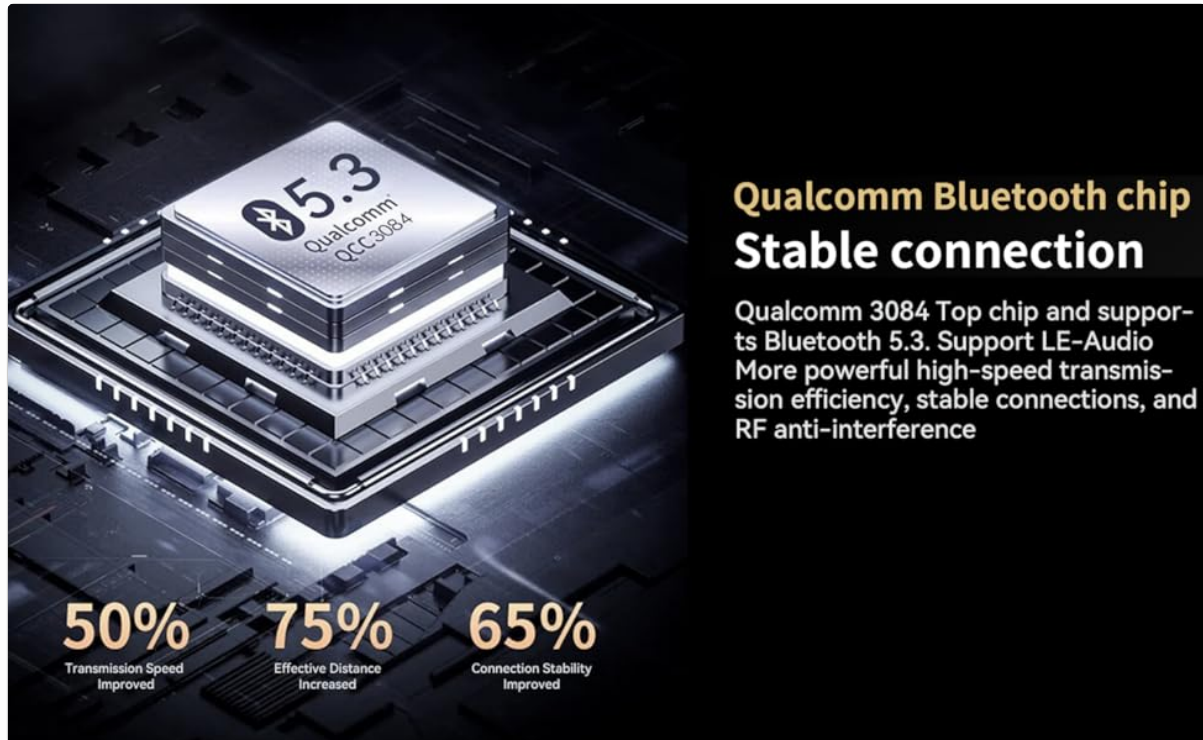


Image: A diagram highlighting the features of the Qualcomm Bluetooth 5.3 chip, including improved transmission speed, effective distance, and connection stability.

To pair a Bluetooth device, select the Bluetooth input and press the Pairing button. Search for 'Dynasty ProAudio PX2' on your device and connect. The PX2 features a Qualcomm® aptX™ Lossless Bluetooth 5.3 chipset for high-speed transmission, stable connections, and RF anti-interference.

6.6 USB DAC Operation

Connect your computer or other digital audio source to the USB DAC input. The PX2 supports standard stereo PCM digital audio, allowing you to access audio stored on a thumb drive or stream from your computer.

6.7 Microphone Usage

Plug a 1/4" microphone into the front panel Mic In jack. Adjust the Mic Level knob to control the microphone's volume. The low-noise microphone preamp ensures clear sound.

7. MAINTENANCE

- Clean the unit with a soft, dry cloth. Do not use liquid cleaners.

- Keep the unit free from dust and debris.
- Ensure all connections are secure and free from corrosion.

8. TROUBLESHOOTING

- **No Sound:** Check all cable connections, ensure the correct input source is selected, and verify that the volume is not muted or set too low.
- **Distorted Sound:** Check input levels for clipping, ensure cables are securely connected, and try adjusting tone controls.
- **Bluetooth Connectivity Issues:** Ensure the PX2 is in pairing mode, your device's Bluetooth is on, and there are no obstructions between the devices. Try unpairing and re-pairing.
- **Humming/Noise:** Ensure proper grounding for turntables. Check for loose connections or interference from other electronic devices.

9. SPECIFICATIONS

Feature	Value
Product Dimensions	17 x 8.8 x 1.12 inches
Item Weight	6.4 pounds
Item Model Number	PX2
Bluetooth Version	5.3 with Qualcomm® aptX™ Lossless
Inputs	4 RCA Line, 1 RCA Phono, 1 S/PDIF (Optical), 1 USB DAC, 1/4" Mic In
Outputs	Full Range Stereo, X-Over, Sub Mono, 1/4" Stereo Headphone
Equalization	3-band EQ (Bass, Mid, Treble), Loudness, Low-cut Crossover
Design	1U Rack-mountable with removable feet

10. WARRANTY AND SUPPORT

For warranty information and technical support, please refer to the documentation included with your product or visit the official DYNASTY PROAUDIO website. Keep your purchase receipt as proof of purchase for any warranty claims.

11. RELATED PRODUCT VIDEOS (SELLER CONTENT)

AIYIMA T1 PRO Tube Preamplifier Overview

This video provides an overview of the AIYIMA T1 PRO Tube Preamplifier, showcasing its features and design. While not the exact PX2 model, it demonstrates a similar product type from a seller, offering insights into preamp functionalities.

Fosi Audio P4 Mini Preamp Overview

An overview of the Fosi Audio P4 Mini Preamp, highlighting its features and connectivity. This video from a seller offers a look at a comparable preamplifier product.

Balanced Preamp for Home Audio Setup

This video demonstrates a balanced preamp for home audio, suitable for 2-channel stereo and 2.1 setups. It provides context on how preamps integrate into a home audio system.

Douk Audio T8 Multi-Band EQ Tube Preamp

A brief look at the Douk Audio T8 Multi-Band EQ Tube Preamp, an XLR equalizer. This video showcases a preamp with equalization features, relevant to the PX2's capabilities.

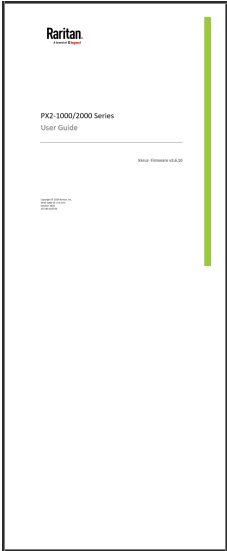
Fosi Audio LC30 VU Meter Amplifier Introduction







This video introduces the Fosi Audio LC30 VU Meter Amplifier, providing a detailed look at its design and functionality. It offers a comprehensive view of a related audio component.

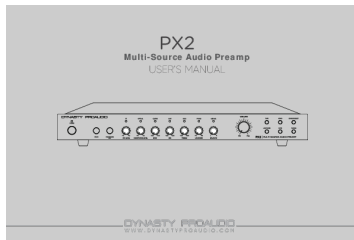
Nobsound EQ9 HiFi 9-Band Stereo EQ Preamp

An overview of the Nobsound EQ9 HiFi 9-Band Stereo EQ Preamp, an analog equalizer. This video highlights equalization capabilities found in preamplifiers.

Related Documents - PX2

	<p>Raritan PX2-1000/2000 Series User Guide</p> <p>Comprehensive user guide for Raritan PX2-1000 and PX2-2000 Series intelligent power distribution units (PDUs), covering installation, configuration, operation, and maintenance. Learn about safety guidelines, web interface usage, and connecting external equipment.</p>
---	---

 <p>ICON DUO22 Live USB USB2.0 High-Speed</p> <p>1 Mic-In / 1 Instrument-In, 2 Out professional recording (2 USB mix-fuse with smart phone connectivity for live streaming applications)</p> <p>CE FCC KOREA</p>	<p>ICON ProAudio Duo22 Live USB Audio Interface User Manual</p> <p>Comprehensive user manual for the ICON ProAudio Duo22 Live USB audio interface, detailing its features, setup, driver installation for Mac and Windows, mixer controls, settings, hardware connections, specifications, and service information.</p>
 <p>GASLAB TECHNOLOGY</p> <p>User Manual PolyXeta®2 PX2 EX and TOX</p> 	<p>PolyXeta@2 PX2 EX and TOX User Manual</p> <p>Comprehensive user manual for the PolyXeta@2 PX2 EX and TOX fixed gas detectors. Covers installation, operation, maintenance, safety, and technical specifications for detecting combustible and toxic gases, as well as oxygen.</p>
 <p>ICON MOBILE-R</p> <p>1 Mic-In / 1 Instrument-In, 2 Out professional recording (2 USB mix-fuse with smart phone connectivity for live streaming applications)</p> <p>CE FCC KOREA</p>	<p>ICON ProAudio MobileR Dyna USB Audio Interface User Manual</p> <p>Comprehensive user manual for the ICON ProAudio MobileR Dyna, a 1 Mic-In / 1 Instrument-In, 2 Out professional recording USB interface with smart phone connectivity for live streaming applications. Includes setup, features, driver installation, software usage, and specifications.</p>
 <p>ANSWERS AND EXPLANATIONS 2026 CSAT SEPTEMBER MOCK EXAM</p> <p>1. Multiple Choice Questions</p> <p>1. The correct answer is (A). The passage discusses the impact of the Industrial Revolution on the environment, specifically focusing on the increase in air pollution and the resulting health problems. Option (A) correctly identifies the main theme of the passage.</p> <p>2. The correct answer is (B). The passage mentions that the Industrial Revolution led to a significant increase in the production of goods, which in turn led to a higher standard of living for many people. Option (B) correctly reflects this point.</p> <p>3. The correct answer is (C). The passage states that the Industrial Revolution was a period of rapid technological advancement, which led to the development of new machines and processes. Option (C) correctly identifies this as a key feature of the era.</p> <p>4. The correct answer is (D). The passage discusses the social changes that occurred during the Industrial Revolution, including the growth of the middle class and the emergence of new social movements. Option (D) correctly identifies this as a significant aspect of the period.</p> <p>5. The correct answer is (E). The passage concludes by stating that the Industrial Revolution was a transformative period in human history, one that shaped the modern world in many ways. Option (E) correctly summarizes this conclusion.</p> <p>2. Short Answer Questions</p> <p>1. The correct answer is: The Industrial Revolution was a period of rapid technological advancement, which led to the development of new machines and processes. This period also saw significant social changes, including the growth of the middle class and the emergence of new social movements.</p> <p>2. The correct answer is: The Industrial Revolution led to a significant increase in the production of goods, which in turn led to a higher standard of living for many people. However, it also resulted in increased air pollution and health problems.</p> <p>3. The correct answer is: The Industrial Revolution was a transformative period in human history, one that shaped the modern world in many ways. It led to the development of new technologies and processes, as well as significant social changes.</p> <p>4. The correct answer is: The Industrial Revolution was a period of rapid technological advancement, which led to the development of new machines and processes. This period also saw significant social changes, including the growth of the middle class and the emergence of new social movements.</p> <p>5. The correct answer is: The Industrial Revolution led to a significant increase in the production of goods, which in turn led to a higher standard of living for many people. However, it also resulted in increased air pollution and health problems.</p> <p>3. Essay Questions</p> <p>1. The correct answer is: The Industrial Revolution was a transformative period in human history, one that shaped the modern world in many ways. It led to the development of new technologies and processes, as well as significant social changes. The growth of the middle class and the emergence of new social movements were key features of this period.</p> <p>2. The correct answer is: The Industrial Revolution led to a significant increase in the production of goods, which in turn led to a higher standard of living for many people. However, it also resulted in increased air pollution and health problems. This period was also characterized by rapid technological advancement and the development of new machines and processes.</p> <p>3. The correct answer is: The Industrial Revolution was a transformative period in human history, one that shaped the modern world in many ways. It led to the development of new technologies and processes, as well as significant social changes. The growth of the middle class and the emergence of new social movements were key features of this period.</p> <p>4. The correct answer is: The Industrial Revolution led to a significant increase in the production of goods, which in turn led to a higher standard of living for many people. However, it also resulted in increased air pollution and health problems. This period was also characterized by rapid technological advancement and the development of new machines and processes.</p> <p>5. The correct answer is: The Industrial Revolution was a transformative period in human history, one that shaped the modern world in many ways. It led to the development of new technologies and processes, as well as significant social changes. The growth of the middle class and the emergence of new social movements were key features of this period.</p> <p>CSAT</p>	<p>2026 CSAT September Mock Exam: World History Answers and Explanations</p> <p>Comprehensive answers and detailed explanations for the 2026 College Scholastic Ability Test (CSAT) September mock exam in World History, covering key historical periods and civilizations.</p>
 <p>Raritan SNMP MIB User Guide</p> <p>Revision 1.0 May 1, 2023</p>	<p>Raritan SNMP MIB User Guide for PDU Devices</p> <p>Comprehensive user guide for Raritan PDU SNMP MIB, detailing configuration, access, capabilities, object indexing, and sensor value interpretation for PX2, PX3, PX3TS, EMX, BCM2, PMC, and PXE devices.</p>



[\[pdf\]](#) User Manual Installation Guide Accessories

DYNASTY PROAUDIO PX2 Manual User ManualUser Dynasty ProAudiocdn shopify s files 1 0092 3952
7524 v 1745440437 |||

PX2 Multi-Source Audio Preamp USER'S MANUAL

WWW.DYNASTYPROAUDIO.COM WARNING 1. Do not place or install this device in an area where it can be exposed to excessive amounts of dust, humidity, oil, smoke, or combustible vapors. 2. To prevent risk of electrical shock or fire hazard, due to overheating...

lang:en score:43 filesize: 3.16 M page_count: 8 document date: 2025-01-09