

FGJDFD KFR26W\$BP2-180(DYDC-390-N3).D.13.WP2.1 202302100880

FGJDFD Midea Air Conditioner Control Board KFR26W\$BP2-180(DYDC-390-N3).D.13.WP2.1 Instruction Manual

Model: KFR26W\$BP2-180(DYDC-390-N3).D.13.WP2.1 202302100880

1. PRODUCT OVERVIEW

This document provides instructions for the FGJDFD Midea Air Conditioner Control Board, part number KFR26W\$BP2-180(DYDC-390-N3).D.13.WP2.1 202302100880. This printed circuit board (PCB) is designed as a replacement or accessory for compatible Midea air conditioner models, facilitating the control and operation of the unit, particularly for DC fan applications.

The control board is a critical component for managing various functions of an air conditioning system, ensuring proper communication and operation between different parts of the unit.

2. SAFETY INFORMATION

WARNING: Electrical Shock Hazard

- Always disconnect power to the air conditioning unit before attempting any installation, maintenance, or repair. Failure to do so can result in serious injury or death.
- Installation should only be performed by qualified HVAC technicians or individuals with extensive experience in electrical and air conditioning systems.
- Wear appropriate personal protective equipment (PPE), including insulated gloves and safety glasses.
- Ensure all connections are secure and correctly wired according to the air conditioner's service manual.
- Do not touch live electrical components.

This product contains no high hazardous chemicals.

3. PACKAGE CONTENTS

- 1 x FGJDFD Midea Air Conditioner Control Board (Part Number: KFR26W\$BP2-180(DYDC-390-N3).D.13.WP2.1 202302100880)

4. PRODUCT FEATURES

- **Compatibility:** Designed for seamless integration with specific Midea air conditioner models.
- **Reliable Operation:** High-quality circuit board design ensures stable and reliable performance.
- **Durability:** Rugged construction for long-lasting performance in various environmental conditions.
- **Application:** Suitable for home air conditioning systems, particularly those utilizing DC fans.

5. INSTALLATION GUIDE

This section outlines the general steps for replacing an air conditioner control board. Due to the complexity and electrical hazards involved, professional installation is strongly recommended.

5.1 Tools Required

- Screwdrivers (Phillips and Flathead)
- Multimeter
- Wire strippers/cutters
- Insulated gloves
- Safety glasses
- Service manual for your specific Midea air conditioner model

5.2 Installation Steps

1. **Disconnect Power:** Locate the circuit breaker for the air conditioning unit and turn off the power completely. Verify with a multimeter that no power is present.
2. **Access the Control Board:** Open the air conditioner's outdoor or indoor unit panel to access the existing control board. Refer to your unit's service manual for exact panel removal procedures.
3. **Document Wiring:** Before disconnecting any wires, take clear photographs of all existing wiring connections to the old control board. Label each wire and its corresponding terminal for accurate re-connection.
4. **Remove Old Board:** Carefully disconnect all wires and mounting screws holding the old control board in place. Remove the old board.
5. **Install New Board:** Position the new FGJDFD control board in the same location as the old one. Secure it with the mounting screws.
6. **Connect Wiring:** Reconnect all wires to the new control board according to your documented photographs and labels. Double-check every connection for accuracy and security.
7. **Close Unit:** Once all connections are verified, close the air conditioner unit's panel.
8. **Restore Power:** Turn the circuit breaker back on to restore power to the air conditioning unit.
9. **Test Operation:** Power on the air conditioner and test its functions to ensure proper operation. Monitor for any unusual noises, smells, or error codes.



Figure 1: Top-down view of the control board, showing various components and connectors.



Figure 2: Angled perspective of the control board, highlighting the layout of capacitors, inductors, and integrated circuits.

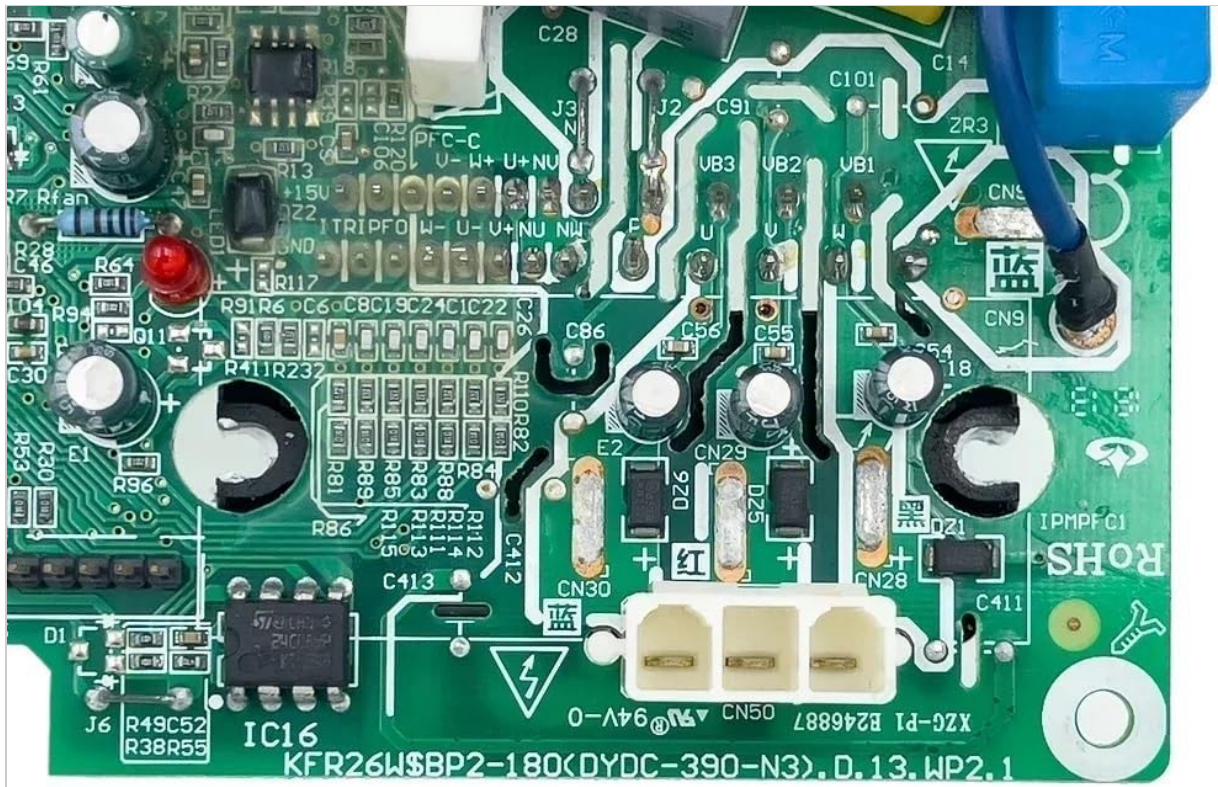


Figure 3: Detailed close-up of a specific section of the control board, showing component labels and connection points, including the part number KFR26W\$BP2-180(DYDC-390-N3).D.13.WP2.1.

6. OPERATION

The FGJDFD Midea Air Conditioner Control Board operates as an integral part of your air conditioning system. Once correctly installed and powered, it will manage the functions of the air conditioner as dictated by the unit's main control system and user input (e.g., remote control, thermostat).

There are no direct user-operable controls on the board itself. Its operation is entirely dependent on the air conditioner's overall system. Ensure that the air conditioner's main power is stable and within specified voltage ranges for optimal board performance.

7. MAINTENANCE

The control board itself requires minimal maintenance. However, to ensure its longevity and proper function, consider the following:

- **Keep Dry:** Protect the control board from moisture and condensation. Water damage can lead to short circuits and component failure.
- **Cleanliness:** Periodically inspect the board for dust and debris accumulation. If necessary, gently clean with compressed air or a soft, dry brush. Ensure power is disconnected before cleaning.
- **Ventilation:** Ensure the air conditioner unit has adequate ventilation to prevent overheating of internal components, including the control board.
- **Professional Inspection:** Regular professional maintenance of the entire air conditioning unit can help identify and address potential issues before they affect the control board.

8. TROUBLESHOOTING

If the air conditioner unit is not functioning correctly after installing the new control board, consider the following troubleshooting steps:

- **No Power:** Check the circuit breaker and ensure power is restored to the unit. Verify all power connections to the control board are secure.
- **Incorrect Wiring:** Double-check all wiring connections against your documentation and the air conditioner's service manual. Even a single misplaced wire can prevent proper operation.
- **Error Codes:** If the air conditioner displays an error code, consult your unit's service manual to interpret the code and identify the underlying issue.
- **Component Failure:** Use a multimeter to test for continuity and correct voltage at various points on the board if you suspect a component failure. This should only be done by a qualified technician.
- **Compatibility:** Ensure the control board is indeed compatible with your specific Midea air conditioner model. Incorrect model numbers can lead to non-functionality.

If issues persist, contact a qualified HVAC technician for further diagnosis and repair.

9. SPECIFICATIONS

Attribute	Detail
Item Name	Air Conditioner Control Board
Part Number	KFR26W\$BP2-180(DYDC-390-N3).D.13.WP2.1 202302100880
Brand	FGJDFD
Type	Printed Circuit Board (PCB)
Application	Home Air Conditioning Accessories
Package Dimensions	1.18 x 0.79 x 0.39 inches
Item Weight	1.76 ounces
Origin	Mainland China

10. WARRANTY AND SUPPORT

For specific warranty information regarding this FGJDFD Midea Air Conditioner Control Board, please refer to the purchase documentation or contact the seller directly. Warranty terms typically cover manufacturing defects for a specified period from the date of purchase.

For technical support or assistance with installation and troubleshooting beyond the scope of this manual, it is recommended to consult a certified HVAC professional or contact the product seller for guidance.