



[Manuals.plus](#) /

> [Jocoevol](#) /

> Jocoevol Modern 6 Drawer Dresser (Model WG-0616) User Manual

Jocoevol WG-0616

Jocoevol Modern 6 Drawer Dresser (Model WG-0616) User Manual

Model: WG-0616 | Brand: Jocoevol

1. INTRODUCTION

Thank you for choosing the Jocoevol Modern 6 Drawer Dresser. This manual provides essential information for the safe assembly, proper use, and effective maintenance of your new furniture. Please read these instructions carefully before beginning assembly and retain them for future reference.



Image: The Jocoevol Modern 6 Drawer Dresser in white, featuring a sleek design with six handle-less drawers, positioned in a contemporary bedroom.

2. SAFETY INFORMATION

WARNING: Furniture Tip-Over Hazard. Serious or fatal crushing injuries can occur from furniture tip-over. To prevent tip-over, this furniture must be permanently attached to the wall using the anti-tip kit provided. Never allow children to climb or hang on drawers, doors, or shelves.

- Always use the anti-tip device provided to secure the dresser to a wall.
- Do not place heavy objects on top of the dresser.
- Ensure the dresser is placed on a flat, stable surface.
- Keep small parts and assembly hardware away from children.

Anti-collapse Design

Protect your kids and pets

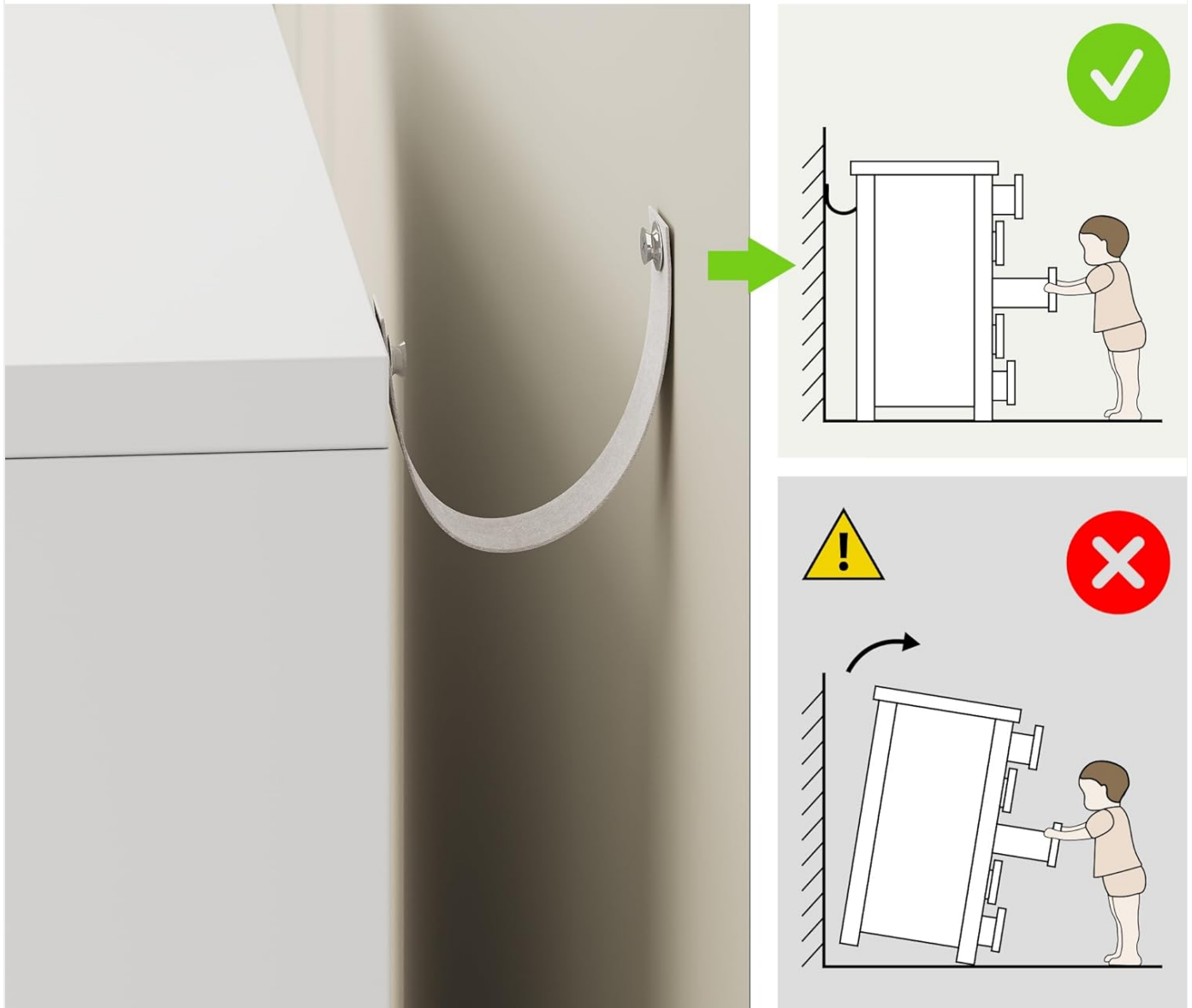


Image: An illustration demonstrating the correct use of an anti-tip device to secure the dresser to a wall, preventing accidental tip-overs. An incorrect scenario shows a dresser tipping without the device.

3. PACKAGE CONTENTS

Before assembly, verify that all components listed below are present and undamaged. If any parts are missing or damaged, please contact customer support.

- Dresser panels and hardware
- 6 Drawer units
- Installation tools (basic)
- Instruction manual
- Anti-tip kit

4. SPECIFICATIONS

Feature	Detail
Brand	Jocoevol
Model Number	WG-0616
Material	Wood
Finish Type	Brushed
Product Dimensions (D x W x H)	15.3"D x 47.2"W x 32.3"H
Number of Drawers	6
Drawer Type	Under Mounted Slide
Item Weight	91 Pounds
Additional Features	Anti-Tip Kit Design, Space Saving, Top Surface Storage
Color	White

Product Size

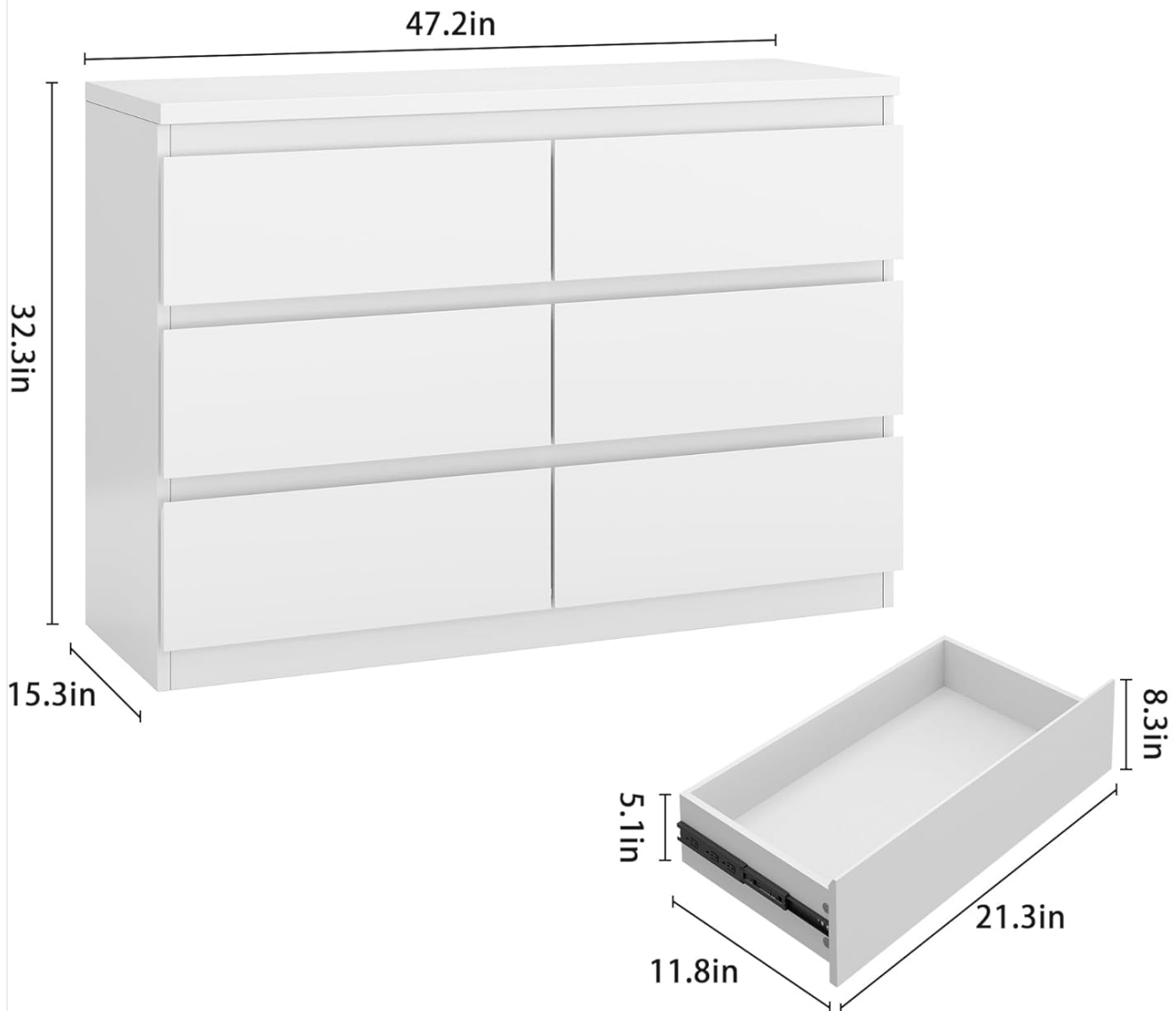


Image: Detailed product dimensions for the dresser (47.2 inches wide, 32.3 inches high, 15.3 inches deep) and individual drawer dimensions (21.3 inches wide, 11.8 inches deep, 5.1 inches high).

5. SETUP AND ASSEMBLY

Assembly is required for this dresser. Please follow the included step-by-step instructions carefully. It is recommended to have two people for assembly. A screwdriver is generally sufficient, but a power drill can expedite the process (use with caution to avoid overtightening).

Assembly Video Guide:

Your browser does not support the video tag.

Video: An official installation guide for the Jocoevol Modern 6 Drawer Dresser, demonstrating the step-by-step assembly process. This video is provided by the seller, yinklev.

Key Assembly Tips:

- Lay out all parts and hardware before starting.
- Identify each component by its label in the instruction manual.

- Ensure all screws are tightened securely, but do not overtighten.
- Pay close attention when installing drawer slides to ensure smooth operation. Misaligned slides can cause drawers to stick or not close properly.
- Install the anti-tip kit as the final step to secure the dresser to a wall.

6. OPERATING INSTRUCTIONS

The Jocoevol Modern 6 Drawer Dresser is designed for convenient storage in various rooms.

Drawer Usage:

- To open a drawer, gently pull the top edge of the drawer front.
- To close, push the drawer firmly until it is fully seated. The under-mounted slides are designed for smooth operation.
- Each drawer measures approximately 11.8"D x 5.1"H x 21.3"W and can store items such as clothing, linens, or accessories.
- Avoid overloading drawers to ensure smooth operation and prevent damage to the slides.

Quality Drawers Dresser



**Environmental
Friendly**



Waterproof



**Easy to
clean**



Stable



Image: The Jocoevol dresser with two drawers open, revealing organized contents and highlighting the quality of the drawer construction and smooth slides.

Classified Storage

Fasy access to socks, underwear or small items

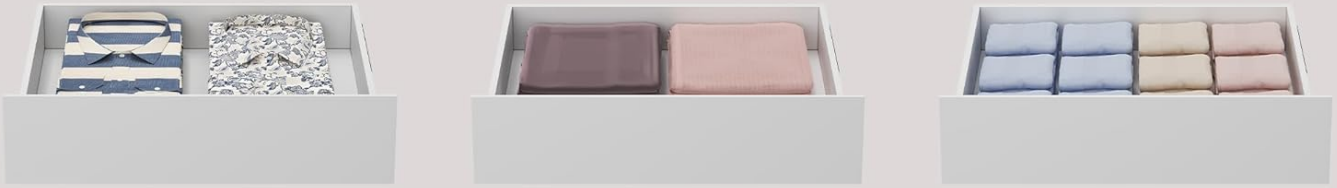


Image: A close-up view of the dresser drawers demonstrating organized storage for small items like socks, underwear, or accessories using internal dividers.

Product Overview Video:

Your browser does not support the video tag.

Video: A brief overview of the Jocoevol Modern 6 Drawer Dresser, showcasing its design and features. This video is provided by the seller, yinklev.

7. MAINTENANCE

Proper care will extend the life and appearance of your dresser.

- **Cleaning:** Wipe with a damp cloth for general cleaning. For spills, wipe immediately with a dry cloth. Avoid abrasive cleaners or harsh chemicals.
- **Dusting:** Regularly dust with a soft, dry cloth.
- **Avoid Direct Sunlight:** Prolonged exposure to direct sunlight can cause fading or discoloration.
- **Humidity Control:** Maintain a stable humidity level in the room to prevent wood warping or cracking.

- **Check Hardware:** Periodically check and tighten all assembly hardware to ensure stability.

8. TROUBLESHOOTING

If you encounter any issues with your dresser, refer to the following common problems and solutions:

- **Drawers do not slide smoothly:**
 - Ensure drawer slides are correctly installed and aligned.
 - Check for any obstructions in the drawer tracks.
 - Verify that all screws on the drawer slides are fully tightened and flat.
- **Dresser feels unstable or wobbly:**
 - Confirm all assembly hardware is securely tightened.
 - Ensure the dresser is on a level surface. Adjust floor glides if present.
 - Verify the anti-tip kit is properly installed and secured to the wall.
- **Missing parts:**
 - Carefully re-check all packaging materials.
 - Contact customer support with the specific part number from the manual.

9. WARRANTY INFORMATION

The Jocoevol Modern 6 Drawer Dresser comes with a **Lifetime Warranty**. This warranty covers manufacturing defects under normal household use. Please retain your proof of purchase for warranty claims. For specific terms and conditions, please contact Jocoevol customer support.

10. CUSTOMER SUPPORT

For any questions, assistance, or to report missing/damaged parts, please contact Jocoevol customer support. You can find more information and contact details on the official Jocoevol store page:

[Visit the Jocoevol Store on Amazon](#)

