

Daytech DA10

DAYTECH DA10 Fridge and Freezer Door Alarm User Manual

Model: DA10

IMPORTANT SAFETY INFORMATION

Please read all instructions carefully before using the DAYTECH DA10 Fridge and Freezer Door Alarm. Retain this manual for future reference.

- This device is intended for indoor use only.
- Do not expose the device to extreme temperatures, direct sunlight, or moisture.
- Keep out of reach of children to prevent accidental ingestion of small parts or batteries.
- Ensure proper battery polarity when installing.
- Dispose of used batteries according to local regulations.

PRODUCT OVERVIEW

The DAYTECH DA10 Fridge and Freezer Door Alarm is designed to alert users when a refrigerator or freezer door has been left open for a user-defined period, helping to prevent food spoilage and conserve energy.

Components

- **Main Unit:** Contains the buzzer, LED indicator, and control buttons.
- **Magnet:** A smaller component that interacts with the main unit to detect door status.
- **AAA Batteries:** Two AAA batteries are required and included for operation.
- **Adhesive Tape:** For secure, tool-free installation.

Device Features

- **Adjustable Delay:** Set the alarm to trigger after 1, 2, 3, or 4 minutes.
- **Two Tones:** Choose between a gentle chime or a loud alarm sound.
- **Adjustable Volume:** Five volume levels ranging from 0 dB (mute) to 120 dB.
- **Low Battery Warning:** The device will indicate when batteries need replacement.

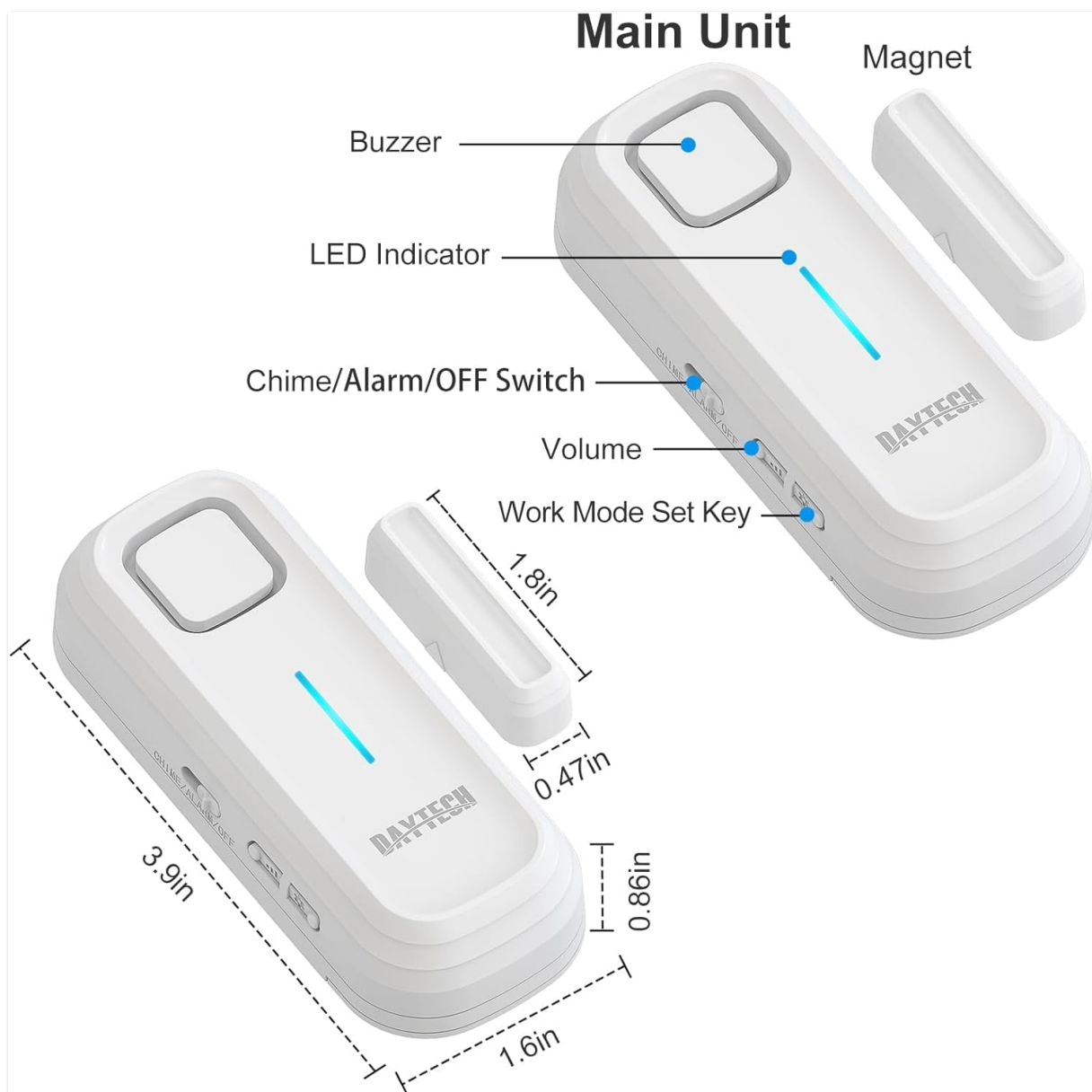


Figure 1: DAYTECH DA10 Main Unit and Magnet with labeled parts and dimensions. The main unit features a buzzer, LED indicator, Chime/Alarm/OFF switch, volume button, and work mode set key. Dimensions are approximately 3.9 x 1.6 x 0.86 inches.

SETUP AND INSTALLATION

Battery Installation

The device requires two AAA batteries for operation. These are included with your purchase.

1. Locate the battery cover on the back of the main unit.
2. Slide the cover open in the direction indicated by the 'OPEN' arrow.
3. Insert two AAA batteries, ensuring correct polarity (+/-).
4. Slide the battery cover back into place until it clicks securely.

Mounting the Alarm

The alarm can be installed on various doors, including refrigerators, freezers, cabinets, and windows, using the provided adhesive tape.

1. Clean the surface where the main unit and magnet will be installed. Ensure it is dry and free of dust or grease.

2. Peel off the protective film from the adhesive tape on the back of both the main unit and the magnet.
3. Attach the main unit to the door frame or the fixed part of the appliance.
4. Attach the magnet to the moving part of the door, ensuring it aligns with the triangular mark on the main unit.
5. **Important:** The distance between the main unit and the magnet must be less than 0.98 inches (2.5 cm) when the door is closed for proper detection.

INSTALLATION

Refrigerator door is flat with less than 0.6 inches of gap

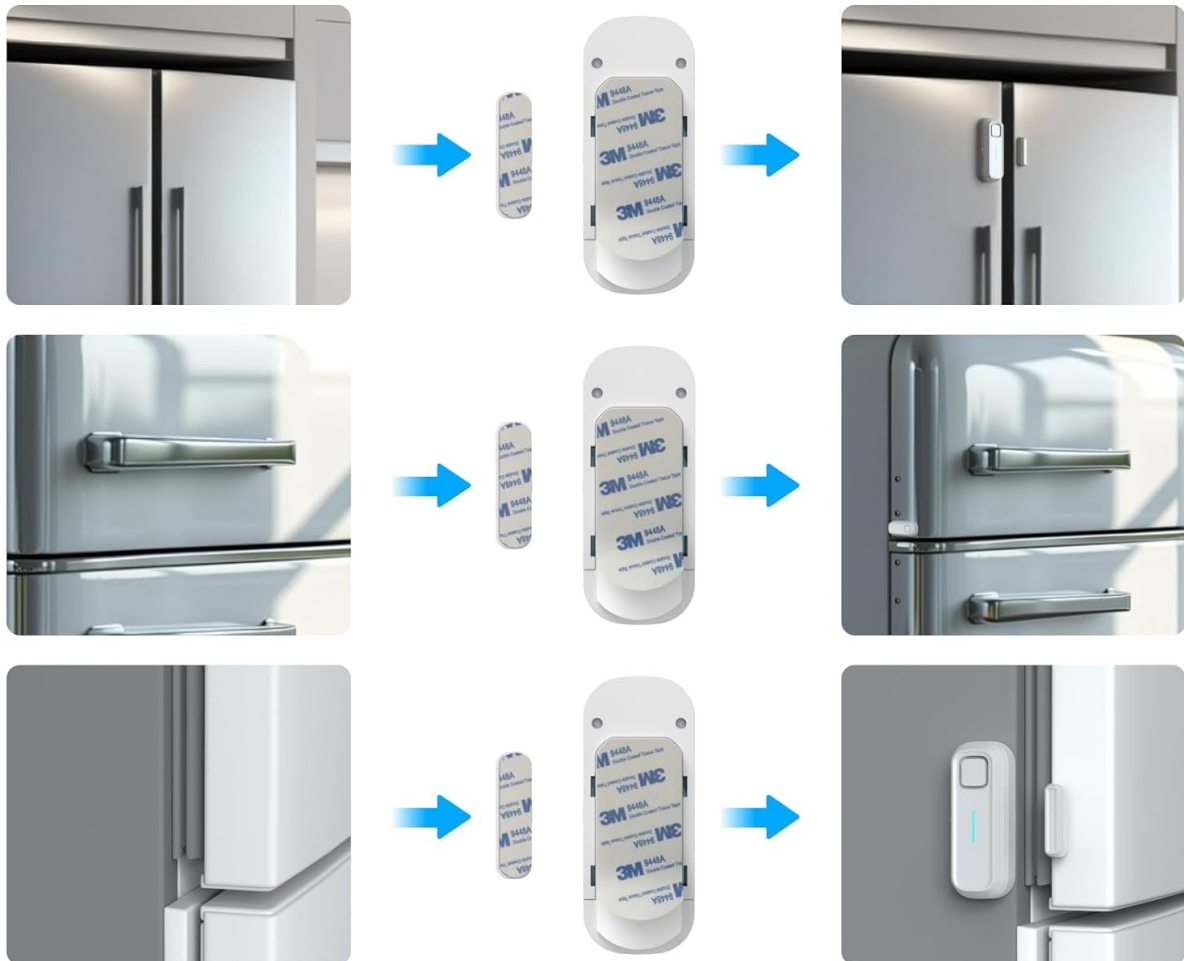


Figure 2: Visual guide for installing the alarm, demonstrating cleaning the surface, attaching the adhesive, and correctly positioning the main unit and magnet on various door types, emphasizing the alignment and gap requirement.

Installation Video Guide

Video 1: A detailed guide on how to set up your DAYTECH Fridge Door Alarm, including battery insertion and proper placement on the refrigerator door.

OPERATING INSTRUCTIONS

Power On/Off and Tone Selection

The device features a single switch for power and tone selection.

- Slide the switch to '**CHIME**' for a gentle reminder tone.

- Slide the switch to '**ALARM**' for a loud, piercing alert.
- Slide the switch to '**OFF**' to power down the device.

Adjusting Volume

The volume can be adjusted to suit your environment.

- Press the **Volume button** (located below the CHIME/ALARM/OFF switch) to cycle through 5 volume levels: 0 dB (mute), 30 dB, 60 dB, 90 dB, and 120 dB.



Figure 3: Illustration of the adjustable volume levels for the alarm, ranging from mute to 120 dB, suitable for different environments.

Setting Delay Mode

The alarm features four delay modes, allowing you to choose how long the door can remain open before an alert sounds.

- Press the **SET Key** (located at the bottom of the side panel) to cycle through the four available delay modes. Each press will advance to the next mode.



4 Working Modes

Mode 1:

After 1 min, Alarm sound and every 15 sec;

Mode 2:

After 2 min, Alarm sound and every 10 sec;

Mode 3:

After 3 mintues, Alarm sound and every 5 sec;

Mode 4:

After 4 min, Alarm sound and every 15 sec

Figure 4: The four working modes of the alarm. Mode 1: 1 min delay, alarm every 15 sec. Mode 2: 2 min delay, alarm every 10 sec. Mode 3: 3 min delay, alarm every 5 sec. Mode 4: 4 min delay, alarm every 15 sec.

Delay Mode Settings

Mode	Initial Delay	Alarm/Chime Frequency
1	1 minute	Sound for 5 seconds every 15 seconds
2	2 minutes	Sound for 10 seconds every 10 seconds
3	3 minutes	Sound for 15 seconds every 5 seconds
4	4 minutes	Sound for 20 seconds every 15 seconds

Operation Demonstration Video

Video 2: A demonstration of the DAYTECH Freezer Door Alarm's features, including sound options and delay settings.

Video 3: This video illustrates the various delay modes (1, 2, 3, and 4 minutes) and how the alarm functions after the set delay.

MAINTENANCE

Battery Replacement

When the low battery warning sounds (5 short beeps when the door is opened), it is time to replace the batteries.

1. Slide the battery cover open on the main unit.
2. Remove the old AAA batteries.
3. Insert two new AAA batteries, observing correct polarity.
4. Close the battery cover securely.

Cleaning

To clean the device, gently wipe the exterior with a dry, soft cloth. Do not use liquid cleaners or immerse the device in water.

TROUBLESHOOTING

- **Alarm not sounding:** Ensure the device is powered on (not in 'OFF' mode). Check if the batteries are correctly installed and have sufficient charge. Verify that the main unit and magnet are properly aligned and within the 0.98-inch (2.5 cm) gap.
- **Alarm too quiet or too loud:** Adjust the volume using the volume button on the side of the main unit.
- **False alarms:** Re-check the alignment and gap between the main unit and the magnet. Ensure they are securely attached and not shifting.
- **Low battery warning:** Replace both AAA batteries with new ones.

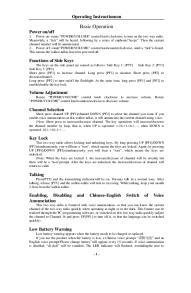
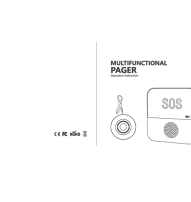
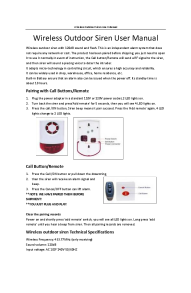
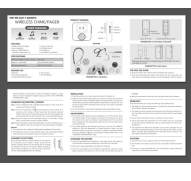

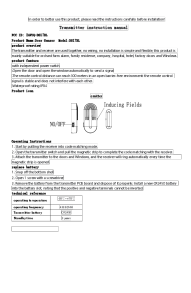
SPECIFICATIONS

- **Model:** DA10
- **Power Source:** 2 x AAA Batteries (included)
- **Voltage:** 3 Volts (DC)
- **Control Method:** Touch (for volume/mode), Slide Switch (for power/tone)
- **Mounting Type:** Door Mount (Adhesive)
- **Sensor Technology:** Contact Sensor
- **Dimensions (Main Unit):** Approximately 3.9 x 1.6 x 0.86 inches (100 x 40 x 22 mm)
- **Item Weight:** 7.2 ounces
- **Sound Level:** 0-120 dB (Adjustable)
- **Delay Modes:** 1, 2, 3, 4 minutes
- **Color:** White

WARRANTY AND SUPPORT

For warranty information, technical support, or any inquiries regarding your DAYTECH DA10 Fridge and Freezer Door Alarm, please refer to the contact details provided on the product packaging or visit the official Daytech website. Keep your purchase receipt as proof of purchase for warranty claims.

Related Documents - DA10

	<p>WT07-US Two Way Radio Operating Instructions</p> <p>Operating instructions for the WT07-US two way radio, covering basic operation, key functions, voice annunciation, low battery warnings, and advanced features like VOX and Scrambler/Compandor.</p>
	<p>Multifunctional Pager Operation Instruction and User Guide</p> <p>Comprehensive user manual for the Multifunctional Pager, detailing its appearance, power-on procedures, pairing with the SOS button, mobile app connectivity (Tuya Smart/Smart Life), app operations including alarm settings and device management, installation guidance, specifications, troubleshooting Q&A, and after-sales service information.</p>
	<p>Wireless Outdoor Siren User Manual - Daytech Electronics</p> <p>User manual for the Daytech Wireless Outdoor Siren with 120dB sound and flash. Includes setup instructions, pairing guide, and technical specifications.</p>
	<p>Daytech Wireless Chime/Pager User Manual - INST-EN-CC01-T-20230214</p> <p>Comprehensive user manual for the Daytech Wireless Chime/Pager (INST-EN-CC01-T-20230214), covering features, specifications, installation, operation, troubleshooting, and maintenance.</p>
	<p>BT-DB19 Transmitter Operating Manual</p> <p>This manual provides operating instructions for the BT-DB19 Transmitter, including product overview, features, technical specifications, and battery replacement.</p>
	<p>DS17BL Door Sensor Transmitter Instruction Manual</p> <p>Instruction manual for the DS17BL Door Sensor Transmitter by QUANZHOU DAYTECH ELECTRONICS CO., LTD. Includes product overview, features, operating instructions, battery replacement, and technical specifications.</p>