

Monster MH11901

Monster Achieve 100 AirLinks Wireless Earbuds

MODEL: MH11901

Brand: Monster

Introduction

Thank you for choosing the Monster Achieve 100 AirLinks Wireless Earbuds. These in-ear stereo headphones are designed to provide a high-quality audio experience with convenience and durability. This manual provides essential information for setting up, operating, maintaining, and troubleshooting your earbuds to ensure optimal performance.

Package Contents

- Monster Achieve 100 AirLinks Wireless Earbuds
- Charging Case
- SportClips (3 pairs)
- Eartips (S, M, L - 3 pairs)
- USB-C Charging Cable
- User Manual

Setup

1. Initial Charging

Before first use, fully charge the earbuds and the charging case. Connect the USB-C charging cable to the charging case and a power source. The indicator lights on the case will show the charging status. A 10-minute charge provides approximately 120 minutes of playback time.

SUPER FAST CHARGE

Charge for 10 minutes, Listen to the song for two hours



Image: Earbuds in charging case, demonstrating fast charging capability.

2. Pairing with Your Device

1. Ensure the earbuds are charged and placed in the charging case.
2. Open the charging case. The earbuds will automatically enter pairing mode.
3. On your smartphone or Bluetooth-enabled device, go to Bluetooth settings and turn Bluetooth on.
4. Select "MONSTER Achieve 100 AirLinks" from the list of available devices.
5. Once connected, you will hear an audio prompt, and the earbuds will be ready for use.



Image: Automatic instant pairing process with a smartphone.

3. Achieving a Comfortable Fit

The Monster Achieve 100 AirLinks come with multiple sizes of eartips (S, M, L) and SportClips to ensure a secure and comfortable fit. Experiment with different sizes to find the best seal for optimal sound quality and stability, especially during physical activity.

COMFORT & SNUG FIT

ergonomically built to
ensure comfortable and snug fit

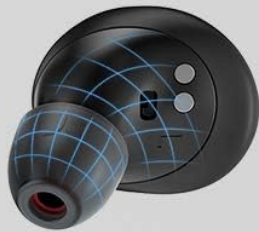


Image: Ergonomic design and included ear tips for a secure fit.

Operating Instructions

1. Power On/Off

- **Power On:** Open the charging case, or take the earbuds out of the case. They will power on automatically.
- **Power Off:** Place the earbuds back into the charging case and close the lid. They will power off automatically.

2. Music Playback Control

- **Play/Pause:** Single-tap the multi-function button on either earbud.
- **Next Track:** Double-tap the multi-function button on the right earbud.
- **Previous Track:** Double-tap the multi-function button on the left earbud.
- **Volume Up:** Triple-tap the multi-function button on the right earbud.
- **Volume Down:** Triple-tap the multi-function button on the left earbud.

3. Call Management

- **Answer/End Call:** Single-tap the multi-function button on either earbud.
- **Reject Call:** Press and hold the multi-function button on either earbud for 2 seconds.

4. Voice Assistant Activation

After your phone is connected, double-tap the multi-function button on either earbud to activate your device's voice assistant (e.g., Siri, Google Assistant).



Image: Multi-function button controls for music and calls.

5. Sound Quality and Features

The earbuds feature Pure Monster Sound, utilizing a unique digital audio processor for deep bass and enhanced clarity across the frequency range. The Bluetooth 5.0 chip ensures a stable and wide wireless connection. The water-resistant design makes them suitable for various weather conditions and activities like gym exercise and outdoor sports.



PURE MONSTER SOUND

The unique digital audio processor pumps up deep bass and enhances the clarity of the mids and highs of the Bluetooth earbuds

Image: Pure Monster Sound technology for enhanced audio.



Image: Water-resistant design of the earbuds.

Maintenance

1. Charging the Earbuds and Case

- To charge the earbuds, place them in the charging case.
- To charge the case, connect it to a USB power source using the provided USB-C cable.
- The charging case can extend the earbuds' playback time significantly.

2. Cleaning

- Regularly clean the eartips and the mesh screens of the earbuds with a soft, dry, lint-free cloth to prevent wax buildup and maintain sound quality.
- Wipe the charging contacts on both the earbuds and the case to ensure proper connection.
- Do not use harsh chemicals or abrasive materials for cleaning.

3. Storage

When not in use, store the earbuds in their charging case to protect them from dust, damage, and to keep them charged. Avoid exposing the earbuds or case to extreme temperatures or direct sunlight for extended periods.

Troubleshooting

- **Earbuds not pairing:** Ensure both earbuds are charged. Place them back in the case, close the lid, then open it again to re-initiate pairing mode. Check your device's Bluetooth settings and forget any previous connections before attempting to pair again.
- **No sound from one earbud:** Ensure both earbuds are charged and properly paired. Try resetting the earbuds by placing them in the case and then taking them out.
- **Charging issues:** Verify that the USB-C cable is securely connected to both the charging case and the power source. Clean the charging contacts on the earbuds and inside the case.
- **Poor sound quality:** Ensure the eartips provide a good seal in your ear. Try different eartip sizes. Clean any debris from the earbud mesh.
- **Earbuds falling out:** Experiment with different eartip and SportClip sizes to find the most secure fit for your ears.

If you encounter persistent issues, please refer to the Warranty & Support section for assistance.

Specifications

Feature	Detail
Model Name	MONSTER Achieve 100 AirLinks
Item Model Number	MH11901
Connectivity Technology	Bluetooth 5.0, Wireless
Noise Control	Adaptive Noise Cancellation
Charging Time	10 minutes for 120 minutes playback
Battery Life (Earbuds)	Approximately 4.3 Hours (single charge)
Battery Life (with Case)	Up to 1440 minutes (24 hours)
Water Resistance Level	Water Resistant
Control Method	Touch, Voice
Included Components	Charging Case, SportClips, Eartips
Material	Plastic
Item Weight	5.3 ounces
UPC	810079703968

Official Product Video

Your browser does not support the video tag.

Video: An overview of the Monster Achieve 100 AirLinks Wireless Earbuds, showcasing their design, features, and use in various activities.







Warranty & Support

The Monster Achieve 100 AirLinks Wireless Earbuds come with a 12-month Worry-Free Service. If you have any questions, concerns, or require technical assistance, please contact our customer service team. We are committed to providing the best customer service within 8 hours.

For support, please visit the official Monster website or refer to the contact information provided with your product packaging.

© 2025 Monster. All rights reserved.

Related Documents - MH11901

	Monster MH12005 In-ear Earphones Quick Start Guide Quick start guide for Monster MH12005 In-ear Earphones, covering product overview, charging, pairing, call and music controls, indicator lights, and FCC compliance information. Learn how to set up and use your Monster Achieve 300 AirLinks wireless earbuds.
	Monster N-Lite 203 Airlinks Bluetooth Headphones Quick Start Guide Concise guide to setting up and using Monster N-Lite 203 Airlinks Bluetooth headphones, covering pairing, controls, and features.
	Monster Open Ear AC225 Bluetooth Headphones Quick Start Guide A concise guide to setting up and using your Monster Open Ear AC225 Bluetooth Headphones, covering charging, pairing, wearing, and basic operations.
	Monster N-LITE 203 AIRLINKS True Wireless Earbuds - Quick Start Guide Explore the features and controls of the Monster N-LITE 203 AIRLINKS true wireless Bluetooth earbuds. This guide covers inventory, product specifications, and intuitive touch controls for music, calls, and voice assistants.
	Monster Aria Free Quick Start Guide - Wireless Open Ear Headphones Get started quickly with the Monster Aria Free open-ear wireless headphones. This guide covers charging, pairing, controls, and wearing instructions for model MH22134.
	Monster N-Lite 203 Airlinks Quick Start Guide A concise guide to setting up and using the Monster N-Lite 203 Airlinks wireless earbuds, covering pairing, controls, and basic functions.

