

[Manuals.plus](#) /

> [VEVOR](#) /

> VEVOR Ice Cube Maker Storage Tray LSB250 User Manual

VEVOR LSB250

VEVOR Ice Cube Maker Storage Tray

Model: LSB250

1. INTRODUCTION

This manual provides detailed instructions for the installation, operation, and maintenance of your VEVOR Ice Cube Maker Storage Tray, Model LSB250. This storage tray is designed to complement a commercial ice maker, providing a large capacity solution for ice storage in various commercial and hospitality settings.



Figure 1: VEVOR Ice Cube Maker Storage Tray LSB250 and included accessories.

2. PRODUCT OVERVIEW AND FEATURES

The VEVOR LSB250 Ice Cube Maker Storage Tray is engineered for durability and efficiency, offering robust ice storage capabilities for demanding environments.

2.1 Large Ice Storage Capacity

This commercial ice maker storage tray boasts a substantial capacity, capable of holding up to 250 lb (113.4 kg) of ice, ensuring an adequate supply for high-demand periods.

250 lbs Ice Storage Bin

Store large quantities for immediate use



Large capacity, meets high ice demand for large groups

Figure 2: The spacious interior of the LSB250 ice storage bin, designed for large quantities of ice.

2.2 Superior Insulation

Equipped with built-in cyclopentane foam, measuring at least 25mm thick, and a sturdy stainless steel housing, the tray effectively isolates external heat. This design helps maintain ice temperature, keeping ice cubes cool for 6-8 hours even during power outages.

8 Hours Insulation

Long-term ice storage



Figure 3: Cross-section diagram illustrating the integrated cyclopentane foaming and heavy-duty stainless steel shell for insulation.

2.3 Adjustable Anti-slip Feet

The storage tray features four adjustable rubber feet, providing a height adjustment range of 20mm (0.8 inches). The rubber bottom design offers enhanced stability, anti-slip properties, and shock absorption, protecting your flooring.

Adjustable Anti-slip Feet

Rubber feet for stability and anti-slip



Figure 4: Detail of the adjustable rubber feet, showing the 0.8-inch (20mm) adjustment range.

2.4 Water Drainage and Filtration System

An integrated water filter purifies incoming water, ensuring clean drinking water for ice production. The gravity drainage function facilitates efficient water removal, preventing accumulation and maintaining a hygienic environment.

Water Filter

Equipped with a filtered inlet pipe for clean drinking water



Figure 5: Illustration of the water filter and drainage hose connection for clean water and efficient runoff.

2.5 Additional Thoughtful Designs

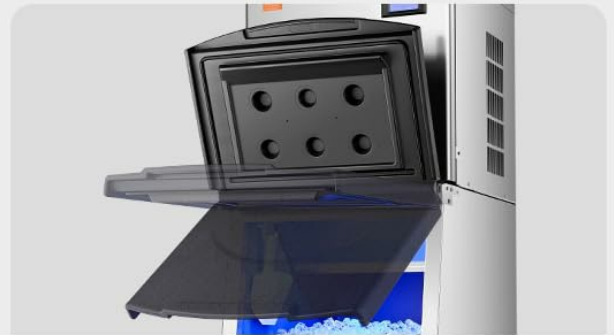
- **Buffer Door:** The lid is designed with a buffer mechanism to prevent sudden closing, reducing noise, vibration, and the risk of injury.
- **Ice Scoop Holder:** An internal hook provides convenient storage for the included ice scoop, keeping it clean and readily accessible.

More Thoughtful Designs



Ice Scoop Holder

Internal hook for hanging the ice scoop



Flip-Top Buffer Door

Effectively avoids pinching

Figure 6: Close-up views of the internal ice scoop holder and the flip-top buffer door mechanism.

3. Box CONTENTS

Please check the package contents upon arrival to ensure all items are present and undamaged. If any items are missing or damaged, contact VEVOR customer support immediately.



Figure 7: Visual representation of the ice bin's dimensions and a complete list of accessories.

- 1 x Ice Storage Tray (LSB250)
- 1 x Filter
- 1 x Filter Mounting Bracket
- 1 x Filter Holder
- 1 x Filter Holder Fixing Screw
- 1 x Filter Water Inlet Hose
- 4 x Feet
- 1 x Drainage Hose
- 1 x Ice Scoop
- 1 x Thread Sealing Tape
- 2 x Adapters

4. SPECIFICATIONS

Attribute	Value
Item Model Number	LSB250
Ice Storage Capacity	250 lb / 113.4 kg
Main Material	Stainless Steel + PE Plastic
Weight	56.9 lb / 25.8 kg
Dimensions (L x W x H)	560 x 680 x 990 mm (22 x 26.8 x 39 inches approx.)
UPC	197988131328

5. SETUP AND INSTALLATION

Proper setup is crucial for the optimal performance and longevity of your ice storage tray. This unit is designed to be paired with a compatible commercial ice maker (sold separately).

- 1. Unpacking:** Carefully remove all components from the packaging. Retain packaging materials for future transport or storage if needed.
- 2. Positioning:** Choose a stable, level surface near your ice maker and a suitable drainage point. Ensure adequate clearance for ventilation and access.
- 3. Install Feet:** Attach the four adjustable feet to the bottom of the ice storage tray. Adjust the height using the threaded mechanism to ensure the unit is level and stable. The adjustable range is approximately 20mm (0.8 inches).
- 4. Filter Installation:**
 - Mount the filter mounting bracket and filter holder in a convenient location, typically near the water inlet.
 - Insert the filter into the holder and secure it with the fixing screw.
 - Connect the filter water inlet hose from your water supply to the filter, and then from the filter to the ice maker's water inlet (if applicable, as this is a storage tray). Ensure all connections are tight using the provided thread sealing tape to prevent leaks.
- 5. Drainage Connection:** Connect the drainage hose to the drainage outlet on the ice storage tray. Route the hose to a floor drain or suitable waste water disposal point. The gravity drainage design requires the drain point to be lower than the tray's outlet for efficient water flow.
- 6. Pairing with Ice Maker:** Carefully position your commercial ice maker (sold separately) on top of the storage tray, ensuring it is securely seated and aligned. Refer to your ice maker's manual for specific pairing instructions.
- 7. Final Checks:** Before operation, double-check all connections for tightness and ensure the unit is stable and level.

6. OPERATION

The VEVOR Ice Cube Maker Storage Tray operates passively, storing ice produced by a connected ice maker. Its primary function is to maintain ice quality and provide easy access.

- 1. Ice Production:** Ensure your ice maker is operating correctly and producing ice. Ice will automatically fall into the storage tray.
- 2. Accessing Ice:** Lift the buffer door to access the ice. Use the provided ice scoop to retrieve ice. Hang the scoop on the internal hook when not in use to maintain hygiene.
- 3. Monitoring Ice Level:** Periodically check the ice level to ensure continuous supply and to avoid overfilling, which could impede the ice maker's function.
- 4. Drainage:** The gravity drainage system will automatically remove melted ice water. Ensure the drainage hose remains

unobstructed and properly routed to the drain.

7. MAINTENANCE

Regular maintenance ensures the hygiene and longevity of your VEVOR Ice Cube Maker Storage Tray.

- **Daily Cleaning:**
 - Wipe down the exterior surfaces with a clean, damp cloth.
 - Ensure the ice scoop is clean and stored properly.
- **Weekly Cleaning (Interior):**
 - Empty any remaining ice.
 - Clean the interior of the storage tray with a mild, food-safe detergent and warm water.
 - Rinse thoroughly with clean water to remove all detergent residue.
 - Allow the interior to air dry completely before refilling with ice.
- **Water Filter Replacement:** The water filter should be replaced periodically, typically every 3-6 months, depending on water quality and usage. Refer to the filter manufacturer's instructions for specific replacement intervals.
- **Drainage System Check:** Periodically inspect the drainage hose for any kinks, blockages, or signs of wear. Ensure it is clear and allows for free flow of water.
- **Feet Inspection:** Check the adjustable feet for stability and ensure they are not loose or damaged.

8. TROUBLESHOOTING

This section addresses common issues you might encounter with your ice storage tray.

Problem	Possible Cause	Solution
Water accumulation in tray	Blocked or kinked drainage hose; improper slope for gravity drain.	Check drainage hose for obstructions and clear them. Ensure the drain point is lower than the tray's outlet.
Ice melting too quickly	Lid not fully closed; damaged insulation; high ambient temperature.	Ensure the lid is securely closed. Inspect insulation for damage. Relocate the unit to a cooler environment if possible.
Unpleasant odor from tray	Lack of regular cleaning; stagnant water.	Perform a thorough interior cleaning as per maintenance instructions. Ensure proper drainage.
Unit unstable/wobbling	Uneven surface; loose adjustable feet.	Adjust the feet to level the unit on the surface. Tighten any loose feet.

9. WARRANTY AND SUPPORT

VEVOR products are designed for reliability and performance. For specific warranty information regarding your LSB250 Ice Cube Maker Storage Tray, please refer to the warranty card included with your purchase or visit the official VEVOR website.

If you encounter any issues that cannot be resolved using the troubleshooting guide, or for parts and service inquiries, please contact VEVOR customer support:

- **Website:** www.vevor.com
- **Customer Service:** Refer to the contact information provided on the VEVOR website or your product documentation.

Please have your model number (LSB250) and purchase date ready when contacting support.

© 2025 VEVOR. All rights reserved.