

[Manuals.plus](#) /

> [Ivifloae](#) /

> Ivifloae Tuya WiFi Smart PC Power Reset Switch User Manual

## Ivifloae Ivifloaemcwopn5xeq

# Ivifloae Tuya WiFi Smart PC Power Reset Switch User Manual

Model: Ivifloaemcwopn5xeq

## INTRODUCTION

---

This manual provides comprehensive instructions for the installation, operation, and maintenance of your Ivifloae Tuya WiFi Smart PC Power Reset Switch. This device allows for remote control of your computer's power and reset functions via a mobile application and voice assistants. Please read this manual carefully before use to ensure proper functionality and safety.

## PRODUCT OVERVIEW

---

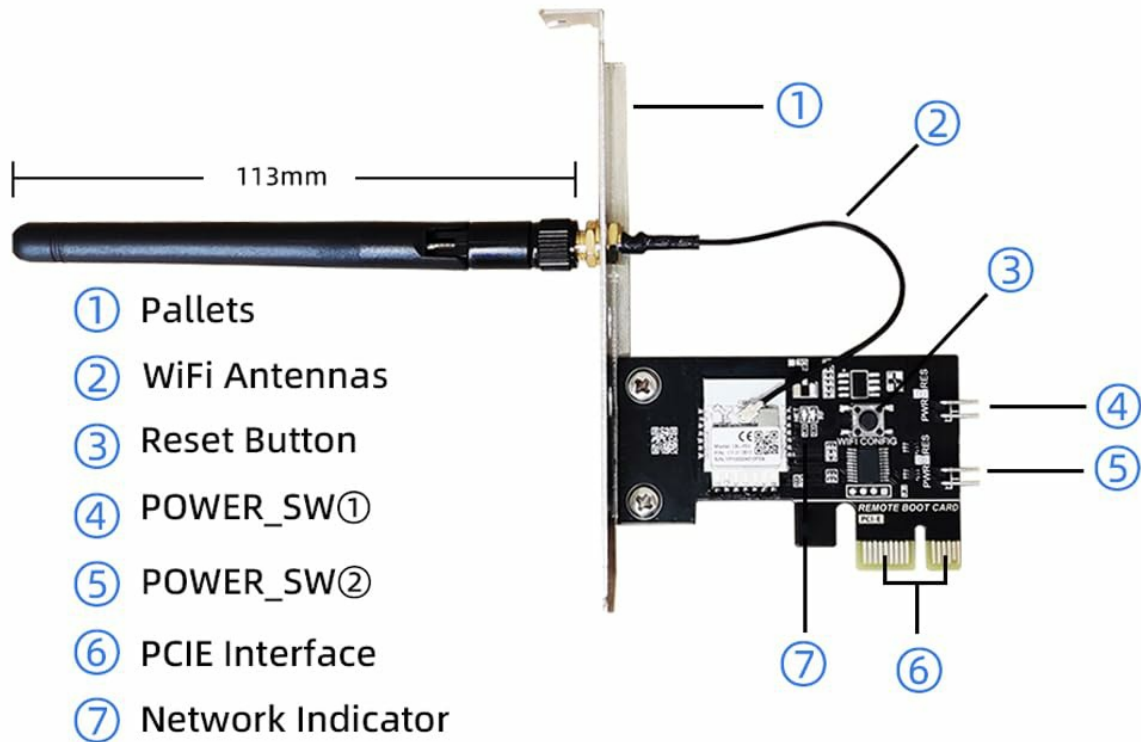
The Ivifloae Tuya WiFi Smart PC Power Reset Switch is a smart device designed to integrate with your computer's power system, enabling remote management capabilities. It connects to your PC via a PCIE slot and uses WiFi for connectivity.



**Image Description:** A view of the Ivifloae Tuya WiFi Smart PC Power Reset Switch, showing the main circuit board, the PCIE connector, and an attached external WiFi antenna.

**Product Components and Diagram:**

# Product Diagram



**Image Description:** A diagram illustrating the components of the smart PC power switch. Key parts are numbered: 1. Pallets, 2. WiFi Antennas, 3. Reset Button, 4. POWER\_SW①, 5. POWER\_SW②, 6. PCIE Interface, 7. Network Indicator. The overall length with antenna is 113mm.

- **1. Pallets:** Mounting bracket for securing the card in a PC case.
- **2. WiFi Antennas:** External antenna for wireless connectivity.
- **3. Reset Button:** Physical button on the card for configuration or reset.
- **4. POWER\_SW①:** Connector for the computer's power switch signal.
- **5. POWER\_SW②:** Connector for the computer's power switch signal.
- **6. PCIE Interface:** Connector for the motherboard's PCIE slot.
- **7. Network Indicator:** LED light indicating network status.

## Key Features:

- **APP Remote Management:** Control your computer's power from anywhere using the Tuya or Smart Life application.
- **Timed Scheduling:** Set schedules for automatic power on/off, offering flexible time management and energy saving.
- **Voice Control:** Compatible with popular voice assistants for hands-free operation.
- **Device Sharing:** Share control with family and friends for multi-user management.

- **Real-time Status Display:** Monitor your computer's power status through the app.
- **Easy Installation:** Direct insertion into a PCIE slot without driver installation.
- **Strong Signal Coverage:** Built-in high-power WiFi antenna ensures stable connection.

## Smart Computer Power Reset Switch

APP Remote Control

Timer & Schedule

Voice Control

Share Control

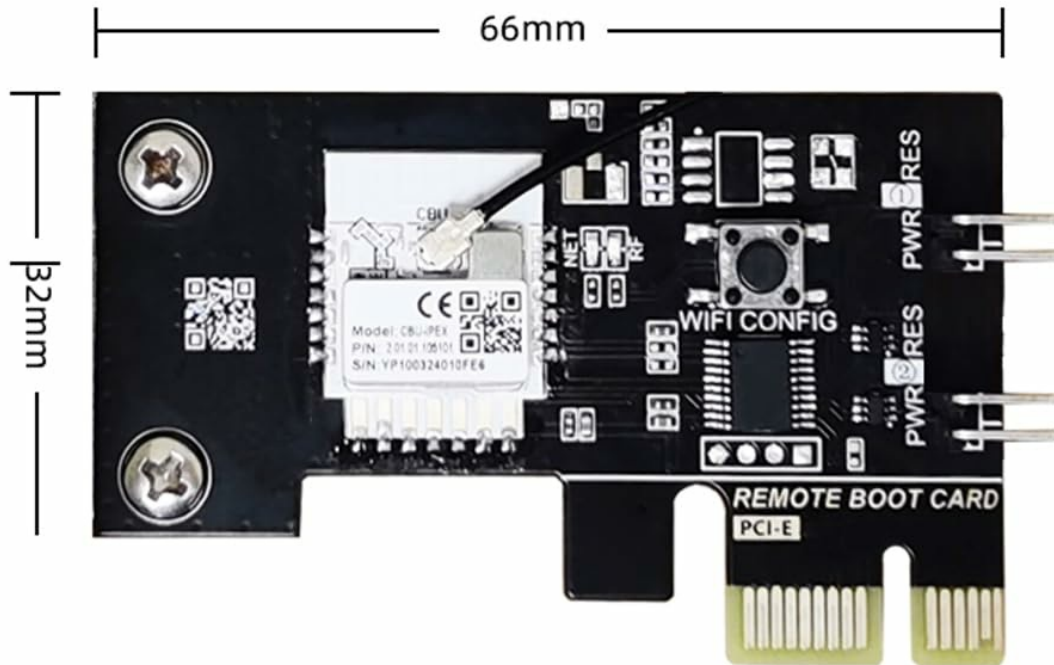
Real time status display

Smart Scene

tuya WiFi works with alexa works with

**Image Description:** An infographic illustrating the main features of the smart PC power switch, including APP Remote Control, Timer & Schedule, Voice Control, Share Control, Real-time status display, and Smart Scene, with icons and product images.

### Product Dimensions:



**Image Description:** A top-down view of the circuit board component of the smart PC power switch, indicating its dimensions: 66mm in length and 32mm in width.

## SETUP INSTRUCTIONS

---

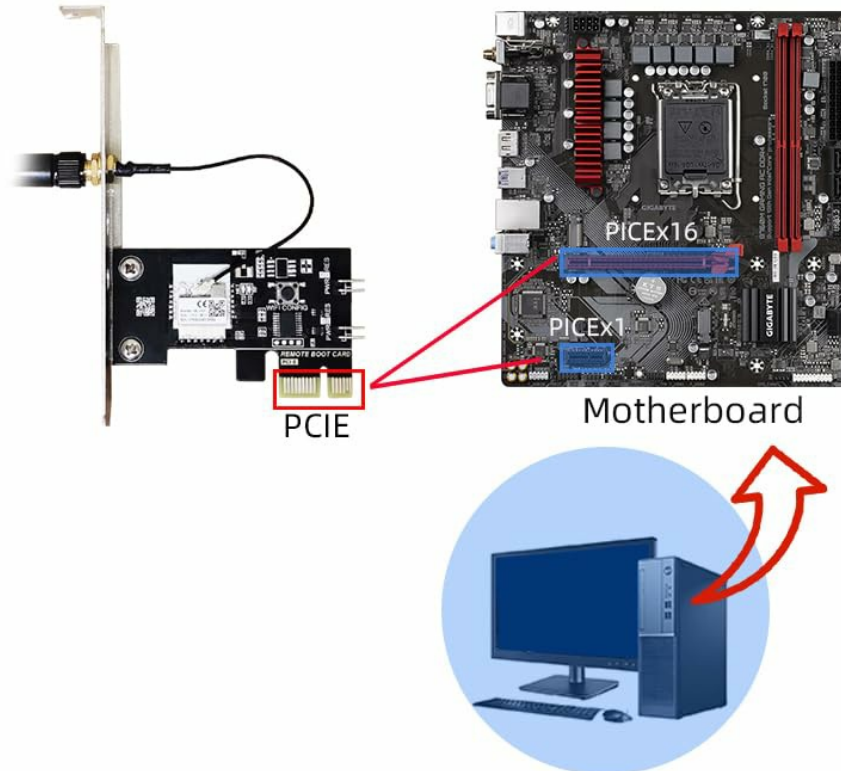
Follow these steps to install and configure your Ivifloae Tuya WiFi Smart PC Power Reset Switch.

### Step 1: Install the PCIE Card

1. Power off your computer and disconnect it from the power source.
2. Open your computer case.
3. Locate an available PCIE slot on your motherboard. The switch supports PCIE x1, x2, x4, x8, and x16 slots.
4. Carefully insert the Ivifloae Smart PC Power Reset Switch into the chosen PCIE slot until it is firmly seated. No drivers are required for this hardware installation.

# Easy to install

Simply plug the switch directly into the PCIE card slot on the computer motherboard, without installing any drivers.



\*Support:PICEx1/PICEx2/PICEx4/PICEx8/PICEx16.

**Image Description:** A diagram showing the smart PC power switch being inserted into a PCIE slot on a computer motherboard, highlighting the compatibility with various PCIE slot types.

## Step 2: Connect the Power and Reset Cables

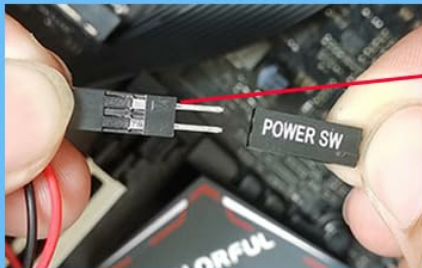
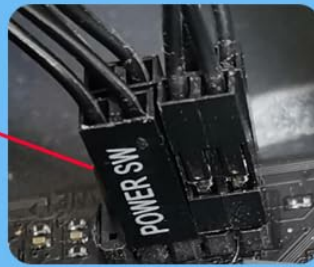
1. Identify your computer's startup cable, usually labeled "POWER\_SW" or "PSW" on the motherboard.
2. Unplug the original POWER\_SW cable from your motherboard.
3. Connect the male interface of the switch's POWER\_SW① cable to the original POWER\_SW header on your motherboard.
4. Connect the female interface of the switch's POWER\_SW② cable to the original computer startup cable that you just unplugged.
5. Repeat this process for the Reset switch cable if your system has one and you wish to control it remotely.

## Step 2

Find the computer startup cable (usually labeled POWER\_SW or PSW); Unplug it and connect to the POWER-SW① male-interface of the switch.

Insert the POWER\_SW② female-interface of the switch into the original position of the computer startup cable.

Computer startup cable  
(POWER\_SW)



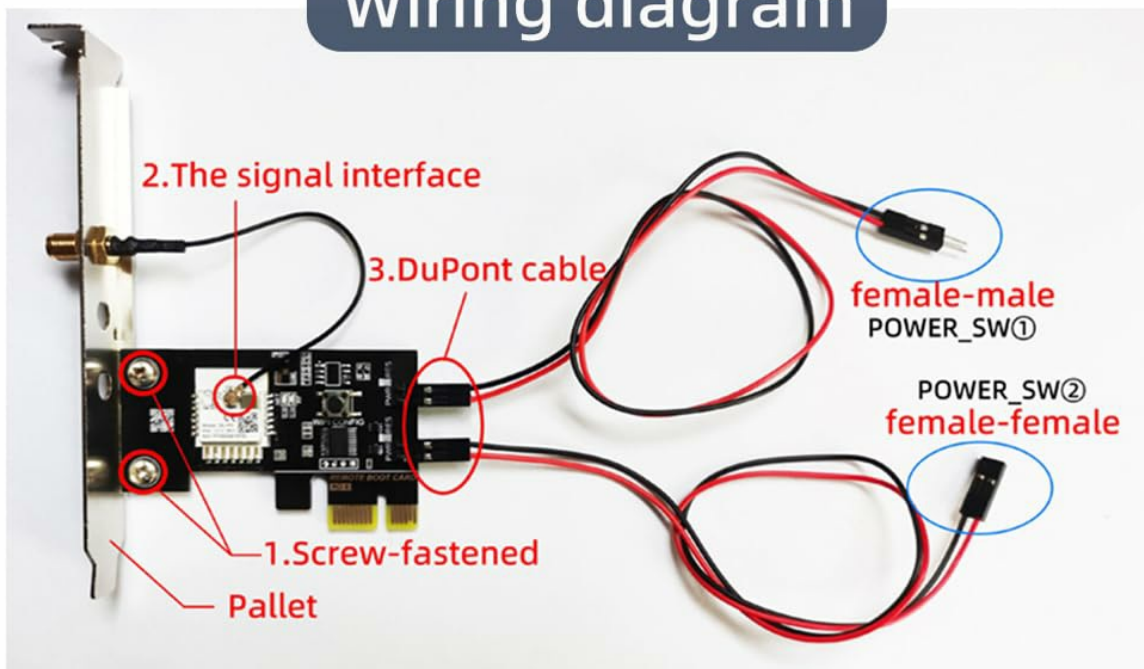
POWER-SW① male-interface

POWER\_SW② female-interface



**Image Description:** A detailed image demonstrating how to connect the smart PC power switch. It shows the computer's original POWER\_SW cable being unplugged and then connected to the switch's male interface, while the switch's female interface connects to the motherboard's POWER\_SW header.

# Wiring diagram



## Specifications

Wi-Fi Standard: Wi-Fi 2.4Ghz b/g/n+Bluetooth

Interface Type: PIC-E

System: Android/ iOS

Control platform:Tuya/Smartlife

**Image Description:** A comprehensive wiring diagram showing the smart PC power switch, its pallet, signal interface, DuPont cables, and the connections for POWER\_SW① (female-male) and POWER\_SW② (female-female) to the motherboard and original power button cables.

### Step 3: Close Case and Power On

1. Close your computer case.
2. Reconnect the power source to your computer and power it on.

### Step 4: App Installation and Pairing

1. Download the "Tuya Smart" or "Smart Life" app from your mobile device's app store (available for Android and iOS).
2. Register or log in to your account.
3. In the app, tap the "+" icon to add a new device.
4. Follow the in-app instructions to put the switch into pairing mode (usually by pressing and holding the WiFi Config button on the switch until the indicator light blinks).
5. Select your 2.4GHz WiFi network and enter the password. The device will connect to your network.
6. Once paired, you can rename the device for easier identification.

## OPERATING INSTRUCTIONS

Once installed and paired, you can control your PC using the mobile app or voice commands.

## App Control:

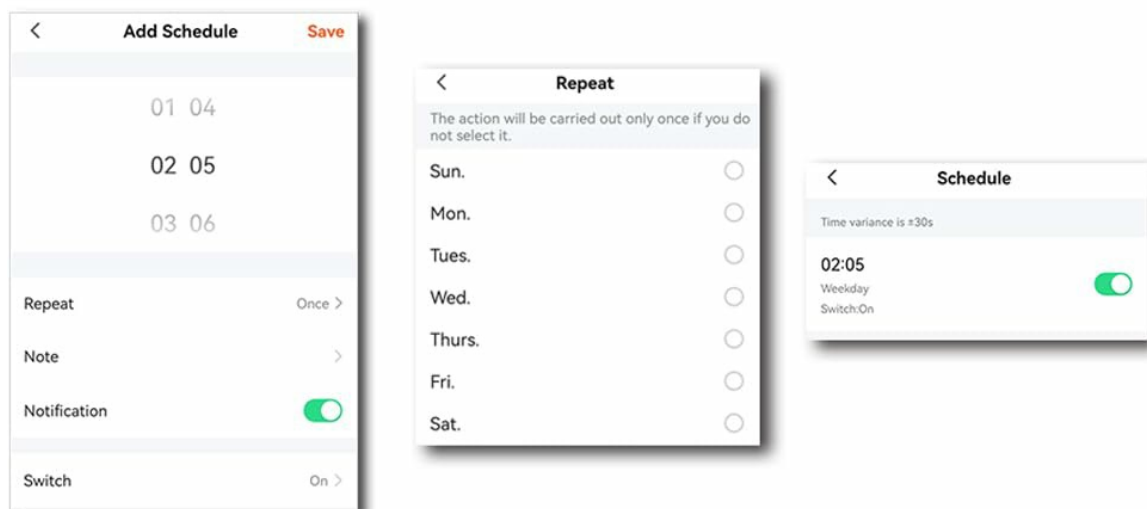
- Open the Tuya Smart or Smart Life app.
- Select your PC power switch from the device list.
- You will see options to power on, power off, or reset your computer.
- The app also provides real-time status monitoring of your computer's power state.
- **Safe Shutdown:** Always use the app's shutdown function to properly turn off your computer to prevent data loss or system damage.

## Timed Scheduling and Countdown:

- Within the app, navigate to the device settings for your PC power switch.
- Select the "Schedule" or "Timer" option.
- You can set specific times for your computer to power on or off automatically.
- Configure repeat options (e.g., daily, specific days of the week).
- A countdown timer can also be set for a one-time power action.

# Timing/countdown

Add timing to achieve automatic power on/off.



Time setting range:00:00-23:59/Mon.-Sun.  
Status setting:on/off

schedules for automatic power on/off. It shows options for setting specific times, repeating schedules for weekdays, and confirming the schedule.

## Voice Control:

- Ensure your Tuya Smart or Smart Life app is linked to your preferred voice assistant (e.g., Amazon Alexa, Google Assistant).
- Use voice commands such as:
  - "Alexa, turn on [Computer Name]."
  - "Hey Google, turn off [Computer Name]."
  - "Alexa, reset [Computer Name]."



**Image Description:** A person relaxing on a couch, using a voice command "Alexa, Turn on the computer." with smart speakers (Google Assistant and Amazon Alexa devices) visible, illustrating the voice control feature.

## Device Sharing:

- In the app, access the device settings and look for the "Share Device" option.
- You can invite other Tuya/Smart Life users to control your PC power switch.

## MAINTENANCE

---

The Ivifloae Tuya WiFi Smart PC Power Reset Switch requires minimal maintenance.

- Ensure your computer's internal environment is clean and free of excessive dust to prevent overheating of components, including the switch.
- Keep the mobile application updated to the latest version for optimal performance and security.
- Periodically check the physical connections of the switch to the motherboard and power/reset cables to ensure they remain secure.

## TROUBLESHOOTING

---

If you encounter issues with your smart PC power switch, refer to the following common solutions:

- **Device Not Responding:**

- Check if your computer is powered on and the switch's network indicator light is active.
- Ensure your mobile device has an active internet connection.
- Verify that the switch is connected to a 2.4GHz WiFi network. 5GHz networks are not supported.
- Restart your WiFi router and try reconnecting the device through the app.
- If the issue persists, try re-pairing the device with the app.

- **Cannot Power On/Off PC:**

- Confirm that the POWER\_SW cables are correctly connected to both the motherboard header and the original power button cable. Refer to "Step 2: Connect the Power and Reset Cables" in the Setup section.
- Ensure the switch is firmly seated in the PCIE slot.
- Test your computer's physical power button to confirm the PC itself is functional.

- **Voice Control Not Working:**

- Verify that your Tuya/Smart Life account is correctly linked to your voice assistant (Alexa, Google Assistant).
- Check the device name in your voice assistant app; ensure it matches the name you are using in your commands.
- Ensure your voice assistant device is connected to the internet.

- **Intermittent Connection:**

- The switch has a high-power antenna, but extreme distances or thick walls can still affect signal. Try moving your WiFi router closer or using a WiFi extender.
- Ensure there are no other devices causing significant interference on the 2.4GHz band.

## SPECIFICATIONS

---

Feature	Detail
Model Number	Ivifloaemcwopn5xeq
Material	Printed Circuit Board, Copper, Brass
WiFi Standard	WiFi 2.4GHz b/g/n + Bluetooth
Interface Type	PCIE (Compatible with PCIE x1/x2/x4/x8/x16)

<b>System Compatibility</b>	Android / iOS
<b>Control Platform</b>	Tuya / Smart Life
<b>Item Size</b>	66mm x 32mm (Circuit Board)
<b>Operating Voltage</b>	12 Volts
<b>Current Rating</b>	0.01 Amps
<b>Operation Mode</b>	Automatic
<b>Control Method</b>	Remote, Touch, Voice

## WARRANTY INFORMATION

---

Specific warranty details for the Ivifloae Tuya WiFi Smart PC Power Reset Switch are not provided in the product information. Please refer to the retailer or manufacturer's website for current warranty terms and conditions.

## SUPPORT

---

For technical support or further assistance, please contact the manufacturer or your point of purchase. Refer to the product packaging or the retailer's website for contact information.