

LIGE FV13-D (black metal + black silicone)

LIGE Military Smart Watch FV13 User Manual

Brand: LIGE

INTRODUCTION

The LIGE Military Smart Watch FV13 is engineered for robust performance and versatile functionality, designed to meet the demands of an active lifestyle. Featuring a large 1.85-inch Ultra-HD touchscreen, military-grade durability, and extensive health and fitness tracking capabilities, this smartwatch is your reliable companion for daily activities and extreme conditions. This manual provides essential information for setup, operation, and maintenance to ensure optimal performance of your device.



Image: The LIGE Military Smart Watch FV13, showcasing its large display and two strap options (metal and silicone).

WHAT'S IN THE BOX

Upon unboxing your LIGE Military Smart Watch FV13, please verify that all the following components are included:

- LIGE SMARTWATCH FV13 x 1
- BLACK STAINLESS STEEL STRAP x 1
- BLACK SILICONE STRAP x 1
- PRODUCT MANUAL x 1
- CUSTOMER CARD x 1
- MAGNETIC CHARGING CABLE x 1
- STRAP ADJUSTER x 1

Your browser does not support the video tag.

SETUP

1. Initial Charging

Before first use, fully charge your smartwatch. Connect the magnetic USB charging cable to the charging points on the back of the watch. Connect the USB end to a compatible power adapter (not included). A full charge takes approximately 2 hours. The watch features a 710mAh military-grade pure cobalt battery, offering up to 80 days of standby or 15+ days of active use.

710mAh Big Battery

Ultra-long battery life, noneed to worry about powerwhen you are outdoor exercising or camping.



	Extra Large Battery 710 mAh	Large Battery 300-500 mAh	General Battery 150-220 mAh
Heavy Usage	7 Days↑	3-4 Days	1-2 Days
Daily Usage	14+ Days↑	7 Days	3-4 Days
Low-battery Mode	100+ Days↑	50-60 Days	10-30 Days

Image: Illustration of the 710mAh large battery capacity and its long endurance.

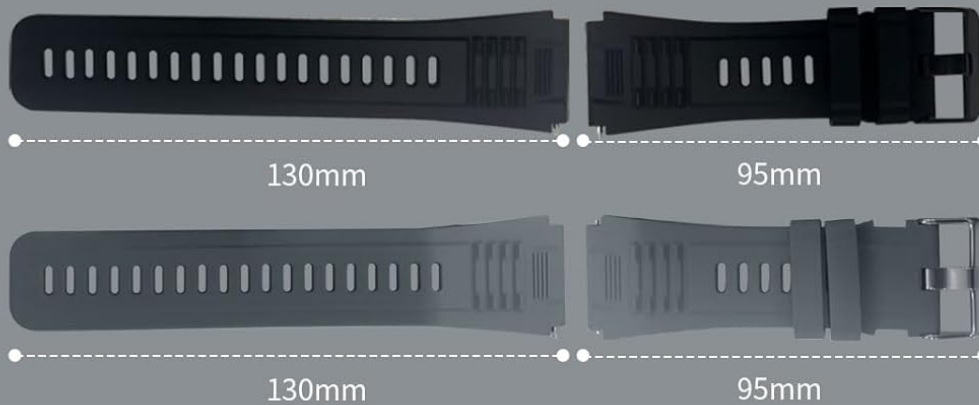


Image: The smartwatch connected to its magnetic charging cable.

2. Strap Installation

Your smartwatch comes with interchangeable stainless-steel and hypoallergenic liquid-silicone straps. Use the provided strap adjuster tool to fit the metal strap to your wrist, or easily swap to the silicone strap for different activities. The quick-release pins allow for easy attachment and detachment of the straps.

Product Size



Smartwatch is the perfect surprise for your father/boyfriend/friend.



Image: Product dimensions and illustration of the two included strap types.

3. App Installation and Pairing

To unlock the full potential of your smartwatch, download the "FitCloudPro" companion app from your smartphone's app store. The app is compatible with Android 4.4+ and iOS 9.0+ devices. Follow the in-app instructions to pair your watch via Bluetooth 5.0. Ensure Bluetooth is enabled on your phone and the watch is discoverable.

OPERATING INSTRUCTIONS

1. Display and Navigation

The smartwatch features a 1.85-inch circular Ultra-HD touchscreen with 360x360 resolution. Navigate through menus and functions by swiping across the screen and tapping icons. The optimized touch-sensitive zone ensures smooth interaction.

1.85 inch HD large screen

360*360 resolution, ultra-clear display and smooth operation



huge
screen



360*360
Pixels



Eye-Caring

Image: Close-up of the 1.85-inch HD large screen display.

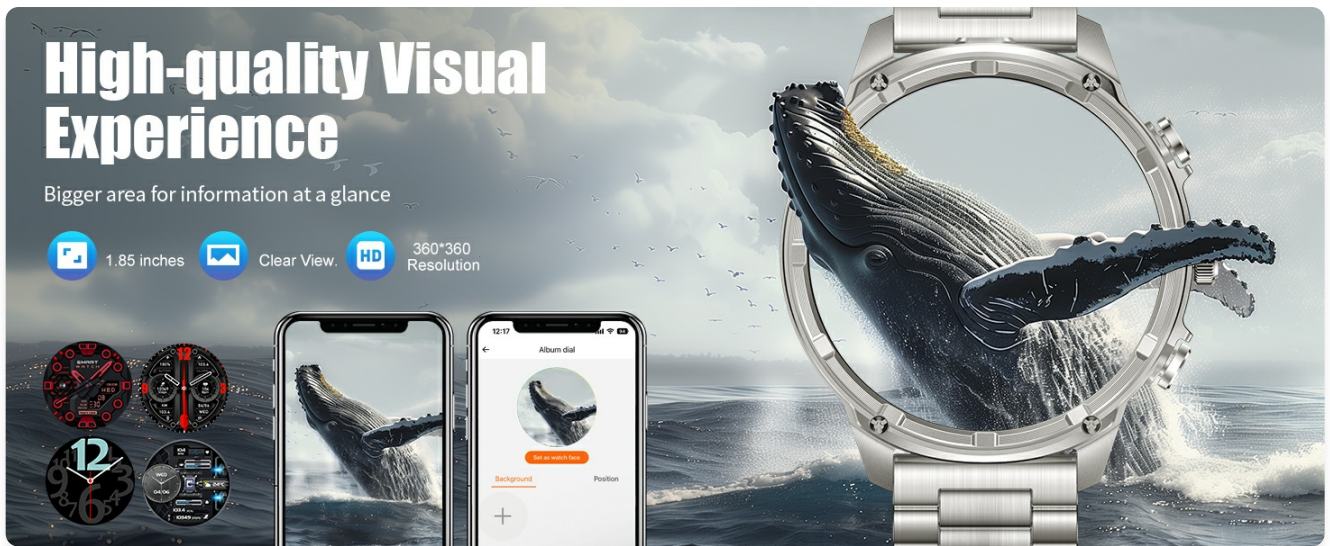


Image: Demonstrates the high-quality visual experience of the watch display.

2. Flashlight Function

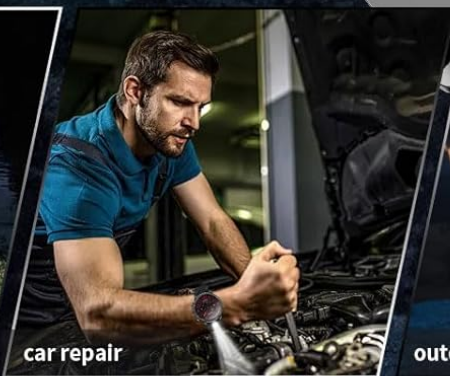
The FV13 integrates a powerful 12-point LED array, projecting a 20-meter hyper-focused beam. Access the flashlight function through the watch's menu. A dedicated tactical button allows for instant activation. This feature is ideal for low-light conditions or emergencies.

Linterna LED Potente

Whether for outdoor sports at night or for indoor lighting, it helps you illuminate every corner.



Outdoor activities
at night



car repair



outdoor camping

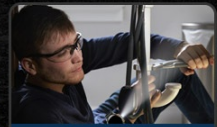
Image: The smartwatch highlighting its integrated LED flashlight feature.

LED Strong Flashlight

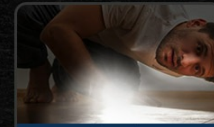
*Note: DO not direct the light towards eyes.



Outdoor activities at night



Power Outage



Finding Things



High Light Mode



Flash Mode



SOS Mode

Image: The smartwatch's strong LED flashlight in various usage scenarios.

Your browser does not support the video tag.

Video: Demonstrates the LED flashlight feature of the LIGE Military Smart Watch FV13.

3. Bluetooth Calling & Notifications

With Bluetooth 5.0 connectivity, you can store key contacts, answer calls directly from your wrist using the Hi-Fi stereo speakers and noise-isolating microphone, and receive real-time notifications from popular apps like WhatsApp, Facebook, and Instagram. This feature is convenient for workouts or when your phone is not easily accessible.

BLUETOOTH HD VOICE CALLS

Free your hands and make voice calls at anytime and anywhere



Contacts



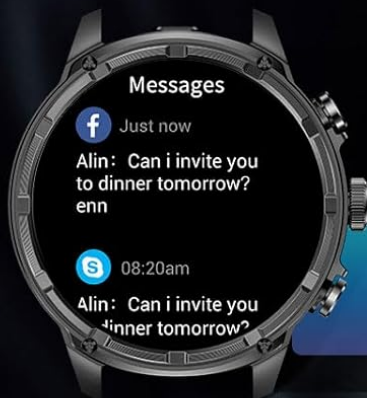
Dial Pad



Make &
Receive Calls



Jimmy: What are you going to do tomorrow?



Receive realtime message notifications from social software APP



Image: The smartwatch displaying Bluetooth HD voice call and message notification features.



Image: A user making a call from the smartwatch while driving, emphasizing connectivity.

4. AI Voice Control & Music Control

Activate the AI voice assistant to dial numbers, play music, or manage tasks hands-free. The watch also allows for direct music control from your wrist, enabling you to play, pause, skip tracks, and adjust volume without needing to access your phone.

5. Customizable Watch Faces & Brightness

Personalize your watch with over 200 curated watch faces available through the "FitCloudPro" app, or upload your own photos for a unique look. The display offers five adjustable brightness levels, ensuring clear visibility in various lighting conditions, from bright sunlight to complete darkness.



Image: Various customizable watch faces available for the smartwatch.

FITNESS TRACKING

1. 100+ Sport Modes

The FV13 supports over 100 professional sports modes, including running, hiking, cycling, gym training, yoga, and mountaineering. It offers seamless indoor and outdoor adaptability to cater to comprehensive workout demands. All health metrics synchronize with the "FitCloudPro" app for detailed analysis.

100+ SPORTS MODES

Make the most of every sporting activity

Calorie

Distance

Step

6550/7000 Steps

95%

Distance

2.6/5 Km

24 hours steps

7 days of s

05/18

05/17

05/16

05/15

05/14

05/13

05/12

Average

8600 Steps

Exercise record

532 Kcal

18:22

3.86 Km

08/19

3.86 Km

04/25

The image features a cyclist in a blue jersey and helmet riding a road bike. Overlaid on the image are several elements: a large blue 'S' shape with icons for Calorie (flame), Distance (location pin), and Step (footprints); a smartphone displaying step count (6550/7000), distance (2.6/5 Km), and a 24-hour step bar chart; a smartwatch showing an exercise record with calorie burn (532 Kcal), distance (3.86 Km), and a 7-day step average (8600 Steps); and a vertical blue bar on the right containing 10 white icons representing various sports activities: running, swimming, hiking, roller skating, skateboarding, basketball, tennis, cycling, and skiing.

Image: A user cycling, illustrating the 100+ sports modes feature.

100+ SPORTS MODES

Take the Smart Watch, Explore the Whole Wide World



cycling



surfing



hiking



Image: Icons representing various sports modes supported by the smartwatch.

2. Comprehensive Health Monitoring

Powered by the VP60 A2 bio-tracking optical sensor, the watch delivers real-time monitoring of heart rate, step count, distance, calorie expenditure, and exercise duration. It also includes sleep monitoring, sedentary reminders, and drink water alerts to help you maintain a healthy lifestyle.

24-Hour Heart Rate Tracking

DAY

Night

24h Activity Tracker



Heart Rate



Blood Pressure



Blood Oxygen

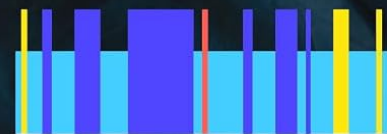


Record

Sleep Tracker



Sleep Monitor



22: 00

6: 25

More Special Features



Image: Visual representation of 24-hour heart rate tracking and sleep tracking features.

Your Personal Sports Companion

be smart about your heart with ecg monitoring that gives accurate readings

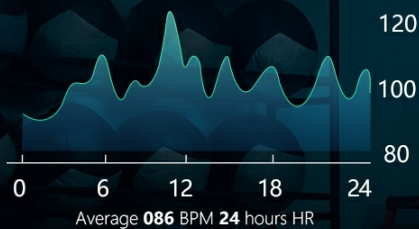
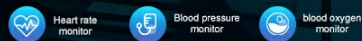


Image: Health monitoring features including heart rate, blood pressure, and blood oxygen.

Sleep Monitoring

Automatic sleep monitoring function, helping you understand sleep quality and adjust your daily routine.



Sleep Hour 08h30min



Image: Detailed sleep monitoring data displayed on the watch.

24/7 Health Monitor



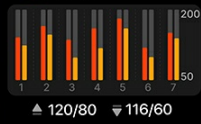
Heart rate

150 BPM



Blood pressure

120/80 MMHG



Blood oxygen

99%



Image: Visuals of 24/7 heart rate, blood pressure, and blood oxygen monitoring.

1. Durability and Water Resistance

The LIGE FV13 is MIL-STD-810H certified, having conquered 15 extreme trials including cryogenic freezes and desert infernos. Its 9H sapphire-hardened glass, aerospace-grade aluminum alloy framing, and carbon-fiber composite caseback provide 300% impact resistance. The hermetic 5ATM waterproof architecture withstands 50-meter depths, making it suitable for swimming and various water activities.



Image: Highlights the military-grade quality and resistance to various elements.



Image: A user surfing, demonstrating the 5ATM deep waterproof capability.

2. Cleaning and Care

Regularly clean your smartwatch and straps with a soft, damp cloth. Avoid using harsh chemicals or abrasive materials. Ensure the charging contacts are clean and dry before charging. While the watch is highly durable and waterproof, prolonged exposure to extreme temperatures or corrosive liquids should be avoided to maintain its longevity.

TROUBLESHOOTING

- **Battery Drains Quickly:** Ensure background apps on the watch are closed. Reduce screen brightness. Disable unnecessary notifications. If weather forecast is enabled, ensure the "FitCloudPro" app runs continuously in the

background on your phone for real-time updates, which may consume more battery.

- **Notifications Not Received:** Check Bluetooth connection between the watch and your phone. Ensure notification permissions are granted for the "FitCloudPro" app in your phone's settings. Verify that app-specific notifications are enabled within the "FitCloudPro" app.
- **Watch Not Turning On:** Ensure the watch is fully charged. If it doesn't respond, try connecting it to the charger for at least 30 minutes.
- **Inaccurate Step Count:** Ensure the watch is worn snugly on your wrist. Arm movements not associated with walking (e.g., typing) can sometimes be misinterpreted as steps.
- **Connectivity Issues:** Try unpairing and re-pairing the watch with your phone. Restart both your phone and the smartwatch. Ensure both devices are within Bluetooth range.

SPECIFICATIONS

Feature	Detail
Brand	LIGE
Model Number	FV13-D (black metal + black silicone)
Screen Size	1.85 Inches
Screen Resolution	360x360
Battery Capacity	710 mAh Lithium Polymer
Battery Life (Active Use)	15+ Days
Battery Life (Standby)	80 Days
Charging Time	Approx. 2 Hours
Waterproof Rating	5ATM (up to 50 meters)
Durability Standard	MIL-STD-810H Certified
Connectivity	Bluetooth 5.0
Operating System Compatibility	Android 4.4+ and iOS 9.0+
Memory Storage Capacity	128 MB
Item Weight	9.9 ounces
Product Dimensions	2.36 x 0.79 x 1.18 inches

WARRANTY AND SUPPORT

Your LIGE Military Smart Watch FV13 comes with a standard manufacturer's warranty. Please refer to the included Customer Card for specific warranty terms and conditions. For technical support, troubleshooting assistance, or any inquiries regarding your product, please contact LIGE customer service through the contact information provided on the Customer Card or visit the official LIGE website.