

Wyklaus OP-002

Wyklaus 5-in-1 Electric Head Shaver (Model OP-002) User Manual

1. INTRODUCTION

Thank you for choosing the Wyklaus 5-in-1 Electric Head Shaver. This manual provides essential information for the safe and effective use, maintenance, and care of your new grooming device. Please read it thoroughly before first use and retain it for future reference.

2. SAFETY INFORMATION

To ensure safe operation and prevent injury or damage, please observe the following precautions:

- Keep the device away from water sources when charging.
- Do not immerse the charging cable or adapter in water.
- Ensure the charging port is dry before connecting the USB cable.
- This appliance is not intended for use by persons with reduced physical, sensory, or mental capabilities, or lack of experience and knowledge, unless they have been given supervision or instruction concerning use of the appliance by a person responsible for their safety.
- Children should be supervised to ensure that they do not play with the appliance.
- Only use the provided charging cable or a compatible USB cable for charging.
- Do not disassemble or attempt to repair the shaver yourself. Contact qualified personnel for service.
- Avoid using the shaver on irritated, damaged, or infected skin.

3. PACKAGE CONTENTS

Your Wyklaus 5-in-1 Electric Head Shaver package includes the following items:

- 1 x Head Shaver (main unit)
- 1 x Hair Trimmer attachment
- 1 x Nose Hair Trimmer attachment
- 1 x Cleansing Brush attachment
- 1 x Sideburn Trimmer attachment
- 3 x Hair Trimmer Combs (3mm, 5mm, 7mm)

- 1 x USB Charging Cable
- 1 x Cleaning Brush

4. PRODUCT OVERVIEW

The Wyklus 5-in-1 Electric Head Shaver is designed for versatile grooming. It features a 7D floating shaving head, double-layer durable blades, an LED intelligent display, and is IPX6 waterproof for wet and dry use.



The Wyklus 5-in-1 Electric Head Shaver in Deep Blue, showcasing its ergonomic design and multiple rotary blades.

7 BLADE HEAD SHAVER



More Suitable for Your Facial Contours
Enjoy a clear and smooth shave



360° Floating Shaving



Increase the Shaving Area



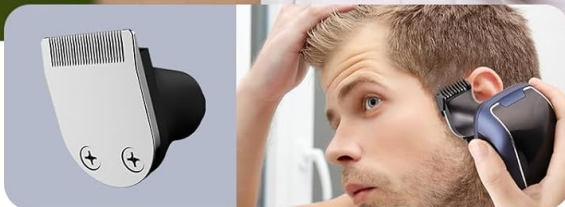
Ours



Other

A visual representation of the 7-blade shaving head, highlighting its 360-degree floating action for adapting to facial and head contours, and increased shaving area compared to standard 5-blade designs.

MULTIPLE ATTACHMENTS CHANGE IN SECONDS



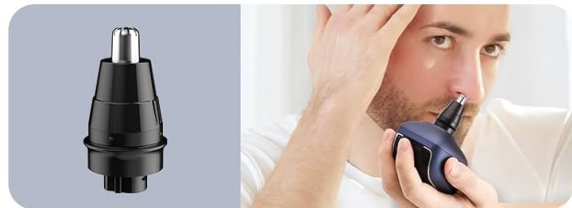
Hair Trimmer



Sideburns Trimmer



Cleansing Brush



Nose Hair Trimmer

An image displaying the interchangeable attachments included in the 5-in-1 grooming kit: hair trimmer, sideburns trimmer, cleansing brush, and nose hair trimmer.



A detailed view of the shaver's LED intelligent display, indicating battery power percentage, low battery warning, cleaning reminder, and travel lock status.

Your browser does not support the video tag.

This video illustrates the features and usage of the Wyklaus 5-in-1 Electric Head Shaver, including its wet and dry shaving capabilities, 7D floating head, and easy cleaning process.

5. SETUP

5.1 Initial Charging

1. Before first use, fully charge the shaver.
2. Connect the USB charging cable to the shaver's charging port and to a compatible USB power source (e.g., USB charger, power bank, car charger, PC).
3. The LED display will show the battery percentage during charging. A full charge typically takes 2 hours and provides approximately 60 minutes of working time.
4. Disconnect the shaver once fully charged.

Easy to Carry Anywhere

60 Mins of Running Time | 120 Mins of Running Time

CORDLESS & TYPE-C RECHARGEABLE

USB Charger Power Bank Car Charger PC

The Wyklaus head shaver connected to a USB-C charging cable, demonstrating its cordless and rechargeable nature, compatible with various USB power sources.

5.2 Attaching/Detaching Heads

To change attachments:

1. Ensure the shaver is turned off.
2. Grip the main unit firmly and gently pull the current attachment head upwards to detach it.
3. Align the desired attachment head with the main unit and press down until it clicks securely into place.

6. OPERATING INSTRUCTIONS

6.1 Using the Head Shaver

The 7D floating shaving head is designed to adapt to the contours of your head, face, and neck for a smooth shave.

- **Dry Shave:** For a quick shave, ensure your skin is clean and dry. Gently move the shaver in circular motions over the desired area.
- **Wet Shave:** For a closer and more comfortable shave, apply shaving foam or gel to soften the

stubble. Move the shaver in circular motions. The shaver is IPX6 waterproof, allowing for use in the shower.

6.2 Using Other Attachments

- **Hair Trimmer:** Attach the hair trimmer head. Select a comb (3mm, 5mm, or 7mm) and slide it onto the trimmer. Use for precise trimming of hair to desired length.
- **Nose Hair Trimmer:** Attach the nose hair trimmer head. Gently insert the trimmer into your nostril or ear and move it in a circular motion to remove unwanted hair.
- **Cleansing Brush:** Attach the cleansing brush head. Apply a small amount of facial cleanser to your face or the brush. Gently move the brush in circular motions to cleanse your skin.
- **Sideburn Trimmer:** Attach the sideburn trimmer head. Use for shaping sideburns, beard lines, or other precise detailing.

6.3 Travel Lock Function

To prevent accidental activation during travel, the shaver features a travel lock:

- **Activate:** Long press the power switch button for 3 seconds. A lock icon will appear on the LED display.
- **Deactivate:** Long press the power switch button for 3 seconds again. The lock icon will disappear, and the shaver will be ready for use.

7. MAINTENANCE AND CLEANING

Regular cleaning ensures optimal performance and extends the lifespan of your shaver.

7.1 Rinsing the Shaver

The entire body of the shaver is IPX6 waterproof, allowing for easy rinsing.

1. After each use, turn off the shaver.
2. Detach the shaving head from the main unit.
3. Rinse the shaving head and the main unit under running water to remove hair clippings and residue.

EASY TO CLEAN

IPX6 Waterproof, Washable
and Water-resistance



The shaver head detached and being rinsed under running water, illustrating its IPX6 waterproof design and ease of cleaning with the included brush.

7.2 Deep Cleaning the Shaving Head

For a more thorough cleaning of the 7D shaving head:

1. Detatch the shaving head.
2. Gently pull up each of the six outer blade covers.
3. Twist the central blade counter-clockwise to remove it.
4. Use the provided small cleaning brush to remove any trapped hair from the blades and inside the head.
5. Rinse all components under running water.
6. Allow all parts to air dry completely before reassembling.
7. Reassemble by reversing the steps: insert the central blade and twist clockwise, then snap the outer blade covers back into place.

7.3 Cleaning Other Attachments

Rinse all other attachments under running water after each use. Use the cleaning brush for stubborn hair or debris. Ensure they are completely dry before storage.

8. TROUBLESHOOTING

Problem	Possible Cause	Solution
Shaver does not turn on.	Battery is depleted. Travel lock is activated.	Charge the shaver. Deactivate the travel lock by long-pressing the power button for 3 seconds.
Poor shaving performance / pulling hair.	Blades are dull or clogged with hair. Battery is low.	Clean the shaving head thoroughly. Ensure the shaver is fully charged. Consider replacing the shaving head if blades are dull.
Shaver stops working shortly after unplugging, even if display shows charge.	Battery issue.	Ensure the shaver is charged with the correct cable. If the problem persists, contact customer support for assistance.
Water washing reminder icon is displayed.	Indicates the shaver head needs cleaning.	Clean the shaver head as described in the Maintenance section.

9. SPECIFICATIONS

- **Model Name:** OP-002
- **Brand:** Wyklus
- **Product Dimensions:** 4.8 x 3.82 x 7.4 inches
- **Item Weight:** 15.2 ounces
- **Battery:** 1 Nonstandard Battery (included)
- **Charging Time:** Approximately 2 hours
- **Working Time:** Approximately 60 minutes
- **Waterproof Rating:** IPX6
- **Special Features:** Anti-Scratch, Battery Indicator, Cordless, Detachable Head, Fast Charging
- **Number of Blades:** 2 (per rotary head, total 7 rotary heads)

10. WARRANTY AND SUPPORT

For warranty information or technical support, please refer to the product packaging or contact Wyklus customer service directly. Keep your purchase receipt as proof of purchase.