



Manuals.plus /

› DREAME /

› DREAME AirStyle Pro 7-in-1 Hair Styler & High Speed Dryer User Manual

## DREAME AMF18A

# DREAME AirStyle Pro 7-in-1 Hair Styler & High Speed Dryer User Manual

Model: AMF18A

## IMPORTANT SAFETY INFORMATION

---

Please read all safety instructions carefully before using the DREAME AirStyle Pro. Failure to follow these instructions may result in electric shock, fire, or serious injury.

- Keep out of reach of children.
- Do not use while bathing or near water.
- Unplug the hair dryer when not in use.
- Keep the power cord and plug away from heated surfaces to prevent fire risks.
- Always use the hair dryer on the lowest heat setting to prevent overheating and potential burns.

## PRODUCT OVERVIEW AND COMPONENTS

---

The DREAME AirStyle Pro is a versatile 7-in-1 hair styler and high-speed dryer designed for various hair types and styling needs. It features a powerful motor and a range of magnetic attachments for curling, smoothing, volumizing, and fast drying.



Figure 1: DREAME AirStyle Pro with all included attachments and storage box.

## Package Contents:

1. **Power Cord with Handle:** The main styling unit with integrated power cord.
2. **Auto-Wrap Barrel (1.26in) x2:** For creating curls in both inward and outward directions.
3. **Soft Smoothing Brush x1:** Ideal for fine or delicate hair, tames flyaways and adds natural shine.
4. **Hard Smoothing Brush x1:** Designed for thick or coarse hair, smooths frizz and offers sleek results.
5. **Round Volumizing Brush x1:** Boosts volume at the roots for an airy, lifted look.
6. **Flyaway Attachment x1:** Targets stubborn baby hairs and frizz for a smooth, high-shine finish.
7. **Fast Dryer x1:** For rapid hair drying.

8. Air Intake Filter Cleaning Brush x1: For maintaining the device.

9. Soft Pebbled Leather Textured Box x1: For storage and transport.

User Guide x1: This manual.

# Package List

Fast Dryer x1

Flyaway Attachment x1

Auto-Wrap Barrel (1.26in) x2

Power Cord with the Handle x1

Hard Smoothing Brush x1

Soft Smoothing Brush x1

Round Volumizing Brush x1

Soft Pebbled Leather Textured Box x1

Air Intake Filter Cleaning Brush x1

User Guide x1

**Gift** **Fashion Meets Function**

A nice gift for every special day.

Figure 2: Detailed view of the DREAME AirStyle Pro package contents.

Before first use, ensure all packaging materials are removed. The DREAME AirStyle Pro is designed for easy assembly and use.

1. **Unpack:** Carefully remove the main unit and all attachments from the leather textured box.
2. **Connect to Power:** Plug the power cord into a standard 120-volt electrical outlet. The device features a built-in GFCI breaker system for safety.
3. **Attach Accessories:** Select the desired attachment. Align the attachment with the main unit and gently twist until it clicks securely into place. The magnetic design ensures a firm connection.

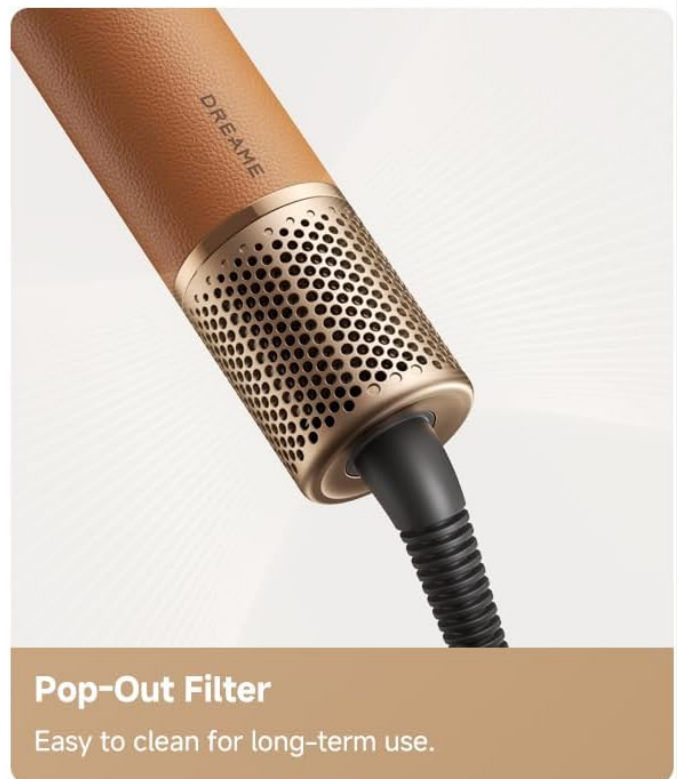
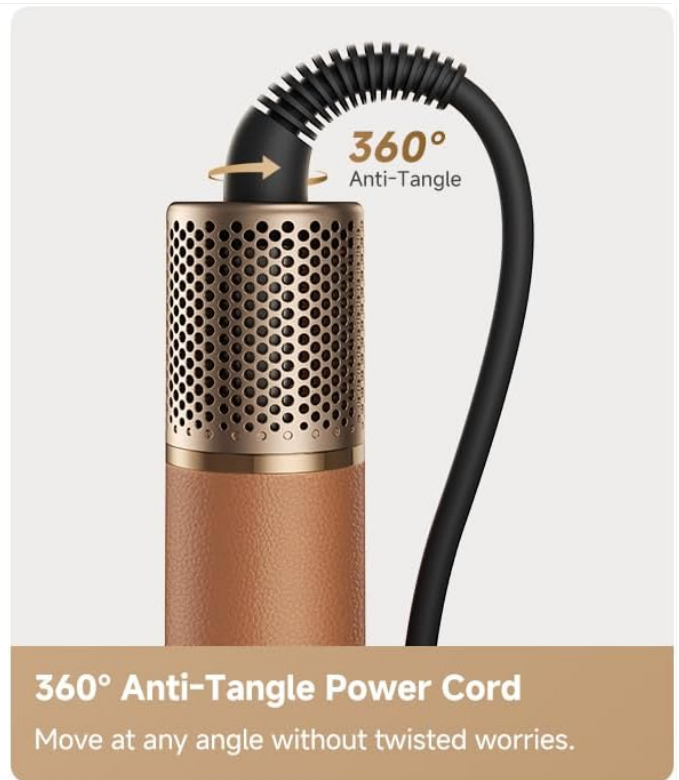
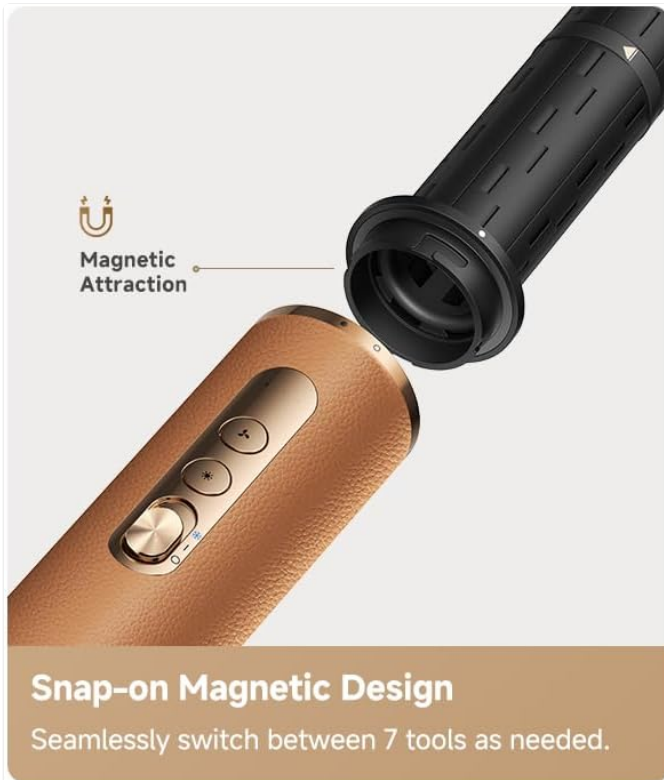


Figure 3: Magnetic attachment mechanism and control panel.

## OPERATING INSTRUCTIONS

---

The DREAME AirStyle Pro offers multiple styling options. Familiarize yourself with the controls and attachments for optimal results.

### General Operation:

- **Power On/Off:** Use the main switch on the handle to turn the device on or off.
- **Adjustable Heat & Airflow:** The device features three heat levels and three airflow levels. Use the dedicated buttons on the handle to select your desired settings.
- **Cool Shot:** Press the cool shot button (or push the main switch further up) to instantly deliver a burst of cool air. This helps to set your style and lock in moisture.

### Using the Attachments:

#### 1. Fast Dryer Attachment

This attachment is designed for rapid drying of wet hair. Its high-speed airflow significantly reduces drying time.

# Fast Drying, No Damage

High-speed airflow saves your drying time, while smart temperature control protects hair for a healthier shine.

 **2X**  
Faster



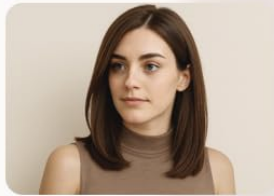
Short Hair



40 Seconds



Medium Length



2 Mins



Long Hair



4 Mins



\*Based on tests in our in-house lab. Actual performance may vary.

**Figure 4:** Fast drying with the dedicated attachment.

**Usage Tip:** For best styling results with other attachments, dry your hair to approximately 80% dry before proceeding.

## 2. Auto-Wrap Barrels (1.26in)

These barrels utilize the Coanda effect to automatically wrap hair around the barrel, creating curls with minimal effort. Two barrels are included for curling in different directions (clockwise and counter-clockwise).

**Before**

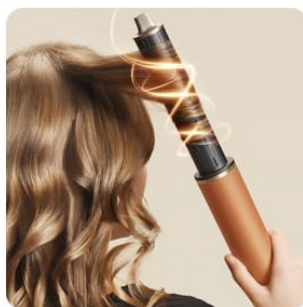


**After**



## Instant Curls, Zero Effort

Delivers 360° airflow for each strand, ensuring smooth salon curls in just 1 second.



Outward  
Curl

Inward  
Curl



**Figure 5:** Achieving curls with the Auto-Wrap Barrels.

1. Ensure hair is 80% dry.
2. Select the appropriate barrel for your desired curl direction (inward or outward).
3. Hold a section of hair near the barrel. The air will automatically attract and wrap the hair.
4. Hold for a few seconds until the curl forms, then use the cool shot to set.

### 3. Soft Smoothing Brush

Ideal for fine or delicate hair, this brush tames flyaways and enhances natural shine, leaving a soft, polished finish.



## Soft Smoothing Brush

Ideal for fine or delicate hair, it tames flyaways and adds natural shine—leaving a soft, polished finish.



Figure 6: Smoothing hair with the Soft Smoothing Brush.

### 4. Hard Smoothing Brush

Designed for thick or coarse hair, this brush smooths frizz with firm tension, offering sleek, silky results.

# Hard Smoothing Brush

Designed for thick or coarse hair, it smooths frizz with firm tension—offering sleek, silky results that look photo-ready.



Figure 7: Achieving sleek results with the Hard Smoothing Brush.

## 5. Round Volumizing Brush

Use this brush to create volume at the roots and shape your hair for a natural lift.



## Voluminous Roots, Natural Lift

Boosts volume at the roots for an airy, lifted look—perfect for fine or flat hair.

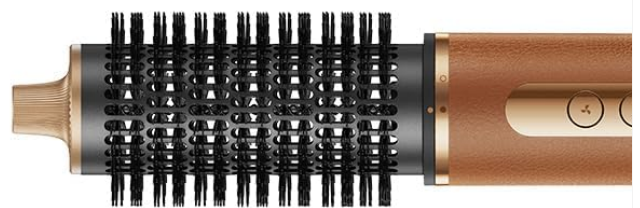


Figure 8: Adding volume with the Round Volumizing Brush.

### 6. Flyaway Attachment

This attachment is designed to smooth down flyaways and baby hairs for a polished, high-shine finish.



## Flawless Finish Made Easy

Smooths flyaways and baby hairs—no frizz, just polished styling.



Figure 9: Achieving a flawless finish with the Flyaway Attachment.

### Step-by-Step Styling Example: Smooth, Voluminous Curls

For straight or slightly wavy, medium-long hair, follow these steps:

# How to Style Smooth, Voluminous Curls

For straight or slightly wavy, medium-long hair



**Step 1** Dry to 80%, focusing on roots for natural lift.



**Step 2** Tame frizz with Soft or Hard Smoothing Brush.



**Step 3** Wrap and curl with Auto-Wrap Barrels.



**Step 4** Set your style with Cool Shot.

Figure 10: Styling guide for smooth, voluminous curls.

1. **Step 1: Dry to 80%.** Use the Fast Dryer attachment to dry your hair until it is about 80% dry, focusing on the roots for natural lift.
2. **Step 2: Tame Frizz.** Use either the Soft or Hard Smoothing Brush to tame any frizz and prepare your hair.
3. **Step 3: Wrap and Curl.** Switch to the Auto-Wrap Barrels. Take sections of hair and allow the barrel to automatically wrap and curl them.
4. **Step 4: Set Your Style.** Finish by using the Cool Shot function to set the curls for long-lasting results.

Regular maintenance ensures the longevity and optimal performance of your DREAME AirStyle Pro.

## **Cleaning the Air Intake Filter:**

The air intake filter is located at the bottom of the main unit. A clogged filter can reduce airflow and lead to overheating.

1. **Unplug the Device:** Always ensure the styler is unplugged from the power outlet before cleaning.
2. **Remove Filter:** Gently twist or pull the filter cover at the base of the handle to remove it.
3. **Clean:** Use the provided Air Intake Filter Cleaning Brush to remove any dust, lint, or hair accumulated on the filter mesh. You can also gently wipe with a dry cloth.
4. **Reattach Filter:** Once clean, reattach the filter cover by aligning and twisting until it clicks back into place.

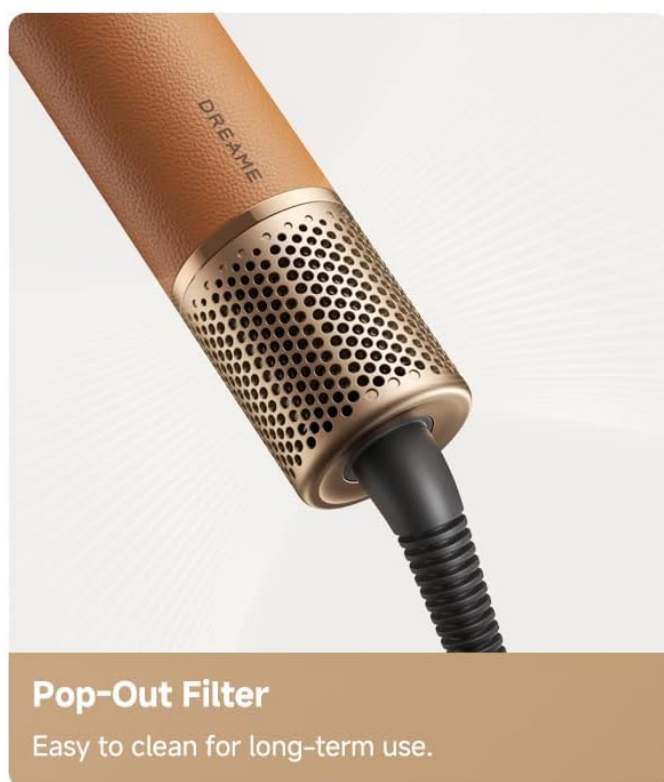
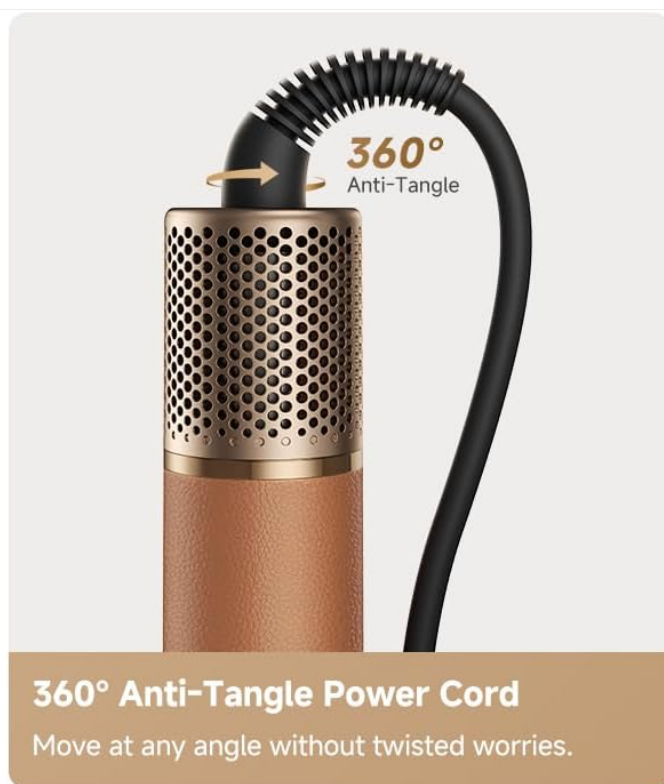
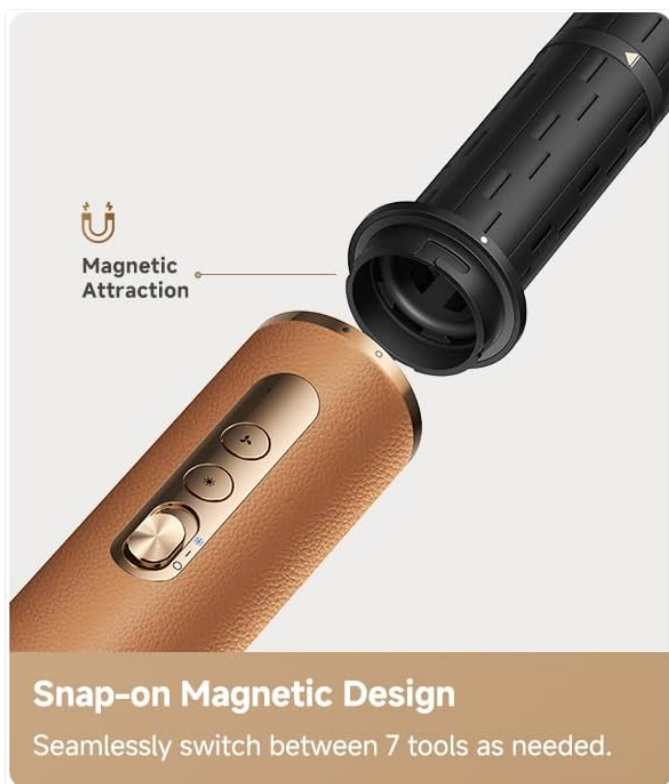


Figure 11: Location of the easy-to-clean filter.

**General Cleaning:** Wipe the main unit and attachments with a soft, damp cloth. Do not use abrasive cleaners or immerse the device in water.

## TROUBLESHOOTING

If you encounter issues with your DREAME AirStyle Pro, refer to the following common problems and solutions:

Problem	Possible Cause	Solution
Device does not turn on.	Not plugged in; power outlet issue; GFCI tripped.	Ensure the device is securely plugged into a working outlet. Check if the GFCI on the cord or outlet has tripped and reset if necessary.
Weak airflow or device overheating.	Clogged air intake filter; prolonged use on high heat.	Clean the air intake filter as described in the Maintenance section. Allow the device to cool down if it has been in continuous use for an extended period.
Attachments fall off during use.	Attachment not securely locked; excessive force during styling.	Ensure the attachment is twisted until it clicks firmly into place. Avoid applying excessive pressure or force when styling, especially when detangling.
Hair not curling effectively.	Hair too wet or too dry; incorrect technique.	Ensure hair is approximately 80% dry. Review the operating instructions for the Auto-Wrap Barrels and practice the technique.

If the problem persists after attempting these solutions, please contact DREAME customer support for further assistance.

## SPECIFICATIONS

---

- **Model Number:** AMF18A
- **Brand:** DREAME
- **Product Dimensions:** 1.95 x 5.66 x 7.84 inches; 1.32 Pounds
- **Color:** Gold
- **Material:** Plastic
- **Wattage:** 1300 watts
- **Power Source:** Corded Electric
- **Voltage:** 120 volts

## WARRANTY AND SUPPORT

---

The DREAME AirStyle Pro comes with a **2+1 year extended warranty**, ensuring reliable performance and peace of mind. This warranty covers manufacturing defects and ensures the product's impressive 600-hour lifespan.

For warranty claims, technical support, or any inquiries, please visit the official DREAME website or contact their customer service department. Refer to the contact information provided in your product packaging or on the official DREAME brand store online.

**Online Support:** Visit the DREAME Store on Amazon

