

## Midea MAW24S2VWT-A

# Midea 24,000 BTU Smart Inverter Window Air Conditioner User Manual

Model: MAW24S2VWT-A

## 1. PRODUCT OVERVIEW

The Midea 24,000 BTU Smart Inverter Window Air Conditioner is designed to provide powerful, energy-efficient, and quiet cooling for large rooms up to 1500 sq. ft. This unit features advanced inverter technology for consistent comfort and significant energy savings. It offers versatile control options including an LED display, remote control, and smart control via the Midea Air app, Alexa, and Google Assistant.



The Midea 24,000 BTU Smart Inverter Window Air Conditioner, shown with its remote control and a smartphone displaying the control app.

Key features include ultra-quiet operation (as low as 50 dBA), a 24-hour timer, ECO energy saver mode, and a washable filter for easy maintenance. Its smart capabilities allow for convenient climate management from anywhere.

## 2. KEY FEATURES AND BENEFITS

- **Powerful Cooling Performance:** Delivers robust cooling for large rooms up to 1,500 square feet.
- **Energy Efficiency:** Variable-speed inverter technology reduces power consumption by more than 35% compared to traditional units, earning it an Energy Star certification.
- **Ultra-Quiet Operation:** Operates at noise levels as low as 50 dBA, ensuring minimal disturbance.
- **Smart Control:** Control the unit wirelessly via the Midea SmartHome App, Alexa, or Google Assistant.
- **Multiple Modes:** Features Auto, Cool, Dry, and Fan modes with 3 speed settings (Auto/H/M/L).
- **Convenience Features:** Includes a 24-hour timer, ECO energy saver, and an LED display.

# VARIABLE SPEED INVERTER TECHNOLOGY

Ultra-quiet performance, as low as 53 dBA

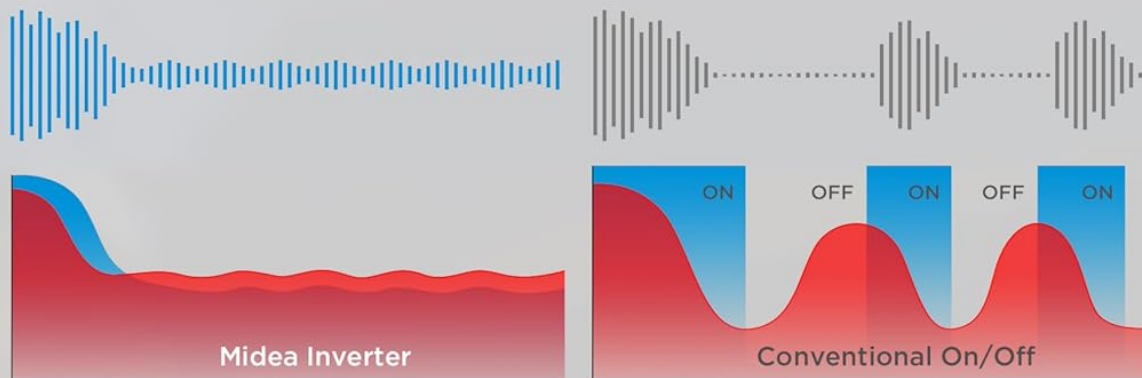
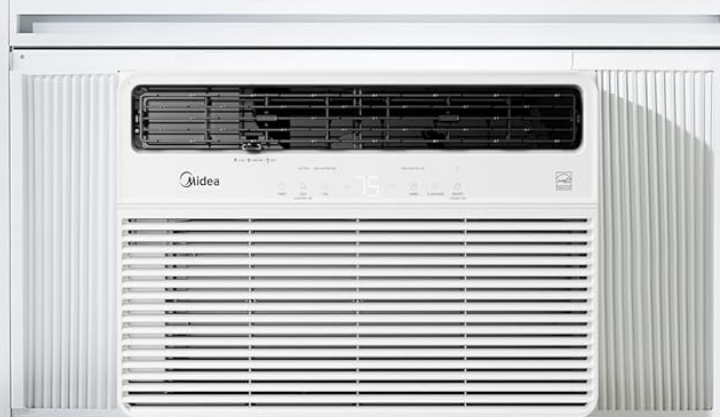


Illustration of Midea's variable speed inverter technology, showing smoother temperature regulation and quieter operation compared to traditional on/off compressors.

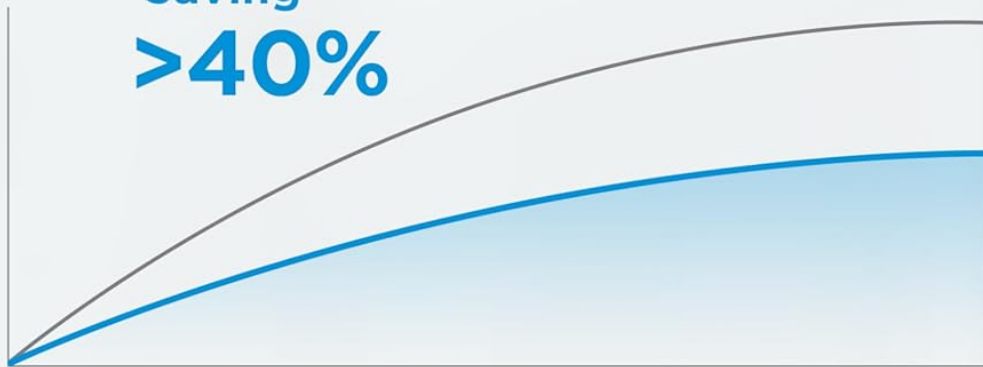
# SAVE BIG WITH MIDEA INVERTER TECHNOLOGY

Up to 40% in energy savings



Power  
consumption

Saving  
**>40%**



Non-Inverter AC

Inverter AC

Run time

\*compared to the energy conservation standard

Comparison graph demonstrating over 40% energy savings achieved with Midea Inverter Technology over traditional non-inverter air conditioners.

## 3. INSTALLATION GUIDE

This Midea window air conditioner is designed for quick and easy installation in double-hung windows. Please ensure your electrical outlet is compatible with a 230V power supply before beginning installation.



# QUICK AND EASY INSTALLATION

Designed to fit double hung windows



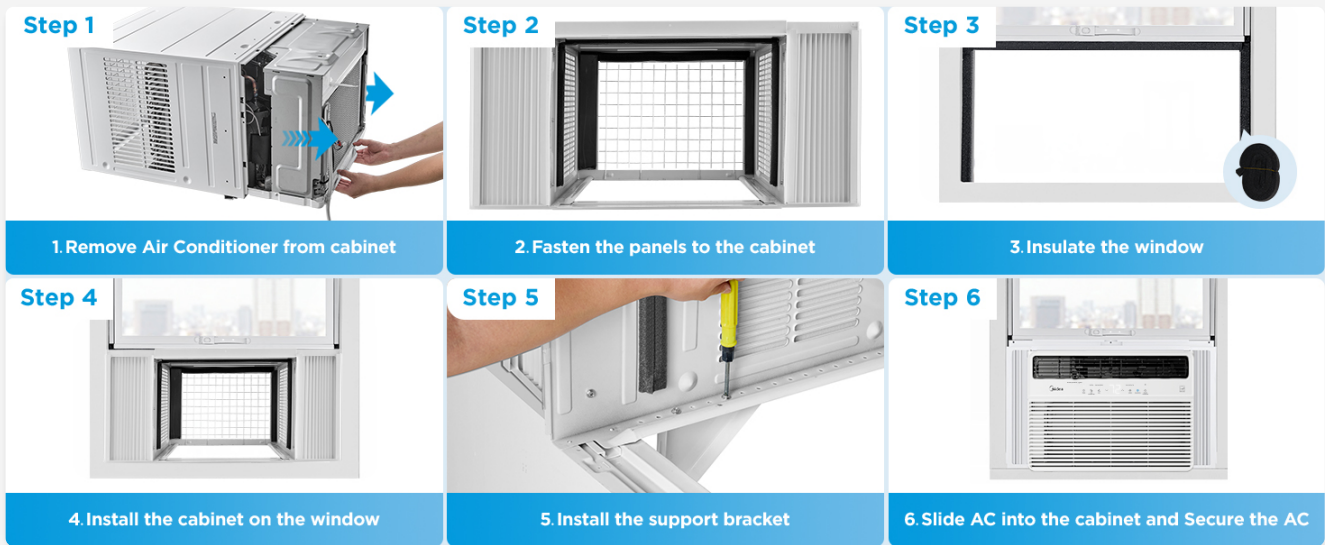
A person installing the Midea window air conditioner, highlighting its dimensions for proper window fit.

## Installation Steps:

1. **Remove Air Conditioner from Cabinet:** Carefully slide the air conditioner unit out of its outer cabinet.
2. **Fasten Panels to Cabinet:** Attach the side panels securely to the air conditioner cabinet.
3. **Insulate the Window:** Apply any necessary insulation strips around the window opening to ensure a tight seal.
4. **Install Cabinet on Window:** Place the empty cabinet into the window opening, ensuring it is level and

securely positioned.

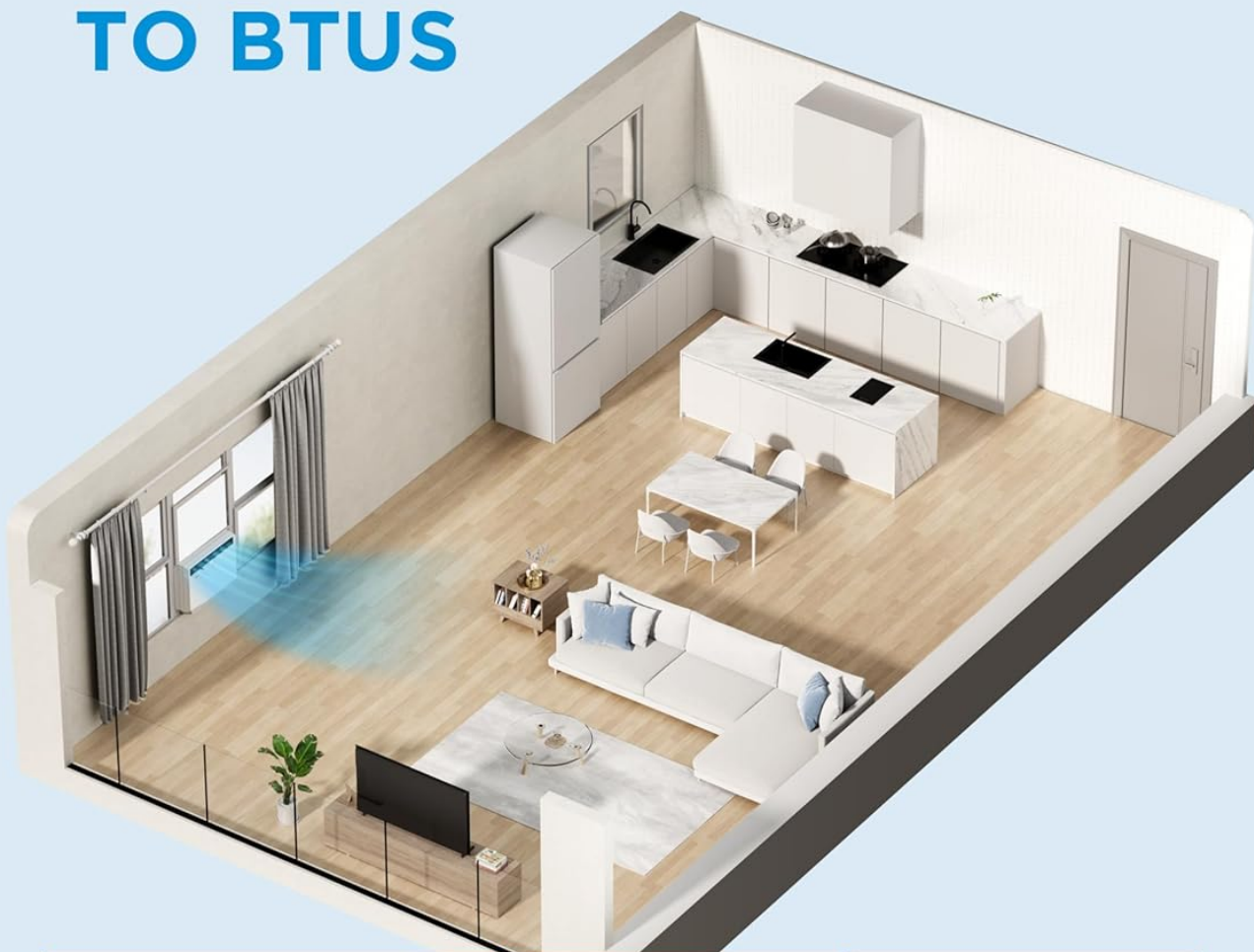
5. **Install Support Bracket:** Attach the support bracket to the exterior of the window frame to provide additional stability for the unit.
6. **Slide AC into Cabinet and Secure:** Carefully slide the air conditioner unit back into the installed cabinet. Secure the unit within the cabinet using the provided screws and fasteners.



A visual guide detailing the six steps for installing the Midea window air conditioner.

For optimal cooling, ensure the BTU capacity matches your room size. This 24,000 BTU unit is ideal for spaces between 1400-1500 sq. ft.

# MATCH ROOM SIZE TO BTUS



MAW08S1VWT-A	8K BTU	300-350 SQ.FT.
MAW10S1VWT-A	10K BTU	400-450 SQ.FT.
MAW12S1VWT-A	12K BTU	450-550 SQ.FT.
MAW14S1VWT-A	14K BTU	550-700 SQ.FT.
MAW18S1VWT-A	18K BTU	700-1000 SQ.FT.
MAW24S1VWT-A	24K BTU	1400-1500 SQ.FT.

A guide to matching room size to the appropriate BTU capacity for efficient cooling.

## 4. OPERATING INSTRUCTIONS

Your Midea air conditioner offers multiple ways to control its functions for maximum convenience.

### Control Panel:

The unit features an intuitive LED display and control buttons on the front panel. You can adjust modes (Auto, Cool,



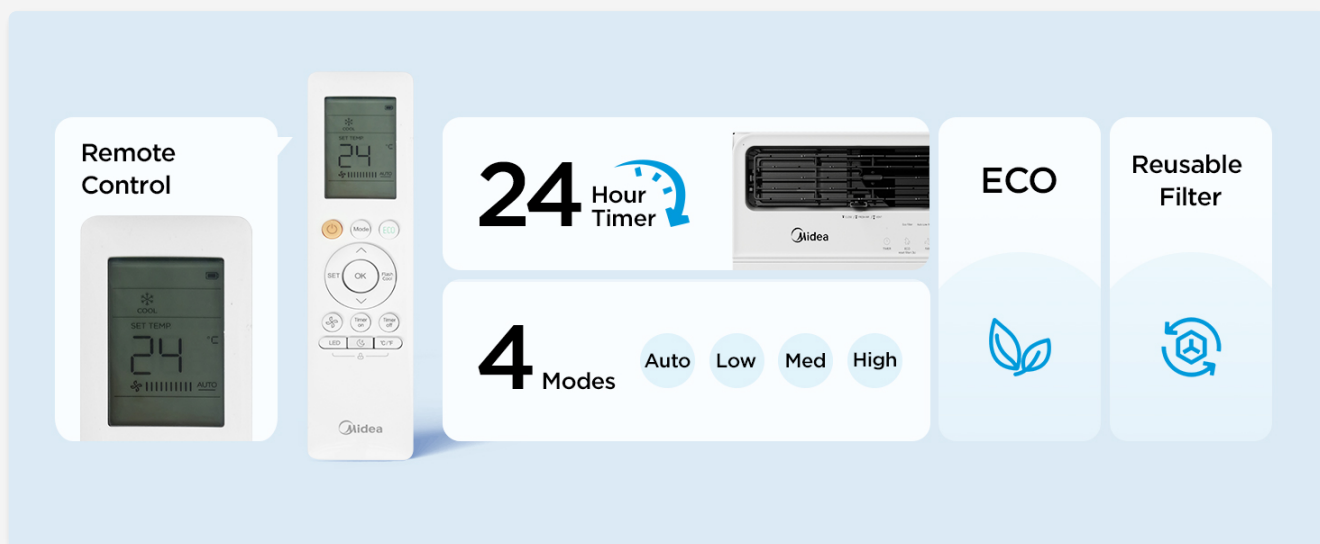
Dry, Fan), fan speeds (Auto, Low, Medium, High), set the timer, and activate ECO mode directly from here.



The user-friendly control panel of the Midea air conditioner, featuring various settings and an LED display.

### Remote Control:

The included remote control provides full functionality from a distance. It allows you to power the unit on/off, change modes, adjust temperature, set fan speed, activate the timer, and engage ECO mode.



The remote control for the Midea air conditioner, highlighting features such as the 24-hour timer, multiple operating modes, ECO function, and reusable filter.

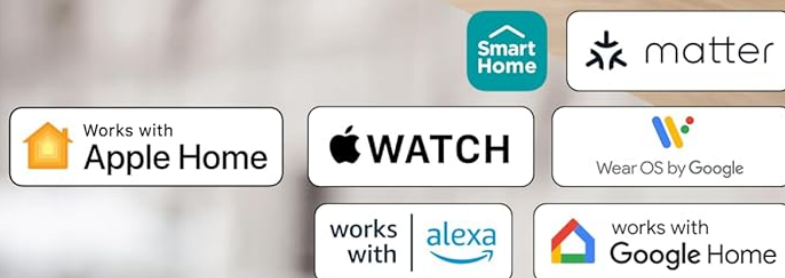
### Smart Control (App & Voice Assistant):

Download the Midea Air app (available for iOS/Android) to control your AC unit from anywhere using your smartphone. You can also integrate the unit with voice assistant devices like Amazon Alexa and Google Assistant for hands-free operation.



# CONTROL FROM ANYWHERE

Via SmartHome App, Smart Watch and Voice Assistant Devices



A smartphone screen showing the Midea SmartHome app interface, demonstrating remote control capabilities for the air conditioner.

## CONTROL VIA VOICE ASSISTANT DEVICES

Pair with voice assistant devices and use commands for hands-free control over unit.



A user interacting with a voice assistant device to control the Midea air conditioner, illustrating hands-free operation.

## 5. MAINTENANCE

Regular maintenance ensures optimal performance and longevity of your air conditioner.

- **Filter Cleaning:** The washable filter is easily accessed from the front panel. Clean it regularly (e.g., every two weeks or as needed) to maintain peak performance and air quality. Refer to the detailed instructions in the full manual for removal and cleaning procedures.
- **Exterior Cleaning:** Wipe the exterior of the unit with a soft, damp cloth. Do not use harsh chemicals or abrasive cleaners.
- **Coil Cleaning:** Periodically inspect the outdoor coils for dirt and debris. If heavily soiled, professional cleaning may be required.

## 6. TROUBLESHOOTING

If you encounter issues with your Midea air conditioner, refer to the following common troubleshooting tips:

- **Unit Does Not Turn On:**
  - Ensure the unit is properly plugged into a 230V outlet.
  - Check the circuit breaker to ensure it hasn't tripped.
  - Verify the remote control batteries are not depleted.
- **Insufficient Cooling:**
  - Check if the air filter is dirty and requires cleaning.
  - Ensure windows and doors are closed to prevent warm air from entering the room.
  - Verify the temperature setting is lower than the room temperature.
  - Check for obstructions around the air intake or exhaust vents.
- **Unusual Noise:**
  - Ensure the unit is installed level and securely in the window.
  - Check for any loose parts or foreign objects inside the unit.
- **Water Leakage:**

- Ensure the unit is slightly tilted outwards to allow for proper drainage.
- Check the drain pan and drain hose for blockages.

For persistent issues, please contact Midea customer support or consult a qualified technician.

## 7. SPECIFICATIONS

Specification	Detail
Brand	Midea
Model Number	MAW24S2VWT-A
Cooling Capacity	24,000 BTU
Coverage Area	Up to 1500 sq. ft.
Voltage	230 Volts
Wattage	3200 watts
Noise Level	48.5 dB
Dimensions (D x W x H)	23.62 x 25.39 x 17.91 inches
Item Weight	98.3 pounds
Installation Method	Window
Special Features	Remote Controlled, Wireless control, Eco Mode, Fast Cooling, Dehumidifier
Material	Plastic
Color	White
Country of Origin	China

## 8. WARRANTY AND SUPPORT

This Midea air conditioner comes with a **One Limited Year Warranty** from the original purchase date. Please retain your proof of purchase for warranty claims.

For technical support, warranty service, or further assistance, please visit the official Midea website or contact their customer service department. You can often find detailed FAQs, troubleshooting guides, and contact information on the manufacturer's support pages.



