



[Manuals.plus](#) /

› [OTTOCAST](#) /

› OTTOCAST Mini Wireless CarPlay & Android Auto Adapter User Manual

OTTOCAST CA505-T1

OTTOCAST Mini Wireless CarPlay & Android Auto Adapter User Manual

Model: CA505-T1

1. PRODUCT OVERVIEW

The OTTOCAST Mini is a compact 2-in-1 wireless adapter designed to convert your vehicle's wired Apple CarPlay or Android Auto system into a wireless experience. It offers seamless connectivity for iPhone (iOS 10+) and Android (Android 11+) devices, providing high-quality audio and responsive control through your car's existing infotainment system.



Image: The OTTOCAST Mini adapter shown alongside its product packaging, highlighting its compact size and design.

Key features include 5GHz WiFi and Bluetooth 5.0 for fast and stable connections, a plug-and-play setup, and automatic re-connection. The device is designed for durability and ease of use, integrating with your car's native controls such as touchscreen, knob, and steering wheel controls.

2. WHAT'S IN THE BOX

Upon opening the OTTOCAST Mini package, you will find the following components:

- 1 x OTTOCAST Mini Wireless Adapter
- 1 x USB-A to Type-C Adapter
- 1 x USB-A to Type-A 90° Adapter
- 1 x User Manual (this document)
- 1 x Product Box



Image: A visual representation of all items included in the OTTOCAST Mini product packaging.

Your browser does not support the video tag.

Video: An unboxing video demonstrating the contents of the OTTOCAST Mini package, including the main adapter and various USB accessories.

3. COMPATIBILITY

The OTTOCAST Mini adapter is compatible with vehicles that have a factory-installed wired Apple CarPlay or wired Android Auto system. It supports iPhones running iOS 10+ and Android phones running Android 11+.

- **Vehicle Compatibility:** Designed for 98% of cars equipped with wired CarPlay/Android Auto (2016+ models). Not compatible with BMW or Tesla vehicles.
- **Phone Compatibility:** iPhone (iOS 10 and above), Android Phone (Android 11 and above).
- **Connectivity:** Utilizes 5GHz WiFi and Bluetooth 5.0.

GO WIRELESS GO FURTHER

Android 11
and above



10 iPhone 6
and above



✓ Not for Video

For motorcycle use? Ask us to confirm compatibility. SCAN ME TEST COMPATIBILITY

OEM Wired Apple CarPlay Wireless Apple CarPlay iPhone 6 and above **iOS 10.0+**

OEM Wired Android Auto Wireless Android Auto Android Phone **Android 11.0+**

Image: Diagram illustrating the compatibility of the OTTOCAST Mini with various car systems and phone operating systems (iOS 10+ and Android 11+).



GPS Passthrough Tech

Manually switch to the car's built-in navigation

Reduce phone battery drain.

Lower-latency navigation in weak signal areas.

Manual toggle needed.

ON AA 192.168.1.101 Settings GPS Mode 1

OFF AA 192.168.1.101 Settings GPS Default

Image: A QR code and URL are provided to verify if your specific car model supports CarPlay or Android Auto, which is a prerequisite for using the adapter. You can check compatibility at check.adaptermanual.com.

4. SETUP GUIDE

Follow these steps to set up your OTTOCAST Mini Wireless CarPlay & Android Auto Adapter:

Step 1: Check Compatibility

Ensure your car is equipped with a factory-installed wired Apple CarPlay or Android Auto. Also, confirm your phone runs iOS 10+ or Android 11+ and that your cellular data plan is active (not Wi-Fi).



Image: Visual guide for checking phone OS and car system compatibility before proceeding with setup.

Step 2: Turn on Bluetooth and Wi-Fi on Your Phone

Start your vehicle. On your phone, ensure Bluetooth and Wi-Fi are turned on. Verify that Siri or Google Assistant is enabled. If you have previously paired any other wireless adapters, remove them from your phone's Bluetooth settings to avoid conflicts.

Can I Watch Videos via Carplay/Android Auto?

Apple CarPlay/Android Auto does not include any support for video playback.

However, the sound from the video streaming on your phone can be played through the car stereo. Due to wireless CarPlay limitations, the sound may not sync with your phone.



Image: Instructions for enabling Bluetooth and Wi-Fi on both iOS and Android devices, and how to forget previously paired devices.

Step 3: Plug in the Dongle

Locate the USB Type-A or USB Type-C port in your car (usually under the dashboard or in the center console). Plug the OTTOCAST Mini adapter into the port. The indicator light on the adapter will glow red when powered on. Use the included 90° adapter if space is limited.

How to Use GPS Passthrough?

- 1 Ensuring the Ottocast Mini adapter is connected.
- 2 Enter "192.168.1.101" in your Phone's browser.
- 3 Selecting "Mode 1" in the GPS settings menu.
- 4 The adapter will restart automatically after setup – this is normal.
- 5 Enable GPS Passthrough permanently with one setup
(Note: The performance depends on your car's navigation system).
To return to phone GPS, repeat the steps and switch to "Default".

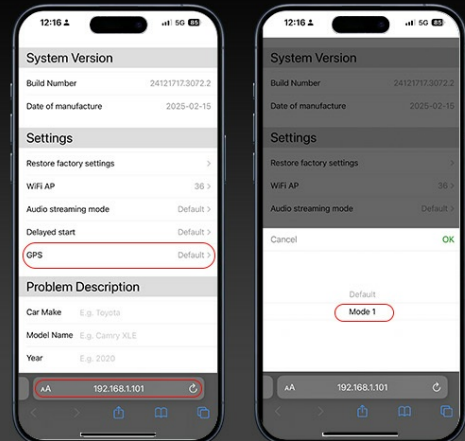


Image: Visual guide showing how to plug the OTTOCAST Mini into the car's USB port, with options for USB-A, USB-C, and a 90° adapter for tight spaces.

Step 4: Pair with the Bluetooth Device "CAR2-XXXX"

On your phone, go to Bluetooth settings and select the device named "CAR2-XXXX" (where XXXX is a unique identifier). The blue light on the adapter will flash rapidly to indicate pairing mode. During this process, your phone's Wi-Fi or hotspot connection may temporarily disconnect as the adapter uses the Wi-Fi channel for data transmission.



Step 5 Post-Pairing Configuration and Permission

Complete Bluetooth pairing.

Select "Allow" on all system prompts.

 Wait for the blue indicator light to stay on steadily.

Enable permissions for CarPlay/Android Auto in device settings.

Image: Illustration of the Bluetooth pairing step, showing the device name to connect to and the adapter's blue flashing light.

Step 5: Post-Pairing Configuration and Permission

Complete the Bluetooth pairing. Select "Allow" on all system prompts that appear on your phone or car display. Wait for the blue indicator light on the adapter to stay on steadily, indicating a successful connection. Finally, enable necessary permissions for CarPlay/Android Auto in your device settings if prompted.



Step 3 Plug in the Dongle

The indicator light glows red when powered on.

Locate the USB Type-A or USB Type-C port under the dashboard or within the center console.



USB-Type-A

or



USB-Type-C

Designed for use in narrow or confined vehicle spaces



90° Type-A

Image: Final steps of the setup process, including accepting prompts and confirming the steady blue indicator light.

Your browser does not support the video tag.

Video: A detailed guide on how to determine if your car supports CarPlay/Android Auto and the connection process for the OTTOCAST Mini.

5. OPERATING INSTRUCTIONS

Once successfully paired, the OTTOCAST Mini will automatically connect to your phone when you start your car, typically within 3 seconds. This allows for immediate access to your CarPlay or Android Auto interface on your vehicle's display.

Automatic Re-connection

The adapter is designed for seamless automatic re-connection. Once paired, it will automatically connect to the last used device when the car is started, eliminating the need for manual pairing each time.

Smaller

Tiny Size, Perfect Fit
35% Smaller

49.6mm
1.95inch

22mm
0.87inch

USB STICK SIZE,
portable and compatible with most vehicles.

Image: Visual representation of the adapter's quick 5-second automatic re-connection feature upon starting the car.

Using Car Controls

The OTTOCAST Mini integrates perfectly with your car's original controls, allowing you to navigate and interact with CarPlay or Android Auto using:

- Touchscreen control
- OEM control knob
- Steering wheel controls
- Voice commands (Siri, Google Assistant)

No Wireless?

Adapter with Cable?

A Tangled Mess

The Real Wireless

No More Cable

Hassle-Free

Drive Smarter, Not Harder

No more tangled cables
No more disconnected cords
No more scrambling to match devices

More streamlined spaces
More stable connections
More effortless convenience

Image: Demonstrates how the adapter allows seamless control of CarPlay/Android Auto using the car's native touchscreen, control knob, and steering wheel buttons, as well as voice commands.

Your browser does not support the video tag.

Video: Illustrates how the OTTOCAST Mini connects your car to your digital world, showcasing various app functionalities and seamless integration.

6. ADVANCED FEATURES

Multi-user Disconnect & Factory Reset

The OTTOCAST Mini stores pairing history for recently connected smartphones. It automatically prioritizes the last connected device. To switch between paired devices, press the smart button on the adapter to disconnect the current device, allowing the other paired device to connect. If multiple family members use the same car and encounter connection issues, you can perform a factory reset by holding the Smart Button for 15 seconds. This clears the adapter's memory and resolves most connection problems with new devices.

GPS Passthrough

The GPS Passthrough feature allows you to manually switch to your car's built-in navigation system. This can reduce phone battery drain and provide lower-latency navigation in areas with weak signal, such as tunnels or underground parking. A manual toggle is required to activate this feature.

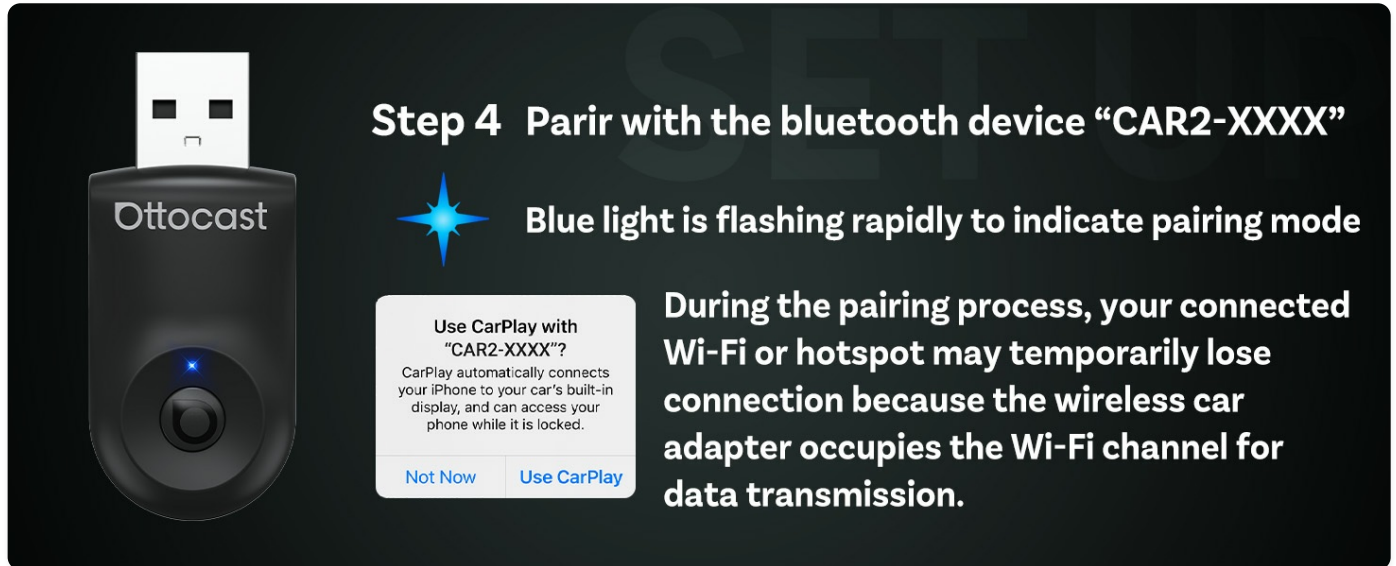


Image: Step-by-step instructions on how to enable GPS Passthrough by accessing the adapter's settings via a web browser (192.168.1.101) and selecting "Mode 1".

Video Playback Limitations

Please note that Apple CarPlay and Android Auto do not natively support video playback from streaming services like YouTube, Netflix, Apple TV+, Prime Video, or Hulu. While audio from video streaming on your phone can be played through the car stereo, due to wireless CarPlay limitations, the sound may not always perfectly sync with your phone's video.

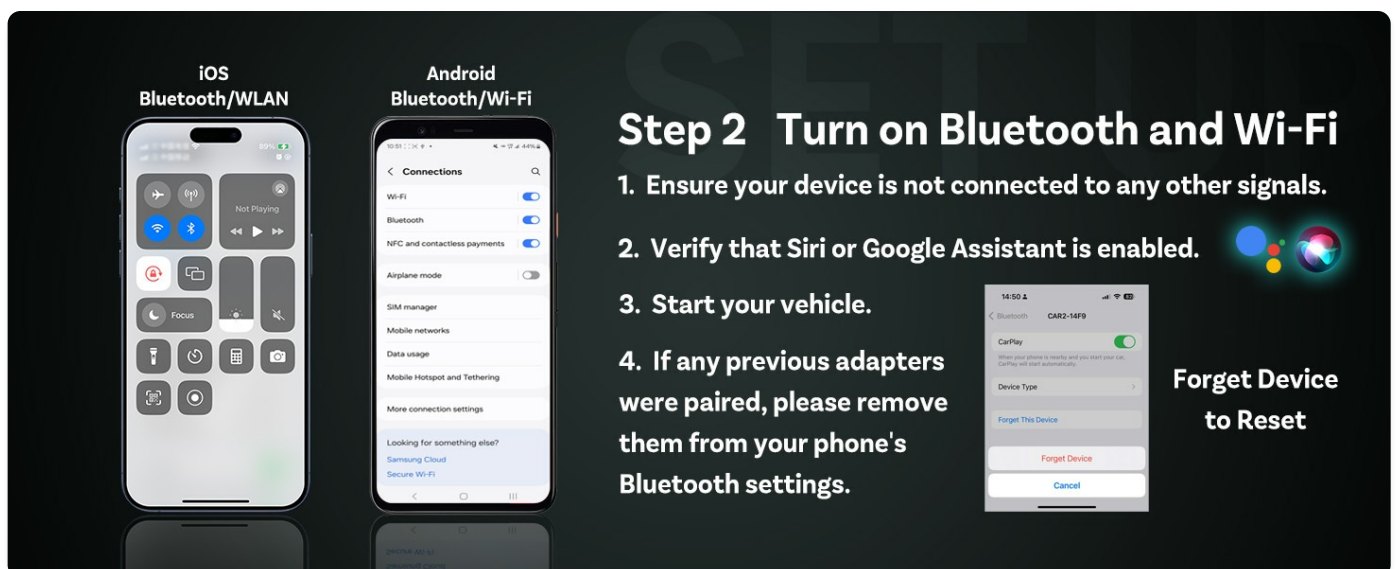


Image: Clarification that video apps are not supported for direct playback through CarPlay or Android Auto due to system limitations.

7. MAINTENANCE

The OTTOCAST Mini is designed for durability and requires minimal maintenance. Keep the device clean and free from dust or debris. Avoid exposing it to extreme temperatures or moisture.

Firmware Updates (OTA)

The adapter supports Over-The-Air (OTA) firmware updates to ensure optimal performance and compatibility. Most issues can be resolved through these updates. You can also submit issue reports online through the update interface.

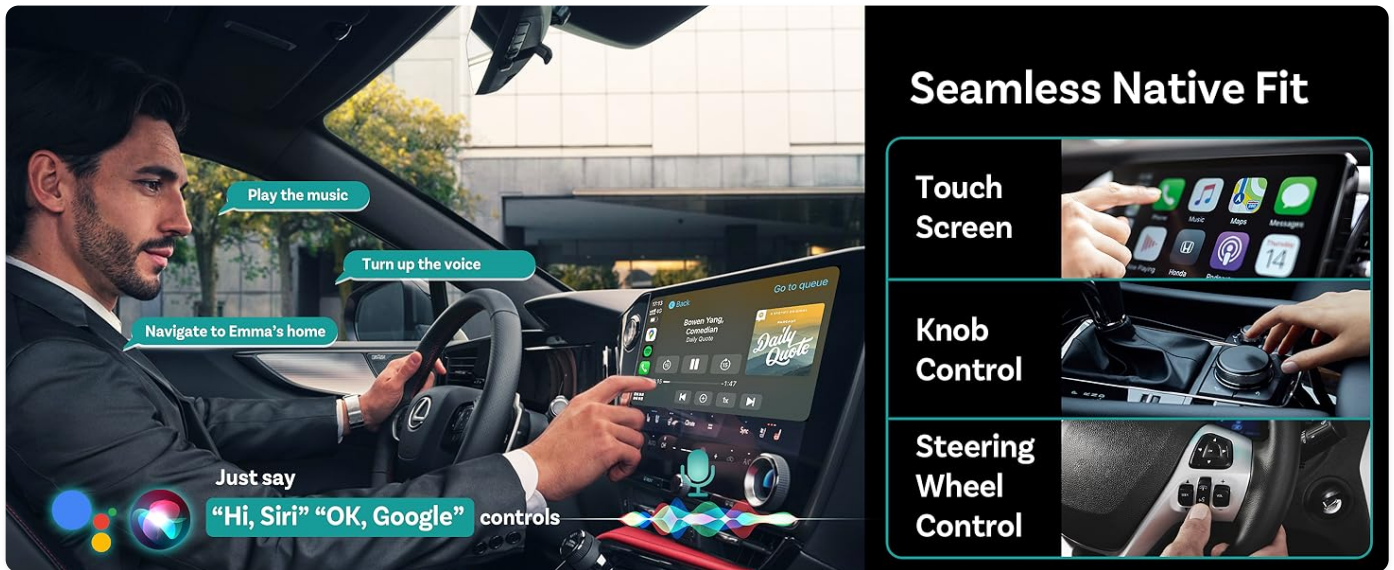


Image: Depicts the online upgrade process (OTA) for the adapter, emphasizing that updates can resolve most issues and allow for online issue reporting.

8. TROUBLESHOOTING

If you encounter issues with your OTTOCAST Mini, consider the following troubleshooting steps:

Problem	Possible Cause	Solution
Adapter not connecting automatically.	Previous pairing issues, multiple devices.	Hold the Smart Button for 15 seconds to factory reset the adapter. Re-pair your device.
Intermittent connection or audio skipping.	Temporary signal interference, minor glitch.	Unplug the adapter and plug it back in. Ensure no other Wi-Fi devices are interfering.
CarPlay/Android Auto not launching.	Incorrect phone settings, car not recognizing adapter.	Ensure Bluetooth and Wi-Fi are on. Check phone permissions for CarPlay/Android Auto. Verify your car has wired CarPlay/Android Auto.
Cannot switch between multiple phones easily.	Adapter prioritizes last connected device.	Press the smart button on the adapter to disconnect the current phone, then connect the desired phone.

For further assistance, refer to the support section or contact OTTOCAST customer service.

9. SPECIFICATIONS

Feature	Detail
Model Number	CA505-T1

Feature	Detail
Product Dimensions	1.97"L x 0.87"W x 0.41"H (50mm x 22mm x 10.4mm)
Item Weight	0.282 ounces (8 grams)
Connectivity Technology	Wi-Fi 5GHz, USB Type-C/USB Type-A, Bluetooth 5.0
Material	Acrylonitrile Butadiene Styrene (ABS)
Operating Temperature	-20°C to 70°C (-4°F to 158°F)
Plug Life Test	50,000+ Cycles
Manufacturer	OTTOCAST
Country of Origin	China



Image: An X-ray view of the OTTOCAST Mini, highlighting its internal components such as the A7S Intelligent Chip, Bluetooth 5.2, and Wi-Fi 5.0 for enhanced performance.

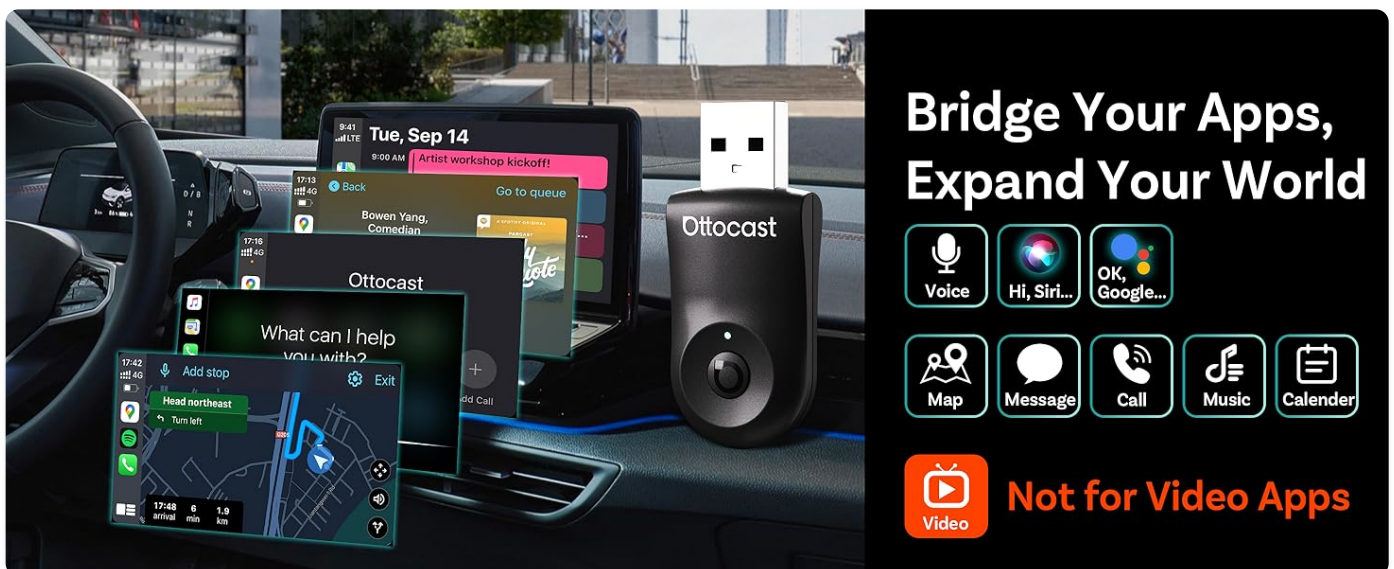


Image: Illustrates the robust design of the OTTOCAST Mini, built to withstand extreme temperatures and tested for over 50,000 plug cycles.

10. WARRANTY AND SUPPORT

OTTOCAST provides comprehensive support for its products. The wireless CarPlay adapter is rigorously tested for solid performance and is built to last.

- **Customer Support:** Our technical support team is available 24/7, 365 days a year to assist with any issues.
- **Contact:** For support inquiries, please email support@ottocast.com.