

vretti PB821

vretti PB821 Portable Thermal Printer User Manual

Model: PB821

1. INTRODUCTION

Thank you for choosing the vretti PB821 Portable Thermal Printer. This compact and versatile printer is designed for convenient, inkless printing from various devices, including smartphones, tablets, and laptops. Its portable design makes it ideal for business, office, home, and travel use. This manual provides detailed instructions to help you set up, operate, and maintain your printer for optimal performance.

Widely Used in Different Fields



Office



Home



Travel



School



The vretti PB821 printer is suitable for a wide range of environments, including office, home, travel, and school, demonstrating its versatility.

2. PRODUCT OVERVIEW

2.1 Package Contents

Please check the package contents upon unboxing:

- vretti PB821 Portable Thermal Printer
- USB-C Charging Cable
- User Manual
- Sample Thermal Paper

2.2 Key Features

- **Wireless Bluetooth Printing:** Connects seamlessly with phones and tablets via the "XLifePro" app (available on App Store and Google Play). Supports various file formats including TXT, PDF, Excel, and Word.
- **Portable and Compact:** Lightweight design for easy transport, fitting into backpacks for business trips, family travel, or study.
- **Cost-effective Inkless Printing:** Utilizes advanced thermal printing technology, eliminating the need for ink, toner, or ribbons. Only thermal paper is required.
- **High-Quality Printing:** Delivers clear prints with a resolution of 203DPI.
- **Long Battery Life:** Built-in 1500mAh rechargeable battery supports printing up to 223 A4 sheets on a full charge.
- **Versatile Paper Support:** Compatible with various thermal paper sizes, including A5, A4, US Letter, and 2-4 inch labels.



The vretti PB821 printer supports multiple paper sizes, including standard US Letter and A4, for diverse printing needs.

Large Capacity Battery

Can print 223 sheets when fully charged



1500mAh
Battery Capacity

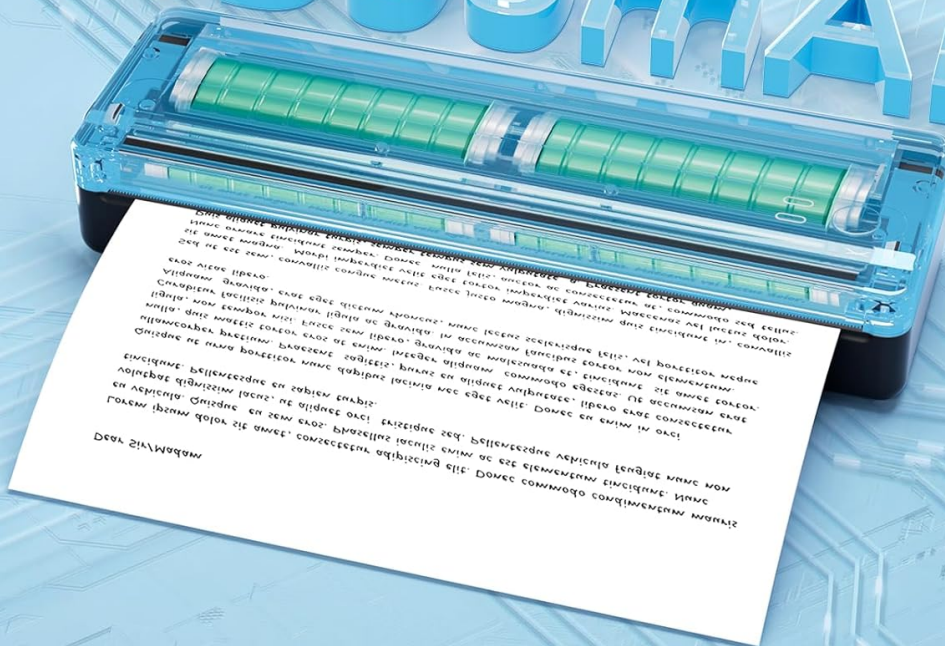


USB-C
Charging



223 sheets
Full Charge Print

1500mAh



The printer features a 1500mAh battery, offering extended printing capability and convenient USB-C charging.

High Print Speed And Clarity



Experience high print clarity with the vretti PB821, ensuring sharp and readable documents.

3. SETUP

3.1 Initial Charging

Before first use, fully charge the printer. Connect the supplied USB-C cable to the printer's charging port and a compatible USB power adapter (not included). The charging indicator light will show the charging status.

3.2 App Download (for Bluetooth Printing)

For wireless printing via Bluetooth, download the "XLifePro" app:

1. Search for "XLifePro" on the Apple App Store (for iOS devices) or Google Play Store (for Android devices).
2. Download and install the app on your smartphone or tablet.

3.3 Driver Installation (for USB Printing)

For printing via USB from a laptop or desktop computer, you may need to install drivers:

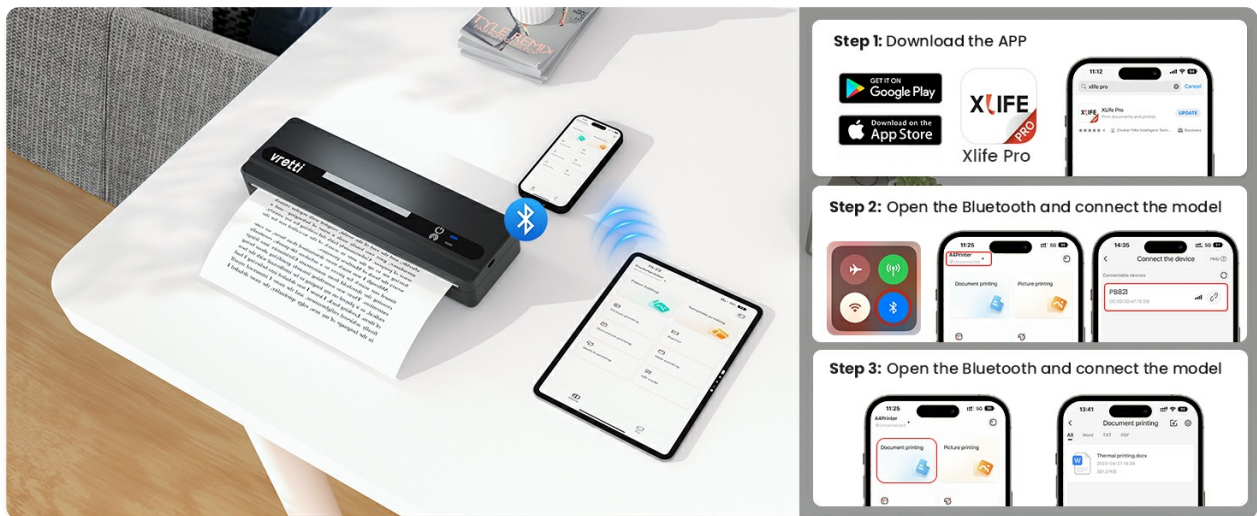
1. Visit the official vretti support website: vrettitech.com/pages/p83-support.
2. Download the appropriate driver for your operating system (Windows, Mac OS, Linux, Chromebook).
3. Follow the on-screen instructions to complete the driver installation.

4. OPERATING INSTRUCTIONS

4.1 Connecting via Bluetooth

To print wirelessly from your mobile device:

1. Ensure the printer is powered on and fully charged.
2. Open the "XLifePro" app on your smartphone or tablet.
3. Navigate to the device connection section within the app.
4. Enable Bluetooth on your mobile device and search for available devices.
5. Select "PB821" from the list of found devices to establish a connection.



Follow these steps to connect your vretti PB821 printer via Bluetooth using the XLifePro app.

4.2 Connecting via USB

To print from your computer:

1. Ensure the printer drivers are installed on your computer (refer to Section 3.3).
2. Connect the vretti PB821 printer to your laptop or desktop computer using the supplied USB-C cable.
3. The computer should recognize the printer automatically.
4. You can now print documents or webpages directly from your computer's applications.

Support Multiple Thermal Paper Types

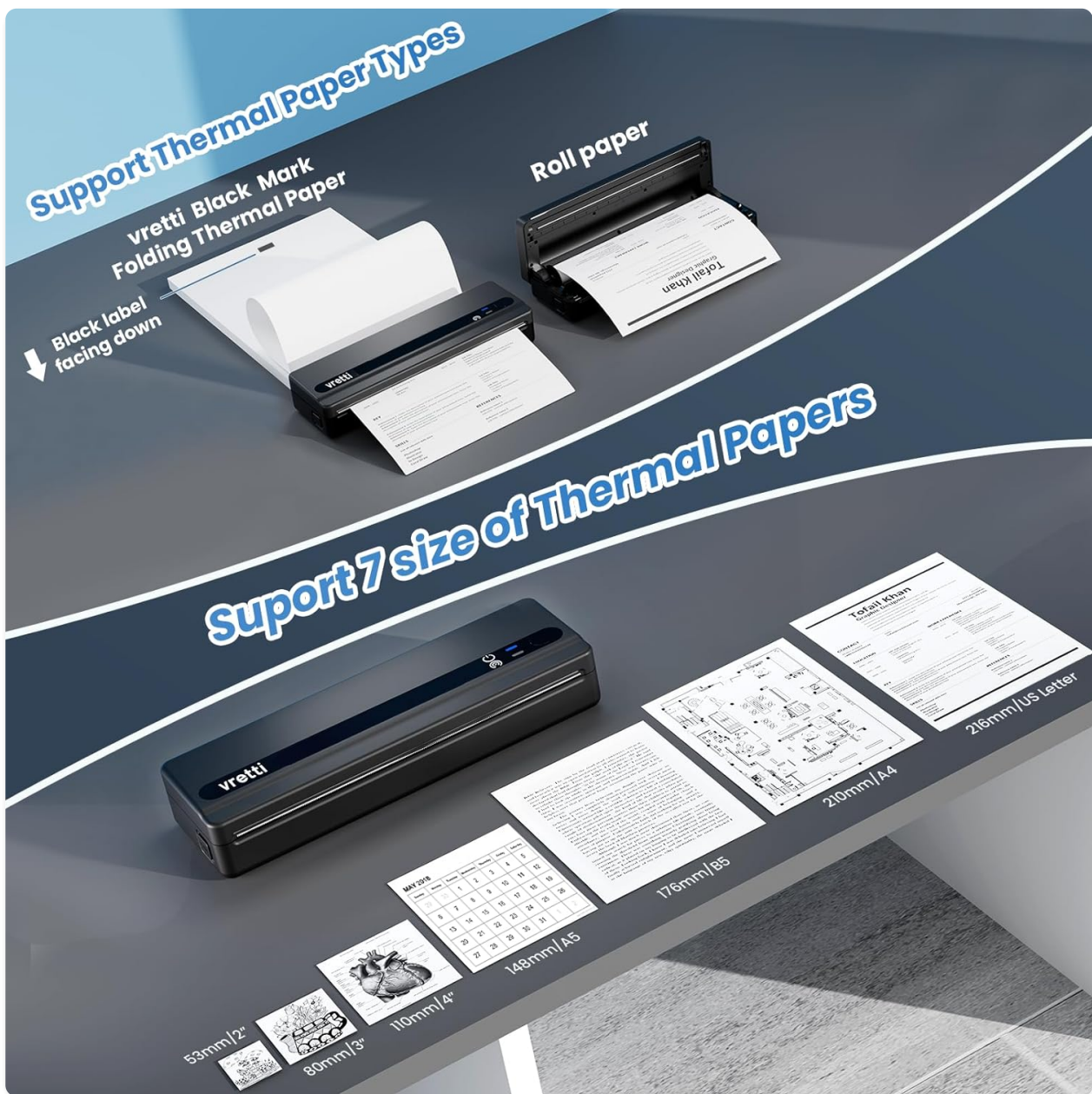


Connect your vretti PB821 printer to your computer via USB for direct printing after driver installation.

4.3 Loading Thermal Paper

The vretti PB821 supports various types and sizes of thermal paper. Ensure you use thermal paper as the printer does not require ink.

1. Open the paper compartment cover on the printer.
2. Insert the thermal paper, ensuring the printable side (usually the smoother, slightly glossy side) is facing the print head. For folding thermal paper with a black mark, ensure the black mark is facing down.
3. Adjust the paper guides to fit the width of your paper snugly.
4. Close the paper compartment cover securely.



Properly load thermal paper, including folding and roll types, ensuring correct orientation for optimal printing.



The vretti PB821 supports a wide range of paper sizes, from small labels to standard A4 and US Letter documents.

4.4 Printing Documents

Once connected and paper is loaded:

- **From App:** Select the document or image you wish to print within the "XLifePro" app. Adjust print settings (e.g., density, rotation) as needed, then tap the print button.
- **From Computer:** Open the document or file in your preferred application (e.g., Word, PDF viewer, web browser). Select "Print" from the file menu, choose the vretti PB821 as your printer, adjust settings, and click "Print".

5. MAINTENANCE

The vretti PB821 thermal printer requires minimal maintenance due to its inkless design. However, regular cleaning can ensure consistent print quality and extend the printer's lifespan.

- **Cleaning the Print Head:** If print quality degrades (e.g., faint lines, streaks), gently wipe the print head with a lint-free cloth dampened with isopropyl alcohol. Ensure the printer is off and cool before cleaning.
- **Cleaning the Exterior:** Use a soft, dry cloth to wipe down the exterior of the printer. Avoid abrasive cleaners or solvents.
- **Storage:** Store the printer in a cool, dry place away from direct sunlight and extreme temperatures.

6. TROUBLESHOOTING

If you encounter issues with your vretti PB821 printer, please refer to the following common problems and solutions:

Problem	Possible Cause	Solution
Printer not turning on	Low battery; Power button not pressed correctly	Charge the printer fully; Press and hold the power button for a few seconds.
Cannot connect via Bluetooth	Bluetooth off; Printer not discoverable; App issue	Ensure Bluetooth is enabled on both devices; Restart printer and app; Re-pair the device in app settings.
Poor print quality (faint, streaks)	Low battery; Dirty print head; Incorrect paper loading	Charge the printer; Clean the print head (see Section 5); Ensure thermal paper is loaded correctly.
Paper not feeding	Paper jammed; Paper not inserted correctly; Empty paper compartment	Clear any jammed paper; Re-insert paper, ensuring it's straight and aligned; Load new thermal paper.
Printer not recognized by computer	Drivers not installed; Loose USB connection	Install drivers (Section 3.3); Check USB cable connection; Try a different USB port.

If the problem persists after trying these solutions, please contact vretti customer support for further




assistance.

7. SPECIFICATIONS

Feature	Detail
Model	PB821
Printing Technology	Thermal
Connectivity	Bluetooth, USB
Print Resolution	203 DPI
Max Print Speed (Monochrome)	30 mm/s
Battery Capacity	1500mAh
Paper Compatibility	Thermal paper (plain, folding, roll, sticker)
Supported Paper Sizes	2", 3", 4", A4, 8.5"x 11" US Letter, A5, B5
Product Dimensions	25.7 x 7 x 4.7 cm
Item Weight	920 g
Color	Black
Included Components	Printer, USB-C Cable, Sample Paper

8. WARRANTY AND SUPPORT

vretti products are designed for reliability and performance. For warranty information and customer support, please refer to the documentation included with your purchase or visit the official vretti website. You can typically find support resources, FAQs, and contact information on the manufacturer's website. For the latest information and support, please visit:vrettitech.com

<div><div><div>vretti Contents</div><div>DT108B Installation Guide</div><div>Printer Model:4B-2054F</div></div><div><div>Getting Driver</div><div>Windows Driver Installation</div><div>Mac Driver Installation</div><div>Tech Support</div></div></div>	<div><div>vretti DT108B Installation Guide: Setup for Windows and Mac</div><div>Comprehensive installation guide for the vretti DT108B label printer. Learn how to install drivers for Windows and macOS, connect your printer, and perform a test print. Includes troubleshooting tips and support contact information.</div></div>
<div><div><div>vretti</div><div>410B USB (Driver model:4B-2054E)</div><div>User Manual</div></div><div></div><div><div>PRODUCT IS COMPATIBLE FOR BARCODE PRINTERS</div></div></div>	<div><div>Vretti 410B USB User Manual: Installation and Operation Guide</div><div>Comprehensive user manual for the Vretti 410B USB barcode printer. Includes detailed instructions for installation, setup, printing, troubleshooting, and maintenance across Windows, macOS, Linux, and ChromeOS.</div></div>
<div><div><div>Thermal Barcode Printer</div><div><div>vretti</div><div>User Manual</div><div>Thermal Barcode Printer</div></div><div></div><div><div>PRODUCT IS COMPATIBLE FOR BARCODE PRINTERS</div></div></div></div>	<div><div>Vretti 420B Thermal Barcode Printer User Manual</div><div>User manual for the Vretti 420B Thermal Barcode Printer, covering installation, driver setup for Windows and Mac, browser printing, button functions, LED status, specifications, and troubleshooting.</div></div>
<div><div><div>vretti</div><div>420B USB+WIFI</div><div>User Manual</div></div><div></div><div><div>PRODUCT IS COMPATIBLE FOR BARCODE PRINTERS</div></div></div>	<div><div>Vretti 420B USB+WIFI User Manual</div><div>User manual for the Vretti 420B USB+WIFI barcode printer, covering installation, setup, troubleshooting, and usage for various operating systems including Windows, Mac, Linux, iOS, Android, and ChromeOS.</div></div>