

Manuals+

[Q & A](#) | [Deep Search](#) | [Upload](#)

Manuals.plus /

> [Ajblg](#) /

> Ajblg Air Tracker Tags User Manual - Model B0DX76PMMH

Ajblg B0DX76PMMH

Ajblg Air Tracker Tags User Manual

Model: B0DX76PMMH

INTRODUCTION

The Ajblg Air Tracker Tag is a compact Bluetooth item locator designed to help you find your belongings using the Apple Find My app. This device is compatible exclusively with iOS devices and offers features such as nearby tracking with sound, long-distance tracking via the Find My network, left-behind reminders, and a lost mode. Its durable, waterproof design and replaceable battery ensure reliable performance for tracking keys, bags, luggage, pets, and wallets.

SETUP AND PAIRING

Follow these steps to set up your Ajblg Air Tracker Tag and pair it with your iOS device.

1. Prepare Your iOS Device

- Ensure Bluetooth is enabled on your iPhone or iPad.
- Ensure Location Services are enabled for the Find My app.
- Open the **Find My** app on your iOS device.

2. Pairing the Air Tracker Tag

1. In the Find My app, tap on the **Items** tab.
2. Tap **Add Item**, then select **Other Supported Items**.
3. Press the button on your Ajblg Air Tracker Tag once. You will hear a tone indicating it's ready for pairing.
4. On your iOS device, tap **Connect** when the "WL FINDER" device appears.
5. Follow the on-screen prompts to name your item and assign an emoji.

Simple Matching

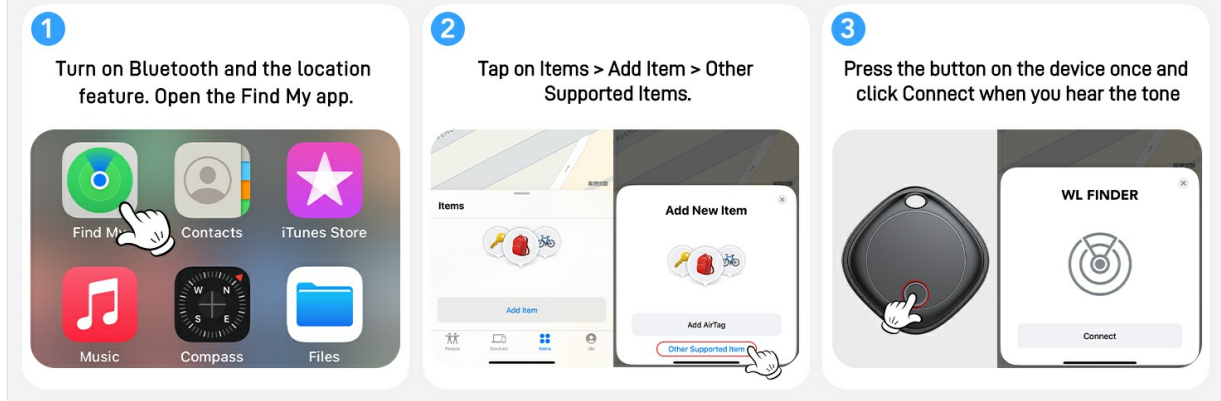


Image: A visual guide showing the three steps for simple matching: opening the Find My app, selecting "Add Item" and "Other Supported Items", and pressing the tracker button to connect.

OPERATING INSTRUCTIONS

Finding Nearby Items

When your Ajbgl Air Tracker Tag is within Bluetooth range (up to 200ft/60m), you can use the Find My app to locate it.

- Open the **Find My** app.
- Select the item you wish to locate from the **Items** tab.
- Tap **Play Sound**. The Air Tracker Tag will emit a loud sound (80-100 dB) to help you pinpoint its location. You can also ask Siri for assistance.

Works with Find My

Base on Apple Find My Network



Image: An iPhone screen showing the "Play Sound" option within the Find My app, next to an Ajblg Air Tracker Tag. This illustrates how to make the tracker emit a sound to find nearby items.

Finding Far Away Items (Lost Mode)

If your item is outside the Bluetooth range, the Apple Find My network can help you locate it.

- In the **Find My** app, select your lost item.
- Scroll down and enable **Lost Mode**.
- Enter a phone number or email address where you can be contacted if someone finds your item.
- The Find My network, composed of millions of iOS devices, will anonymously and securely detect your tracker's location and update it on your map. You will receive a notification when its location is updated.
- You can then use the map navigation in the Find My app to get directions to your item's last known location.



Finding Things Together

- One locator can share up to 5 Apple devices.
- One account can be connected to up to 32 anti-lost devices.

[Note: Please ensure your iPhone, iPad, iMac is updated to iOS 17](#)

Image: An iPhone displaying the "About this Shenzhen Winnershine electronics co.,ltd WL FINDER" screen with serial number and owner information, accessible via the 'Identify Found Item' function in Find My. This demonstrates how Lost Mode allows others to retrieve owner information.

Left-Behind Reminders

To prevent leaving your items behind, you can enable Left-Behind Reminders.

- In the **Find My** app, select your item.
- Under **Notifications**, tap **Notify When Left Behind**.
- Configure locations where you do **not** want to be notified (e.g., your home).
- If you leave the configured safe zone without your item, your iOS device will send you an immediate notification.

Left-Behind Remind



"Key" left behind

20mins ago

This item is no longer detected near you.
It was last seen near Home.



Image: An iPhone displaying a "Key left behind" notification, indicating the item is no longer detected nearby. An Ablg Air Tracker Tag attached to a set of keys is shown in the foreground.

Sharing Your Tracker

You can share the location of your Ablg Air Tracker Tag with up to 5 other Apple users.

- In the **Find My** app, select the item you wish to share.
- Tap **Share This Item** and follow the instructions to invite others.
- Ensure your iPhone, iPad, or iMac is updated to iOS 17 or later for this feature.

4 Positioning Accurate to The Metre

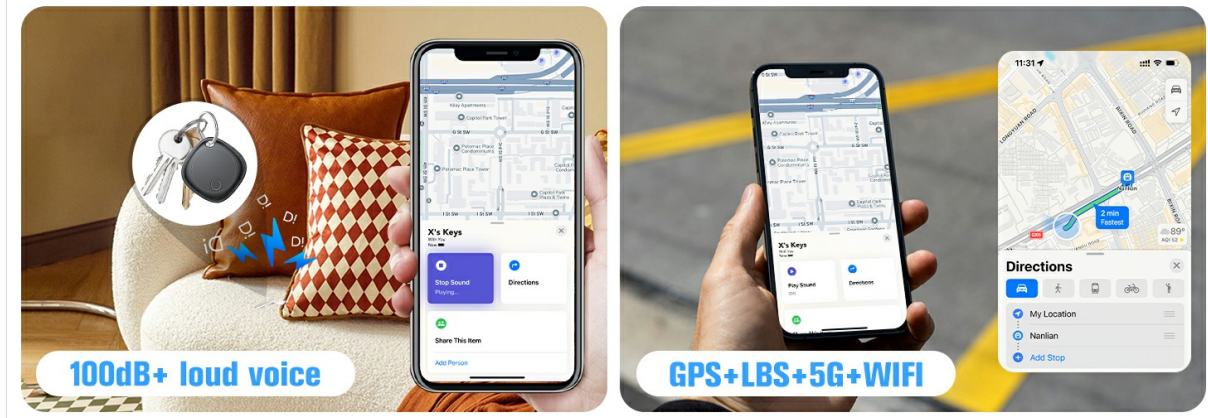


Image: A graphic illustrating how an Ajblg Air Tracker Tag's location can be shared among multiple users on a map interface, allowing friends and family to track items.

MAINTENANCE

Battery Replacement

The Ajblg Air Tracker Tag uses a replaceable CR2032 coin cell battery, which typically lasts up to 2 years. The device will notify you through the Find My app when the battery level is low and requires replacement.

1. Locate the small notch on the side of the tracker.
2. Use a small tool (e.g., a coin or flathead screwdriver) to gently pry open the tracker casing at the notch.
3. Carefully remove the old CR2032 battery.
4. Insert a new CR2032 battery with the positive (+) side facing up.
5. Align the two halves of the tracker and press firmly until they click securely into place.

Simple Replacement



Image: A three-step diagram illustrating the process of replacing the battery: Step 1 shows how to remove the cover, Step 2 shows taking out the old battery, and Step 3 shows putting in a new battery.

Water Resistance

The Ajblg Air Tracker Tag is rated IP67 for dust and water resistance. This means it can withstand immersion in up to 1 meter of water for 30 minutes. While it is safe for splashes, rain, and brief submersion, it is not recommended for prolonged underwater use.

IP67 Dust Waterproof



Image: An Ajblg Air Tracker Tag with water droplets on its surface, demonstrating its IP67 dust and water resistance. The image shows the tracker attached to a cyclist's gear.

TROUBLESHOOTING

Device Not Syncing or Connecting

- **Check Bluetooth:** Ensure Bluetooth is enabled on your iOS device.
- **Check Location Services:** Verify that Location Services are enabled for the Find My app.
- **Restart Device:** Try restarting your iOS device and the Air Tracker Tag (by temporarily removing and reinserting the battery).
- **Battery Level:** A low battery can affect connectivity. Replace the CR2032 battery if it's low or depleted.
- **Reset Tracker:** If issues persist, you may need to reset the tracker and re-pair it. Consult the manufacturer's website for specific reset instructions if not covered here.

Sound Not Playing or Too Quiet

- **Volume Settings:** Ensure your iOS device's volume is not muted or too low.
- **Obstructions:** Make sure the tracker's speaker is not covered or obstructed.

- **Battery Level:** A weak battery can result in a quieter sound. Replace the battery.
- **Range:** The sound feature works best when the tracker is within close Bluetooth range.

Inaccurate Location Tracking

- **Network Coverage:** Location accuracy relies on the density of the Apple Find My network. In areas with fewer iOS devices, updates may be less frequent or precise.
- **Environmental Factors:** Thick walls, large metal objects, or dense foliage can interfere with Bluetooth and GPS signals.
- **Refresh Find My App:** Close and reopen the Find My app to refresh the location data.

SPECIFICATIONS

| Feature | Detail |
|-------------------------|---|
| Model | B0DX76PMMH |
| Brand | Ajblg |
| Connectivity | Bluetooth |
| Compatibility | iOS Only (Apple Find My App) |
| Dimensions (L x W x Th) | 1.36" x 1.36" x 0.37" (3.45 cm x 3.45 cm x 0.95 cm) |
| Item Weight | 1.44 ounces (10 g) |
| Battery Type | 1 x CR2032 (included, replaceable) |
| Battery Life | Up to 2 years |
| Water Resistance | IP67 (Dust and Water Resistant) |
| Sound Level | 80-100 dB |
| Bluetooth Range | Up to 200ft / 60m |
| Material | Plastic |

WARRANTY AND SUPPORT

For warranty information or technical support, please refer to the product packaging or contact Ajblg customer service directly.

- **Online Support:** Visit the official Ajblg website for FAQs and support resources.
- **Contact:** Refer to the contact information provided with your product for direct assistance.