

bonsaii C292-A

Bonsaii 6-Sheet Cross-Cut Paper Shredder C292-A User Manual

IMPORTANT SAFETY INSTRUCTIONS

Please read these instructions carefully before using your Bonsaii paper shredder. Keep this manual for future reference.

- Keep fingers, loose clothing, hair, and ties away from the paper entry slot to prevent injury.
- Keep children and pets away from the shredder at all times.
- Do not shred metal objects, wet paper, adhesive labels, or any materials not specified for shredding.
- Unplug the shredder from the power outlet when not in use or before cleaning.
- Do not operate the shredder with a damaged power cord or plug. Contact customer support for assistance.
- Empty the waste bin regularly to prevent paper jams and ensure optimal performance.
- Do not place the shredder near heat sources or in direct sunlight.

PRODUCT OVERVIEW

The Bonsaii C292-A is a compact cross-cut paper shredder designed for home and small office use, offering P-4 security for confidential documents.

Main Components

- **Shredder Head:** Contains the cutting mechanism, control panel, and motor.
- **Waste Bin:** Collects shredded material.
- **Control Panel:** Includes the power switch and LED indicators.

Kompakte Größe großes Staubaufnahmevermögen

Es verfügt über einen eingebauten **6-Liter-Mülleimer**, in dem geschreddertes Papier und Kreditkarten gesammelt werden



Image: Top view of the Bonsaii C292-A shredder head, showing the paper entry slot, control switch (FWD, AUTO, OFF, REV), and LED indicators for power and overheat status.

SETUP

1. **Unpack:** Carefully remove the shredder from its packaging.
2. **Position the Waste Bin:** Place the waste bin on a flat, stable surface.
3. **Attach Shredder Head:** Carefully place the shredder head onto the waste bin, ensuring it is securely seated.
4. **Connect Power:** Plug the power cord into a standard electrical outlet.

OPERATING INSTRUCTIONS

Control Switch Settings

- **FWD (Forward):** Manual shredding.
- **AUTO (Automatic):** Shredder starts automatically when paper is inserted.
- **OFF:** Turns the shredder off.
- **REV (Reverse):** Reverses the shredding direction to clear paper jams.

Shredding Documents

1. Ensure the shredder is plugged in and the waste bin is properly seated.
2. Set the control switch to the 'AUTO' position. The power indicator (blue LED) will illuminate.
3. Insert up to 6 sheets of A5 paper (or 3 sheets of folded A4 paper) into the paper entry slot. The shredder will automatically start and stop once shredding is complete.
4. For credit cards, staples, or small paper clips, insert them into the designated entry slot (if separate) or the main paper entry.



Image: The Bonsaii C292-A shredder demonstrating its capability to shred paper (A5 and folded A4), credit cards, staples, and paper clips.

Unterstützt Dokumente bis zum Format A5

Zum Beispiel Rechnungen, Kreditkarten und Dokumente



Tips: A4-Papier muss vor dem Schreddern in der Mitte gefaltet werden.

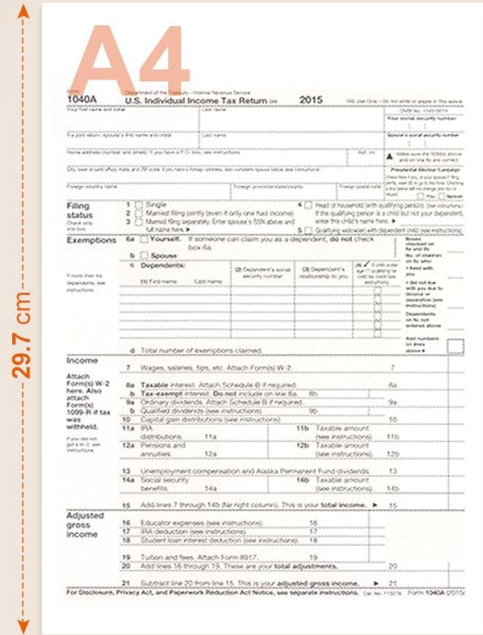
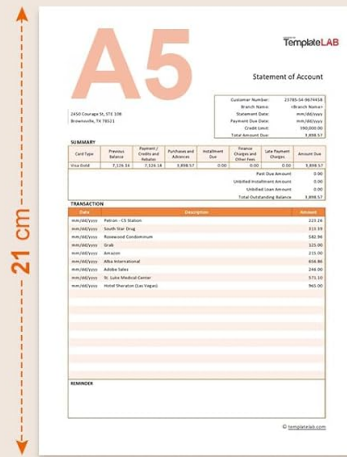


Image: A detailed view of the Bonsai C292-A shredder's paper entry, illustrating how A5 documents and folded A4 documents are inserted for shredding.

Hocheffiziente Aktenvernichtungsleistung

Vernichtet Papier kontinuierlich für 2 Minuten
und erledigt so den Vernichtungsvorgang schnell



Image: A visual comparison showing the difference between struggling with an inefficient shredder and the smooth, efficient operation of the Bonsaii C292-A shredder.

Overheat Protection

The shredder is equipped with an overheat protection system. It has a continuous run time of approximately 2 minutes. If used continuously for too long, the shredder will automatically shut off to prevent damage. The overheat indicator (red LED) will illuminate.

If the shredder overheats, allow it to cool down for at least 30 minutes before resuming operation. This helps prolong the life of the motor.

Hocheffizienter Elektroantrieb



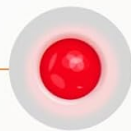
Laufzeit
2 Min



Abkühlzeit
30 Min



Eingeschaltet
- Blau



Überhitzung
- Rot



Image: Diagram illustrating the shredder's 2-minute run time and 30-minute cool-down period, along with the blue LED for power on and red LED for overheat warning.

MAINTENANCE

Emptying the Waste Bin

Regularly empty the 6-liter waste bin to maintain optimal shredding performance and prevent paper jams. Unplug the shredder before removing the head to empty the bin.

Hochsicherheits-Aktenvernichtergröße

Erreicht das hohe Sicherheitsniveau P4 und kann tägliche Dokumente wie Rechnungen und Verträge schnell vernichten



Image: The Bonsaii C292-A shredder highlighting its compact size and 6-liter waste bin capacity, shown with a stack of paper and a 2-minute run time indicator.

Cleaning

- Always unplug the shredder before cleaning.
- Wipe the exterior of the shredder with a soft, dry cloth. Do not use abrasive cleaners or solvents.
- Do not spray any liquids directly into the shredder.

TROUBLESHOOTING

Problem	Possible Cause	Solution
Shredder does not turn on.	Not plugged in; power switch in 'OFF' position; shredder head not properly seated.	Ensure power cord is securely plugged in; set switch to 'AUTO' or 'FWD'; re-seat shredder head on waste bin.
Paper jam.	Too many sheets inserted; paper inserted incorrectly.	Switch to 'REV' to clear the jam. If unsuccessful, unplug, carefully remove shredder head, and manually clear paper. Do not force.

Problem	Possible Cause	Solution
Overheat indicator (red LED) is on.	Continuous operation exceeded run time.	Turn off the shredder and allow it to cool down for at least 30 minutes.
Shredder runs but does not shred.	Waste bin is full.	Empty the waste bin.

SPECIFICATIONS

- **Model:** C292-A
- **Shred Type:** Cross-cut
- **Security Level:** P-4
- **Sheet Capacity:** 6 sheets (A5), 3 sheets (folded A4)
- **Shred Size:** 5 x 15 mm
- **Waste Bin Capacity:** 6 Liters
- **Continuous Run Time:** 2 minutes
- **Cool-down Time:** 30 minutes
- **Dimensions (L x W x H):** 23.7 cm x 13.3 cm x 29.7 cm
- **Weight:** 1.7 kg
- **Operation Mode:** Automatic and Manual
- **Shreds:** Paper, Credit Cards, Staples, Paper Clips



Image: The Bonsaii C292-A shredder displaying its compact dimensions (237mm x 133mm x 297mm) and illustrating the 5x15mm cross-cut shred size for both paper and credit cards, indicating high security.

WARRANTY AND SUPPORT

Bonsaii products are manufactured to high-quality standards. For warranty information or technical support, please contact Bonsaii customer service.

Customer Service Email: customer-care@bonsaii.com

Please have your model number (C292-A) and purchase details ready when contacting support.