

AZZA CSAZ-812

AZZA CSAZ-812 Diamond ATX Case User Manual

Model: CSAZ-812 | Brand: AZZA

1. INTRODUCTION

Welcome to the user manual for the AZZA CSAZ-812 Diamond ATX Case. This innovative computer case is designed to provide a unique aesthetic and robust functionality for your PC build. Featuring a distinctive diamond shape, tempered glass panels, and efficient cooling options, it offers an exceptional platform for high-performance components. This manual will guide you through the setup, operation, maintenance, and troubleshooting of your new case.



Figure 1.1: Front view of the AZZA CSAZ-812 Diamond ATX Case, showcasing its unique design and integrated AZZA logo.

2. KEY FEATURES

- **Innovative Diamond Design:** A striking and unique chassis shape that stands out.
- **Tempered Glass Panels:** Removable tempered glass and top panel for easy installation and component visibility.
- **Advanced Cooling Support:** Vertical bracket accommodates up to three 120mm fans or a 360mm radiator for superior thermal management.
- **Pre-installed RGB Fan:** Includes a pre-installed 180mm digital RGB fan on the top panel for immediate cooling and aesthetic appeal.
- **Integrated AZZA Hub:** Simplifies cable management and RGB control.
- **Versatile Storage Options:** Dedicated mounting points for 2.5" SSDs.
- **Convenient Front I/O:** Easily accessible ports including USB 3.0 and Type-C.



Figure 2.1: Detail of the front I/O panel, featuring LED control, USB 3.0, audio jacks, and a Type-C port.



Figure 2.2: Illustration of optimal airflow within the case, with cool air intake from the bottom and sides, and hot air exhaust from the top.



Figure 2.3: Diagram showing the designated mounting locations for 2.5-inch Solid State Drives (SSDs).



Figure 2.4: Overview of the vertical bracket, supporting a 360mm radiator or up to three 120mm cooling fans.



Figure 2.5: Wiring diagram for the integrated AZZA Hub, showing connections for PWM, Addressable RGB, SATA power, and reset/LED switch.



Figure 2.6: The AZZA Diamond case with a graphics card and cooling fans installed, demonstrating internal component visibility.

3. SETUP AND INSTALLATION

Before beginning installation, ensure you have all necessary components and tools. The AZZA CSAZ-812 case is designed for ease of assembly with its removable panels.

3.1 Preparing the Case

1. Carefully unpack the case and remove all packaging materials.
2. Place the case on a stable, flat surface.

3. Identify and remove the tempered glass side panels and the top panel by unscrewing the retaining thumbscrews. This provides full access to the interior.

3.2 Component Installation

1. **Power Supply Unit (PSU):** Install your PSU into the designated bottom-mount compartment. Secure it with screws.
2. **Motherboard:** Align your ATX motherboard with the standoffs inside the case. Secure it with the appropriate screws.
3. **Storage Drives:** Install 2.5-inch SSDs into their dedicated mounting points.
4. **Graphics Card (GPU):** Install your graphics card into the PCIe slot on your motherboard. Ensure it is securely seated and fastened.
5. **Cooling Fans/Radiator:** Utilize the vertical bracket for installing additional 120mm fans or a 360mm radiator as needed for your cooling solution. The pre-installed 180mm RGB fan is located on the top panel.
6. **Cable Management:** Route all power and data cables neatly through the provided cutouts and tie-down points to ensure optimal airflow and a clean build. Connect the front I/O cables (USB, audio, power/reset) to your motherboard.

3.3 Final Assembly

1. Once all components are installed and cables are managed, reattach the tempered glass side panels and the top panel.
2. Ensure all thumbscrews are tightened to secure the panels.

4. OPERATING INSTRUCTIONS

After successful assembly, your AZZA CSAZ-812 Diamond case is ready for operation.

4.1 Powering On

Press the power button located on the front I/O panel to turn on your computer. The pre-installed 180mm digital RGB fan will illuminate, and your system should boot.

4.2 Using Front I/O Ports

The front I/O panel provides convenient access to various ports:

- **USB 3.0 Ports:** For high-speed data transfer with compatible devices.
- **USB Type-C Port:** For modern devices requiring a Type-C connection.
- **Audio Jacks:** For connecting headphones and microphones.
- **LED Control Button:** Use this button to cycle through various RGB lighting modes for the pre-installed fan and other connected RGB components via the AZZA Hub.

5. MAINTENANCE

Regular maintenance helps ensure the longevity and optimal performance of your computer case.

5.1 Cleaning

- **Exterior:** Use a soft, damp cloth to wipe down the exterior surfaces, including the tempered glass

panels. Avoid abrasive cleaners.

- **Interior:** Periodically use compressed air to remove dust buildup from inside the case, especially around fans, radiators, and component heatsinks.
- **Dust Filters:** If applicable, remove and clean any dust filters to maintain optimal airflow. While specific filter locations are not detailed, check all intake areas for removable filters.

5.2 Fan Maintenance

Ensure that all fans, including the pre-installed 180mm fan, are free from obstructions and dust. Clean fan blades gently with a soft brush or compressed air if necessary.

6. TROUBLESHOOTING

This section addresses common issues you might encounter with your computer case.

6.1 No Power When Pressing Power Button

- **Check PSU:** Ensure your Power Supply Unit (PSU) is properly connected to the wall outlet and the power switch on the PSU is in the 'ON' position.
- **Front Panel Connectors:** Verify that the power button cable from the case's front I/O is correctly connected to the corresponding pins on your motherboard. Refer to your motherboard manual for pin layout.
- **Motherboard Power:** Confirm that the 24-pin ATX power cable and the CPU power cable from the PSU are securely connected to the motherboard.

6.2 RGB Fan Not Lighting Up

- **AZZA Hub Connection:** Ensure the pre-installed fan's RGB cable is correctly connected to the AZZA Hub, and the AZZA Hub itself is powered via a SATA power connector from your PSU.
- **Motherboard RGB Header:** If controlling RGB via motherboard software, ensure the AZZA Hub's RGB cable is connected to the correct addressable RGB header on your motherboard (usually 3-pin, 5V).
- **LED Button:** Press the LED control button on the front I/O panel to cycle through modes or ensure it's not turned off.

6.3 Poor Airflow/Overheating

- **Fan Orientation:** Verify that all installed fans are oriented correctly for optimal airflow (intake for cool air, exhaust for hot air).
- **Dust Buildup:** Clean any dust from fans, radiators, and dust filters as described in the Maintenance section.
- **Cable Management:** Ensure cables are neatly routed and not obstructing airflow paths.

7. SPECIFICATIONS

Feature	Specification
Model Name	Diamond
Item Model Number	CSAZ-812

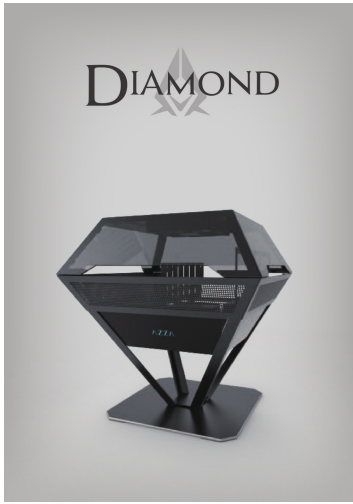
Feature	Specification
Brand	AZZA
Case Type	Mid Tower
Motherboard Compatibility	ATX
Material	Glass, Mesh, Plastic
Product Dimensions (LxWxH)	20.3 x 19.5 x 19.5 inches (51.56 x 49.53 x 49.53 cm)
Item Weight	22.7 pounds (10.3 kg)
Number of USB 3.0 Ports	1
Cooling Method	Fan
Power Supply Mounting Type	Bottom Mount
Pre-installed Fan	1x 180mm Digital RGB (Top)
Radiator Support	Up to 360mm (Vertical Bracket)
Fan Support	Up to 3x 120mm (Vertical Bracket)

8. WARRANTY AND SUPPORT

Specific warranty details for the AZZA CSAZ-812 Diamond ATX Case are not provided in this document. For comprehensive warranty information, please refer to the official AZZA website or contact AZZA customer support directly.

For technical assistance, troubleshooting beyond this manual, or inquiries regarding parts, please visit the AZZA support page or contact their customer service team. Always provide your product model number (CSAZ-812) when seeking support.

This manual is intended for informational purposes only. AZZA reserves the right to make changes to product specifications without prior notice.



[AZZA Diamond CSAZ-812 PC Case: Specifications and Features](#)

Explore the AZZA Diamond CSAZ-812 PC case, featuring a unique diamond-shaped design, tempered glass panels, extensive cooling support, and RGB lighting. View detailed specifications and installation guidance.

lang:en **score:28** filesize: 4.38 M page_count: 13 document date: 2024-11-06