

RF-3028A

Generic 5-in-1 Electric Shaver for Women (Model RF-3028A) - Instruction Manual

Comprehensive instruction manual for the Generic 5-in-1 Electric Shaver for Women (Model RF-3028A). Learn about setup, operation, maintenance, and troubleshooting for this versatile cordless hair removal device, featuring replaceable heads for facial, eyebrow, nose, and body trimming.

IMPORTANT SAFETY INFORMATION

Please read all instructions carefully before using the device. Keep this manual for future reference.

- This appliance is not intended for use by persons (including children) with reduced physical, sensory or mental capabilities, or lack of experience and knowledge, unless they have been given supervision or instruction concerning use of the appliance by a person responsible for their safety.
- Children should be supervised to ensure that they do not play with the appliance.
- Do not use the appliance if the charging cable or plug is damaged. Contact customer service for replacement.
- Do not immerse the main body of the shaver in water for extended periods. The heads are washable, but ensure the main unit's charging port is dry before charging.
- Keep the device away from heat sources and direct sunlight.
- Do not attempt to disassemble or repair the device yourself. This will void the warranty.

PRODUCT OVERVIEW

The Generic 5-in-1 Electric Shaver is a versatile grooming kit designed for women, offering multiple functions for comprehensive hair removal. This cordless device comes with various interchangeable heads to cater to different body areas and hair types, ensuring a smooth and comfortable experience.

5-IN-1 RECHARGEABLE GROOMING KIT

One Machine with
Multiple Use to Meet
Various Needs



Foil Hair Trimming



Bikini Trimmer



Nose Hair Trimming



Eyebrow Modelling



Facial Hair shaving
(for any place)

Image: The 5-in-1 Electric Shaver kit, showcasing the main unit and its five distinct interchangeable heads for various grooming tasks.

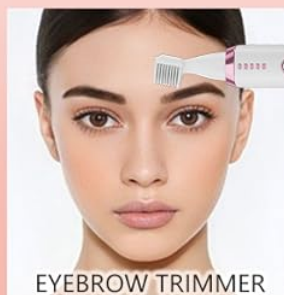


FACIAL TRIMMER
Suitable for fine
hair and residual



NOSE HAIR TRIMMER
Suitable for nose
and ear hair trimming

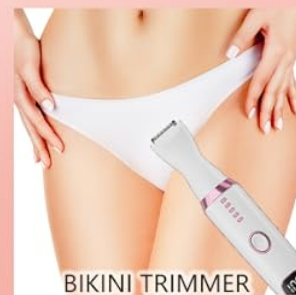
5 IN 1 ELECTRIC RAZOR FOR WOMEN



EYEBROW TRIMMER
Suitable for
shaving eyebrows



FOIL HAIR TRIMMER
Suitable for Short Residual
Close Shave For Sensitive



BIKINI TRIMMER
Suitable for bikini
areas hair removal

Image: A visual representation of the five interchangeable heads: facial trimmer, foil hair trimmer, nose hair trimmer, eyebrow trimmer, and bikini trimmer, highlighting their specific uses.

PACKAGE CONTENTS

Your Generic 5-in-1 Electric Shaver package includes the following items:

- Electric Razor Main Unit with Double-sided Razor Head
- Rotary Facial Hair Trimmer Head
- Long Hair Trimmer Head
- Nose Trimmer Head
- Eyebrow Trimmer Head with Detachable Limit Comb
- Additional Limit Comb for Double-sided Razor Head
- USB Charging Cable
- Cleaning Brush
- User Manual



Image: A complete view of all items included in the 5-in-1 electric shaver kit.

SETUP AND CHARGING

Charging the Device

The shaver is cordless and rechargeable. Before first use, fully charge the device. A full charge takes approximately 2 hours and provides up to 90 minutes of continuous runtime.

1. Connect the USB charging cable to the charging port at the bottom of the shaver.
2. Plug the other end of the USB cable into a compatible USB power source (e.g., power bank, laptop, car charger, or adapter).
3. The LED display will indicate the battery power level during charging. Ensure it reaches 100% for optimal

performance.



Image: The shaver being charged via USB, demonstrating its compatibility with various power sources like power banks, laptops, and car chargers.

Attaching and Detaching Shaver Heads

The shaver features an easy twist-and-lock mechanism for changing heads.

1. To detach a head: Hold the main unit firmly and twist the attached head counter-clockwise until it unlocks and can be pulled off.
2. To attach a head: Align the desired head with the main unit, push it down gently, and twist clockwise until it clicks securely into place.

PORTABLE & NICE FOR TRAVEL



Image: Visual instructions on how to easily replace the shaver heads by rotating to unlock, taking out, inserting the new head, and rotating to lock.

OPERATING INSTRUCTIONS

General Use (Wet & Dry)

This electric shaver is designed for both wet and dry use. For a comfortable shave, you can use it with foam or gel in the shower, or dry for quick touch-ups. The hypoallergenic stainless steel blades ensure a painless and skin-friendly experience.

WHOLE BODY WASHABLE

EASY TO CLEAN



Image: The shaver being used for both dry shaving on a leg and wet shaving in a bathtub, highlighting its wet and dry functionality.

Using the Double-sided Razor Head (Body Shaver)

This head is ideal for larger areas like legs, arms, underarms, and the bikini area. It provides a close and efficient shave.

- Attach the double-sided razor head to the main unit.
- For best results, hold the shaver at a 30-45 degree angle against the skin and move it gently against the direction of hair growth.
- Use the additional limit comb for the double-sided razor head if you prefer to trim hair to a specific length rather than a close shave.

HAIR & BIKINI TRIMMER

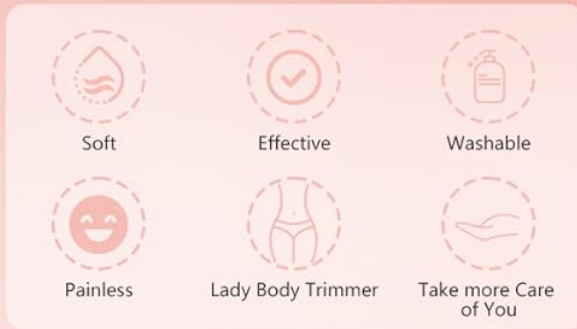


Image: The hair and bikini trimmer head, illustrating its features for soft, effective, washable, painless, and body care use.

Using the Rotary Facial Hair Trimmer Head

This head is specifically designed for delicate facial areas such as the upper and lower lip, cheeks, chin, and neck. It effectively removes peach fuzz or fine hair.

- Attach the rotary facial hair trimmer head.
- Gently move the trimmer in small circular motions over the desired area.

Using the Eyebrow Trimmer Head

Achieve perfectly shaped eyebrows with this precision trimmer head.

- Attach the eyebrow trimmer head.
- Use the detachable limit comb to trim eyebrows to a uniform length.
- Without the comb, use the blade directly for precise shaping and removing stray hairs.



Image: The long hair trimmer and facial trimmer heads in action, demonstrating their effectiveness for eyebrow shaping and facial hair removal.

Using the Nose Trimmer Head

Safely and comfortably remove unwanted nose and ear hair.

- Attach the nose trimmer head.
- Gently insert the trimmer tip into your nostril or ear canal and move it in a circular motion.

MAINTENANCE AND CLEANING

Regular cleaning ensures optimal performance and hygiene of your shaver.

- The shaver heads are washable. After each use, detach the head and rinse it under running water.
- Use the provided cleaning brush to remove any trapped hairs from the blades and inside the head.
- Ensure the shaver heads are completely dry before reattaching them to the main unit or storing.
- The main unit is also whole-body washable, but always ensure the charging port is dry before connecting the USB cable.

HOW TO REPLACE THE SHAVER HEAD ?



Image: The shaver head being rinsed under running water, illustrating its easy-to-clean, whole-body washable design.

TROUBLESHOOTING

If you encounter any issues with your Generic 5-in-1 Electric Shaver, please refer to the following common solutions:

- **Device not turning on:** Ensure the device is fully charged. Check the LED display for battery level.
- **Poor trimming performance:** Clean the shaver head thoroughly to remove any accumulated hair or debris. Ensure the blades are not dull (though designed for longevity, extreme wear can occur).
- **Skin irritation:** Ensure your skin is clean before use. If using for wet shaving, apply shaving cream or gel. Avoid pressing too hard against the skin.
- **Head not attaching securely:** Ensure the head is correctly aligned with the main unit and twisted clockwise until it clicks into place.

If the problem persists, please contact customer support for further assistance.

SPECIFICATIONS

Feature	Detail
Product Dimensions	1.96 x 1.1 x 6.3 inches; 7.05 ounces
Item Model Number	RF-3028A
Batteries	1 Lithium Ion battery required (included)
Manufacturer	Ourceccare

Recommended Uses	Suitable for Whole Body Hair
Special Features	5-in-1, LED Screen Display, Cordless, Detachable Head, Dry & Wet Shave, Portable, Rechargeable
Power Source	Battery Powered, Cordless, Rechargeable
Model Name	Multifunctional shaver

WARRANTY AND SUPPORT

Your satisfaction is our top priority. Our commitment is to resolve any issues promptly and ensure a stress-free shopping experience. For any product-related inquiries, technical support, or warranty claims, please contact our customer service team through the retailer's platform where you purchased the product.

Legal Disclaimer

Statements regarding dietary supplements have not been evaluated by the FDA and are not intended to diagnose, treat, cure, or prevent any disease or health condition.