

Manuals+

[Q & A](#) | [Deep Search](#) | [Upload](#)

Manuals.plus /

› [MARGAR](#) /

› MARGAR Pro Serger Sewing Machine BFJ0000002 User Manual

MARGAR BFJ0000002

MARGAR Pro Serger Sewing Machine BFJ0000002 User Manual

Model: BFJ0000002 | Brand: MARGAR

INTRODUCTION

This manual provides detailed instructions for the safe and efficient operation of your MARGAR Pro Serger Sewing Machine. Please read this manual thoroughly before using the machine to ensure proper setup, operation, and maintenance. Retain this manual for future reference.



Image: The MARGAR Pro Serger Sewing Machine, showcasing its compact design and four orange thread spools on the thread stand.

IMPORTANT SAFETY INFORMATION

Always follow basic safety precautions when using electrical appliances to reduce the risk of fire, electric shock, or injury to persons.

- Read all instructions before using the machine.
- Keep fingers away from all moving parts. Special care is required around the sewing machine needle.
- Always switch the sewing machine off and unplug it from the electrical outlet when removing covers, lubricating, or when making any other user servicing adjustments mentioned in the instruction manual.
- Use this appliance only for its intended use as described in this manual.

- Never operate the sewing machine if it has a damaged cord or plug, if it is not working properly, if it has been dropped or damaged, or dropped into water.
- Never drop or insert any object into any opening.
- Do not use outdoors.

PRODUCT OVERVIEW AND COMPONENTS

Familiarize yourself with the various parts of your serger sewing machine for optimal operation.

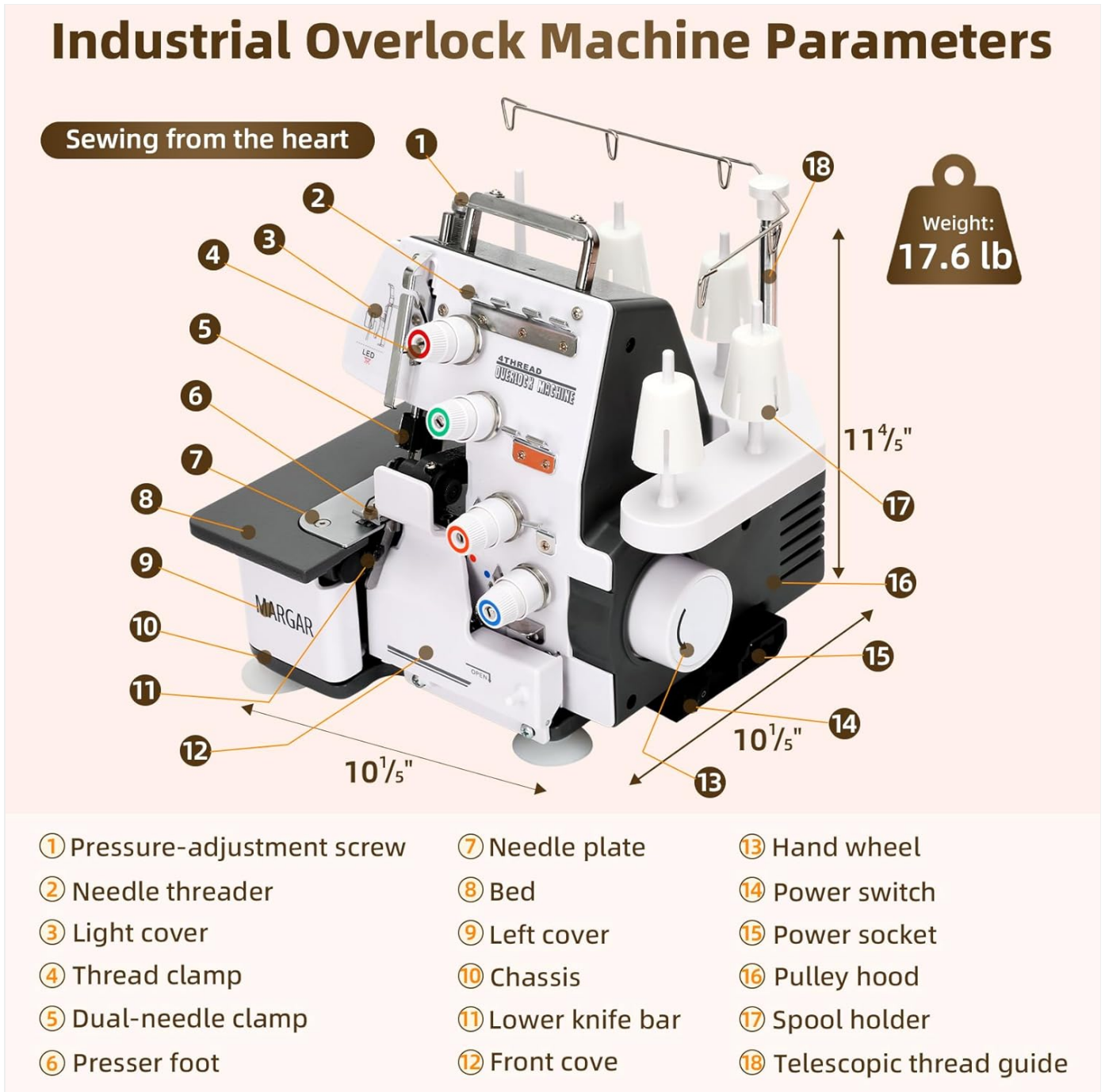


Image: Detailed diagram illustrating the key components of the MARGAR Pro Serger Sewing Machine, including the pressure-adjustment screw, needle threader, light cover, thread clamp, dual-needle clamp, presser foot, needle plate, bed, left cover, chassis, lower knife bar, front cover, hand wheel, power switch, power socket, pulley housing, spool holder, and telescopic thread guide.

1. **Pressure-adjustment screw:** Adjusts the pressure on the presser foot.
2. **Needle threader:** Assists in threading the needles.
3. **Light cover:** Protects the LED light.

4. **Thread clamp:** Secures the threads.
5. **Dual-needle clamp:** Holds the two needles.
6. **Presser foot:** Holds fabric firmly against the feed dogs.
7. **Needle plate:** The flat surface under the needle where stitching occurs.
8. **Bed:** The flat working surface of the machine.
9. **Left cover:** Removable cover on the left side.
10. **Chassis:** The main frame of the machine.
11. **Lower knife bar:** Holds the lower cutting knife.
12. **Front cover:** Removable cover on the front.
13. **Hand wheel:** Manually controls needle movement.
14. **Power switch:** Turns the machine on/off.
15. **Power socket:** Where the power cord connects.
16. **Pulley housing:** Encloses the drive pulley.
17. **Spool holder:** Holds the thread spools.
18. **Telescopic thread guide:** Guides threads from spools to tension discs.

The machine features a **heavy-duty metal body** for durability and stability, and **non-slip rubber suction cup feet** to reduce vibration during operation.

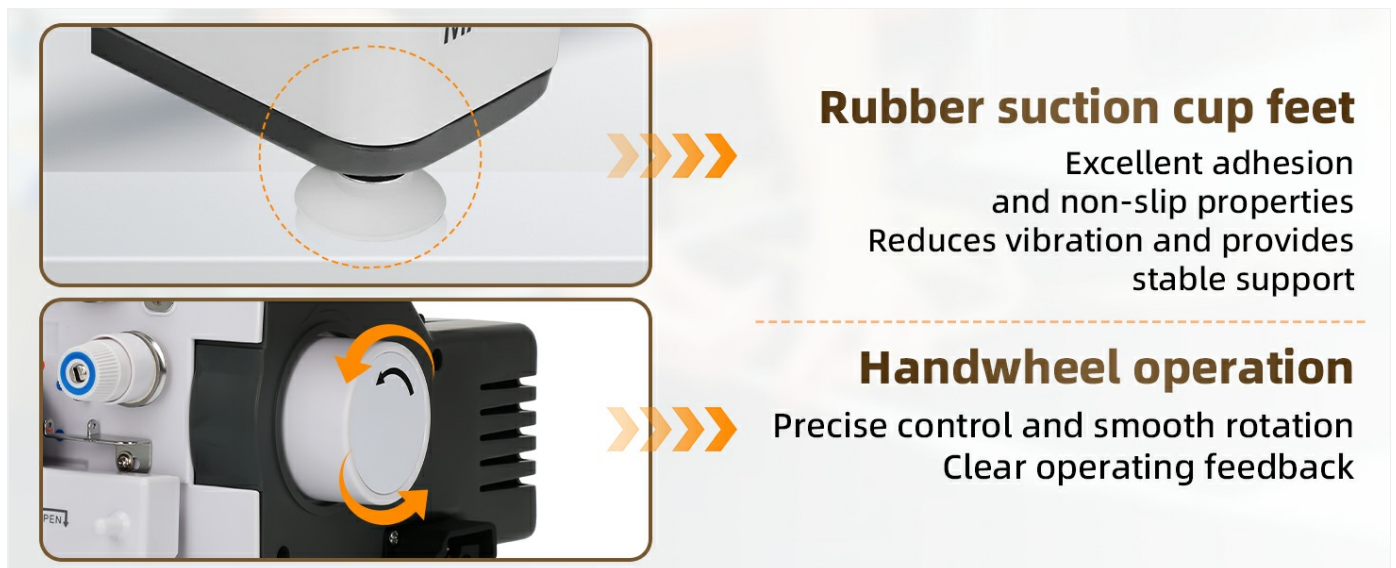


Image: Close-up views of the machine's rubber suction cup feet for stability and the handwheel for precise manual control.

SETUP

Unpacking and Placement

- Carefully remove the machine from its packaging.
- Place the machine on a stable, flat surface. Ensure adequate space around the machine for fabric handling.
- The machine comes pre-threaded for initial testing.

No Installation

After receiving the goods, please first check the manual and the video on the details page, understand clearly before operating our Overlocker Sewing Machine!

Note: For specific threading operations, please refer to the operation video on the detail page



Image: The serger machine is shown ready for immediate use, highlighting its pre-threaded state and plug-and-play convenience.

Power Connection

- Ensure the power switch (14) is in the OFF position.
- Connect the power cord to the power socket (15) on the machine and then to a suitable electrical outlet.

Threading the Machine

The serger features clear color-coded guidelines to simplify the threading process. Refer to the internal diagrams and follow the color-coded paths for each thread.

Thoughtful Design

Sew as you wish



Sharp cutter unit



Threading guide signs



Built-in retractable cable holder



LED lighting



Speed control



Non-slip rubber base

Image: A close-up view of the serger machine's threading area, highlighting the color-coded guides for easy thread path identification. For detailed threading instructions, please consult the operation video provided on the product's detail page or the comprehensive instruction manual included with your machine.

OPERATION

Stitch Capabilities

This serger supports both 3-thread and 4-thread sewing methods, allowing for a variety of professional finishes.

Serger Sewing Machine

3/4 Serger Thread Capability

Serger Sewing Machine stitch



3 Thread Stitch



4 Thread Stitch

Professional lockstitch



No skipped stitches



No skipped stitches

Thick or thin fabrics all can be used

Image: Examples of 3-thread and 4-thread serger stitches, demonstrating the professional lockstitch capability without skipped stitches. The machine can produce up to 12 different stitch patterns, including fine edge, rolled edge, dense copy edge, and wooden ear edge, as well as various widths of 3-thread and 4-thread stitches.



Image: Visual guide showing different multi-stitch options, including 3-thread compact, narrow, and wide edges, 4-thread wide edge, wooden ear edge, and close stitching with curled edges.

Fabric Compatibility

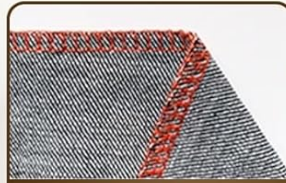
The serger is compatible with a wide range of fabrics, from light to heavy, including cotton, denim, knitting, hemp, chenille, canvas, modal, and mesh. The differential feeding system helps prevent puckering on light fabrics and stretching on elastic fabrics.

Suitable for All Kinds of Fabrics

Consistent overlocked seams



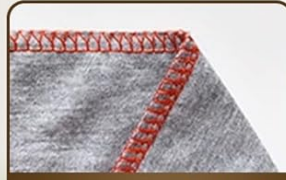
Hemp



Denim



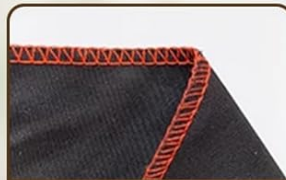
Chenille



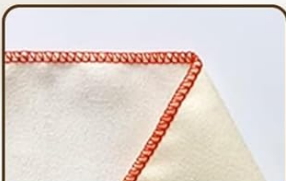
Knitted Fabric



Four threads of locking edges



Three line wide edge



Three line narrow edge

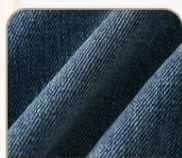


Three lines of close-cuffed

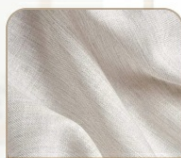


Image: Swatches of various fabrics like hemp, denim, chenille, and knitted fabric, demonstrating the serger's versatility.

Wide Range Of Application Fabrics



Cowboys



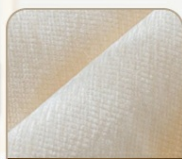
Cotton And Linen



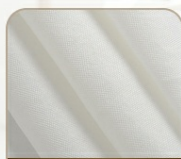
Cotton



Tweed



Chenille



Canvas



Modal



Mesh



Image: A collage showing different fabric types such as Cowboys (denim), Cotton And Linen, Cotton, Tweed, Chenille, Canvas, Modal, and Mesh.

Mesh, all suitable for use with the serger.

Adjustments

Presser Foot Adjustment

The presser foot pressure can be adjusted to accommodate different fabric thicknesses. Increase pressure for thicker fabrics and reduce pressure for lighter fabrics. A lower pressure setting is generally recommended for most applications.



Image: Diagram illustrating the mechanism for adjusting the presser foot, with arrows indicating how to increase or reduce pressure.

Stitch Length Adjustment

To adjust the stitch length (front and back density):

1. Loosen the screw.
2. Adjust the black stitch nut.

For more specific operations, please consult the operation video provided on the product's detail page or the comprehensive instruction manual included with your machine.

Gauge adjustment system

How to adjust the stitch length (front and back density)?

- 1 Loosen the screw
- 2 Adjust the black stitch nut

Note:
For specific operation, please refer to the operation video on the detail page

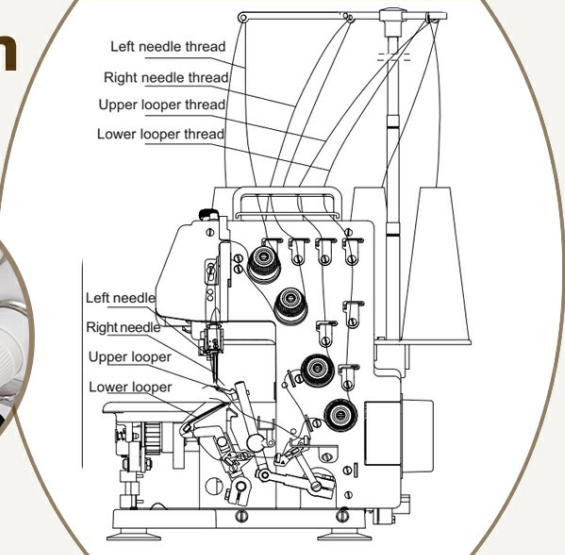
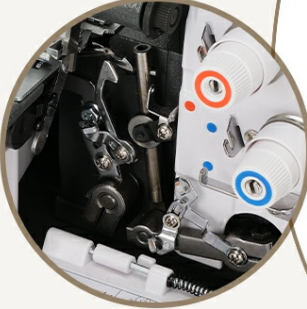


Image: Diagram detailing the gauge adjustment system, showing the components involved in modifying stitch length and density.

Another method for stitch length adjustment:

1. Open the left cover.
2. Use a wrench to turn the screw counter-clockwise to loosen.
3. Turn the cap to increase or decrease stitch length.
4. Use a wrench to adjust the screw clockwise to tighten.

Adjust the stitch Length

Adapt to different fabrics
Adjust within the specified range

- 1 Open the left cover
- 2 Use wrench to turn the screwloosen clockwise
- 3 Turn the cap
 - ↻ Increase stitch length
 - ↻ Decrease stitch length
- 4 Use wrench to adjust the screwtighten counterclockwise

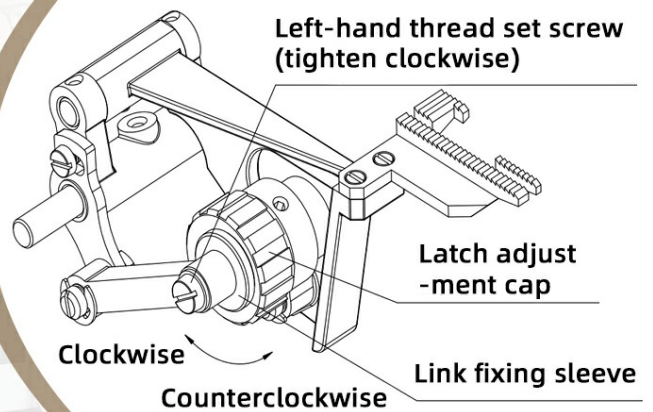


Image: An exploded view diagram illustrating the process of adjusting stitch length by opening the left cover and using a wrench on specific components.

Thread Pressure Adjustment

The color-coded pressure adjustment wheels correspond to specific threads:

- **Red:** Left straight needle thread
- **Green:** Right straight needle thread
- **Orange:** Upward curved needle thread
- **Blue:** Lower curved needle thread

Turn clockwise to tighten thread pressure and counter-clockwise to loosen. Refer to the operation video for specific guidance.

Serger & Overlock Machine

DIY Garment Making

Colour Separation Pressure Adjustment Wheel

- Red - left straight needle thread
- Green - Right straight needle thread
- Orange - Upward curved needle thread
- Blue - Lower curved needle thread

Note: For specific operation, please refer to the operation video on the detail page



Image: Diagram illustrating the color-coded pressure adjustment wheels for each thread, with directions for tightening and loosening thread pressure.

Speed Control

The machine offers high-speed sewing technology, capable of up to 1250 stitches per minute. The speed can be controlled via the foot controller.

Thoughtful Design

Sew as you wish



Sharp cutter unit



Threading guide signs



Built-in retractable cable holder



LED lighting



Speed control



Non-slip rubber base

Image: A close-up view of the serger machine, highlighting the speed control dial for adjusting sewing pace.

LED Lighting

An integrated LED light illuminates the sewing area, reducing visual fatigue and improving accuracy, especially in low-light conditions.



WELL-DESIGNED

Details Of Serger Sewing Machine

Threading guide signs
Colourful dots to guide threading
Simple and easy to use

Lighting function
Self-contained LED lighting
Easy to operate at night

Image: A split image showing the threading guide signs and the illuminated sewing area by the LED light, emphasizing ease of use and visibility.

MAINTENANCE

Cleaning

Regular cleaning is essential for maintaining your serger's performance. Use the included brush to remove lint and dust from the feed dogs, needle plate area, and cutter unit. Ensure the machine is unplugged before cleaning.



Presser foot lifting device
Metal structure, comfortable texture
Precise lifting, flexible height adjustment

Cutter unit
High quality steel or alloy material
Sharp blade, wear-resistant, not easily dulled

Image: Close-up views of the presser foot lifting device and the sharp cutter unit, components that require regular cleaning.

Oiling

To ensure smooth operation, lubricate the machine regularly. Add sewing machine oil to the designated oiling hole after 2-3 weeks of continuous use or if the machine has been inactive for more than half a year.

Overlocker Sewing Machine

Meeting daily household needs

How to maintain the machine?

More than 2-3 weeks of continuous use or more than half a year of inactivity need to add lubricants

Note: For specific operation, please refer to the operation video on the detail page

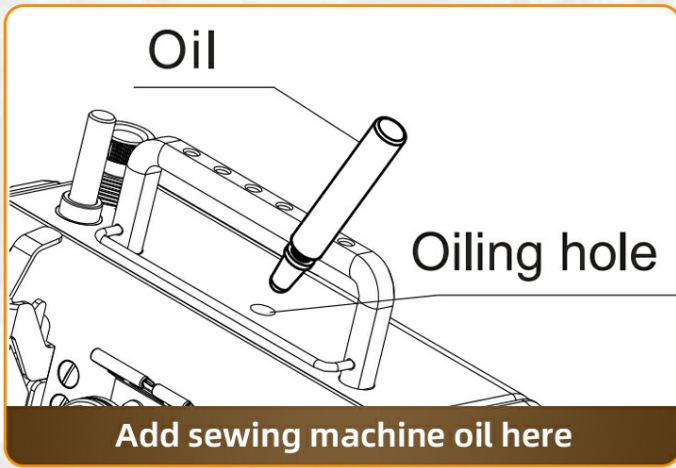


Image: Diagram indicating the specific oiling hole on the serger machine for lubrication.

For specific oiling procedures, refer to the operation video or the detailed instruction manual.

TROUBLESHOOTING

This section provides solutions to common issues you might encounter. For more complex problems, please contact customer support.

- **Skipped Stitches:** Check needle insertion, ensure the needle is not bent or dull, re-thread the machine, and verify thread tension.
- **Thread Breakage:** Inspect for burrs on thread guides or needle plate, ensure correct threading, adjust thread tension, and use high-quality sewing thread.
- **Fabric Puckering/Stretching:** Adjust the differential feed setting and presser foot pressure according to fabric type.
- **Machine Not Starting:** Ensure the power cord is securely plugged in, the power switch is on, and the foot controller is properly connected.

SPECIFICATIONS

Feature	Detail
Model Number	BFJ0000002
Product Dimensions	11 x 10 x 10 inches (11"D x 10"W x 10"H)
Item Weight	17.63 pounds
Stitch Capability	3-thread, 4-thread
Stitch Patterns	Up to 12 patterns
Max. Sewing Speed	1250 stitches per minute
Frame Material	Heavy-Duty Industrial Metal Frame (High strength aluminium alloy)
Lighting	LED Light
Color	White

Manufacture Year

2025

INCLUDED ACCESSORIES

Your MARGAR Pro Serger Sewing Machine comes with a comprehensive accessory kit to support your sewing projects and maintenance needs.

Complete Accessories Included

Avoid secondary purchases



Spool holderx4



Lower knife



Sprung



Brush



Tweezers



Foot controller



Spanner



Thread guide scre



Needle set (size 16) #3



Large hexagon wrench (4mm)



Small flathead screwdriver



Upper knife



Small hexagon wrench*5
(1.5mm, 2mm, 2.5mm, 3mm)



Needle plate for three-
thread rolled hem

Image: A visual display of all accessories included with the serger machine, such as spool holders, lower knife, sprung, brush, tweezers, foot controller, spanner, thread guide screw, needle set, large hexagon wrench, small flathead screwdriver, upper knife, small hexagon wrench set, and needle plate for three-thread rolled hem.

- Spool holders (x4)
- Lower knife
- Sprung
- Brush
- Tweezers

- Foot controller
- Spanner
- Thread guide screw
- Needle set (size 16) #3
- Large hexagon wrench (4mm)
- Small flathead screwdriver
- Upper knife
- Small hexagon wrench set (1.5mm, 2mm, 2.5mm, 3mm)
- Needle plate for three-thread rolled hem

WARRANTY AND SUPPORT

MARGAR is committed to providing high-quality products and excellent customer service. All products undergo strict inspection before shipment.

- **Customer Support:** If you encounter any issues with your serger sewing machine, please contact us. We aim to assist you in solving problems within 12 hours.
- **Quality Assurance:** In case of any quality problems, we will compensate for your loss or replace the product with a new one.
- **Technical Support:** Lifetime technical support is available.

For further assistance, please refer to the contact information provided with your purchase or on the official MARGAR website.

