

ATEN UC232BF

ATEN UC232BF USB to RJ-45 (RS-232) Console Adapter Instruction Manual

1. INTRODUCTION AND OVERVIEW

The ATEN UC232BF is a USB to RJ-45 (RS-232) Console Adapter designed to provide a reliable serial connection for various networking and industrial applications. This adapter converts a standard USB port into an RJ-45 console port, enabling communication with devices such as routers, modems, and network switches without the need for a rolled RJ45 cable.

Key features include fast COM port transmission up to 921.6 Kbps, plug-and-play functionality, and a compact design for portability. It also offers proven anti-electromagnetic interference (anti-EMI) capability for stable data transmission.

2. PACKAGE CONTENTS

Please verify that all components are present in your package:

- 1 x ATEN UC232BF USB to RJ-45 (RS-232) Console Adapter
- 1 x User Instructions

3. FEATURES

- **USB to RJ-45 (RS-232) Conversion:** Converts a USB port to an RJ-45 Console port, facilitating serial communication.
- **Straight RJ45 Cable Support:** Eliminates the need for a rolled RJ45 cable when connecting to networking devices.
- **High Data Transfer Rate:** Achieves up to 921.6 Kbps for efficient communication.
- **Plug-and-Play:** Simple installation and operation, ideal for mobile use.
- **Anti-EMI Performance:** Ensures stable transmission performance in various environments.

Broadly Compatible with Serial Devices via RJ-45 Connectivity

The UC232BF allows your PC or laptop to control and communicate with various serial devices directly via RJ-45 cable, such as modem, network switch, router, barcode scanner, etc.



Image: Internal cable structure highlighting insulation, anti-EMI, flame resistance, fast transmission, and reinforced cable features.

4. SETUP AND INSTALLATION

The ATEN UC232BF adapter is designed for plug-and-play installation, requiring minimal setup. Drivers may be automatically installed by your operating system. If not, please refer to the ATEN website for the latest driver downloads.

1. Connect the USB Type-A connector of the UC232BF adapter to an available USB port on your computer (laptop or PC).
2. Connect the RJ-45 end of the adapter to the console port of your networking device (e.g., router, switch, modem) using a standard straight RJ45 cable.
3. The operating system should detect the new hardware and install the necessary drivers.
4. Verify the installation by checking your device manager for the newly installed COM port.

Multi-System Support

The UC232BF is compatible with multiple operating systems, such as macOS, Linux, Windows 7/8/10/11, and legacy Windows Vista/2000/XP/98 versions.

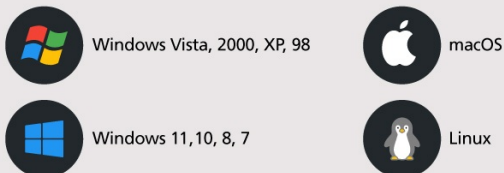


Image: Connection diagram illustrating how to connect the USB to RJ-45 adapter to a router or a DB-9 serial device.

5. OPERATING INSTRUCTIONS

Once the ATEN UC232BF adapter is successfully installed, it functions as a standard serial COM port on your computer. You can use any terminal emulation software (e.g., PuTTY, Tera Term, SecureCRT) to communicate with your connected serial device.

1. Open your preferred terminal emulation software.
2. Configure the software to use the COM port assigned to the UC232BF adapter.
3. Set the serial communication parameters (baud rate, data bits, parity, stop bits, flow control) to match the requirements of your connected device. The adapter supports data transfer rates up to 921.6 Kbps.
4. Establish the connection and begin communicating with your serial device.

6. COMPATIBILITY

The ATEN UC232BF is broadly compatible with various operating systems and serial devices:

Operating System Support:

- macOS
- Linux
- Windows 7/8/10/11
- Legacy Windows Vista/2000/XP/98

Compatible Devices:

This adapter allows your PC or laptop to control and communicate with various serial devices directly via an RJ-45 cable, including:

- Modems
- Network Switches
- Routers
- Barcode Scanners
- Other serial devices requiring RJ-45 connectivity



Image: Multi-system support for Windows, macOS, and Linux, demonstrating the adapter's broad compatibility.

Stable Performance, Fast Transmission

The UC232BF offers USB 2.0 connectivity and is equipped with a robust cable that ensures proven anti-EMI performance for reliable signal transmission at speeds of up to 921.6 Kbps baud rate.

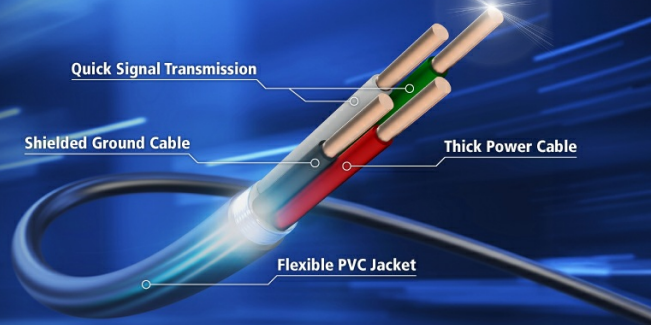


Image: Broad compatibility with serial devices via RJ-45 connectivity, including laptops, PCs, routers, network switches, modems, and barcode scanners.

7. SPECIFICATIONS

Feature	Specification
Brand	ATEN
Model Name	UC232BF
Connector Type	USB Type A (Male) to RJ-45 (Male)
Cable Type	Serial
Data Transfer Rate	Up to 921.6 Kbps
Cable Length	1.2 meters
USB Standard	USB 2.0
Special Feature	High Speed, Anti-EMI
Recommended Uses	Networking appliance configuration and management
Color	Black
Item Weight	2.08 ounces
Outer Material	Plastic

Applications

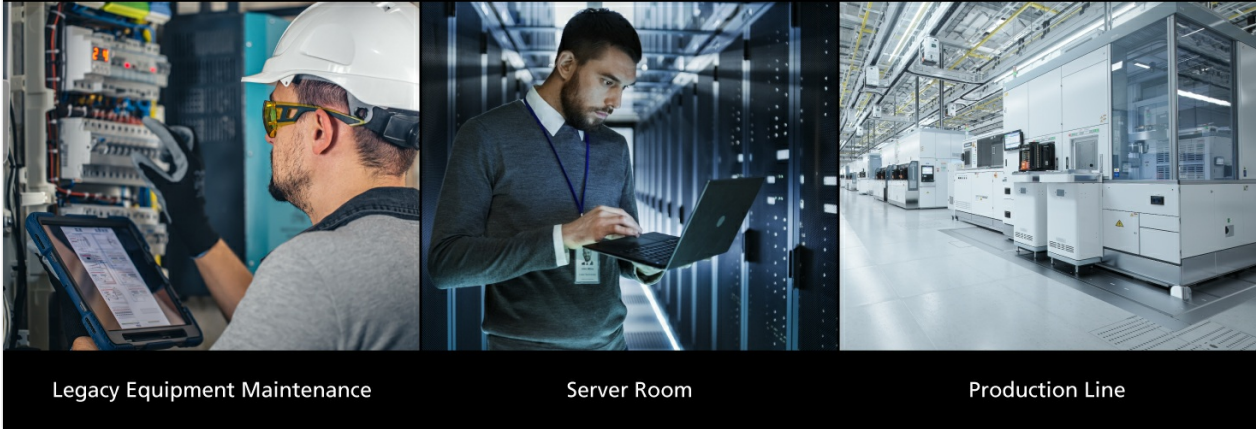


Image: Comparison table detailing specifications across different ATEN USB to RS-232 adapter models, highlighting the UC232BF's RJ-45 output and 1.2m cable length.

8. TROUBLESHOOTING

If you encounter issues with your ATEN UC232BF adapter, consider the following troubleshooting steps:

- **Driver Installation:** Ensure the correct drivers are installed. Check your operating system's device manager for any unknown devices or errors related to the COM port. If necessary, download and install the latest drivers from the ATEN official website.
- **Cable Connection:** Verify that both the USB and RJ-45 connections are secure. Try using a different USB port on your computer.
- **Serial Port Settings:** Double-check that the serial communication parameters (baud rate, data bits, parity, stop bits, flow control) in your terminal emulation software match those required by the connected serial device.
- **Device Compatibility:** Confirm that your target serial device is compatible with RS-232 communication via RJ-45.
- **Adapter Functionality:** If possible, test the adapter with another known working serial device or computer to isolate the issue.

9. MAINTENANCE

The ATEN UC232BF USB to RJ-45 (RS-232) Console Adapter requires minimal maintenance to ensure its longevity and optimal performance:

- **Cleaning:** Keep the adapter and its connectors clean and free from dust and debris. Use a soft, dry cloth for cleaning. Avoid liquid cleaners.
- **Storage:** Store the adapter in a cool, dry place when not in use. Avoid extreme temperatures and direct sunlight.
- **Handling:** Handle the adapter with care. Avoid bending or twisting the cable excessively, especially near the connectors, to prevent internal damage.
- **Firmware/Driver Updates:** Periodically check the ATEN official website for any available firmware or driver updates to ensure compatibility and performance improvements.

10. WARRANTY AND SUPPORT

The ATEN UC232BF USB to RJ-45 (RS-232) Console Adapter comes with a **3 Year Hardware Warranty**. For warranty claims, technical support, or further assistance, please contact ATEN customer service or visit their official website for detailed support information.

Official Product Video:

Your browser does not support the video tag.

Video: An official ATEN video providing an overview of the ATEN USB Console Adapter, demonstrating its features and applications.