

PPOLB JC35M3

PPOLB Electric Chair Lift (Model JC35M3) Instruction Manual

Your Guide to Safe and Effortless Mobility

1. INTRODUCTION

Thank you for choosing the PPOLB Electric Chair Lift, Model JC35M3. This device is designed to provide safe and independent assistance for individuals experiencing mobility challenges, particularly for rising from the floor or bathtub. Its robust, waterproof, and portable design ensures reliable performance in various settings. Please read this manual thoroughly before initial use to ensure proper operation and safety.



Figure 1.1: The PPOLB Electric Chair Lift assists users in rising from the floor or bathtub, enhancing independence.

2. SAFETY INFORMATION

Your safety is paramount. Adhere to all instructions and warnings to prevent injury or damage to the device.

- **Weight Capacity:** Do not exceed the maximum weight capacity of 308 lbs (140 kg).
- **Waterproof Rating:** The device is IPX8 waterproof, suitable for use in bathtubs and showers. Ensure the remote control connection is secure before exposing to water.
- **Stable Placement:** Always ensure the lift is placed on a flat, stable surface. The 6 heavy-duty suction cups must be firmly attached to the surface (tile, marble, hardwood) before use.

- **Remote Control:** Use only the provided remote control for operation. Familiarize yourself with the 'Lift', 'Lower', and 'Emergency Stop' buttons.
- **Charging:** Charge the remote control unit in a dry area. Do not use the lift while it is charging.
- **Supervision:** While designed for independent use, supervision is recommended for individuals with severe cognitive impairments or those new to the device.
- **Maintenance:** Regularly inspect the lift for any signs of wear or damage. Do not use if any part is compromised.

Lifesaving Emergency Aid

L i f t w i t h E a s e



Figure 2.1: The lift features a stable and secure design with heavy-duty construction and powerful suction cups.

3. PRODUCT OVERVIEW

The PPOLB Electric Chair Lift is engineered for ease of use and durability. Key features include:

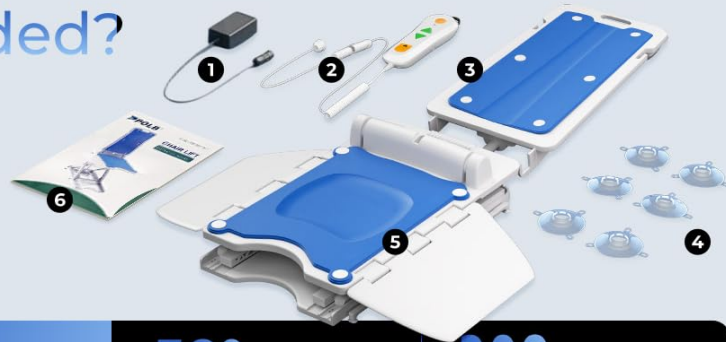
- **Foldable Design:** For easy storage and portability.
- **Wireless Rechargeable Remote:** Intuitive control with real-time battery status.
- **Padded Seat and Backrest:** Thick, waterproof padding for comfort and support.
- **Adjustable Height:** Lifts from 2.3 inches to 18.9 inches.
- **Automatic Backrest Tilt:** Tilts from 140° to 93° during ascent for ergonomic support.
- **Side Wings:** Facilitate easy transfer on and off the seat.
- **Suction Cups:** 6 heavy-duty suction cups for enhanced stability.

Components:

- 1. Charger
- 2. Controller (Remote)
- 3. Backrest
- 4. Suction Cups (6 included)
- 5. Base
- 6. Instruction Manual

What's Included?

- 1 Charger
- 2 Controller
- 3 Backrest
- 4 Suction cups
- 5 Base
- 6 Instruction manual



Product Specification

50° Backrest Angle Adjustment

308LBS Lifting Capacity

Figure 3.1: All components included with your PPOLB Electric Chair Lift.

4. SETUP

The PPOLB Electric Chair Lift is designed for quick and easy assembly.

1. **Unpack:** Carefully remove all components from the packaging.
2. **Attach Backrest:** Align the backrest hook with the guide bar on the base. Gently press until it clicks securely into place. No tools are required.
3. **Connect Remote:** Ensure the remote control cable is securely connected to the main unit.
4. **Positioning:** Place the lift on a flat, non-slip surface. Press down firmly on the seat to engage the 6 suction cups, ensuring maximum stability.

Assemble in 3 Minutes

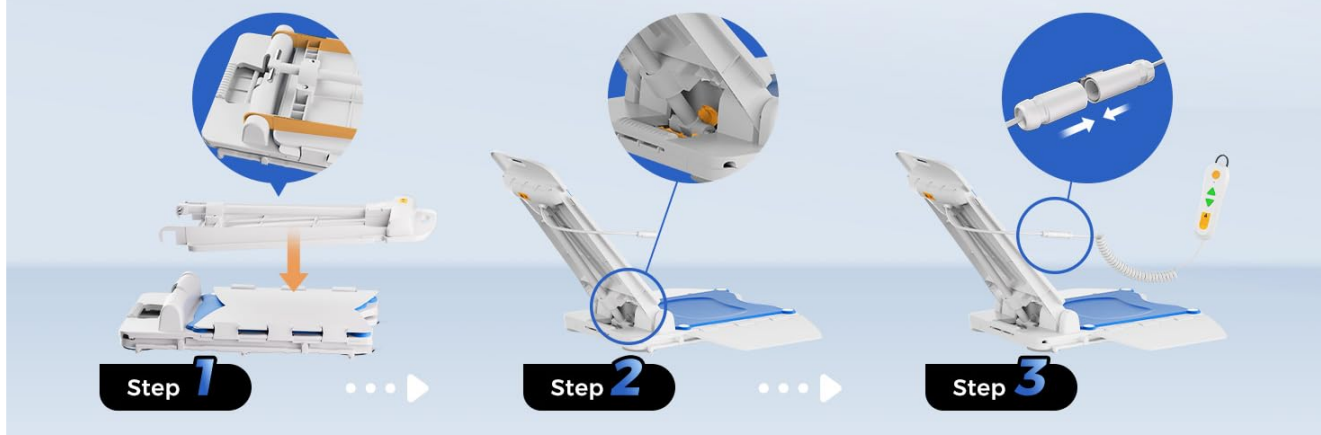


Figure 4.1: Simple 3-minute assembly process.

Setup Demonstration Video:

Video 4.1: This video demonstrates the quick assembly and initial setup of the PPOLB Electric Chair Lift, including how to attach the backrest and connect the remote control.

5. OPERATING INSTRUCTIONS

Operating the PPOLB Electric Chair Lift is straightforward with its user-friendly remote control.

Remote Control Functions:

- **Green Up Arrow:** Press and hold to raise the seat.
- **Green Down Arrow:** Press and hold to lower the seat.
- **Red Stop Button:** Press to immediately halt any movement. Releasing the up/down button also stops movement.
- **Battery Indicator:** Lights on the remote show the current battery level.

Elderly-friendly Design

Convenient one-button lift and wireless design



Figure 5.1: The intuitive remote control for easy operation.

Using the Lift:

1. **Positioning:** Ensure the lift is stable and the suction cups are engaged.
2. **Transferring On:** With the lift in its lowest position (2.3 inches), carefully slide onto the seat. The side wings provide additional surface area for easier transfer.
3. **Lifting:** Press and hold the green up arrow on the remote. The seat will smoothly rise, and the backrest will automatically adjust its tilt (from 140° to 93°) to maintain ergonomic support and prevent slipping.
4. **Transferring Off:** Once the desired height is reached (up to 18.9 inches), release the button. The side wings will assist in transferring to a standing position or another surface.
5. **Lowering:** To lower the seat, press and hold the green down arrow.



Figure 5.2: The lift's ergonomic design ensures comfort and safety during operation.

Operation Demonstration Video:

Video 5.1: This video provides a comprehensive demonstration of the PPOLB Electric Chair Lift in action, showcasing its smooth lifting and lowering functions.

6. MAINTENANCE

Proper maintenance ensures the longevity and optimal performance of your electric chair lift.

Cleaning:

Due to its IPX8 waterproof rating, the lift can be easily cleaned. Use a mild soap and water solution with a soft cloth. Rinse thoroughly and allow to air dry. Do not use abrasive cleaners or solvents.

Versatile 2-In-1 Functionality



IP68

18.9"

↑ ↓

2.36"



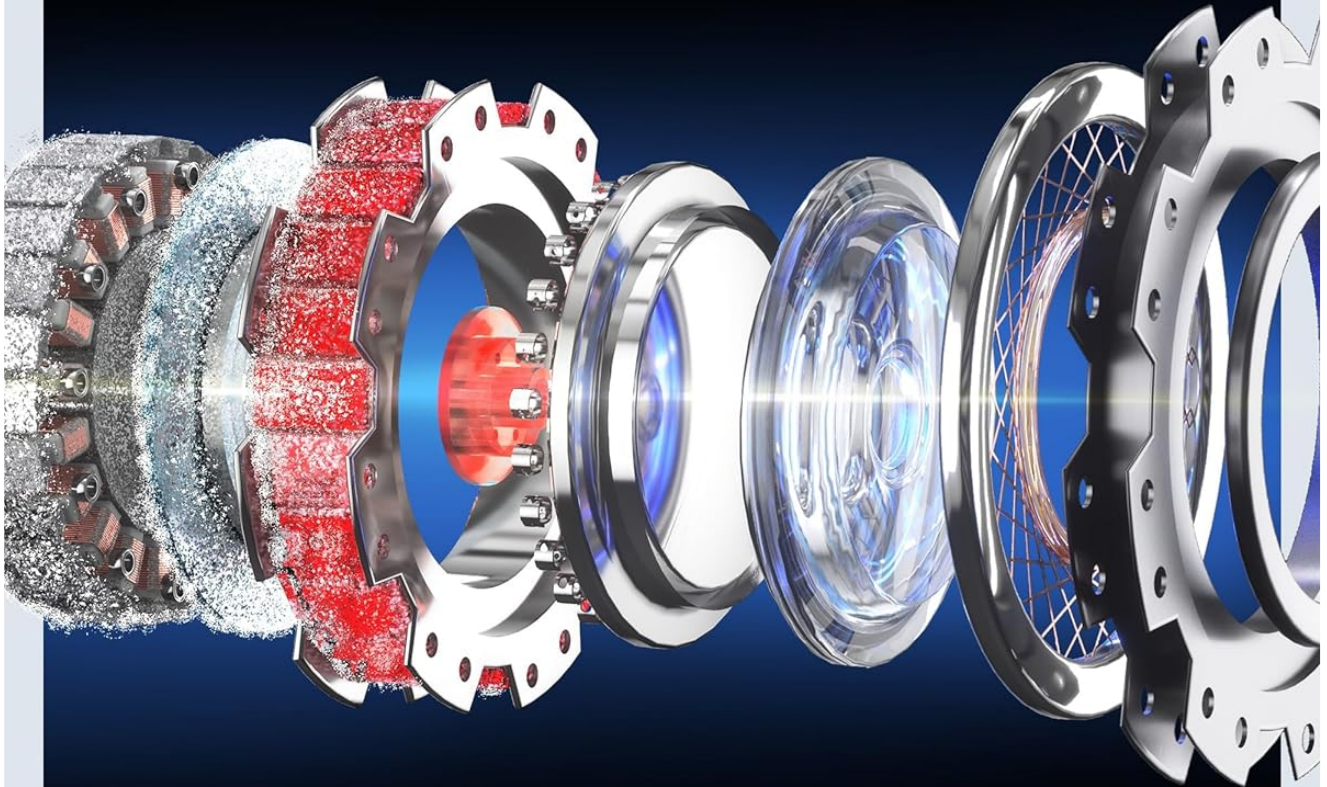
Figure 6.1: The IPX8 waterproof design allows for easy cleaning and use in wet environments.

Charging:

The remote control houses the rechargeable battery. Connect the charger to the remote control and plug it into a standard electrical outlet. A full charge takes approximately 2.5 hours and provides over 50 lift cycles. The battery indicator lights on the remote will show charging status.

Powerful Waterproof Motor

Battery tech that lasts for years



10x
Cycle
Performance

2.5H
Charge

50+
Lifts

Figure 6.2: Efficient charging provides extended use.

Storage:

The lift features a foldable design for compact storage. Fold the backrest down and collapse the unit. Use the integrated carry handle for easy transport. The remote control can be conveniently stored using the side hooks on the backrest.

Stable Suction Support

Suitable for common household surfaces

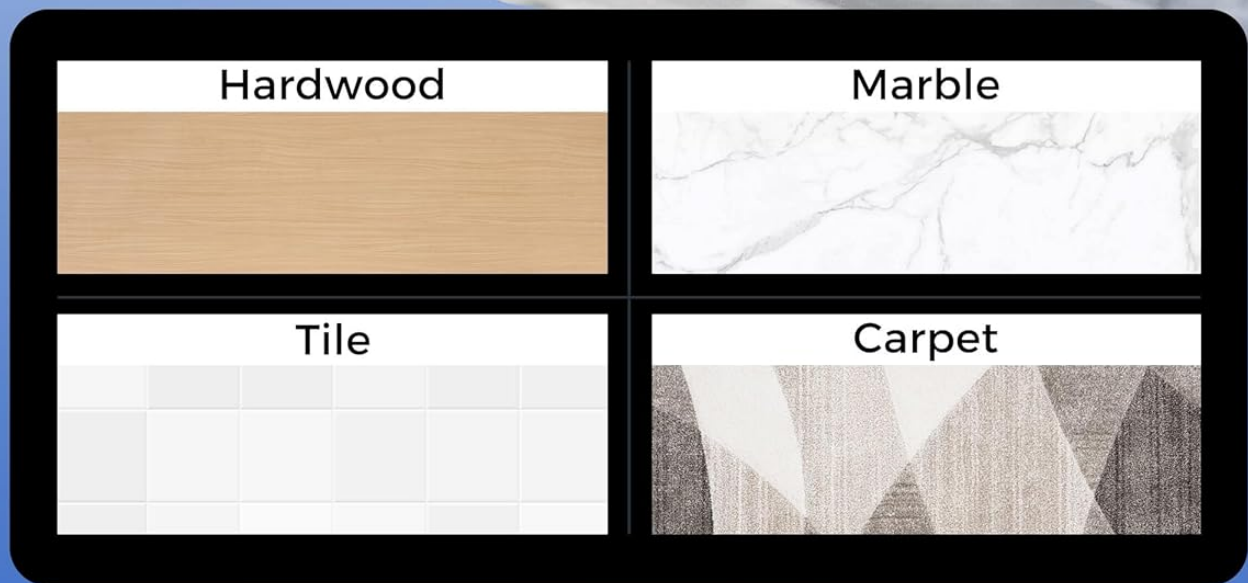
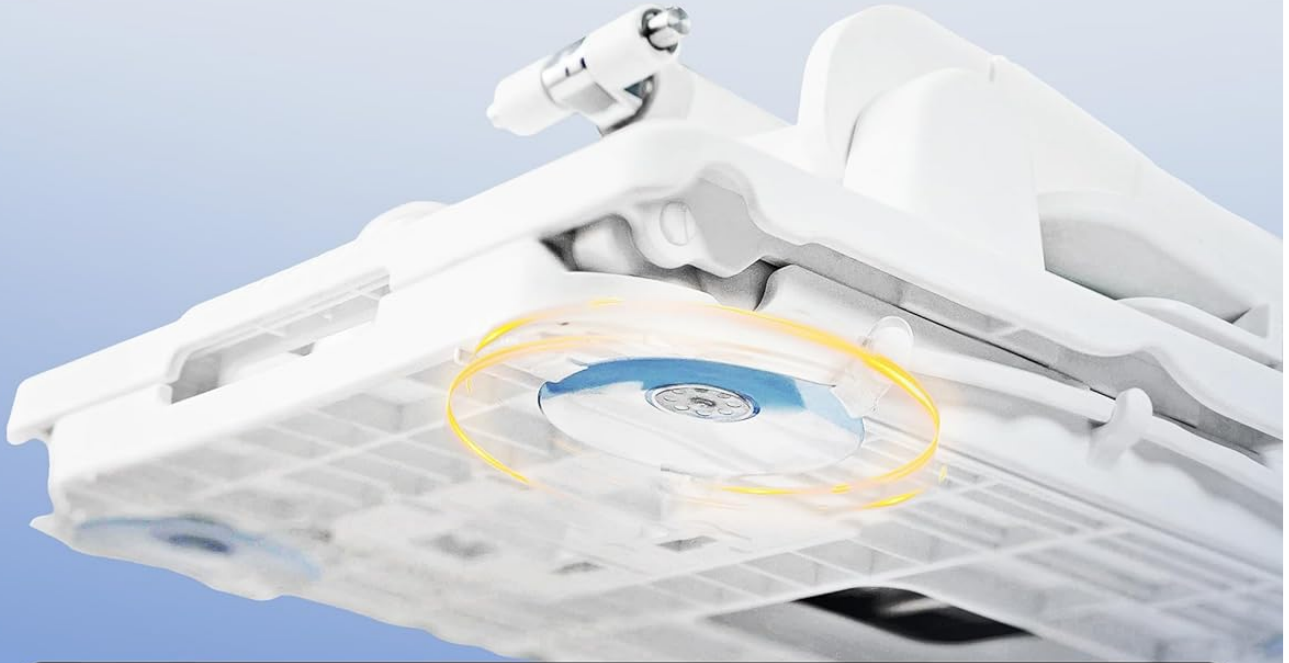


Figure 6.3: Foldable design for convenient storage and portability.

7. TROUBLESHOOTING

If you encounter any issues with your PPOLB Electric Chair Lift, refer to the following common solutions:

- **Lift Not Responding:**
 - Check if the remote control is charged.
 - Ensure the remote control cable is securely connected to the main unit.

- Verify that the emergency stop button is not engaged.

- **Unstable Operation:**

- Ensure all 6 suction cups are firmly attached to a clean, dry, flat surface.
- Check for any obstructions beneath the lift.

- **Unusual Noises:**

- Stop operation immediately.
- Inspect the lift for any loose parts or foreign objects.
- If the noise persists, discontinue use and contact customer service.

For issues not covered here, please contact PPOLB Customer Service.

8. SPECIFICATIONS

Feature	Detail
Brand	PPOLB
Model Number	JC35M3
Material	Plastic
Color	Blue
Product Dimensions (D x W x H)	25"D x 16"W x 20"H
Maximum Weight Recommendation	308 Pounds
Minimum Height	2.3 Inches
Maximum Lifting Height	18.9 Inches
Backrest Angle Adjustment	140° to 93°
Waterproof Rating	IPX8
Charge Time	Approx. 2.5 hours
Lifts Per Charge	Over 50 cycles
Item Weight	Approx. 23 lbs

9. WARRANTY & SUPPORT

The PPOLB Electric Chair Lift (Model JC35M3) comes with a **3-year manufacturer's warranty** from the date of purchase. This warranty covers defects in materials and workmanship under normal use.

For warranty claims, technical support, or any questions regarding assembly or product selection, please contact our customer service team. Keep your purchase receipt as proof of purchase.

Customer Service: Refer to the contact information provided on your product packaging or the official PPOLB website.

