

[Manuals.plus](#) /

› [Rimoody](#) /

› Rimoody Single Din Wireless Carplay Car Stereo User Manual

Rimoody 6180C

Rimoody Single Din Wireless Carplay Car Stereo User Manual

Model: 6180C

PRODUCT OVERVIEW

The Rimoody Single Din Wireless Carplay Car Stereo is a versatile in-car entertainment and communication system designed to enhance your driving experience. Featuring a 5.9-inch touch screen, it integrates seamlessly with your smartphone via Wireless Carplay and Android Auto, offering access to navigation, music, calls, and more. It also supports Mirror Link, Bluetooth connectivity, FM radio, and includes multi-function USB and Type-C ports for charging and media playback. A rear view camera is included for enhanced safety during reversing.



Figure 1: Rimoody Single Din Car Stereo with included backup camera, microphone, and Carplay/Android Auto icons.

PACKAGE CONTENTS

Upon opening the package, verify that all components are present:

- Single Din Car Stereo Unit (Model 6180C)
- Rear View Camera
- Power Cable
- Horn Cable
- Mounting Bracket
- D-BUS Cable
- User Manual
- Microphone
- Remote Control
- Steering Wheel Control

Product WIRING SIZE & LIST

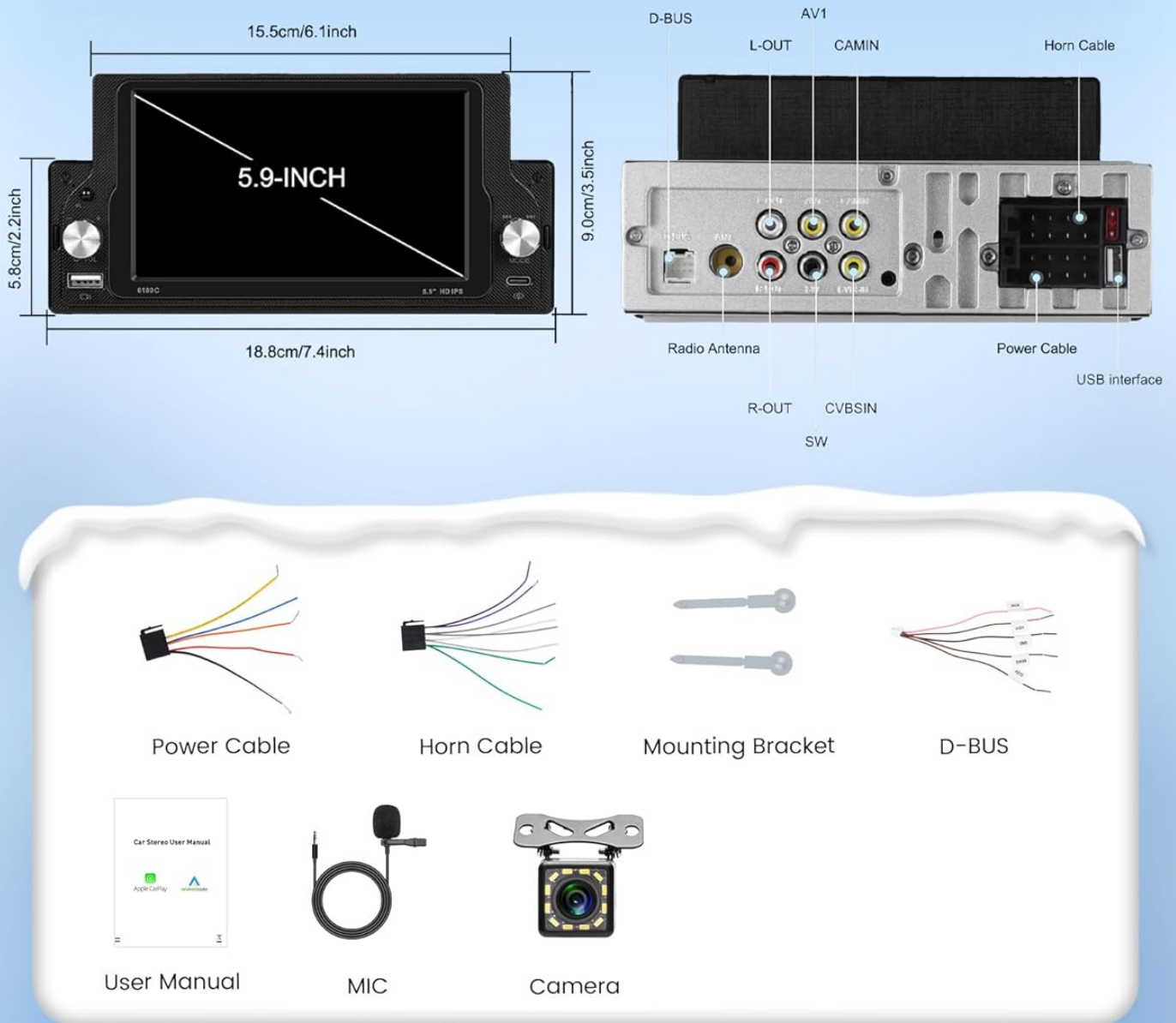


Figure 2: Product dimensions, wiring diagram, and a list of included accessories such as power cables, mounting brackets, user manual, microphone, camera, steering wheel control, and remote control.

SETUP AND INSTALLATION

Proper installation is crucial for optimal performance. It is recommended to have this unit installed by a professional if you are unfamiliar with car audio wiring.

1. Pre-Installation Checks

- Ensure your vehicle has a single DIN slot (178x50mm).

- Disconnect the vehicle's battery before starting any wiring.
- Identify your vehicle's wiring harness for power, ground, speaker outputs, and accessory power.

2. Wiring Connections

Refer to the wiring diagram provided in Figure 2 and the included user manual for detailed pin assignments. Key connections include:

- **Power Cable:** Connect to constant 12V, accessory 12V, and ground.
- **Horn Cable:** For speaker outputs.
- **Rear View Camera:** Connect the camera's video output to the "CAMIN" input on the stereo and its power to the reverse light circuit.
- **Steering Wheel Control (SWC):** Connect SWC wires to your vehicle's steering wheel control interface (if applicable).
- **USB/Type-C Ports:** For media playback and charging.
- **Audio Outputs (L-OUT, R-OUT):** For connecting external amplifiers.

3. Mounting the Unit

Use the provided mounting bracket to secure the stereo firmly into the single DIN slot of your vehicle's dashboard.

OPERATING INSTRUCTIONS

1. Basic Operation

- **Power On/Off:** Press the power button (usually the volume knob) to turn the unit on or off.
- **Volume Control:** Rotate the volume knob to adjust audio levels.
- **Screen Flip:** The 5.9-inch screen supports a 95° flip-out mechanism for optimal viewing angle.
- **Backlight Colors:** Customize the seven-color backlight in the setup menu.

2. Wireless Carplay & Android Auto

This feature allows seamless integration with your smartphone for navigation, music, calls, and more. (Note: Not applicable to Huawei brand phones).

1. Ensure Bluetooth and Wi-Fi are enabled on your smartphone.
2. On the car stereo, select the Carplay or Android Auto icon.
3. Follow the on-screen prompts to pair your phone.
4. Once connected, your phone's compatible apps will be displayed on the stereo screen.

IOS & Android CARPLAY ANDROID AUTO



Figure 3: Demonstration of Wireless Carplay and Android Auto functionality, showing smartphone interfaces mirrored on the car stereo display.

3. Mirror Link

Mirror Link allows you to display your smartphone's screen directly onto the car stereo via a USB cable.

1. Connect your iPhone or Android phone to the stereo using its original USB cable.
2. Select the "Mirror Link" option on the stereo.
3. Follow any prompts on your phone to allow screen mirroring.

Note: Some phone versions may require software updates for full compatibility.

IOS & Android

MIRROR LINK



For IOS

✓ USB Cable



For Android

✓ USB Cable



Figure 4: Visual representation of Mirror Link feature, enabling screen mirroring from both iOS and Android smartphones to the car stereo via USB cable.

4. Bluetooth Connectivity

Connect your phone via Bluetooth for hands-free calling and music playback.

1. Go to the Bluetooth menu on the stereo.
2. Enable Bluetooth on your phone and search for available devices.
3. Select "Rimood" (or similar device name) from the list and pair.
4. Once connected, you can make/receive calls and stream audio.

5. FM Radio

Access your favorite radio stations with high-quality stereo sound.

- **Auto Scan:** Automatically scan and save available stations.
- **Manual Tuning:** Manually tune to specific frequencies.
- **Presets:** Save up to 18 radio presets for quick access.

6. EQ Settings

Adjust the audio equalizer settings to customize your sound experience.

- Access the EQ menu to select preset sound modes (e.g., Jazz, Classic, Pop, Rock) or create a custom profile.



Figure 5: User interfaces for Bluetooth phone calls, FM radio tuning with frequency display, and graphic equalizer (EQ) settings for audio customization.

7. USB & Type-C Ports

These ports support various media formats for music, videos, and photos, and can also be used for charging your devices.

Support **DVR** (EXCLUDING) **USB / TYPE C**

 **USB Charge**

 **Type C Charge**



Figure 6: Close-up view of the multi-function USB and Type-C ports on the car stereo, highlighting their capability for both data transfer and device charging.

8. Rear View Camera & SWC

The included rear view camera provides a clear view when reversing. Steering Wheel Control (SWC) allows for convenient operation.

- **Rear View Camera:** When the vehicle is shifted into reverse, the stereo screen will automatically display the camera feed (AHD 720P supported).
- **Steering Wheel Control:** Program your steering wheel buttons to control stereo functions like volume, track skip, and mode selection.

- **Driving Recorder (DVR):** The unit supports an external driving recorder (not included). Playback can be viewed on the stereo screen.



Figure 7: Illustration of the high-definition reversing camera view displayed on the car stereo, alongside the on-screen interface for steering wheel control settings.

MAINTENANCE

To ensure the longevity and optimal performance of your Rimoody car stereo, follow these maintenance guidelines:

- **Cleaning the Screen:** Use a soft, lint-free cloth to gently wipe the touch screen. Avoid abrasive cleaners or solvents.

- **Dust Removal:** Periodically clean dust from the unit's vents and ports using compressed air or a soft brush.
- **Software Updates:** Check the manufacturer's website for any available firmware updates to ensure the best performance and compatibility.
- **Cable Connections:** Ensure all cables are securely connected and free from damage.

TROUBLESHOOTING

If you encounter issues with your car stereo, refer to the following common problems and solutions:

Problem	Possible Cause	Solution
No Power	Loose power connection, blown fuse, incorrect wiring.	Check power cables and fuses. Ensure correct wiring according to the manual.
No Sound	Volume too low, mute activated, speaker wiring issues, incorrect audio source.	Increase volume. Check mute setting. Verify speaker connections. Select correct audio source.
Carplay/Android Auto Not Connecting	Bluetooth/Wi-Fi off, phone not compatible (Huawei), incorrect pairing, software issue.	Ensure Bluetooth/Wi-Fi are on. Re-pair device. Check phone compatibility. Update stereo firmware if available.
Mirror Link Not Working	Incorrect USB cable, phone settings, phone software version.	Use original USB cable. Check phone's USB debugging/mirroring settings. Update phone software.
Rear Camera No Display	Camera not powered, video cable loose, incorrect input selected.	Check camera power and video cable connection to "CAMIN". Ensure vehicle is in reverse.

If the problem persists, please contact Rimoodly customer support.

SPECIFICATIONS

Feature	Detail
Model	6180C
Screen Size	5.9 inches (15 cm visible diagonal)
Installation Size	178 x 50 mm (Single DIN)
Connectivity	Wireless Carplay, Wireless Android Auto, Bluetooth, Mirror Link (USB), USB, Type-C, Aux-in
Radio	FM Radio (18 presets)
Audio Output Mode	Stereo
Special Features	Touchscreen, 95° Flip-out Screen, Seven-color Backlight, EQ, SWC Support, AHD 720P Camera Input
Included Accessories	Backup Camera, Microphone, Power Cable, Horn Cable, Mounting Bracket, D-BUS Cable, User Manual
Item Weight	1.65 pounds
Package Dimensions	8.31 x 4.65 x 0.47 inches
Manufacturer	Rimoodly

Feature	Detail
Country of Origin	China

WARRANTY AND SUPPORT

Rimoody offers comprehensive support for its products:

- **Money-Back Guarantee:** 30-day money-back policy.
- **Replacement Warranty:** 12-month replacement warranty.
- **Technical Support:** Lifetime technical support.
- **Returns:** 90 days free return for refund or exchange.
- **Customer Service:** Quick response within 24 hours.

For any installation or usage queries, please contact Rimoody customer service via email. Professional installation guides and videos may also be available.



Figure 8: Summary of Rimoody's customer support, including 24-hour response, professional installation guidance, 90-day free returns, and lifetime technical support.

