

## uaue T70-AI

# uaue T70-AI Smart Watch User Manual

Model: T70-AI | Brand: uaue

## 1. INTRODUCTION

This manual provides detailed instructions for the setup, operation, and maintenance of your uaue T70-AI Smart Watch. This device integrates advanced health monitoring, comprehensive fitness tracking, and an AI ChatGPT assistant to enhance your daily life. Please read this manual thoroughly to ensure proper use and to maximize the benefits of your smartwatch.

## 2. WHAT'S IN THE BOX

- uaue T70-AI Smartwatch
- Magnetic Charging Cable
- User Manual

## 3. SETUP

### 3.1 Charging the Smartwatch

Before initial use, fully charge your smartwatch. Connect the magnetic charging cable to the charging points on the back of the watch and to a USB power source. A full charge typically takes approximately 2 hours. The watch can last up to 7 days with regular use or 30 days on standby.

### 3.2 App Installation and Pairing

1. Download the 'GloryFit' app from your smartphone's app store (available for Android and iOS).
2. Open the 'GloryFit' app and create an account or log in.
3. Ensure Bluetooth is enabled on your smartphone.
4. In the app, navigate to 'Device' and select 'Add Device'.
5. Select 'T70-AI' from the list of available devices to pair. Follow any on-screen prompts on both your phone and watch to complete the pairing process.

For AI features to function, the 'GloryFit' app must remain active on your phone and the smartwatch must be paired via Bluetooth.

## 4. OPERATING INSTRUCTIONS

### 4.1 Basic Navigation

The smartwatch features a 1.91-inch TFT HD touch display. Swipe left, right, up, or down to navigate through menus and functions. Press the side button to return to the home screen or wake the device.

### 4.2 Bluetooth Calling

With the built-in speaker and microphone, you can manage calls directly from your wrist:

- **Answer/Reject Calls:** When an incoming call is received, tap the green icon to answer or the red icon to reject.
- **Dial Calls:** Access the dial pad on the watch to make calls.
- **Contacts/Call History:** Sync your contacts and view recent call history through the 'GloryFit' app.



Image: Bluetooth Calling and Smart Notifications. This image illustrates the smartwatch's capability to handle incoming calls, display call history, and show notifications from various social media applications like Twitter, WhatsApp, and Instagram.

## 4.3 AI ChatGPT Assistant

The integrated ChatGPT AI assistant provides instant answers and support:

- **Access:** Navigate to the ChatGPT icon on your watch.
- **Interaction:** Use voice or text input to ask questions, request translations, or seek information.
- **Functionality:** The AI can provide information on diet, nutrition, horoscopes, and more.

Your browser does not support the video tag.

Video: uau AI Smart Watch with ChatGPT. This video demonstrates the AI capabilities of the smartwatch, including voice-activated watch face generation, Bluetooth calling, and interaction with ChatGPT for various queries.

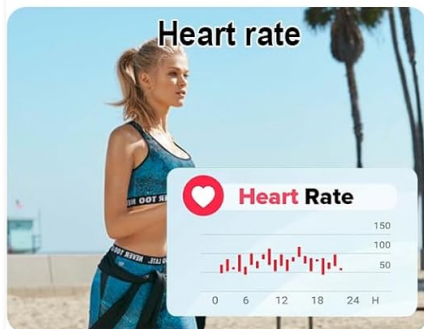
## 4.4 Health Monitoring

The smartwatch continuously tracks key health metrics:

- **Heart Rate:** Monitors your heart rate throughout the day.
- **Blood Oxygen (SpO2):** Measures blood oxygen levels.
- **Sleep Quality:** Tracks light, deep, and REM sleep stages.
- **Menstrual Cycle:** Provides tracking for women's health.
- **AI-Generated Reports:** The 'GloryFit' app analyzes your data and offers personalized wellness suggestions.

## All-Day Health Tracking and AI Health Analysis

Smart watch can generate exclusive health reports and recommendations through AI intelligent analysis of health data.



**Please click "Begin Analysis" or use the app to view health reports**

**Begin Analysis**

**Health Data Analysis**

10:47

**Steps**

You took 1,535 steps today, which is lower than the recommended daily average of 10,000 steps for maintaining good health. Increasing your step count may promote cardiovascular health and overall fitness.

**Sleep**

Your sleep duration of 5.93 hours is below the recommended 7-9 hours for adults. Insufficient sleep can affect mood, cognitive function, and overall health. Improving sleep quality and duration is vital.

**Heart rate**

Your heart rate data shows a minimum of 99 BPM, which is quite high. Maintaining a healthy resting heart rate is important for cardiovascular fitness. Regular aerobic activity can help lower it.

**Blood oxygen**

Blood oxygen levels are within a healthy range (average at 98%). This indicates good respiratory function. Monitoring this can help in assessing lung health and physical fitness.

Overall, there are areas of potential improvement in your health metrics. Increasing physical activity, improving sleep duration, and managing stress are key to enhancing your overall well-being.

**Heart rate**

**Blood oxygen**

**Step**

**Sleep monitoring**

Image: All-Day Health Tracking and AI Health Analysis. This image shows the smartwatch monitoring heart rate, blood oxygen, and sleep, alongside a smartphone displaying a detailed health data analysis report with personalized suggestions.

## 4.5 Activity Tracking (110+ Sports Modes)

Track your workouts with over 110 sports modes:

- **Modes:** Includes walking, running, cycling, basketball, jump rope, hiking, and many more.
- **Metrics:** Records steps, duration, calories burned, heart rate, and distance in real-time.

# Multi Functional Smart Watch

The collage features five distinct scenes showcasing the smartwatch's capabilities. 1. **Alarm clock:** A woman in a white tank top is shown in a morning setting, with the watch displaying 'Alarm 07:00' and control icons. 2. **Music Control:** A woman is listening to music, with the watch showing a 'Music Lost Control' interface with play, skip, and volume controls. 3. **Stopwatch:** A woman is running on a track, with the watch displaying 'Stopwatch 00:24.08' and start/stop buttons. 4. **Camera control:** A couple is embracing, with the watch displaying 'Remote camera' and a camera icon, and a smartphone in the background showing a photo of the couple. 5. **Weather Forecast:** A scene of people camping with a tent, with the watch displaying a weather forecast: '25°C' and '25-30°' with a sun and cloud icon.

Image: 110+ Sports Modes and All Day Activity Tracking. This image highlights the extensive range of sports modes available on the smartwatch, showing a user cycling and the watch displaying activity metrics like calories, steps, and heart rate.

## 4.6 Notifications

Receive real-time notifications directly on your watch:

- **Message Alerts:** SMS, WhatsApp, Facebook, Instagram, Twitter, and more.
- **Visibility:** Notifications are displayed clearly on the 1.91" screen.

## 4.7 Custom Watch Faces

Personalize your smartwatch display:

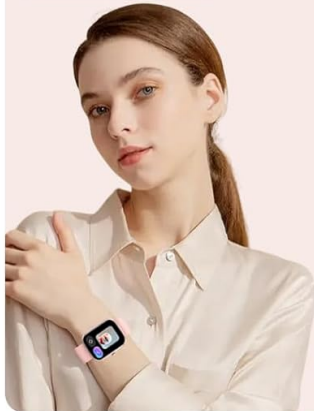
- **App Selection:** Choose from over 100 watch faces via the 'GloryFit' app.
- **AI Creation:** Describe your preferences to the built-in AI to generate unique, personalized watch faces.

## 1.91" HD Touch Screen and AI Smartwatch

### AI Watch Faces

Generate custom watch faces via voice

- Show me a tiger
- Make a Christmas photo
- I want a photo of a cat



Try to say:  
a cute puppy

### AI Agent



### Customized Watch Dial



Image: 1.91" HD Touch Screen and AI Smartwatch. This image showcases the smartwatch's ability to generate custom watch faces using AI voice commands and allows users to customize watch dials with their own photos or choose from over 100 cloud watch faces.

### 4.8 Other Features

- **Music Control:** Control music playback on your paired smartphone.
- **Remote Camera:** Use your watch as a remote shutter for your phone's camera.
- **Weather Forecast:** Get current weather information.
- **Alarm Clock:** Set alarms directly from your wrist.
- **Stopwatch:** Utilize the stopwatch function for timing activities.
- **Sedentary Reminder:** Receive alerts to move after periods of inactivity.

The advertisement features a smartwatch with a pink strap. The top left shows the watch with a battery icon and '89%' charge. The top right lists battery life: 'Long Battery Life', '7 Days Average usage', '30 Days Standby time', and '2 Hours Charge time'. The bottom left highlights 'IP68 Waterproof' with icons for 'Raining', 'Splash', and 'Sweat'. The bottom right shows the watch in water with a detailed screen display including date, time, temperature, and various health metrics.

## Long Battery Life

7 Days Average usage

30 Days Standby time

2 Hours Charge time

# IP68 Waterproof

Raining Splash Sweat

Image: Multi-Functional Smart Watch. This image illustrates several additional features of the smartwatch, such as alarm clock, music control, remote camera operation, weather forecast display, and stopwatch functionality.

## 5. MAINTENANCE

### 5.1 Cleaning

Wipe the watch screen and strap regularly with a soft, dry cloth. For stubborn dirt, a slightly damp cloth can be used, followed by immediate drying.

### 5.2 Water Resistance

The smartwatch has an IP68 waterproof rating, meaning it is resistant to dust and can withstand immersion in water up to 1.5 meters for 30 minutes. It is suitable for sweating and light rain. **Note: It is not suitable for hot showers, saunas, or swimming.** Avoid exposing the watch to hot water or steam, as this can compromise the water resistance.

### 5.3 Battery Care

To prolong battery life, avoid extreme temperatures. Charge the watch using the provided magnetic cable. Do not use damaged cables or chargers.

## 6. TROUBLESHOOTING

- **Watch not turning on:** Ensure the watch is fully charged. Connect it to the charger for at least 10 minutes.
- **Cannot pair with phone:** Make sure Bluetooth is enabled on your phone and the 'GloryFit' app is open. Restart both the watch and phone, then try pairing again.
- **Inaccurate health data:** Ensure the watch is worn snugly on your wrist, not too tight or too loose. Clean the sensors regularly.
- **Notifications not received:** Check app permissions in your phone settings to ensure 'GloryFit' has access to notifications. Verify that notifications are enabled within the 'GloryFit' app.
- **AI ChatGPT not responding:** Confirm the watch is properly connected via Bluetooth to your phone and the 'GloryFit' app is running in the background. Ensure your phone has an active internet connection.

## 7. SPECIFICATIONS

<b>Model Number</b>	T70-AI
<b>Brand</b>	uaue
<b>Screen Size</b>	1.91 Inches
<b>Display Type</b>	TFT HD (320*380 resolution)
<b>Operating System</b>	Android Wear 1.0 (compatible with Android & iOS)
<b>Connectivity</b>	Bluetooth
<b>Battery Capacity</b>	0.3 Amp Hours (approx. 7 days usage, 30 days standby)
<b>Charging Time</b>	Approx. 2 hours
<b>Water Resistance</b>	IP68
<b>Special Features</b>	AI ChatGPT, AI Health Analysis, 110+ Sports Modes, Bluetooth Calling, Heart Rate Monitor, SpO2 Monitor, Sleep Monitor, Custom Watch Faces, Notifications, Music Control, Remote Camera, Weather Forecast, Alarm Clock, Stopwatch, Sedentary Reminder, Step/Calorie/Distance Tracker
<b>Item Weight</b>	3.2 ounces

## 8. WARRANTY AND SUPPORT

For warranty information and customer support, please refer to the documentation included with your purchase or visit the official uaue website. If you encounter any issues not covered in this manual, please contact uaue customer service for assistance.

