

[Manuals.plus](#) /

> [YoTelim](#) /

> YoTelim Love You Bye Wood Sign (Model JJ00486) Instruction Manual

YoTelim JJ00486

YoTelim Love You Bye Wood Sign

Model: JJ00486

Brand: YoTelim

INTRODUCTION

This instruction manual provides essential information for the proper setup, usage, and maintenance of your YoTelim Love You Bye Wood Sign, Model JJ00486. Please read this manual thoroughly before installation to ensure correct application and to maximize the lifespan of your product.



Image: The 'Love You Bye' wood sign, featuring individual black wooden letters and a heart, displayed as wall decor in a contemporary living space.

SETUP INSTRUCTIONS

Follow these steps for proper installation of your wood sign:

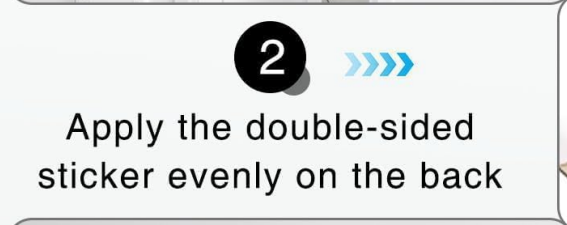
1. **Prepare the Surface:** Select a clean, dry, and smooth wall surface for installation. Ensure the area is free from dust, grease, or moisture.
2. **Apply Adhesive:** Carefully peel the protective film from one side of the provided double-sided adhesive tape. Apply the adhesive evenly to the back of each individual wooden letter and the heart piece.
3. **Position the Sign:** Gently place each wall plaque onto the desired wall location. It is recommended to lightly mark the desired position with a pencil before pressing firmly.
4. **Secure in Place:** Once satisfied with the positioning, press firmly on each piece for several seconds to ensure strong adhesion to the wall.

EASY TO USE



1

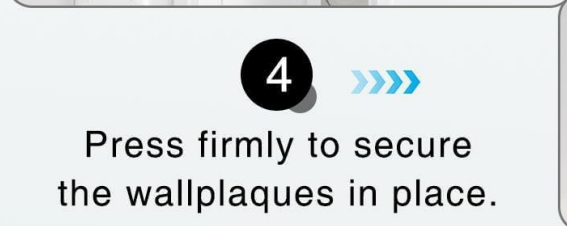
Clean the selected area to ensure it is free of dust



Apply the double-sided sticker evenly on the back



Carefully position each wall plaque on the wall.



Press firmly to secure the wallplaques in place.



Image: A visual guide illustrating the four steps for easy installation: 1. Clean the wall, 2. Apply double-sided sticker, 3. Position each plaque, 4. Press firmly.

OPERATING (USAGE)

The YoTelim Love You Bye Wood Sign is designed for indoor decorative purposes. It serves as a warm and welcoming accent for various spaces within your home.

- **Placement:** Ideal for entryways, hallways, living rooms, bedrooms, or any indoor area where you wish to add a personal touch.
- **Purpose:** The sign conveys a message of affection and can enhance the aesthetic of your home decor.
- **Versatility:** Its modern design and neutral color allow it to complement a wide range of interior styles.



Applicable to Multiple Scenes



Image: A collage showing the 'Love You Bye' sign in different home environments, including a living room above a sofa and an entryway above a console table, demonstrating its versatile application.

MAINTENANCE

To maintain the appearance and durability of your wood sign, follow these simple maintenance guidelines:

- **Cleaning:** Gently wipe the surface with a soft, dry, or slightly damp cloth to remove dust. Avoid using abrasive cleaners, harsh chemicals, or excessive moisture, as these can damage the wood finish.
- **Environment:** This product is intended for indoor use only. Avoid exposure to direct sunlight for prolonged periods, extreme temperatures, or high humidity, which can cause warping, fading, or damage to the material.
- **Handling:** Handle the sign with care to prevent scratches or chips to the wooden surface.



Image: A detailed view of the 'Love You Bye' wooden letters, highlighting the smooth, polished surface and the quality of the wood material.

TROUBLESHOOTING

If you encounter any issues with your YoTelim Love You Bye Wood Sign, refer to the following common concerns and solutions:

- **Sign Not Sticking:**
 - Ensure the wall surface was thoroughly cleaned and dry before application.
 - Verify that sufficient pressure was applied to each piece during installation.
 - The adhesive may not perform optimally on textured or uneven surfaces. Consider a smoother area or alternative mounting methods if necessary.
- **Damage to Sign:**
 - If the sign is chipped or scratched, minor touch-ups with a suitable wood paint marker may be possible.
 - Avoid dropping or striking the sign against hard surfaces.

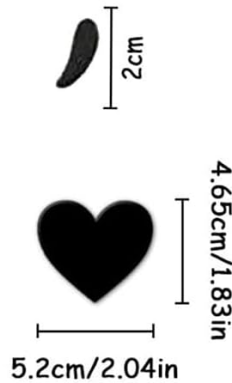
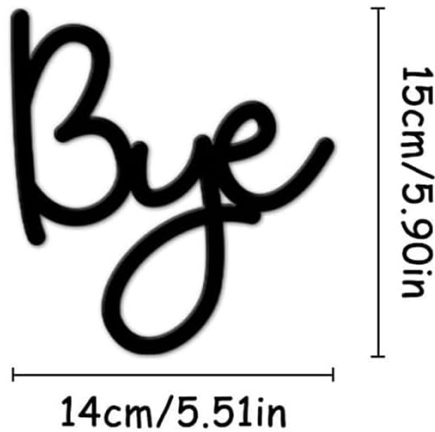
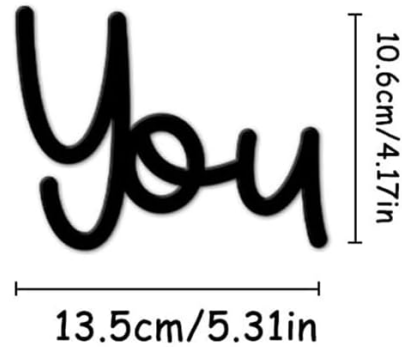
SPECIFICATIONS

Detailed specifications for the YoTelim Love You Bye Wood Sign:

Feature	Detail
Brand	YoTelim
Model Number	JJ00486
Material	High-quality Wood (5mm thickness)

Color	Style 3 (Black)
Mounting Type	Wall Mount (with adhesive backing)
Included Components	Adhesive backing
Recommended Use	Indoor home decor
Approximate Dimensions (Individual Letters)	"Love": 17.9cm (7.04in) x 9.9cm (3.89in) "You": 13.5cm (5.31in) x 10.6cm (4.17in) "Bye": 14cm (5.51in) x 15cm (5.90in) Heart: 5.2cm (2.04in) x 4.65cm (1.83in)

PRODUCT SIZE



Double Side Sticker

Image: A detailed diagram illustrating the length and height measurements for each component of the 'Love You Bye' sign, including the 'Love', 'You', 'Bye' words, and the heart symbol, along with the double-sided stickers.

PRODUCT DETAILS



1

Grain wood grain surface

2

5 mm thickness



3

Smooth without burrs

Image: Close-up views highlighting product details such as the grain wood surface, 5mm thickness, and smooth finish without burrs.

WARRANTY AND SUPPORT

Information regarding product warranty and customer support for the YoTelim Love You Bye Wood Sign is not available in this manual. For specific warranty details or support inquiries, please refer to the product packaging or contact the retailer where the product was purchased.