

## Gaderth fowW9mPy8Xzs-MjnWqBX0A

# Gaderth Digital Night Vision Monocular User Manual

Model: fowW9mPy8Xzs-MjnWqBX0A

[Introduction](#)   [Safety Information](#)   [Package Contents](#)   [Product](#)  
[Overview](#)   [Setup](#)   [Operation](#)   [Maintenance](#)   [Troubleshooting](#)   [Specifications](#)   [Warranty & Support](#)

## 1. INTRODUCTION

---

Thank you for purchasing the Gaderth Digital Night Vision Monocular. This device is designed for clear observation in complete darkness or low-light conditions, allowing you to capture high-definition photos and videos. Please read this manual thoroughly before use to ensure proper operation and to maximize your viewing experience.

## 2. SAFETY INFORMATION

---

- Do not look directly into the sun or any bright light source through the device, as this may cause permanent eye damage.
- Keep the device away from water and moisture.
- Avoid dropping or subjecting the device to strong impacts.
- Do not attempt to disassemble or repair the device yourself. Contact customer support for assistance.
- Use only recommended batteries. Ensure correct polarity when inserting batteries.
- Store the device in a cool, dry place when not in use.

## 3. PACKAGE CONTENTS

---

Verify that all items are present in your package:

- Gaderth Digital Night Vision Monocular
- USB Cable

- Cleaning Cloth
- User Manual
- Strap (if included)
- *Note: TF card (memory card) is not included and must be purchased separately.*

## 4. PRODUCT OVERVIEW

---

Familiarize yourself with the components of your night vision monocular.

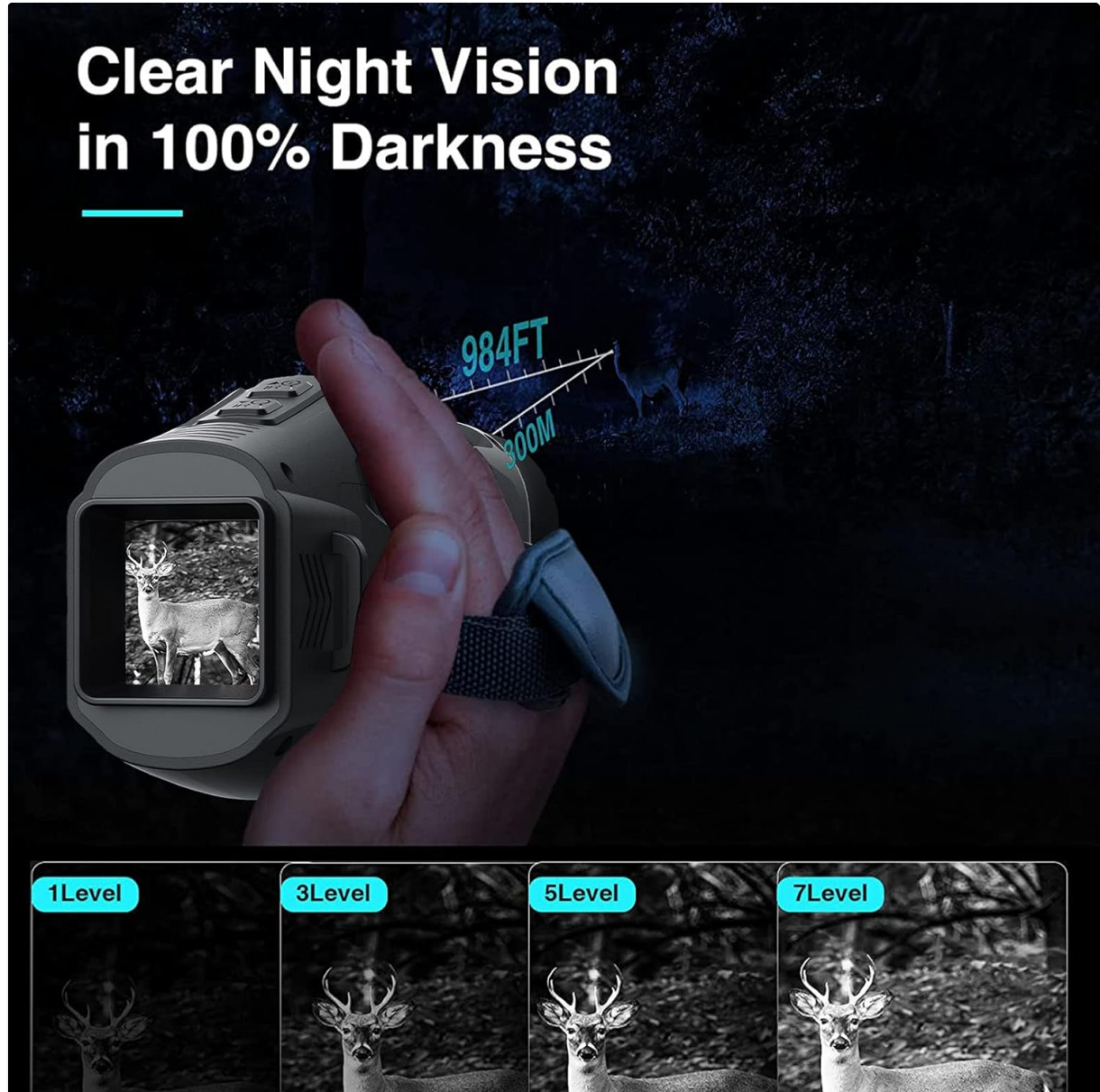


Image 4.1: Front view of the Gaderth Digital Night Vision Monocular, showing the objective lens and display screen.



Image 4.2: Dimensions of the Gaderth Digital Night Vision Monocular, illustrating its compact size (approx. 6.69 x 3.54 x 3.54 inches).



Image 4.3: The Gaderth Digital Night Vision Monocular shown mounted on a helmet, demonstrating its compatibility as helmet goggles.

### Component Identification:

1. **Objective Lens:** Collects light from the scene.

2. **IR Illuminator:** Emits infrared light for night vision.
3. **Focus Wheel:** Adjusts focus for clear images.
4. **Power Button:** Turns the device on/off.
5. **Menu Button:** Accesses device settings.
6. **Mode Button:** Switches between photo, video, and playback modes.
7. **Zoom Buttons (+/-):** Adjusts digital zoom level.
8. **IR Level Adjustment Buttons:** Increases or decreases IR intensity.
9. **Display Screen:** Shows live view, captured images, and menu.
10. **Battery Compartment:** Holds batteries.
11. **TF Card Slot:** For inserting a memory card.
12. **USB Port:** For data transfer and charging (if applicable).

## 5. SETUP

---

### 5.1. Battery Installation

1. Locate the battery compartment cover, usually on the underside or side of the device.
2. Open the cover.
3. Insert the required batteries (e.g., AA batteries, not included) according to the polarity markings (+/-).
4. Close the battery compartment cover securely.

### 5.2. Inserting a Memory Card (TF Card)

A TF card (MicroSD card) is required to save photos and videos.

1. Locate the TF card slot, typically protected by a rubber flap.
2. Gently insert the TF card with the gold contacts facing down until it clicks into place.
3. To remove, push the card in slightly until it springs out.

### 5.3. Initial Power On

Press and hold the **Power Button** for a few seconds until the display screen illuminates.

## 6. OPERATING INSTRUCTIONS

---

### 6.1. Power On/Off

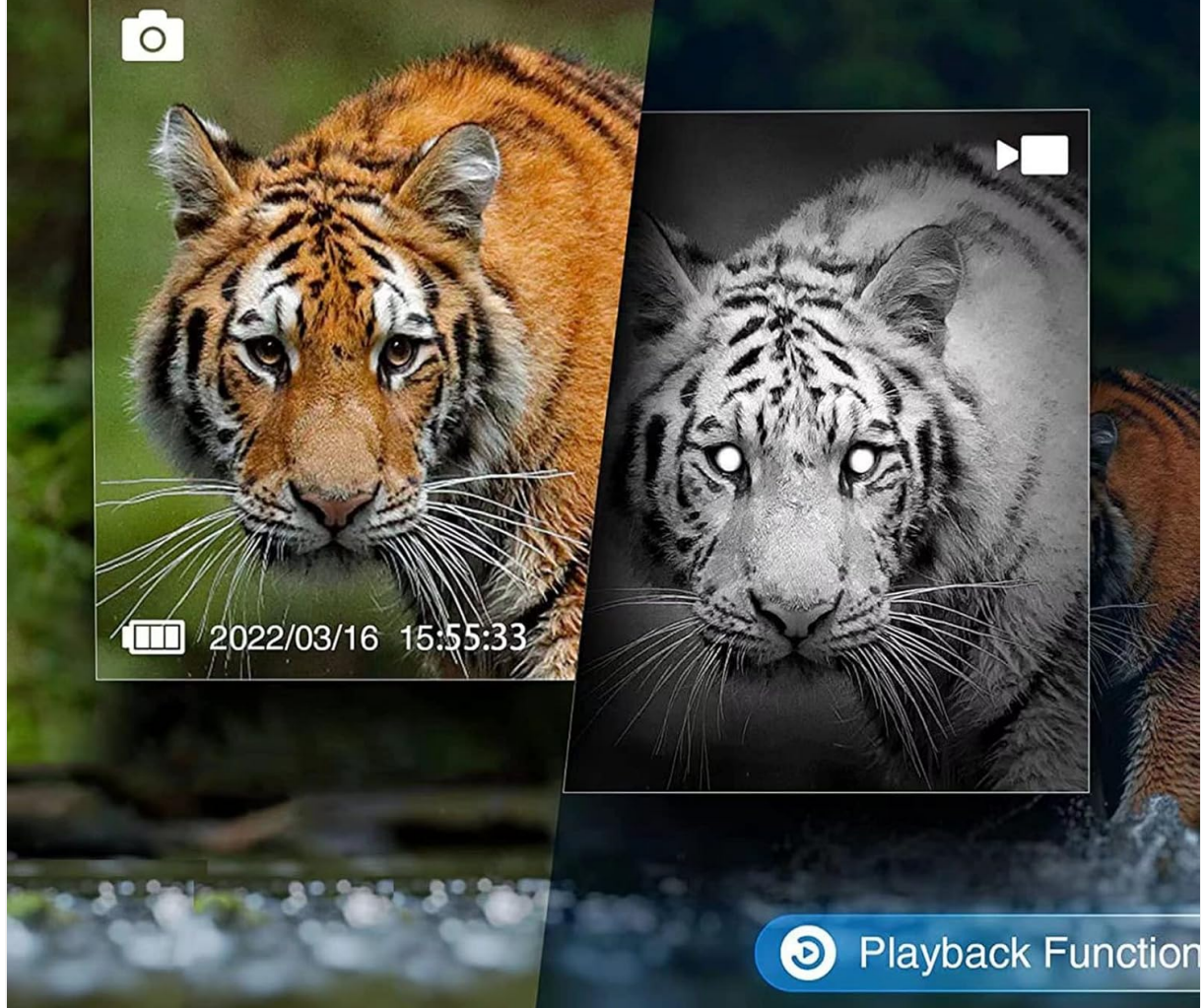
- **To Power On:** Press and hold the **Power Button**.
- **To Power Off:** Press and hold the **Power Button** again until the screen turns off.

### 6.2. Adjusting Focus

Rotate the **Focus Wheel** (usually located near the objective lens) until the image on the display screen appears sharp and clear.

### 6.3. Day and Night Use

# BOTH DAY & NIGHT USE CAPTURE CLEAR VIDEO & PHOTOS



*Image 6.1: Comparison of day vision (color) and night vision (monochrome) capabilities.*

- **Daytime Use:** The device operates in full color. The IR illuminator should be off.
- **Nighttime Use:** The device automatically switches to monochrome (black and white) for enhanced low-light performance. Activate the IR illuminator for complete darkness.

## 6.4. Adjusting IR Level



*Image 6.2: Demonstrates the effect of 7-level IR adjustment on night vision clarity, showing progressive visibility from 1 to 7 levels.*

The device features a 7-level adjustable IR illuminator. Use the **IR Level Adjustment Buttons** (often marked with IR+ and IR-) to increase or decrease the infrared intensity. Higher IR levels provide greater viewing distance in complete darkness but consume more battery power.

## **6.5. Digital Zoom**

# PROFESSIONAL OPTICAL MAGNIFICATION SYSTEM



Image 6.3: Illustrates the digital zoom capability, enhancing detail on distant objects. The device offers up to 5X digital zoom.

Press the **Zoom +** or **Zoom -** buttons to adjust the digital magnification. The device offers up to 5X digital zoom.

## 6.6. Capturing Photos and Videos

- **Switching Modes:** Press the **Mode Button** to cycle between Photo Mode, Video Mode, and Playback Mode.
- **Taking a Photo:** In Photo Mode, press the **Shutter Button** (often integrated with the OK/Capture button) once to capture an image.
- **Recording a Video:** In Video Mode, press the **Record Button** (often integrated with the OK/Capture button) once to start recording. Press it again to stop recording.

## 6.7. Menu Navigation

Press the **Menu Button** to access settings such as resolution, date/time, language, and format TF card. Use the navigation buttons (often the zoom/IR buttons) to scroll through options and the OK/Capture button to select.

## 6.8. Playback

In Playback Mode, use the navigation buttons to browse through your captured photos and videos. Press the OK/Capture button to view a photo or play a video.

## 7. MAINTENANCE

---

### 7.1. Cleaning

- Use the provided cleaning cloth or a soft, lint-free cloth to gently wipe the lenses. Do not use abrasive materials or harsh chemicals.
- For the device body, wipe with a soft, damp cloth.

### 7.2. Storage

- When not in use for extended periods, remove the batteries to prevent leakage.
- Store the device in its protective case (if provided) in a cool, dry environment, away from direct sunlight and extreme temperatures.

## 8. TROUBLESHOOTING

---

Problem	Possible Cause	Solution
Device does not power on.	Low or dead batteries; incorrect battery installation.	Replace batteries; ensure correct polarity.
Image is blurry.	Focus not adjusted; dirty lens.	Rotate the focus wheel; clean the objective lens.
Cannot see in complete darkness.	IR illuminator is off or set to low level.	Activate IR illuminator; increase IR level.
Cannot save photos/videos.	No TF card inserted; TF card full or corrupted.	Insert a TF card; delete files or format the card (backup data first).
Short battery life.	High IR level usage; old batteries.	Reduce IR level when not needed; use fresh, high-quality batteries.

## 9. SPECIFICATIONS

---

Feature	Detail
Model Name	fowW9mPy8Xzs-MjnWqBX0A
Brand	Gaderth
Digital Zoom	5X
Objective Aperture	25mm
IR Illuminator	3W Infrared LED, 850nm
IR Levels	7-level adjustable
Viewing Distance (Full Dark)	Up to 984 feet (300 meters)

Feature	Detail
Video Resolution	1080P HD
Display Screen	1.5-inch TFT
Power Source	Batteries (not included)
Storage	TF Card (not included)
Weight	0.75 Pounds (approx. 340 grams)
Dimensions (LxWxH)	6.69 x 3.54 x 3.54 inches
Material	Plastic

## 10. WARRANTY AND SUPPORT

---

The product information indicates no specific warranty is provided. For any operational issues, troubleshooting assistance beyond this manual, or inquiries, please contact the seller or manufacturer directly through your purchase platform. Keep your purchase receipt for reference.

Manufacturer: Gaderth