

DSX-74

Generic 4-in-1 Leg Massager (Model DSX-74) Instruction Manual

Your comprehensive guide to setup, operation, and maintenance.

1. INTRODUCTION AND OVERVIEW

The Generic 4-in-1 Leg Massager (Model DSX-74) is a versatile, handheld device designed for full-body application, offering high-frequency massage, hot compress physical therapy, and pulse modes. It features 19 levels of intensity adjustment for various needs, from daily care to deep fatigue relief. Its rechargeable, wireless design ensures portability and convenience, with a battery life of 3-4 hours per charge and an automatic 60-minute shutdown function. The device is ergonomically designed for comfortable use across different body parts and is deeply waterproof for easy cleaning.

Ours





Wireless Use

Wireless handheld and battery-powered, easy to use.



19 Levels of Adjustment

Three modes, all with 19 levels of intensity adjustment, one-touch easy switching.



Upgraded Warming Mode

Shortened preheating time, fast heating, 19 levels of heat to choose from.



Battery Level Display

During use, the battery grid will gradually reduce according to the power, and the indicator will flash to prompt charging.

Others



Wired Use

Wireless handheld and battery-powered, easy to use.

9 Levels of Adjustment

Wireless handheld and battery-powered, easy to use.

Slow to Warm Up

Wireless handheld and battery-powered, easy to use.

Need to connect power

Wireless handheld and battery-powered, easy to use.

Figure 1: Overview of the 4-in-1 Leg Massager's key features, including wireless use, 19 levels of adjustment, upgraded warming mode, and battery level display, highlighting its advantages.

4 in 1 Leg Massager for Lymphatic Drainage

1. Massage

2. Scraping

3. Heating

4. Vibration



Figure 2: Visual representation of the massager's four core functions: Massage, Scraping, Heating, and Vibration, indicating its multi-purpose design.

2. SAFETY INFORMATION

- This product is not intended to diagnose, treat, cure, or prevent any disease or health condition. Consult a healthcare professional for any medical concerns.
- Do not use on broken or irritated skin.
- Keep out of reach of children.
- Avoid using while charging.
- If you experience any discomfort, discontinue use immediately.

3. SETUP

3.1 Charging the Device

1. Connect the provided USB charging cable to the charging port on the device.
2. Plug the other end of the USB cable into a compatible 5V/1A power adapter (not included) or a USB port.
3. The device's display will indicate charging status. Ensure the device is fully charged before first use.
4. A full charge provides approximately 3-4 hours of battery life.

3.2 Preparing for Use

1. Ensure the device is clean and fully charged.
2. For optimal gliding and skin protection, apply a small amount of essential oil or lotion to the skin area you intend to massage.
3. Familiarize yourself with the control buttons on the device for power, mode selection, and intensity adjustment.

4. OPERATING INSTRUCTIONS

4.1 Power On/Off

- Press and hold the power button (usually indicated by an 'On/Off' or power symbol) for a few seconds to turn the device on.
- To turn off, press and hold the power button again until the device powers down.
- The device features an automatic shutdown function after 60 minutes of continuous use.

4.2 Mode Selection

The massager offers three distinct modes, which can be used independently or simultaneously:

- **High-Frequency Massage Mode:** Provides deep tissue massage.
- **Hot Compress Mode:** Delivers soothing warmth.
- **Pulse Mode:** Enhances relaxation with advanced technology.

Three different massage output modes

Three modes, with 19 levels of intensity adjustment, one-touch easy switching



Figure 3: The massager's three output modes, each with 1-19 intensity levels, can be used individually or combined. Massage in a clockwise circular motion when using.

4.3 Intensity Adjustment (19 Levels)

Each mode offers 19 levels of intensity, allowing for personalized massage experiences. Adjust the intensity using the dedicated buttons (often '+' and '-' or mode cycle buttons) on the device.

- **Grades 1-5:** Low-temperature hot compress, suitable for daily care and gentle warming.
- **Grades 6-10:** Moderate temperature physiotherapy to promote circulation.
- **Grades 11-15:** High-temperature massage for quick recovery and fatigue relief.
- **Grades 16-19:** Deep penetration to target muscle pain points and relieve deep fatigue.

Hot Compress Care, Deep Maintenance

Multiple gears can be adjusted to meet your desired temperature



1-7 Levels

Low temperature hot compress, daily care



8-14 Levels

Medium temperature therapy, active cells



15-19 Levels

Deep penetration, fatigue relief



Note: For first time use, please start from the lowest setting to get used to the messenger.

Figure 4: Detailed breakdown of hot compress intensity levels and their corresponding therapeutic effects. Always start from the lowest setting for first-time use.

Enjoy a spa-level leg massage

This product adopts the latest bioelectricity technology, which can relieve your fatigue in a day and rejuvenate you from the inside out.

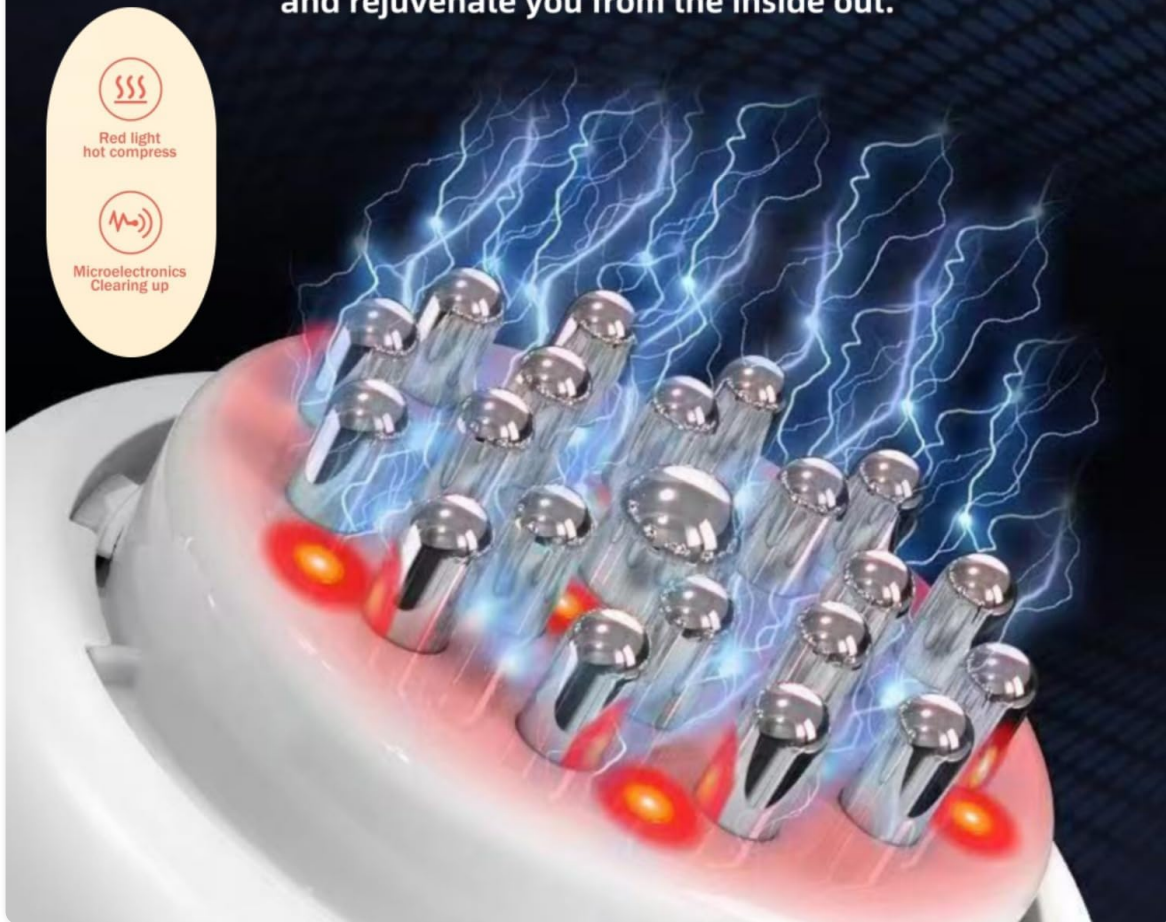


Figure 5: The massager utilizes bioelectricity technology, red light hot compress, and microelectronics for a spa-level massage experience, relieving fatigue and rejuvenating the body.

4.4 Application Areas

The ergonomic design allows for flexible application across various body parts:

- **Legs:** Ideal for lymphatic drainage and edema relief.
- **Shoulders & Neck:** Helps release pressure and tension.
- **Arms:** For muscle relaxation and circulation.
- **Back:** Targets muscle pain points and promotes overall relaxation.
- **Abdomen:** Can promote gastrointestinal peristalsis and support a healthy body shape.

Multi-part Massage, Whole Body Use

Release the stress of your whole body and feel relaxed everyday.



Figure 6: The massager's versatility allows for use on multiple body parts, including hands, neck, back, and legs, to release stress and promote daily relaxation.

Penetrates Deeply and Drives Away Fatigue

You can get precise massage to effectively relieve fatigue.

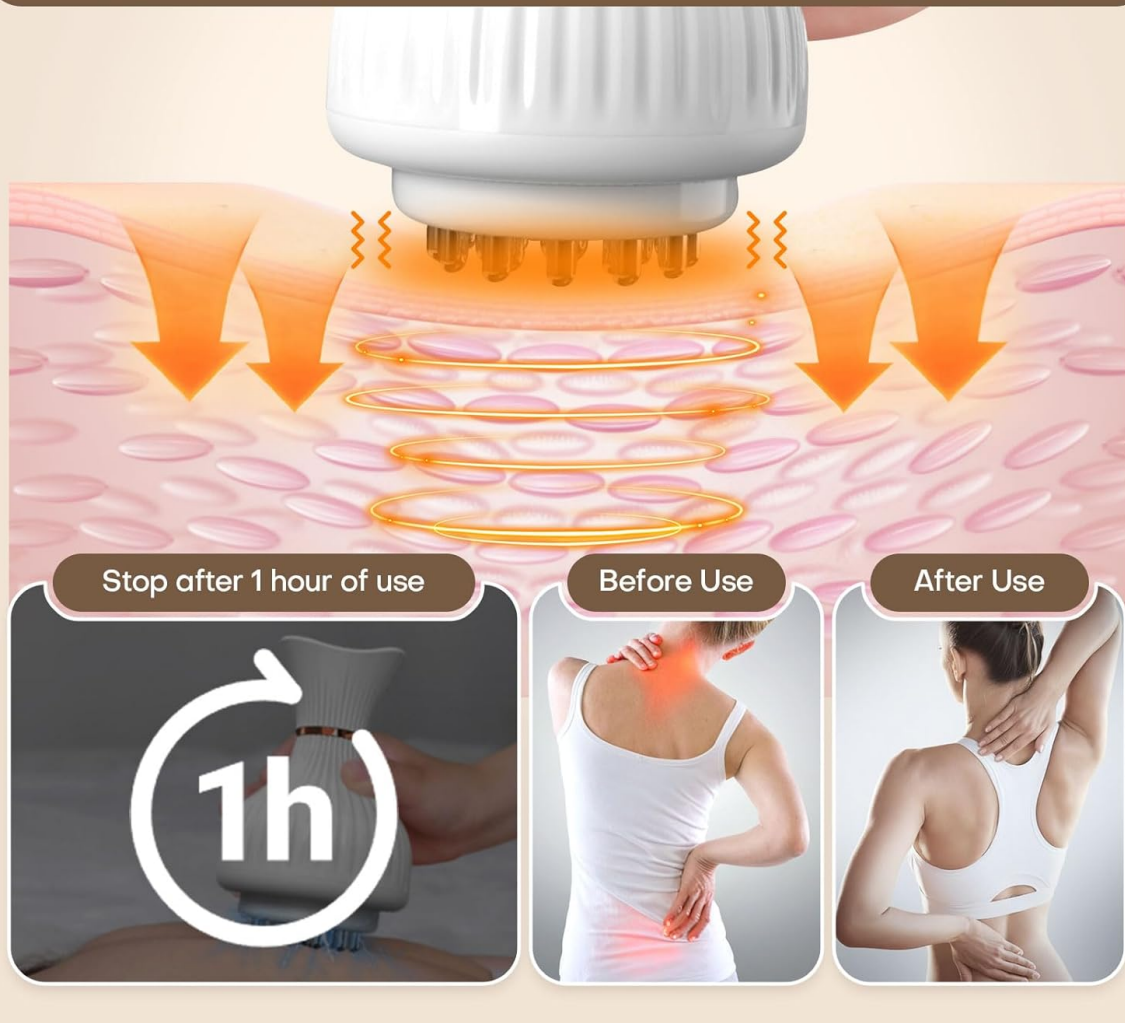


Figure 7: The massager penetrates deeply to relieve fatigue, with a recommended 1-hour use limit. Before and after images illustrate potential relief from muscle discomfort.

5. MAINTENANCE

5.1 Cleaning

The 4-in-1 Leg Massager features a deep waterproof design and a washable brush head for convenient and hygienic cleaning.

- After each use, wipe the massage head with a soft, damp cloth.
- For thorough cleaning, the brush head can be rinsed under running water. Ensure the device is powered off and the charging port is securely covered before cleaning.
- Do not use abrasive cleaners or immerse the entire device in water.

Waterproof and Washable Brush Head

Waterproof brush head, quick cleaning, convenient and hygienic.



Figure 8: The massager features a waterproof and washable brush head, allowing for quick, convenient, and hygienic cleaning after use.

5.2 Storage

- Store the device in a cool, dry place away from direct sunlight and extreme temperatures.
- Keep the device away from sharp objects to prevent damage.

6. TROUBLESHOOTING

If you encounter any issues with your 4-in-1 Leg Massager, please refer to the following common solutions:

- **Device not turning on:** Ensure the device is fully charged. If the issue persists, try using a different charging cable or adapter.
- **Weak vibration/heating:** Check the battery level and recharge if necessary. Adjust the intensity level to a higher setting.
- **Device stops unexpectedly:** The device has an automatic 60-minute shutdown. If it stops before this time, ensure it is fully charged.

- **Skin irritation:** Discontinue use immediately. Ensure sufficient essential oil or lotion is applied to the skin for smooth gliding.

For further assistance, please contact customer support.

7. SPECIFICATIONS

Feature	Detail
Name	4-in-1 Leg Massager
Model Number	DSX-74
Brand	Generic
Color	White
Material	ABS + Electronic Component
Product Dimensions	5.8 x 4.1 x 7.2 inches
Item Weight	1.28 Pounds (580g)
Input Voltage	5V
Charging Current	5V/1A
Power Source	Battery Powered
Suitable Parts	Whole Body
Features	19-Level Intensity, Heating, Vibration, Pulse Modes, Deep Waterproof, Rechargeable

8. WARRANTY AND SUPPORT

For warranty information or technical support, please refer to the product packaging or contact the manufacturer directly. Keep your purchase receipt as proof of purchase.